



Suite U1 - Montgomery Square | Visalia, CA

Property For Lease

1005 N Demaree Street  
Visalia, California 93291  
O | 559.754.3020  
F | 559.429.4016  
[www.mdgre.com](http://www.mdgre.com)

**GRAHAM** | & ASSOCIATES

Matt Graham  
Lic# 01804235  
[www.mdgre.com](http://www.mdgre.com)

to learn more, visit: [www.mdgre.com](http://www.mdgre.com)

## PROPERTY DETAILS

<b>Address</b>	208 W Main Street - Upstairs - Suite U1   Visalia, CA
<b>Square Feet Available</b>	1,716 +/- Sq. Ft.
<b>Zoning</b>	CDT
<b>Lease Rate</b>	\$2.00 Per Sq. Ft.
<b>Lease Type</b>	FSG



### Additional Comments:

Recently remodeled contemporary office space available in desirable downtown Visalia. This suite is on the upper level floor in the Montgomery Square. Large open bullpen/reception area with three private offices, electrical room and restrooms are common. Current tenants in the building include restaurants, professional offices, salons and businesses. Great location and within walking distance to all downtown amenities. Please call for further details.



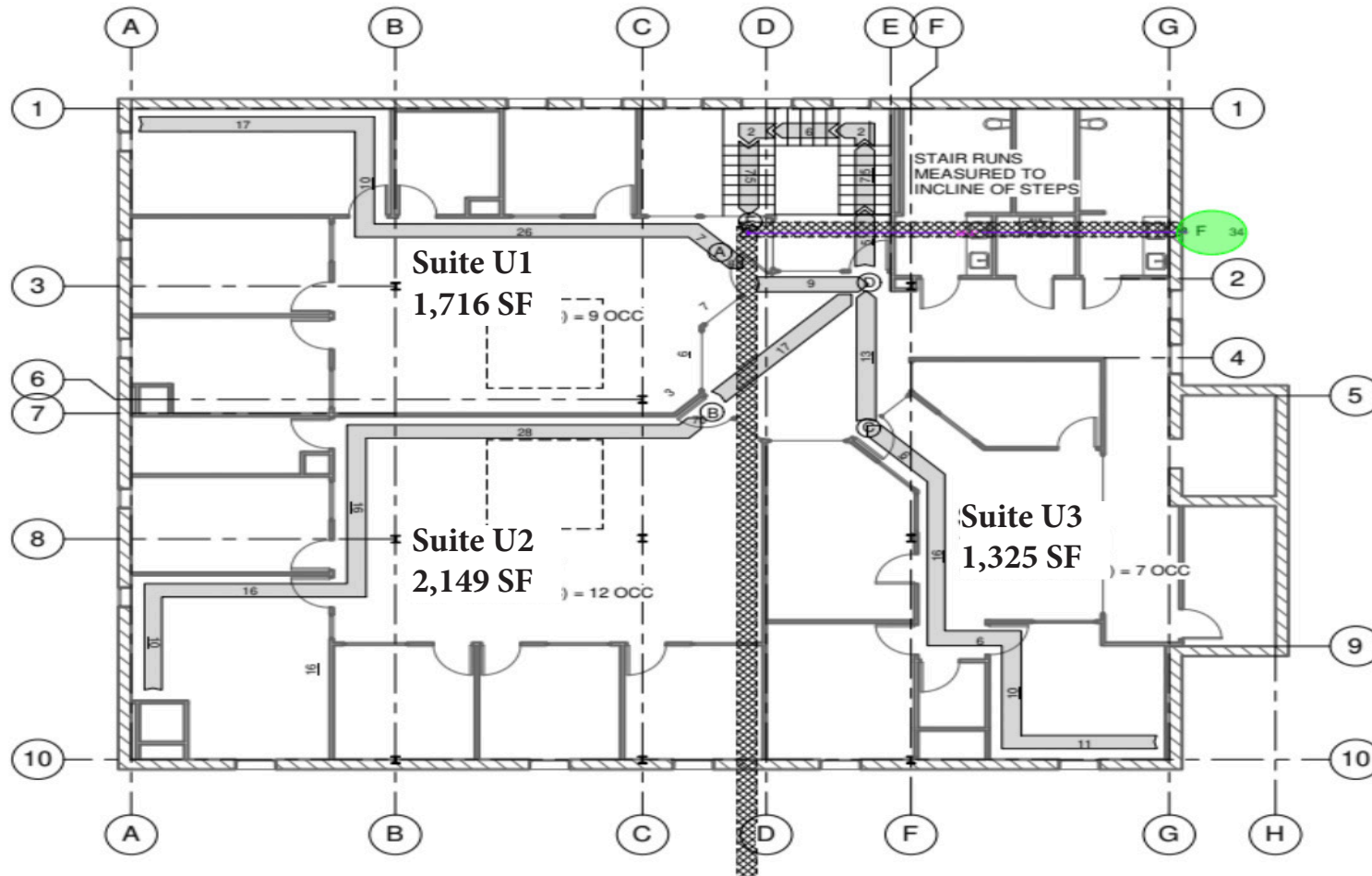
**Contact Broker:**  
Matt Graham  
Lic# 01804235

to learn more, visit: [www.mdgre.com](http://www.mdgre.com)

1005 N Demaree Street  
Visalia, California 93291  
O | 559.754.3020

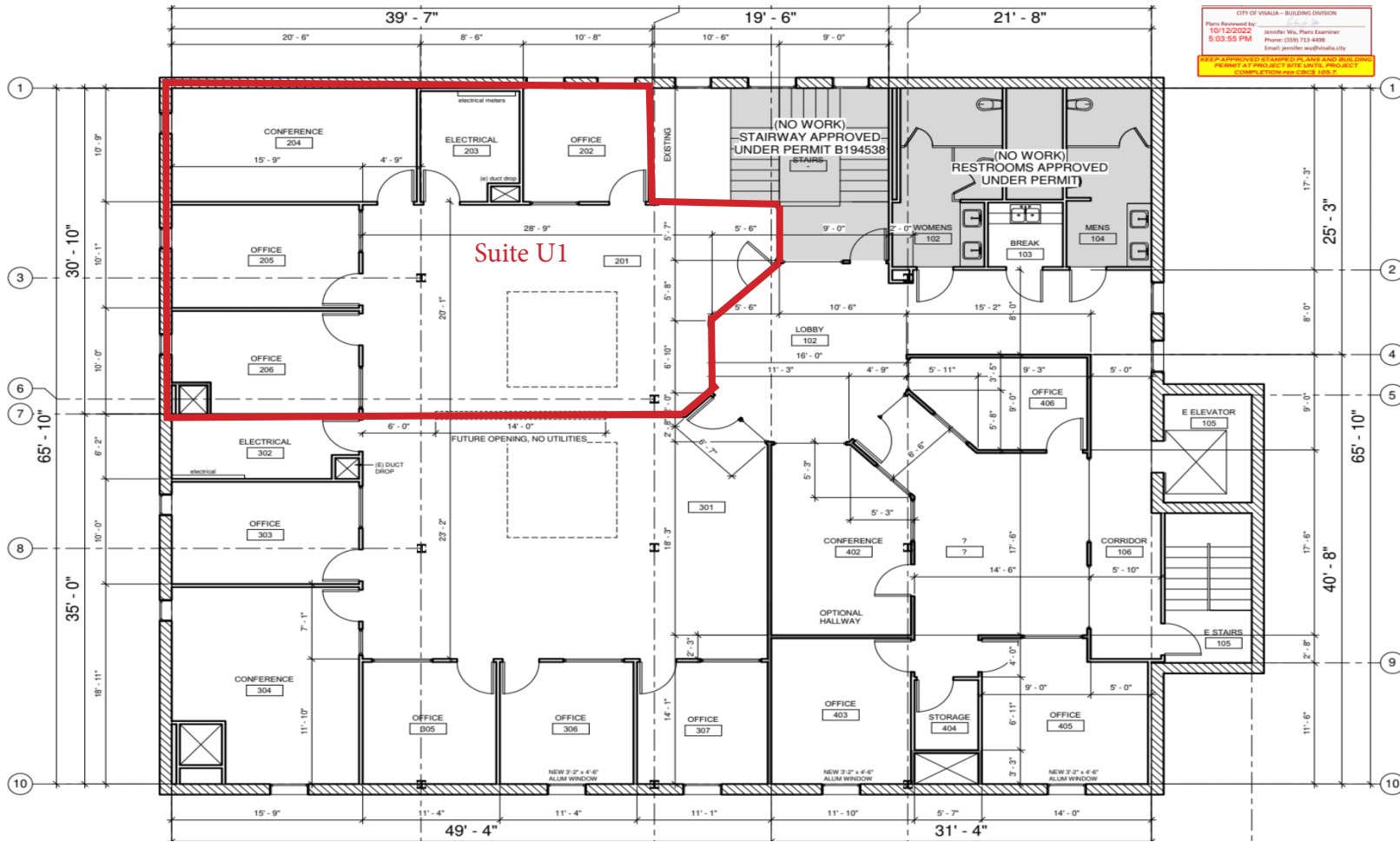
PLEASE NOTE: ALL INFORMATION AND REPRESENTATION MADE HEREIN, WHILE NOT GUARANTEED, HAVE BEEN SECURED FROM SOURCES WE BELIEVE TO BE RELIABLE, HOWEVER, THEY ARE NOT WARRANTED BY MATT GRAHAM & ASSOCIATES AND ARE SUBJECT TO CHANGE WITHOUT NOTICE.

### SITE PLAN



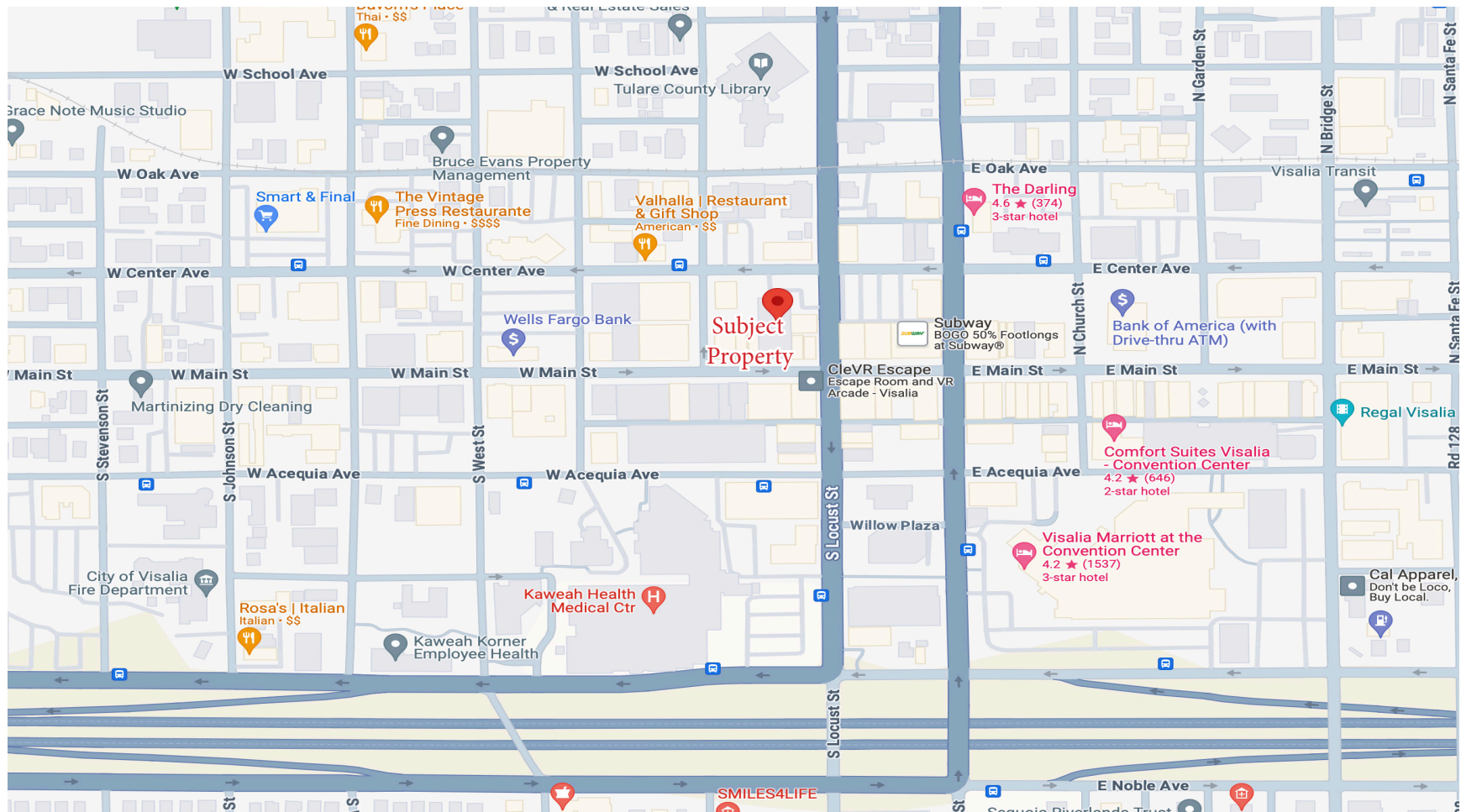
PLEASE NOTE: ALL INFORMATION AND REPRESENTATION MADE HEREIN, WHILE NOT GUARANTEED, HAVE BEEN SECURED FROM SOURCES WE BELIEVE TO BE RELIABLE, HOWEVER, THEY ARE NOT WARRANTED BY MATT GRAHAM & ASSOCIATES AND ARE SUBJECT TO CHANGE WITHOUT NOTICE.

# FLOOR PLAN



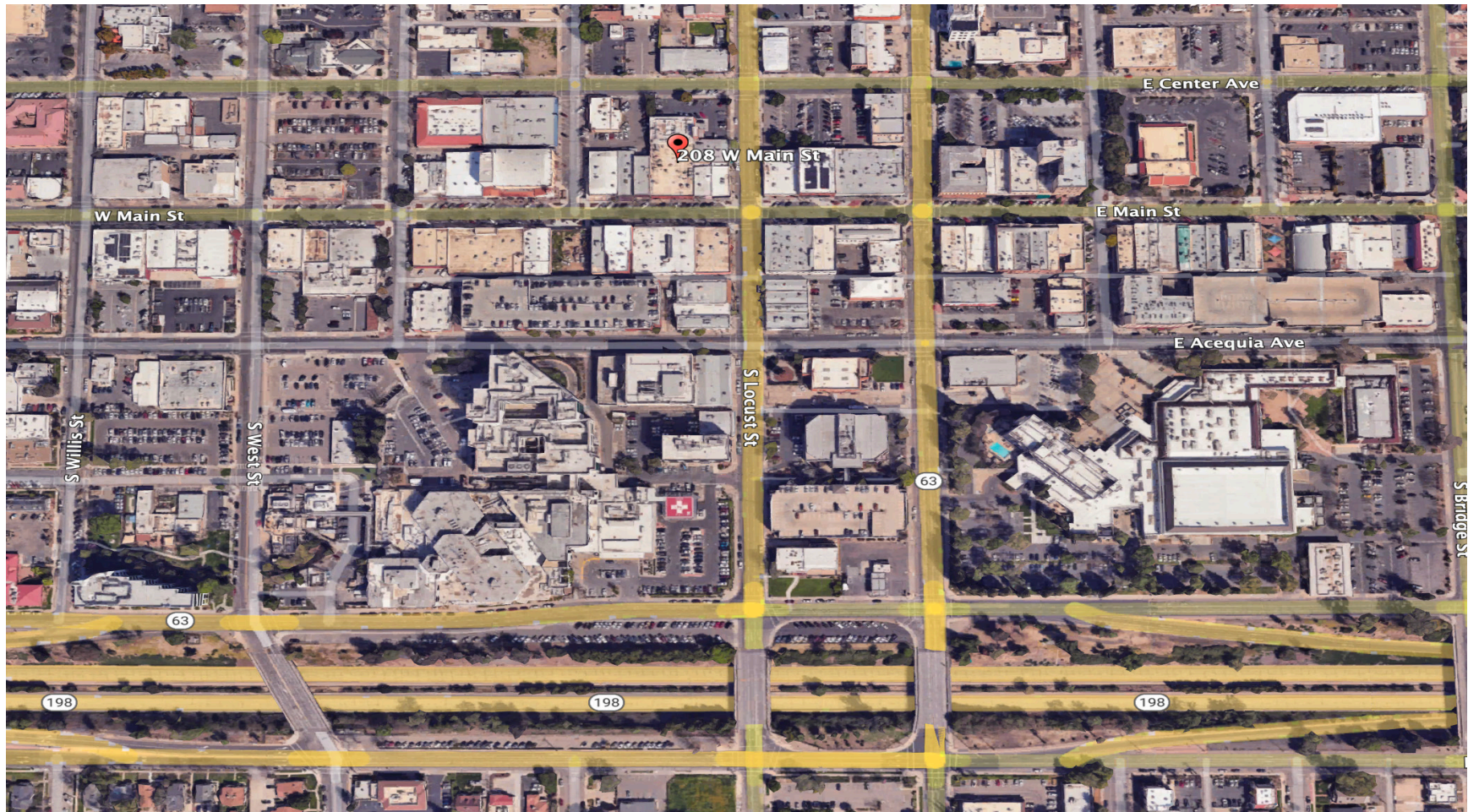
PLEASE NOTE: ALL INFORMATION AND REPRESENTATION MADE HEREIN, WHILE NOT GUARANTEED, HAVE BEEN SECURED FROM SOURCES WE BELIEVE TO BE RELIABLE, HOWEVER, THEY ARE NOT WARRANTED BY MATT GRAHAM & ASSOCIATES AND ARE SUBJECT TO CHANGE WITHOUT NOTICE.

# LOCATION MAP



PLEASE NOTE: ALL INFORMATION AND REPRESENTATION MADE HEREIN, WHILE NOT GUARANTEED, HAVE BEEN SECURED FROM SOURCES WE BELIEVE TO BE RELIABLE, HOWEVER, THEY ARE NOT WARRANTED BY MATT GRAHAM & ASSOCIATES AND ARE SUBJECT TO CHANGE WITHOUT NOTICE.

## PROPERTY LAYOUT



PLEASE NOTE: ALL INFORMATION AND REPRESENTATION MADE HEREIN, WHILE NOT GUARANTEED, HAVE BEEN SECURED FROM SOURCES WE BELIEVE TO BE RELIABLE, HOWEVER, THEY ARE NOT WARRANTED BY MATT GRAHAM & ASSOCIATES AND ARE SUBJECT TO CHANGE WITHOUT NOTICE.

## PROPERTY LAYOUT



PLEASE NOTE: ALL INFORMATION AND REPRESENTATION MADE HEREIN, WHILE NOT GUARANTEED, HAVE BEEN SECURED FROM SOURCES WE BELIEVE TO BE RELIABLE, HOWEVER, THEY ARE NOT WARRANTED BY MATT GRAHAM & ASSOCIATES AND ARE SUBJECT TO CHANGE WITHOUT NOTICE.

## PROPERTY LAYOUT



PLEASE NOTE: ALL INFORMATION AND REPRESENTATION MADE HEREIN, WHILE NOT GUARANTEED, HAVE BEEN SECURED FROM SOURCES WE BELIEVE TO BE RELIABLE, HOWEVER, THEY ARE NOT WARRANTED BY MATT GRAHAM & ASSOCIATES AND ARE SUBJECT TO CHANGE WITHOUT NOTICE.

## PROPERTY LAYOUT



PLEASE NOTE: ALL INFORMATION AND REPRESENTATION MADE HEREIN, WHILE NOT GUARANTEED, HAVE BEEN SECURED FROM SOURCES WE BELIEVE TO BE RELIABLE, HOWEVER, THEY ARE NOT WARRANTED BY MATT GRAHAM & ASSOCIATES AND ARE SUBJECT TO CHANGE WITHOUT NOTICE.