



**PREMIER PROPERTIES**  
By Barbara Alexander, LLC

## COMMERCIAL DIVISION

[www.move2wv.com](http://www.move2wv.com)

**304-594-1519**

### ***Attention Developers!***

#### ***Land For Sale***

***11.2 Acres +/-  
All Utilities Available  
at or near site***

***1.6 mile from  
West Virginia University,  
Shopping & Hospitals***

***Located near  
Evansdale Campus, Route  
705 (main thoroughfare  
for WVU, hospitals,  
Mylan & stadium)***

***Out of City Limits***



#### **MORGANTOWN MSA MULTIFAMILY SITE**

in TOP GROWTH MARKET (by CNBC, USA Today & WSJ)

Located off VanVoorhis Road, near WVU Hospitals & the Sun-crest area, this site is out of the city limits (no zoning or B&O tax) and 1.6 miles from WVU Hospitals at Route 705 (the main thoroughfare Morgantown and West Virginia University).

This area is a convenient location in a growth section of the Greater Morgantown Area and a HUB of Student apartments

The site contains about 11.2 acres +/- that is level to sloping & is a wooded site surrounded by residential, mobile homes & student housing properties. Suitable for a multifamily or townhouse project. All utilities are available at or near this site.

**Reduced to Sell**  
**\$325,000.00**

**HOWARDHANNA  
COMMERCIAL  
DIVISION - WV**

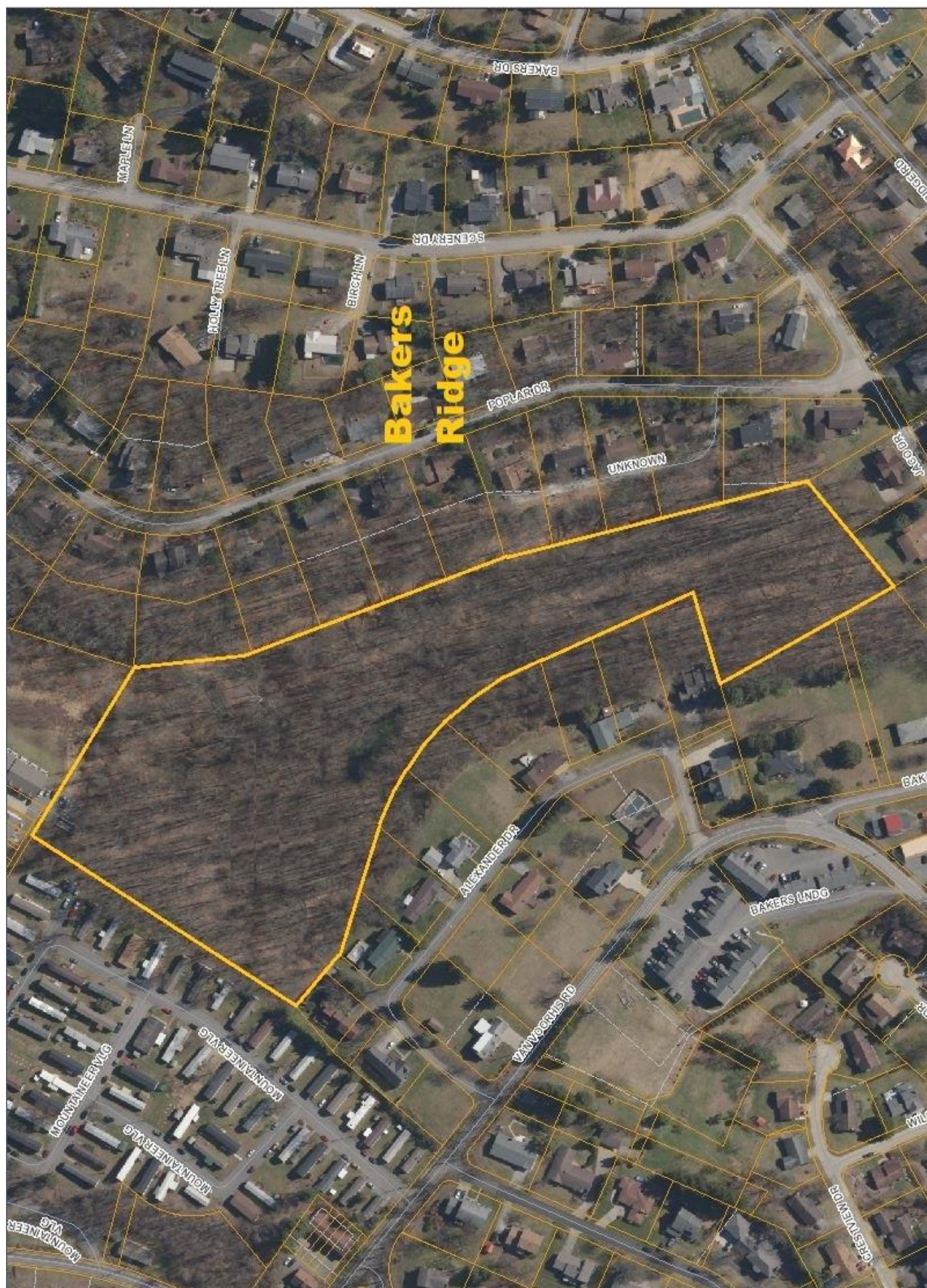
Premier Properties by Barbara  
Alexander, LLC  
2800 Cranberry Square  
Morgantown, West Virginia 26508

Mr. Kay Michael Alexander  
304-282-0077  
[kalexander@howardhanna.com](mailto:kalexander@howardhanna.com)

*North Central West Virginia's  
Leaders in Real Estate!*







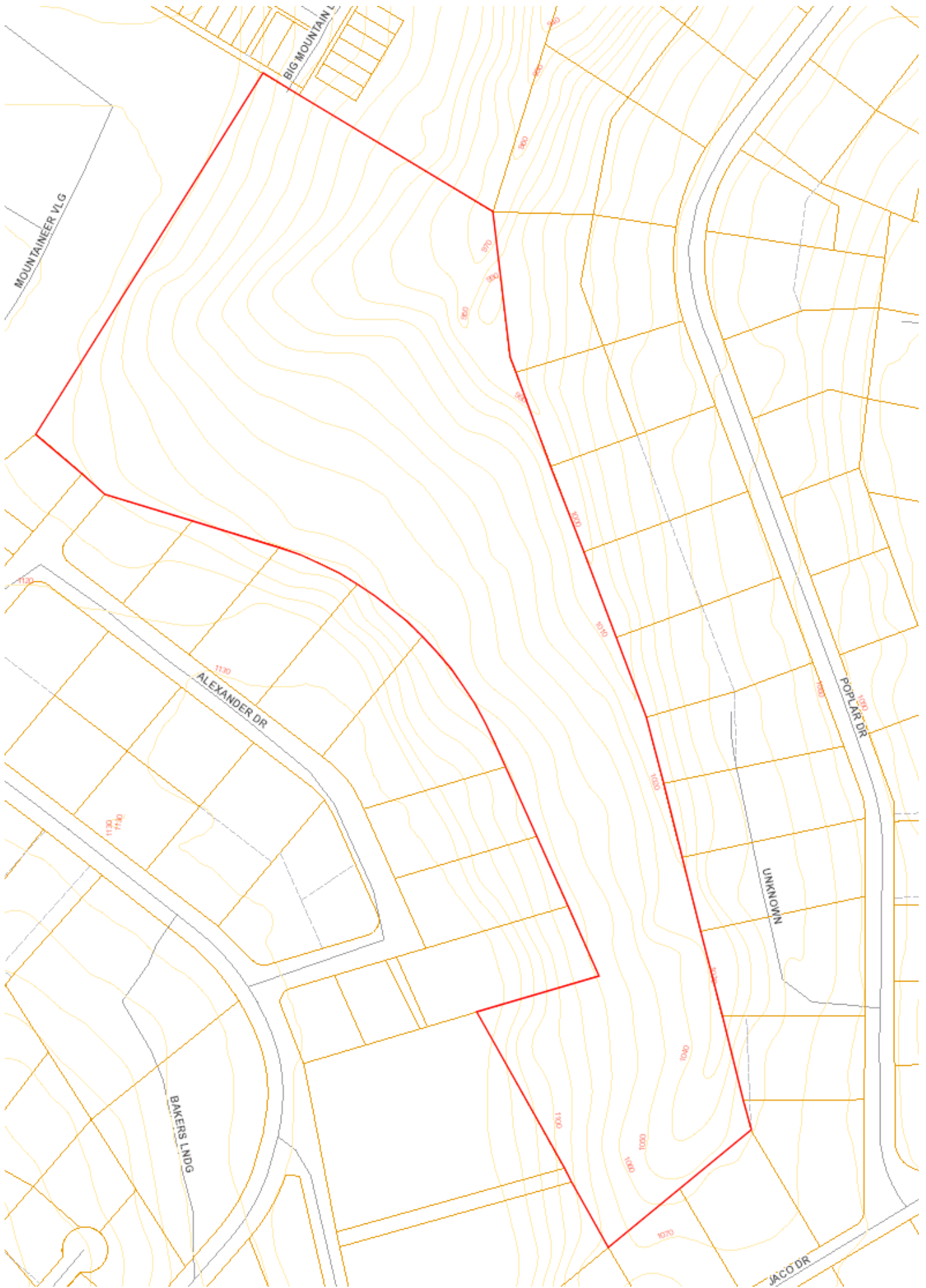


Microsoft  
Virtual Earth

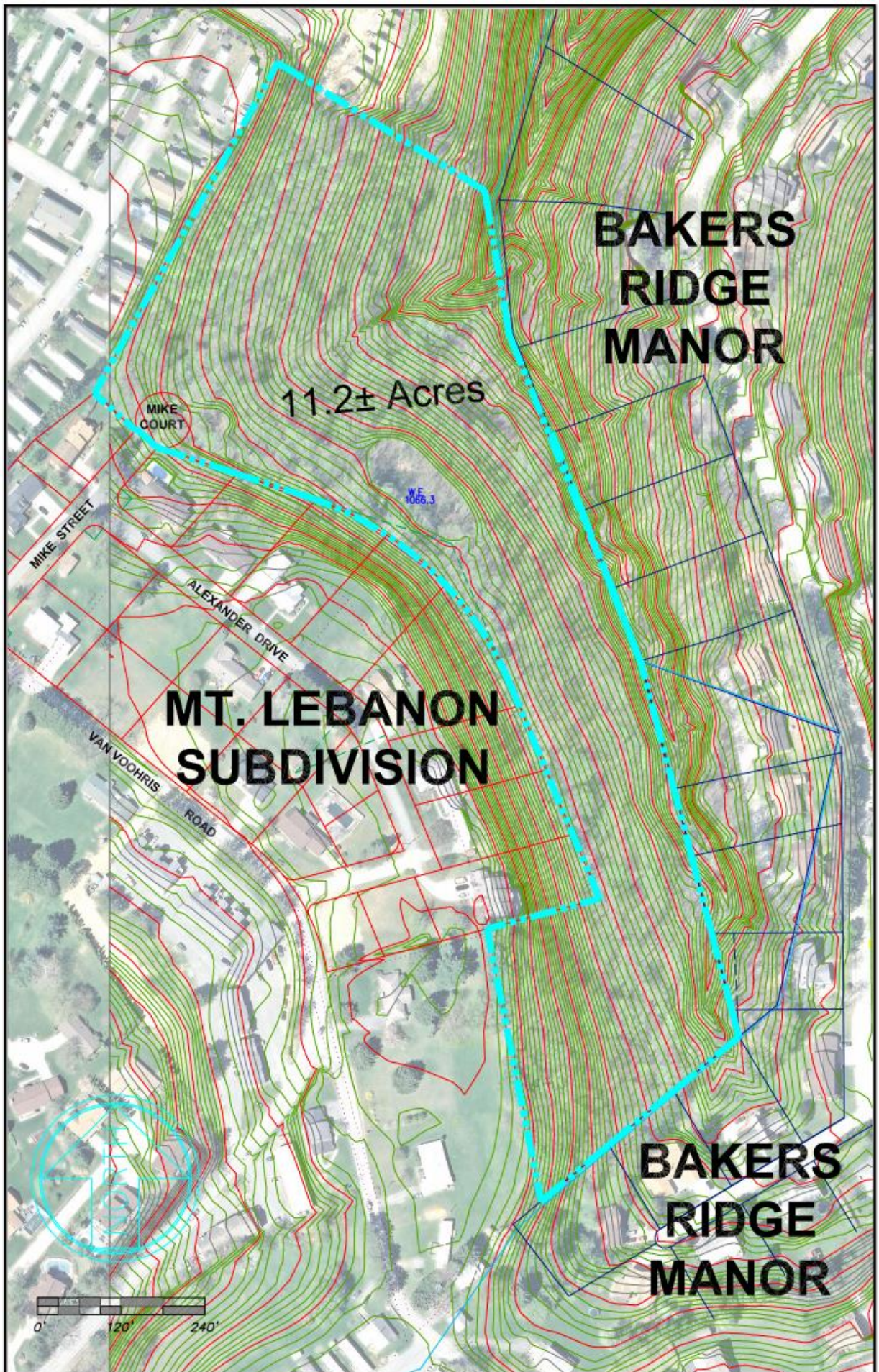


© GlobeXplorer © 2008 Navteq © 2008 Microsoft













**Siteplan topo depicting proposed single family lots**



