

4770 Duke Drive
Mason, OH 45040

FOR LEASE

OFFICE SPACE | 899 - 10,666 SF
\$11.75 - 14.25 SF/yr (NNN)

Ryan Van Dulman

rvandulman@bergman-group.com
513.377.0440

NALBergman



+1 513 769 1700



bergmancommercial.com



4695 Lake Forest Drive, Suite 100, Cincinnati, OH 45242

4770 Duke Drive

This beautiful 3 story office building is located conveniently close I-71 & Mason Montgomery Road and has multiple spaces available for lease. This building comes with a fully equipped Conferencing Facility that seats up to 50.

Highlights

- 0% Local Earnings Tax
- 24 Hour Controlled Access
- Property Manager On Site
- Skylights
- Atrium
- Conferencing Facility

Available Spaces

Suite 100	Available 8/1/26	1,982 SF
Suite 198	\$11.75 NNN	1,065 SF
Suite 205	\$13.00 NNN	899 SF
Suite 200	\$12.75 NNN	10,666 SF
Suite 207	\$14.25 NNN	3,520 SF



[Click for Suite 198 Video](#)



[Click for Suite 100 Video](#)



[Click for Suite 207 Video](#)



FOR LEASE | 4770 DUKE DRIVE



SUITE 198 - 1,065 SF

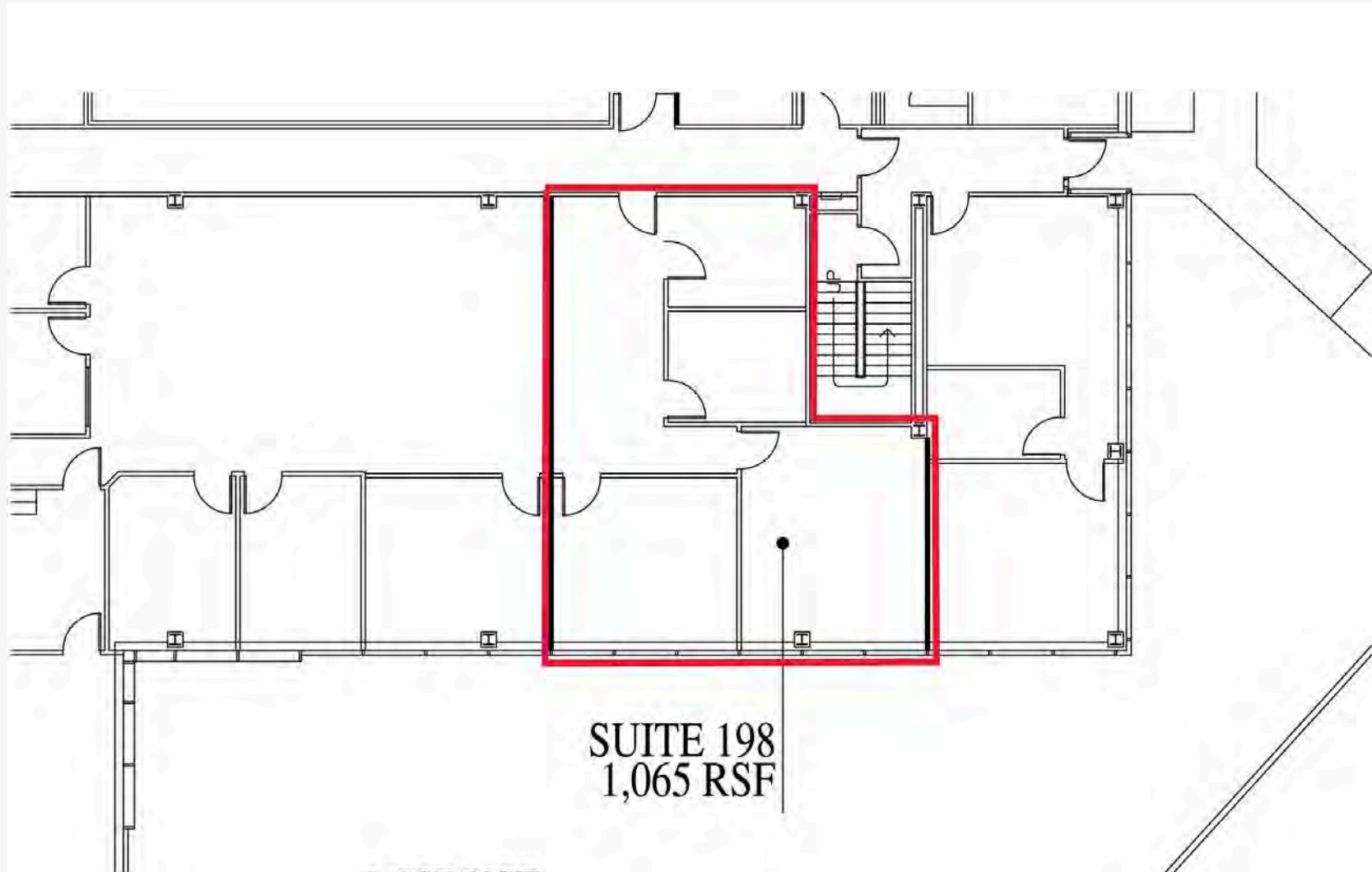
FOR LEASE | 4770 DUKE DRIVE



 4695 Lake Forest Drive, Suite 100, Cincinnati, OH 45242

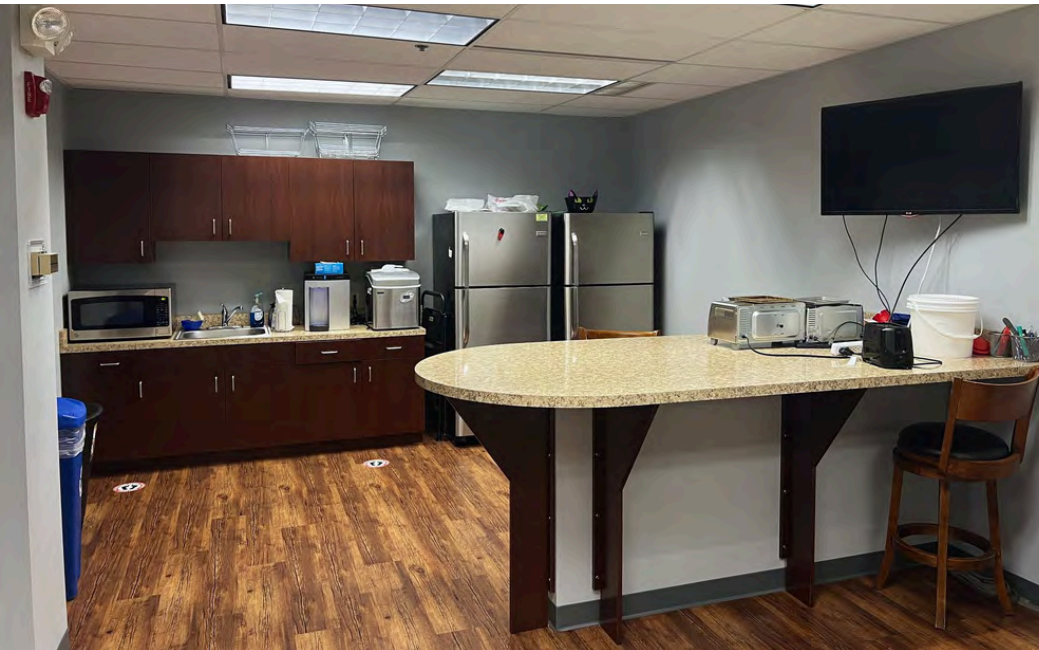
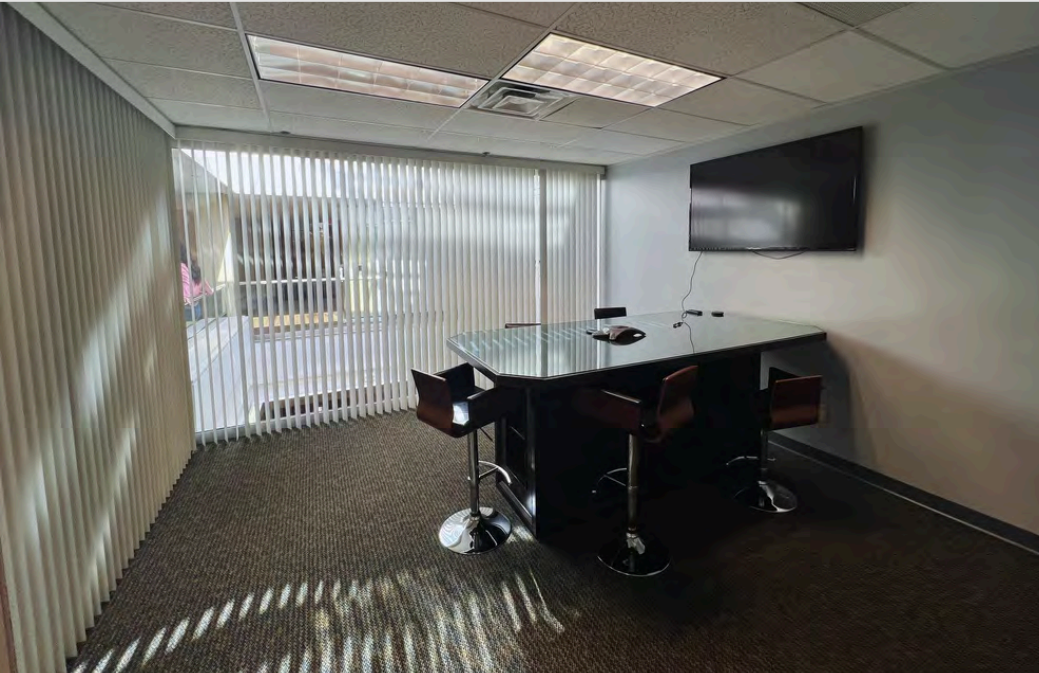
 +1 513 769 1700

 bergmancommercial.com



SUITE 200 - 10,666 SF

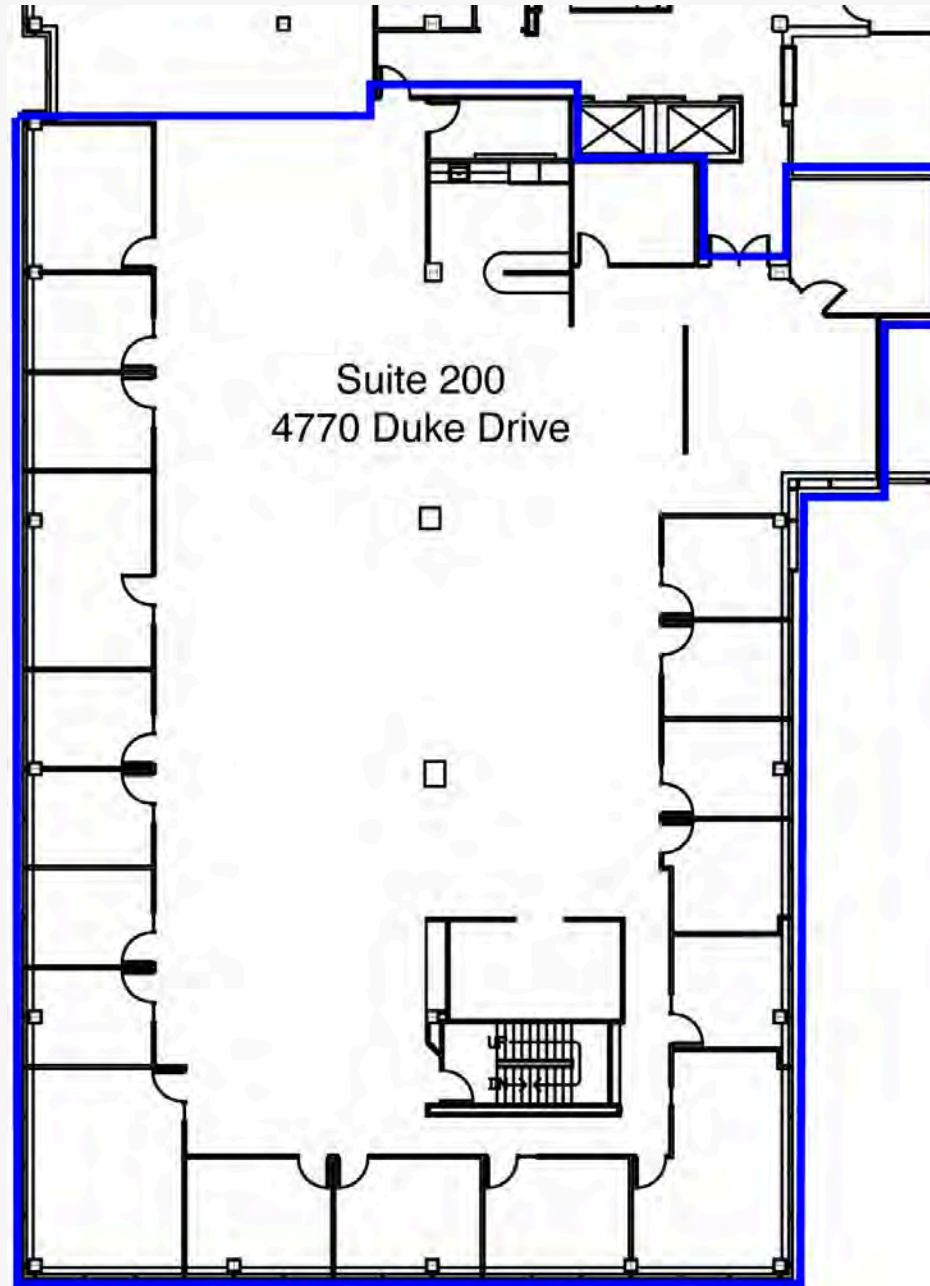
FOR LEASE | 4770 DUKE DRIVE



SUITE 200 - 10,666 SF

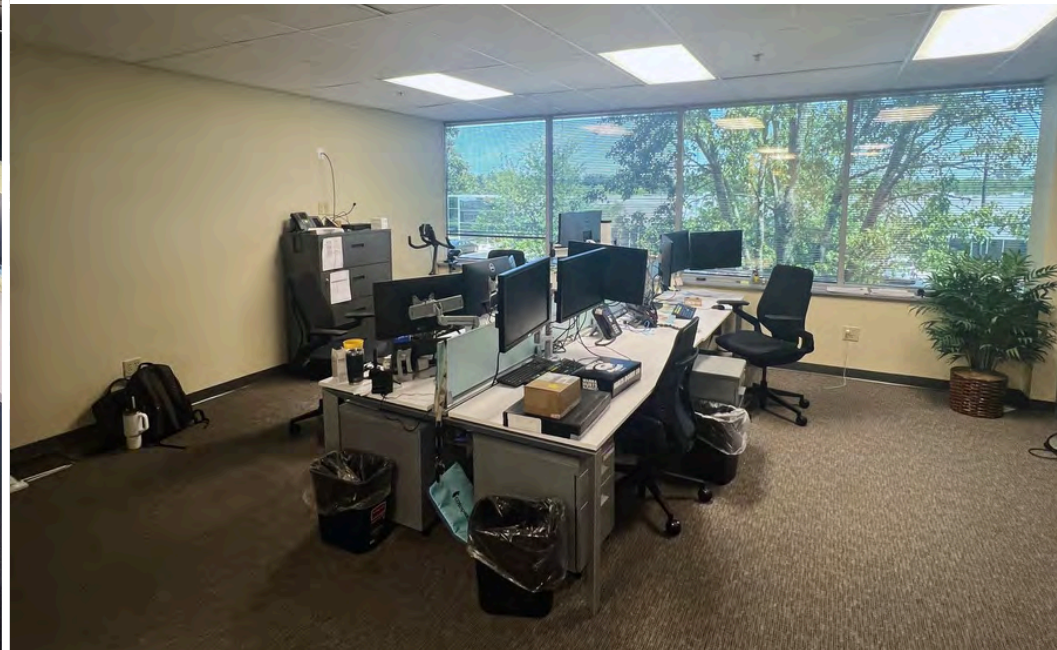
FOR LEASE | 4770 DUKE DRIVE

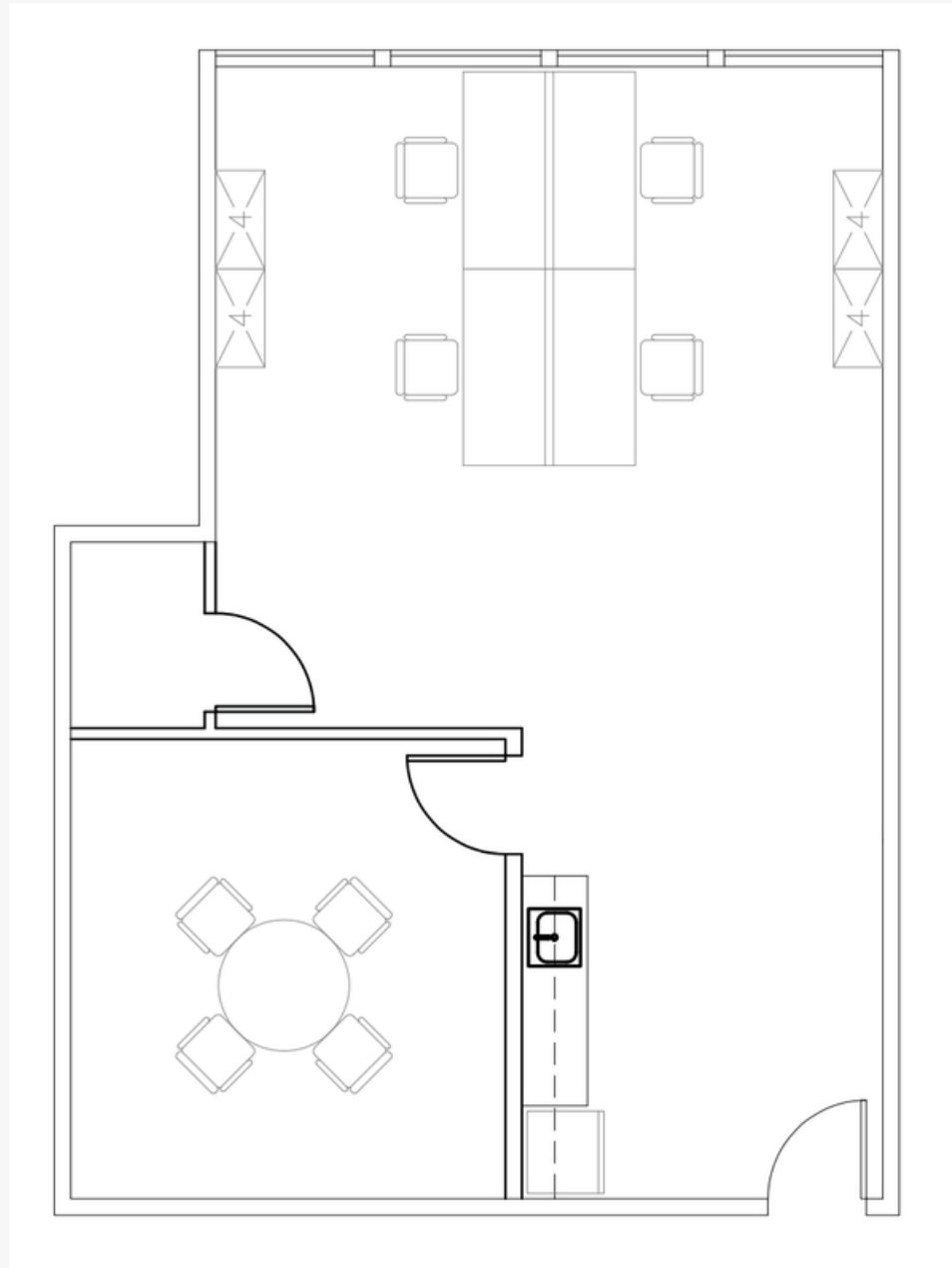




SUITE 205 - 899 SF

FOR LEASE | 4770 DUKE DRIVE





SUITE 207 - 3,520 SF

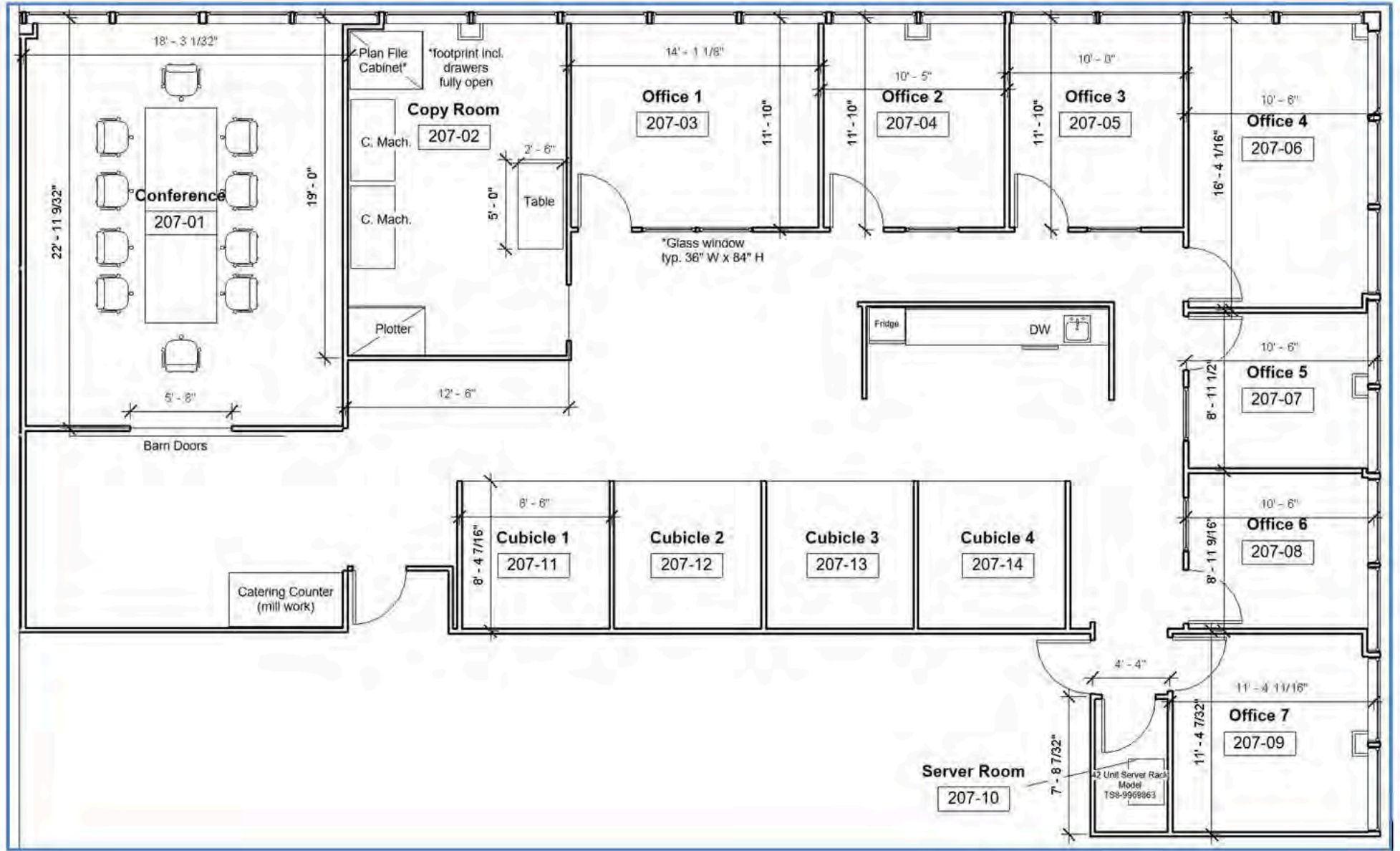
FOR LEASE | 4770 DUKE DRIVE



SUITE 207 - 3,520 SF

FOR LEASE | 4770 DUKE DRIVE





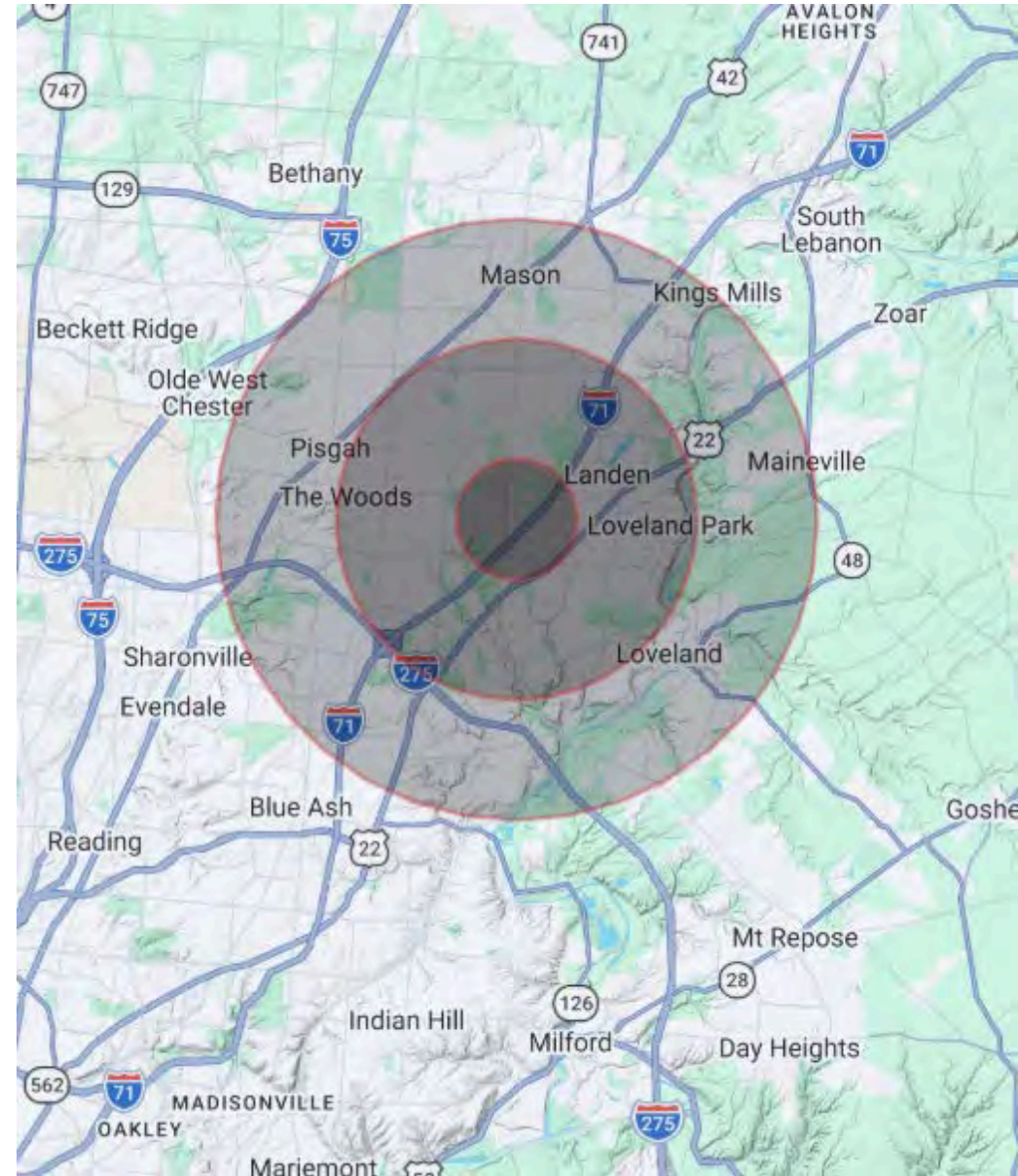


MASON, OH

The Dayton Region sits at the intersection of I-70 and I-75, giving it access to one of the most highly traveled intersections in the United States. In fact, the Dayton Region is within 600 miles of 53% of the U.S. population and 60% of workers currently employed in manufacturing industry, providing short commutes to major markets.

DEMOGRAPHICS

	1 Mile	3 Miles	5 Miles
Population	7,588	66,432	143,974
Households	3,372	26,625	57,090
Average HH Income	\$143,391	\$127,053	\$123,918



THANK YOU

Ryan Van Dulman

rvandulman@bergman-group.com
513.377.0440



STAY CONNECTED

