

FOR LEASE

OFFICE SPACE

35 E. 10TH STREET

TRACY, CA



AVAILABLE SUITE:

Suite D-1: ±381 sq. ft.

LEASE RATE:

\$2.50 psf - Gross

FEATURES:

- Attractive two story office building
- Common restrooms
- 24/7/365 building access
- Ample on-site parking
- Downtown Tracy location
- Phone, Internet and PG&E not included in rent



SOUZA
REALTY &
DEVELOPMENT

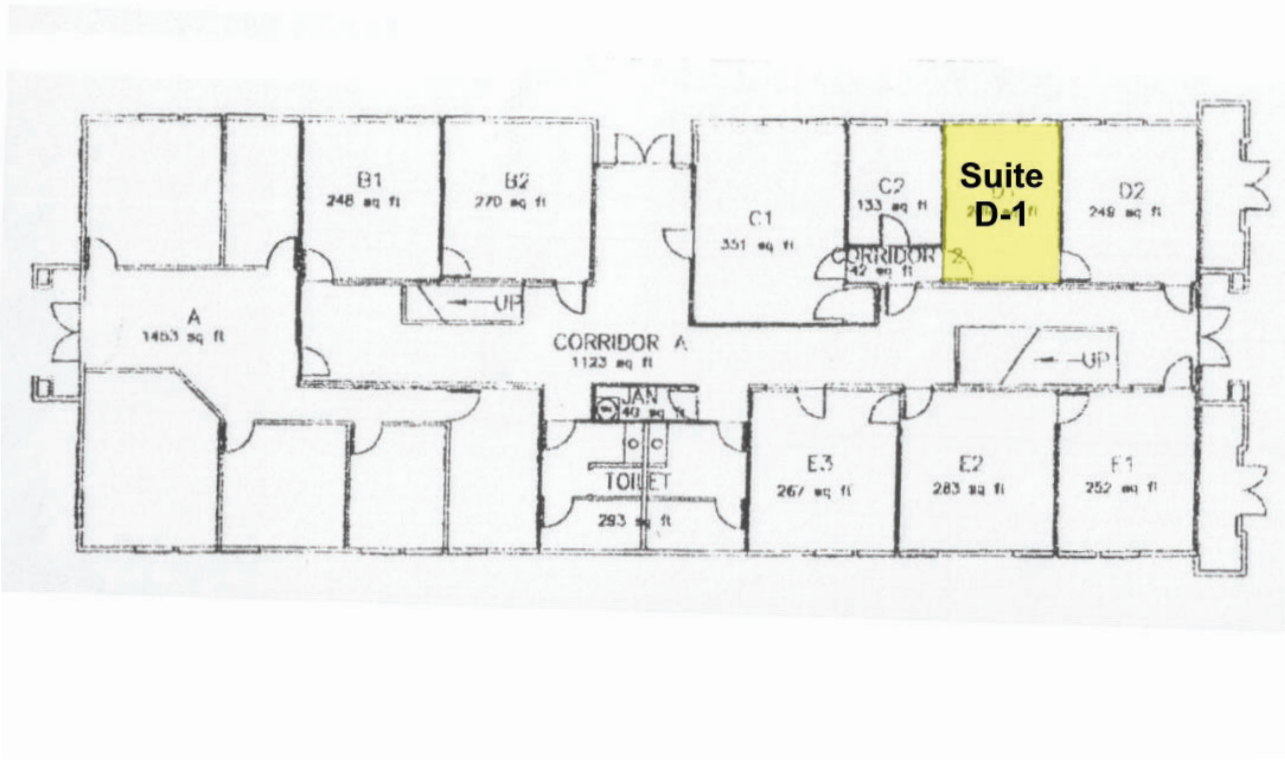
For further information, please contact:

Mike Glazzy
DRE #01204579
mglazzy@souzard.com

672 West 11th Street • Suite 108 • Tracy, CA 95376
(209) 229-7767

The information provided herein has been secured from sources we believe to be reliable, but we make no representation or warranties, express or implied, as to the accuracy of the information. All information should be verified prior to sale or lease.

FIRST FLOOR PLAN



SECOND FLOOR PLAN

