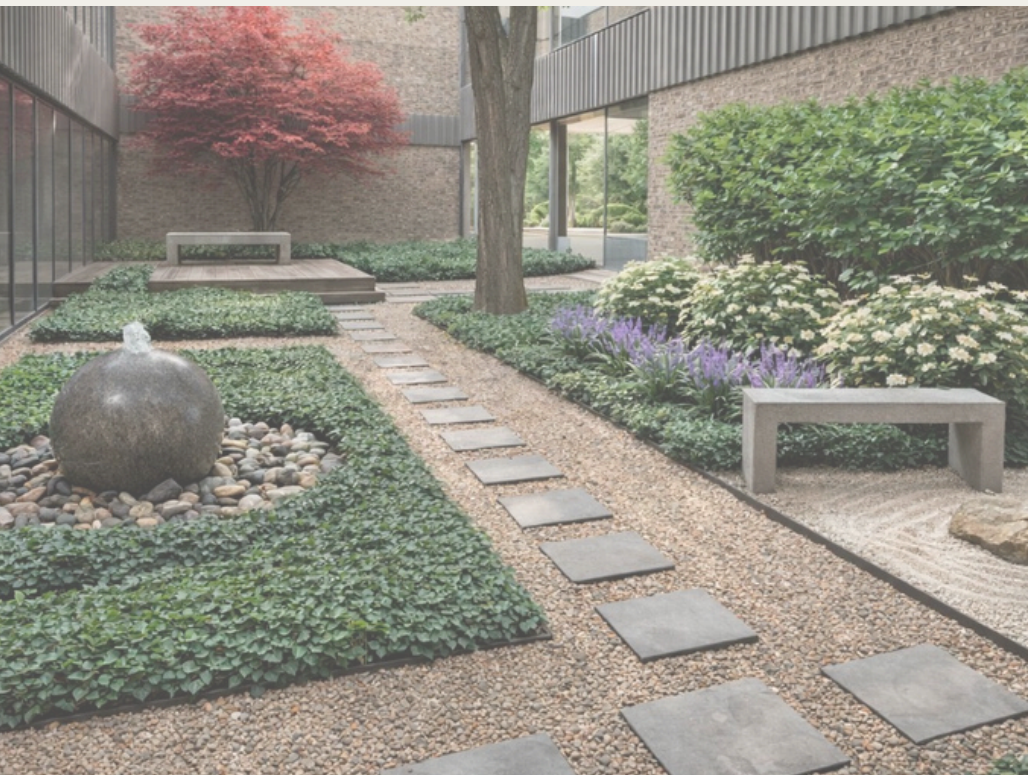


*Office
Building
For Lease*

6330 Lamar

*Located in
Overland Park,
Kansas*



BRAIN GROUP

Sheryl Vickers, CCIM
President - Select Sites
svickers@selectsitesllc.com / 816.916.8400

Kimmy Angier, Associate SIOR
Brain Group - Director of Brokerage
kangier@braingroup.com / 816.806.9596

Katie Ramos
Partner - DLM Commercial
kramos@dmlcommercial.com / 913.219.3178

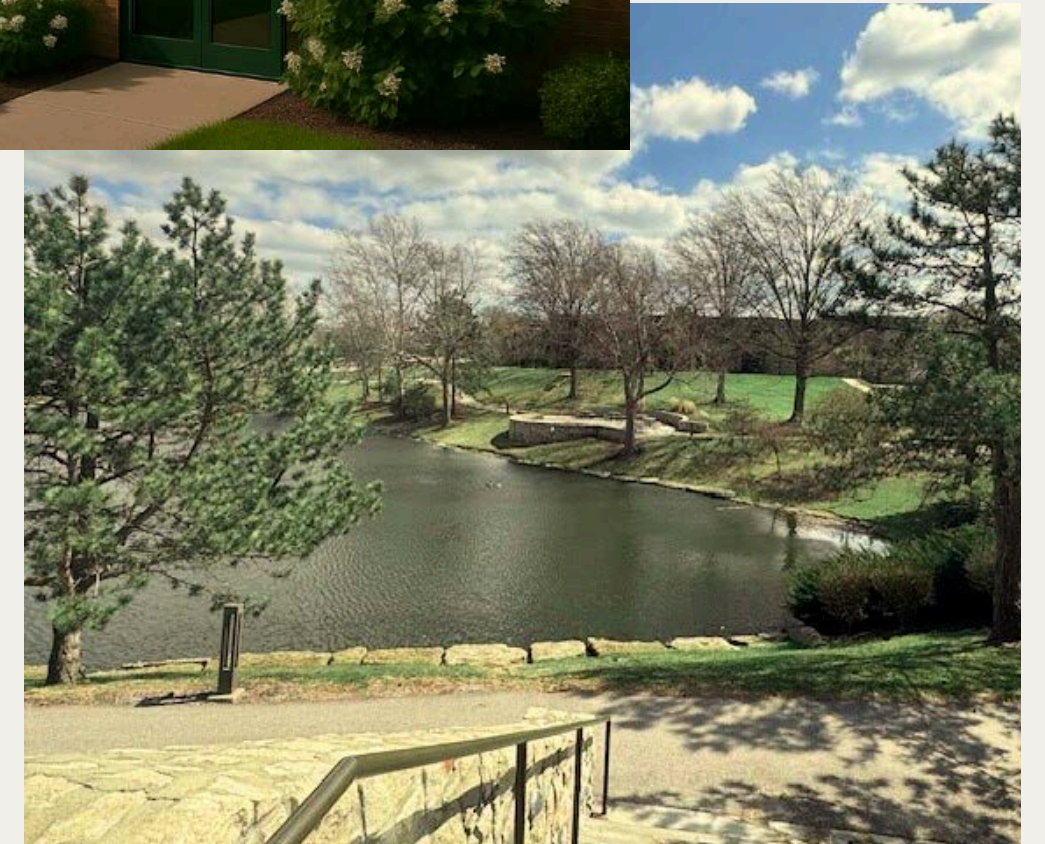
Property Description:

Serene. Flexible. Branded for You.

6330 Lamar is a 50,000 SF Class B+ office building on a 2.53-acre campus in Overland Park, KS, with mature trees, lake views, and a walking trail. The property offers newly renovated suites from 1,500–9,000 SF, with flexible options up to 18,000 SF.

What sets it apart: dedicated exterior entrances with private signage, outdoor patios, and unique amenities including a coffee shop, lakefront views, café on site, Wi-Fi lounges, EV charging, and a meditation garden.

Located just off I-35 and Metcalf Ave, 6330 Lamar provides a peaceful, accessible setting for growing businesses in Johnson County. Contact us below to learn more about leasing opportunities!



Sheryl Vickers, CCIM
President - Select Sites
svickers@selectsitesllc.com / 816.916.8400

Kimmy Angier, Associate SIOR
Brain Group - Director of Brokerage
kangier@braingroup.com / 816.806.9596

Katie Ramos
Partner - DLM Commercial
kramos@dmlcommercial.com / 913.219.3178

Property Highlights:



Offering Summary

Lease Rate:	\$20.00 - 22.00 SF/yr (Full Service)
Available SF:	1,500 - 9,000+ SF
Lot Size:	110,055 SF
Building Size:	50,859 SF

- 1,500–9,000 SF modern office suites, expandable up to 18,000 SF
- Private exterior entrances with prominent signage, patio access, and tenant branding
- Scenic campus with lake views, mature trees, and a walking trail visible from every window
- Outdoor collaboration areas, meditation garden, and wellness-focused amenities
- Upgraded Class B+ building with secure access, elevator, and Wi-Fi lounges
- 65+ surface parking spaces for tenants and visitors
- Prime Johnson County location near Metcalf Ave (38,000 VPD) with easy access to I-35, I-435, and the KC metro
- 100% woman-owned, locally managed property, part of WIRED (Women in Real Estate Development)



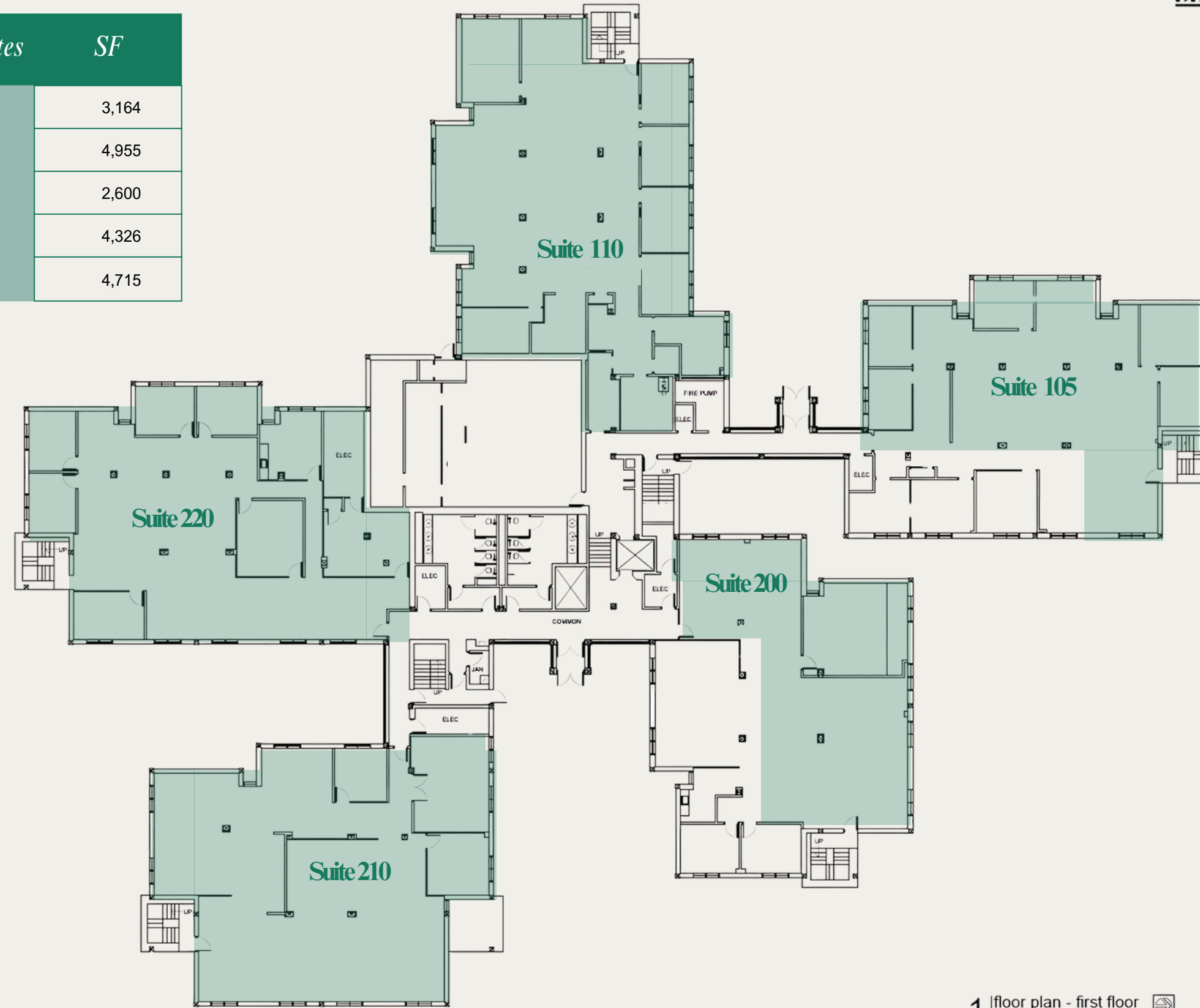
Kimmy Angier, Associate SIOR
Brain Group - Director of Brokerage
kangier@braingroup.com / 816.806.9596

Sheryl Vickers, CCIM
President - Select Sites
svickers@selectsitesllc.com / 816.916.8400

Katie Ramos
Partner - DLM Commercial
kramos@dlimcommercial.com / 913.219.3178

1st Floor Spaces

Available Suites	SF
Suite 105	3,164
Suite 110	4,955
Suite 200	2,600
Suite 210	4,326
Suite 220	4,715



1 floor plan - first floor
scale: 3/32" = 1'-0"



north

sheet number
A2.1
drawing type
as-builts
project number
25105

davidson
architectural engineering

1001 Indian Creek Parkway
Overland Park, KS 66207
phone 913.481.6200
fax 913.481.8381
www.davidsonks.com

an office as-built for
PODS Project
6330 Lamar
Overland Park, Kansas

date
09.19.2025
drawn by
DAE
checked by
DAE
revisions



BRAIN GROUP

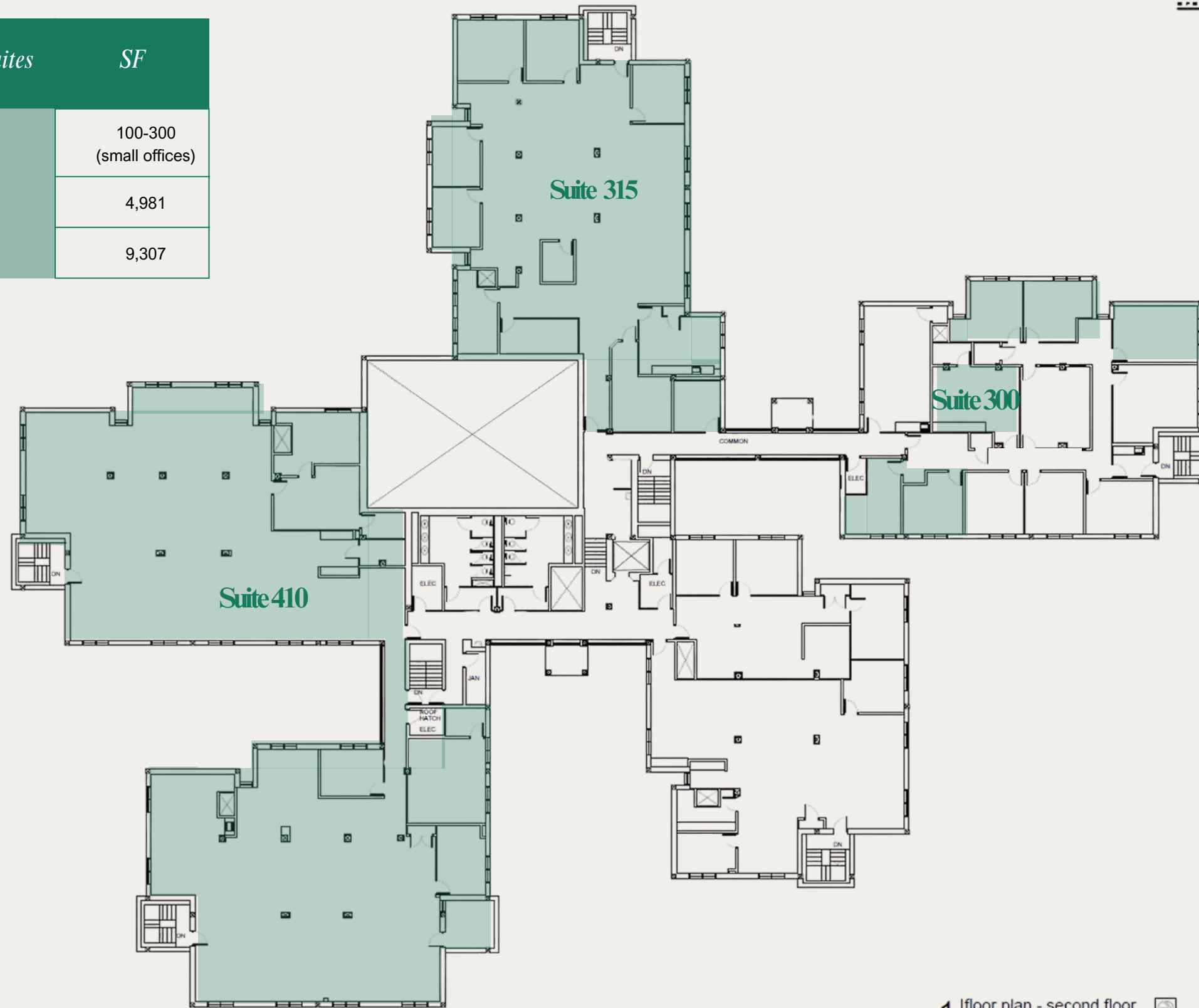
Sheryl Vickers, CCIM
President - Select Sites
svickers@selectsitesllc.com / 816.916.8400

Kimmy Angier, Associate SIOR
Brain Group - Director of Brokerage
kangier@braingroup.com / 816.806.9596

Katie Ramos
Partner - DLM Commercial
kramos@dmlcommercial.com / 913.219.3178

2nd Floor Spaces

Available Suites	SF
Suite 300	100-300 (small offices)
Suite 315	4,981
Suite 410	9,307



Davidson
Architectural Engineering

4001 Indian Creek Parkway
Overland Park, KS 66207
Phone: 913.481.2200
Fax: 913.481.6381
www.davidson.com

an office as-built for
PODS Project
6330 Lamar
Overland Park, Kansas

date
09.19.2025
drawn by
GAE
checked by
GAE
revisions

sheet number
A2.2

drawing type
as-builts
project number
25105

1 floor plan - second floor
scale: 3/32" = 1'-0"



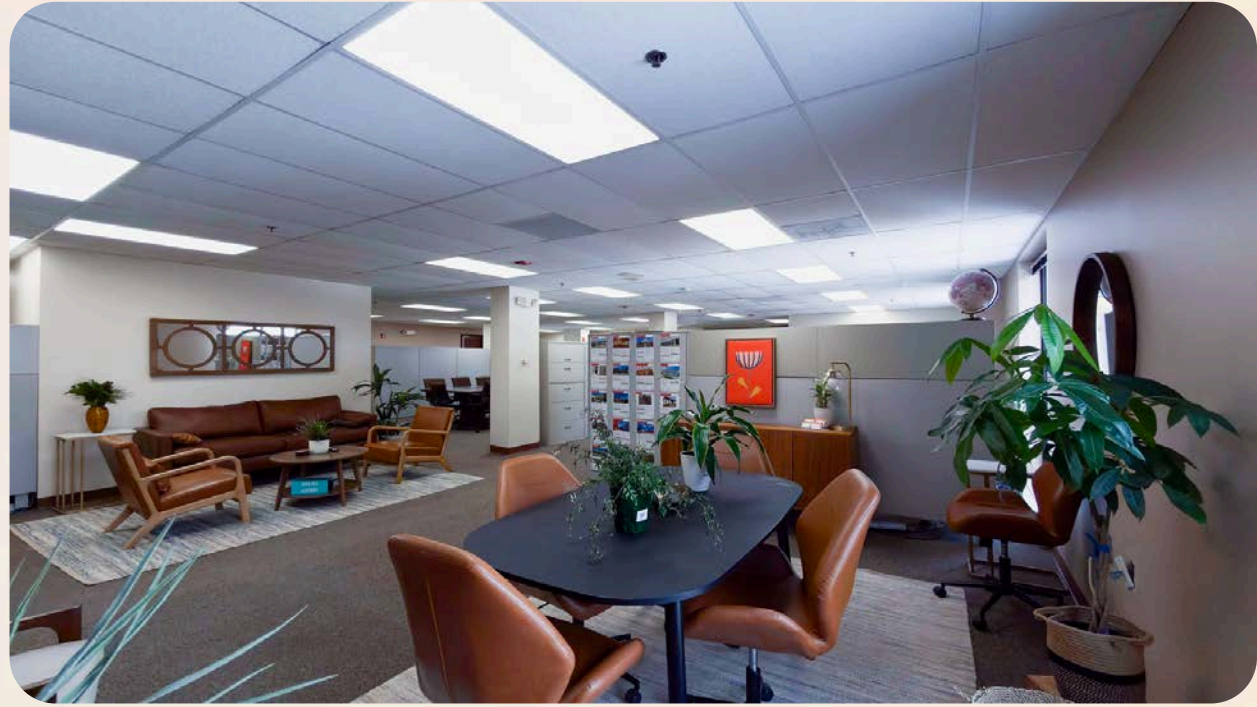
BRAIN GROUP

Sheryl Vickers, CCIM
President - Select Sites
svickers@selectsitesllc.com / 816.916.8400

Kimmy Angier, Associate SIOR
Brain Group - Director of Brokerage
kangier@braingroup.com / 816.806.9596

Katie Ramos
Partner - DLM Commercial
kramos@dmlcommercial.com / 913.219.3178

Building Photos



Sheryl Vickers, CCIM
President - Select Sites
svickers@selectsitesllc.com / 816.916.8400

Kimmy Angier, Associate SIOR
Brain Group - Director of Brokerage
kangier@braingroup.com / 816.806.9596

Katie Ramos
Partner - DLM Commercial
kramos@dmlcommercial.com / 913.219.3178

Virtualy Staged



by Contract Furnishings

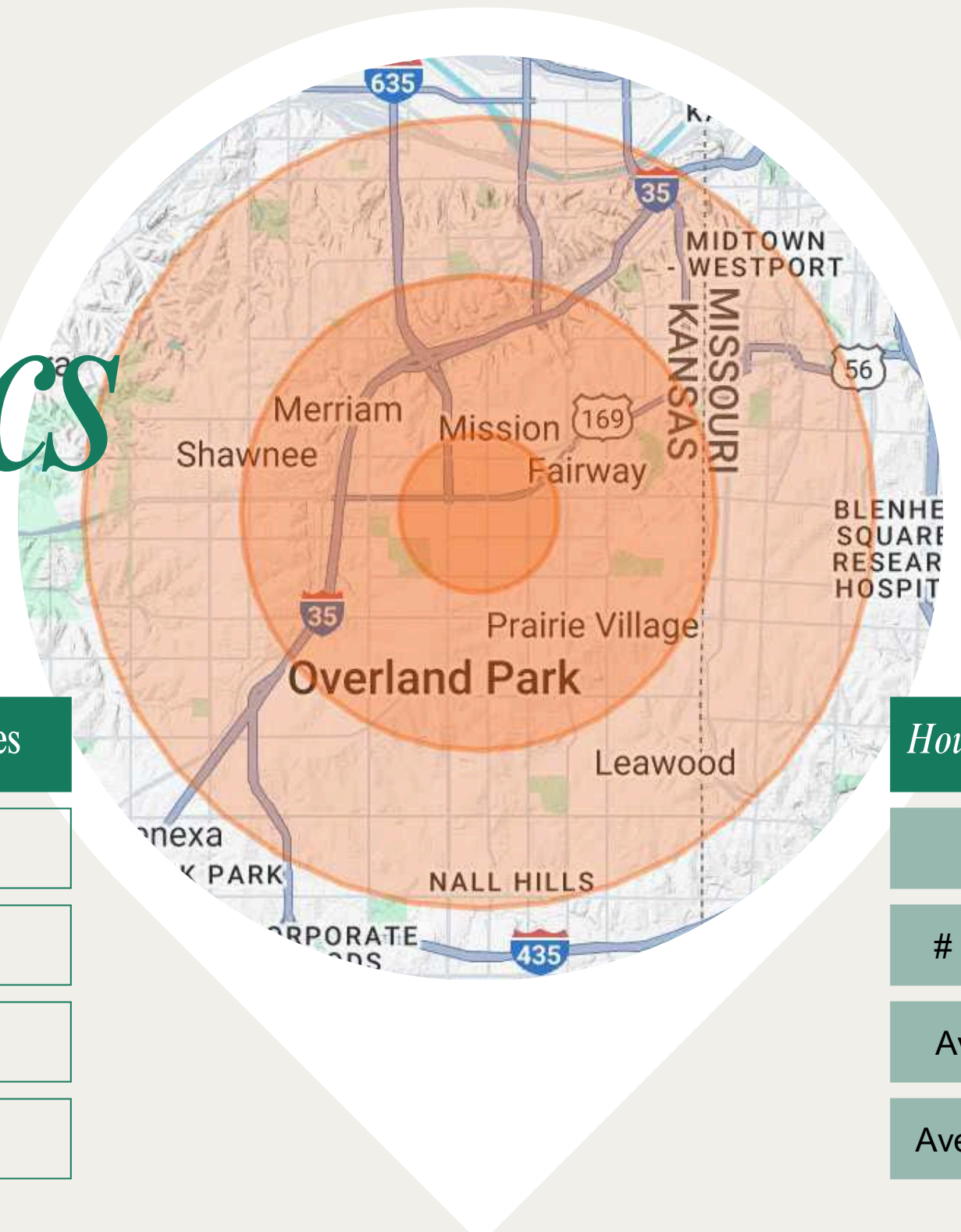


Sheryl Vickers, CCIM
President - Select Sites
svickers@selectsitesllc.com / 816.916.8400

Kimmy Angier, Associate SIOR
Brain Group - Director of Brokerage
kangier@braingroup.com / 816.806.9596

Katie Ramos
Partner - DLM Commercial
kramos@dmlcommercial.com / 913.219.3178

Location & Demographics



<i>Merriam, KS</i>	5 minutes
<i>Prairie Village, KS</i>	10 minutes
<i>Overland Park, KS</i>	10 minutes
<i>Kansas City, MO</i>	12 minutes

<i>Population</i>	<i>1 Mile</i>	<i>3 Miles</i>	<i>5 Miles</i>
Total	9,860	91,285	279,516
Average Age	43	41	40
Average Age (Male)	41	39	39
Average Age (Female)	45	42	41

<i>Households & Income</i>	<i>1 Mile</i>	<i>3 Miles</i>	<i>5 Miles</i>
Total Households	4,678	41,441	125,872
# of Persons per HH	2.1	2.2	2.2
Average HH Income	\$110,128	\$114,573	\$113,188
Average House Value	\$381,829	\$402,810	\$377,153

Demographics data derived from AlphaMap



Sheryl Vickers, CCIM
 President - Select Sites
 svickers@selectsitesllc.com / 816.916.8400

Kimmy Angier, Associate SIOR
 Brain Group - Director of Brokerage
 kangier@braingroup.com / 816.806.9596

Katie Ramos
 Partner - DLM Commercial
 kramos@dmlcommercial.com / 913.219.3178

Contact Us



Sheryl Vickers, CCIM

President - Select Sites
svickers@selectsitesllc.com
816.916.8400



Kimmy Angier, Associate SIOR

Brain Group - Director of Brokerage
kangier@braingroup.com
816.806.9596



Katie Ramos

Partner - DLM Commercial
kramos@dlncommercial.com
913.219.3178



BRAIN GROUP