



341-353 39th Street Brooklyn, NY 11232

Asking Rent: Upon Request

SUNSET POINT RETAIL SPACE FOR LEASE

Property Highlights

- Great exposure to the vehicular traffic on Gowanus Expy
- One block away from Industry City
- At the base of a 130,000 SF Class A office building
- Lower Level with plenty of natural light
- Opportunity for signage with visibility from BQE

Property Facts

CROSS STREETS:	3rd & 4th Avenue
ZONING:	M1-2
GROUND FLOOR:	Space A: 10,244 SF Space B: 5,392 SF
FRONTAGE:	60' *
LOWER LEVEL:	13,050 SF
RE TAXES:	Pro Rata
DELIVERY:	3Q 2018

Neighboring Tenants



Transportation

- Walking distance to the D, N, & R trains
- Average of 141,821 vehicles daily along the Gowanus Expy

For Further Information, Please Contact Exclusive Sales Team:

Timothy D. King | 718.687.4210 | tking@cpexre.com Dimitri P. Venekas | 718.208.1843 | dvenekas@cpexre.com

Edward Nelson | 718.935.1821 | enelson@cpexre.com



REAL ESTATE

All information contained herein was provided by or obtained from the owner of the property or from sources that we deem reliable. Though we have no reason to doubt the validity of the information, we do not warrant any information disclosed. It is strongly urged that the prospective tenant carefully verify each item of size. RE Taxes, permitted legal use, and other information presented herein.

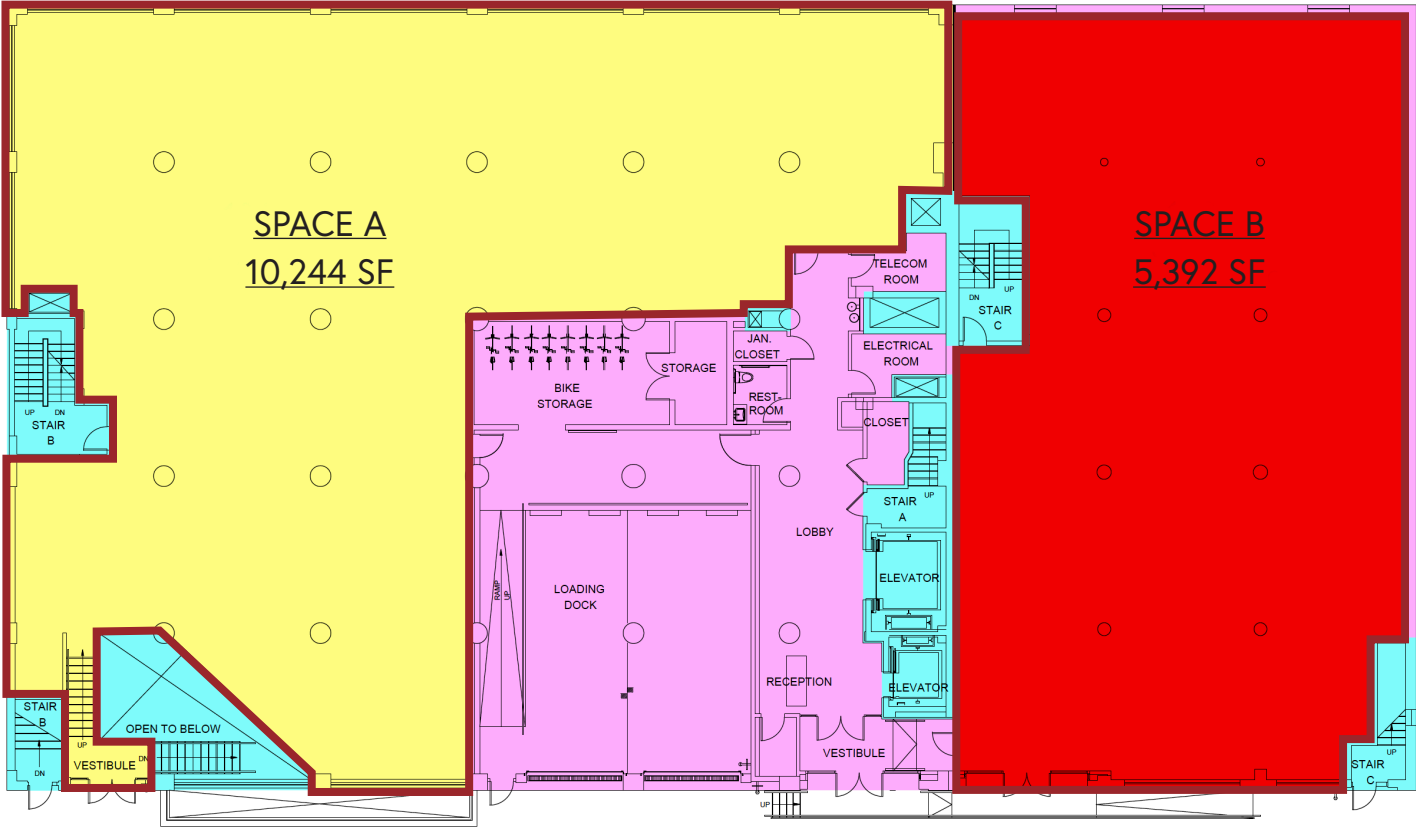
81 WILLOUGHBY STREET, 8TH FLOOR, BROOKLYN, NY 11201

P: 718.935.1800

CPEXRE.COM

341-353 39th, Brooklyn, NY 11232

Asking Rent: Upon Request



39TH ST

For Further Information, Please Contact Exclusive Sales Team:

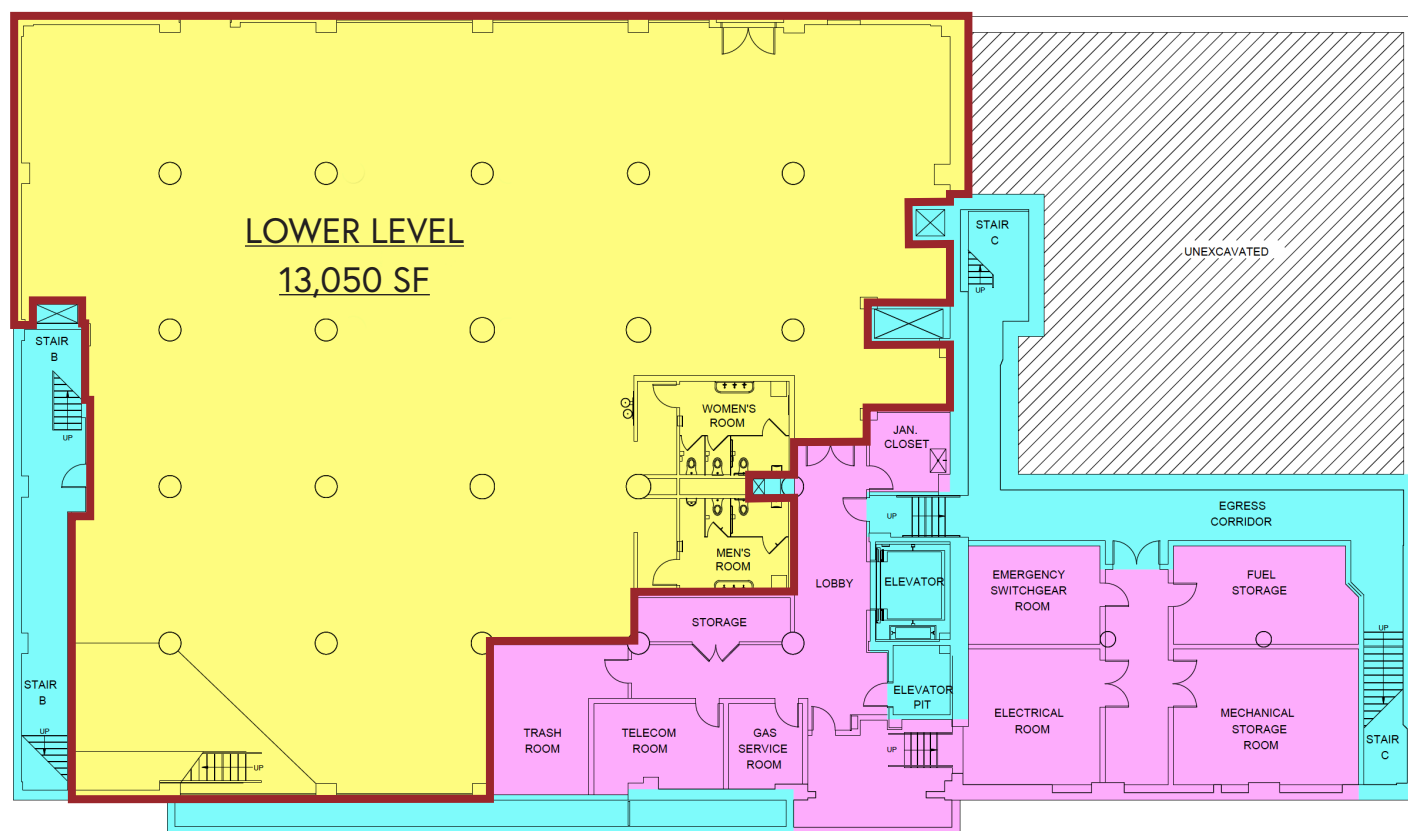
Timothy D. King | 718.687.4210 | tking@cpexre.com Dimitri P. Venekas | 718.208.1843 | dvenekas@cpexre.com
Edward Nelson | 718.935.1821 | enelson@cpexre.com



All information contained herein was provided by or obtained from the owner of the property or from sources that we deem reliable. Though we have no reason to doubt the validity of the information, we do not warrant any information disclosed. It is strongly urged that the prospective tenant carefully verify each item of size, RE Taxes, permitted legal use, and other information presented herein.

341-353 39th, Brooklyn, NY 11232

Asking Rent: Upon Request



39TH ST

For Further Information, Please Contact Exclusive Sales Team:

Timothy D. King | 718.687.4210 | tking@cpexre.com Dimitri P. Venekas | 718.208.1843 | dvenekas@cpexre.com

Edward Nelson | 718.935.1821 | enelson@cpexre.com

CP \neq **X**

REAL ESTATE

All information contained herein was provided by or obtained from the owner of the property or from sources that we deem reliable. Though we have no reason to doubt the validity of the information, we do not warrant any information disclosed. It is strongly urged that the prospective tenant carefully verify each item of size, RE Taxes, permitted legal use, and other information presented herein.

81 WILLOUGHBY STREET, 8TH FLOOR, BROOKLYN, NY 11201

P: 718.935.1800

CPXRE.COM