

# MEDICAL OFFICE BUILDING - IMPROVED AS A DIALYSIS FACILITY! FOR SALE OF LEASE

2350 NORTH CALIFORNIA STREET | STOCKTON | CA

## LISTING DATA

**AVAILABLE SF:** Approximately 6,690± square foot  
medical building

**PARCEL SIZE:** Approximately 1.17 Acre site

## FEATURES:

- Large parcel situated within Stockton's prime medical corridor within a block of (and walking distance to) St. Josephs Medical Center.
- Easily accessible off North California Street.
- Plenty of (code compliant) parking.
- Expandable - Can be Built-out up to ±10,000 SF.
- Access must be pre-arranged with agent.

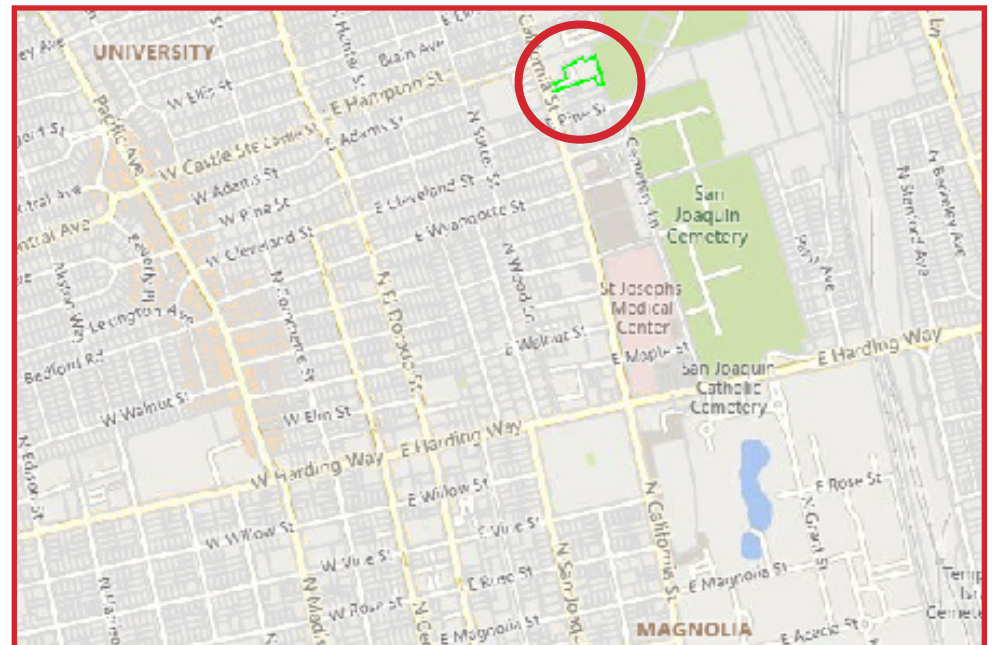
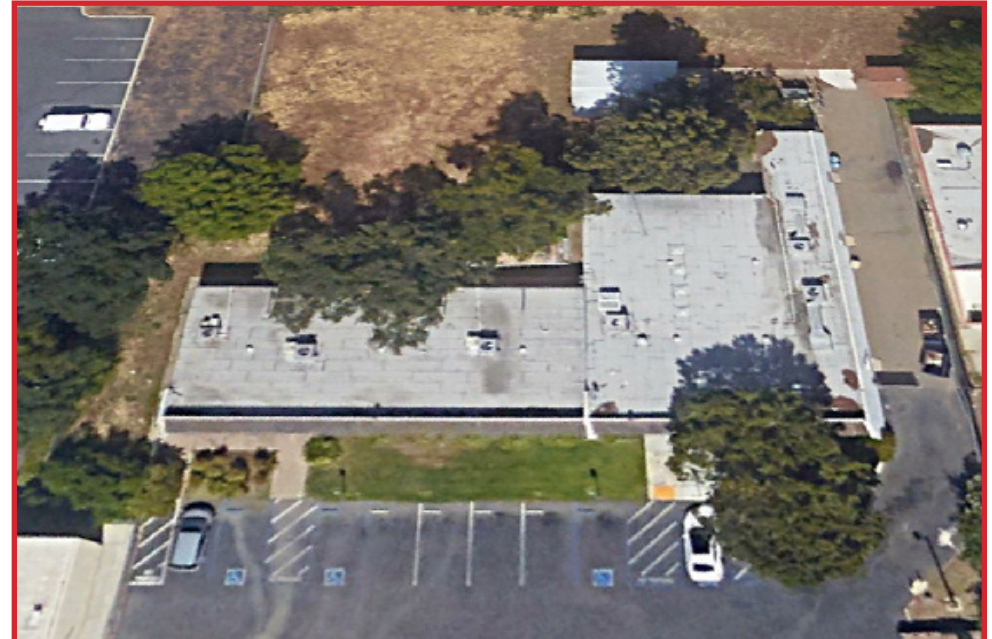
## ECONOMIC DATA

**LEASE RATE:** \$2.00 PSF NNN

**PRICE:** \$1,700,000.00

## CONTACT

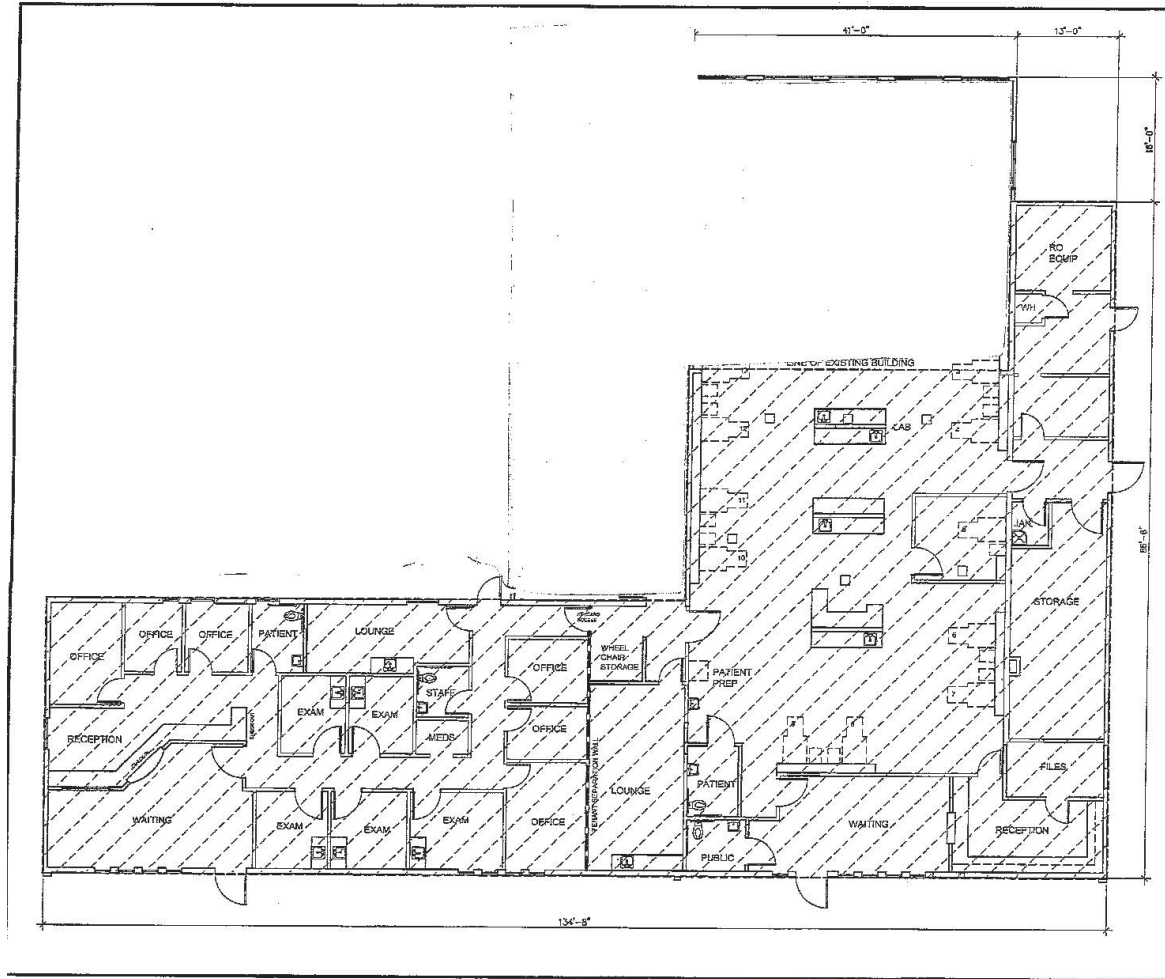
Wendy Coddington, SIOR  
BRE #00592566  
wcoddington@lee-associates.com  
D 209.983.6830



# MEDICAL OFFICE BUILDING - IMPROVED AS A DIALYSIS FACILITY! FOR SALE OF LEASE

2350 NORTH CALIFORNIA STREET | STOCKTON | CA

## FLOOR PLAN



## CONTACT

Wendy Coddington, SIOR  
BRE #00592566  
wcoddington@lee-associates.com  
D 209.983.6830

All information furnished regarding property for sale, rental or financing is from sources deemed reliable, but no warranty or representation is made to the accuracy thereof and same is submitted to errors, omissions, change of price, rental or other conditions prior to sale, lease or financing or withdrawal without notice. No liability of any kind is to be imposed on the broker herein.

# MEDICAL OFFICE BUILDING - IMPROVED AS A DIALYSIS FACILITY! FOR SALE OF LEASE

2350 NORTH CALIFORNIA STREET | STOCKTON | CA



CALIFORNIA STREET

PINE STREET

Wendy Coddington, SIOR  
BRE #00592566  
wcoddington@lee-associates.com  
D 209.983.6830