



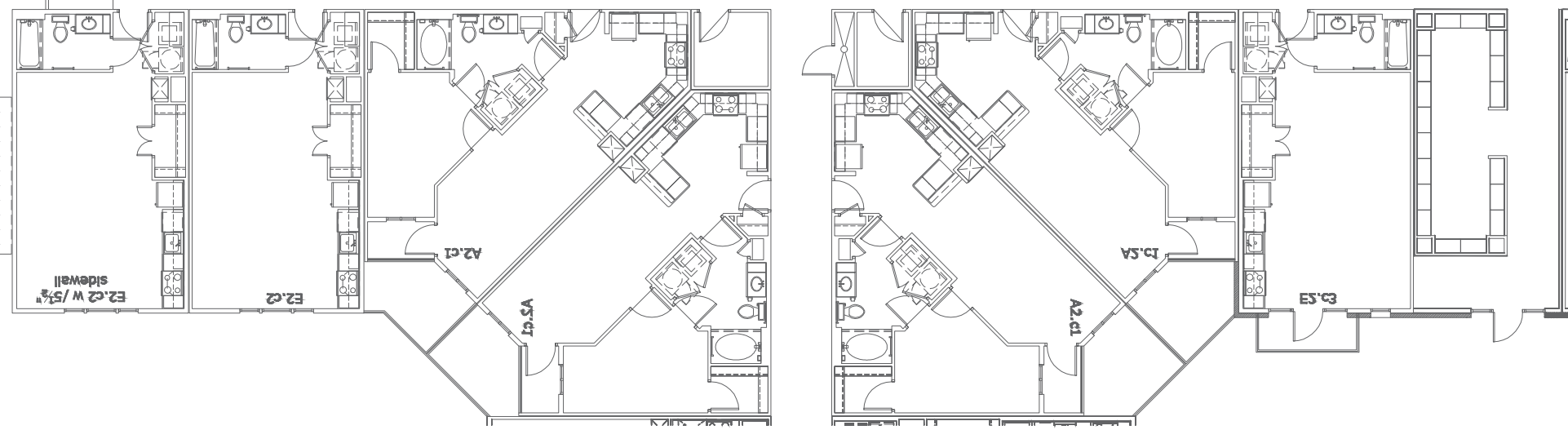
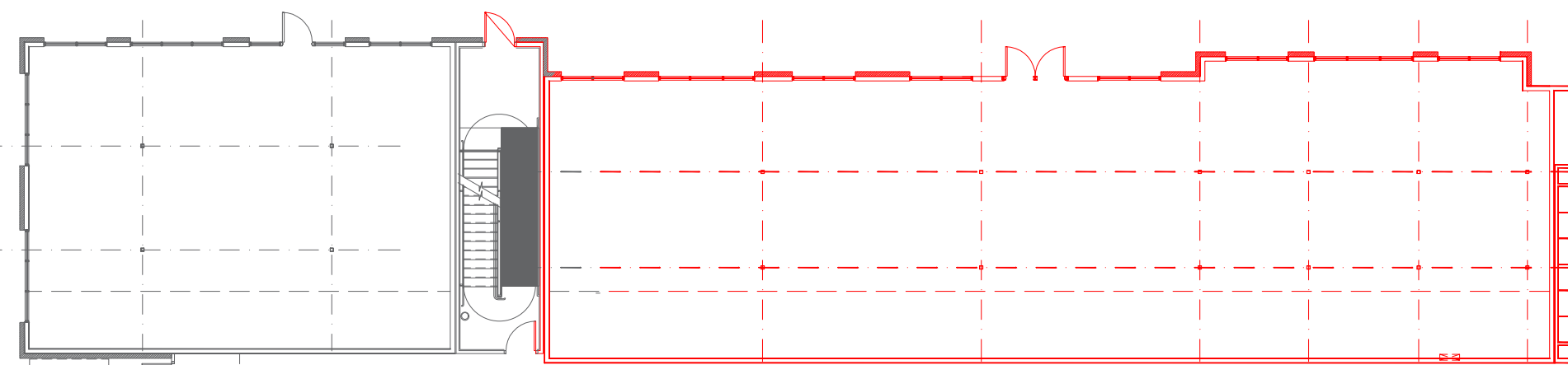
M.A.HUNT, P.E.
96 FIELDFARE WAY
CHARLESTON, S.C., 29414
phone: 843-696-7623
huntengconsultants@hotmail.com

SEALS

M.A.HUNT, P.E.
96 FIELDFARE WAY
CHARLESTON, S.C., 29414
843-696-7623
HUNTENGCONSULTANTS@HOTMAIL.COM

BLUE SKY ENDURANCE
@THE BOULEVARD
COLEMAN BLVD, Mt. PLEASANT

COLEMAN BLVD



OCCUPANCY LOAD CALCULATIONS
GROSS AREA = 3,021 RETAIL USE (OCCUPANCY M)

RETAIL = 1614 SQ.FT.
OCCUPANCY LOAD = 1614/30 = 54

OFFICE = 213 SQ.FT.
OCCUPANCY LOAD = 213/60 = 3

STORAGE = 180 SQ.FT.
OCCUPANCY LOAD = 180/300 = 1

POOL = 506 SQ.FT.
OCCUPANCY LOAD = 2 PER OPERATING
REQUIREMENTS

BATHROOMS AND SHOWERS = 5

TOTAL = 65
CONSTRUCTION TYPE - VA

FIRE RESISTANCE RATING - 1 HOUR ALL BLDG ELEMENTS

FIRE RATING REQUIREMENTS FOR EXTERIOR WALLS BASED
ON FIRE SEPARATION DISTANCE - 1 HOUR ALL GROUPS

BATHROOM FIXTURES REQUIRED
WATER CLOSETS - 1/75 MEN AND WOMEN
LAVATORIES - 1/200
DRINKING FOUNTAIN 1/500
ADA HI AND LO REQUIRED

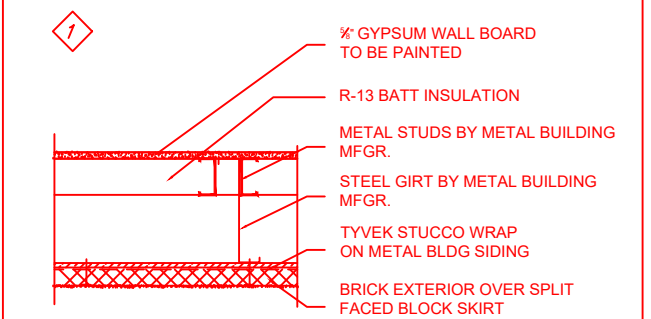
MAXIMUM EGRESS DISTANCE - 55' 3"
EGRESS DOORS - 36" REQUIRED, 108" PROVIDED.
ADDITIONAL ACCESS REQUIRED DUE TO OCCUPANCY
EXCEEDING 49.

PARKING - GENERAL PARKING PROVIDED BY THE
BOULEVARD COMPLEX.

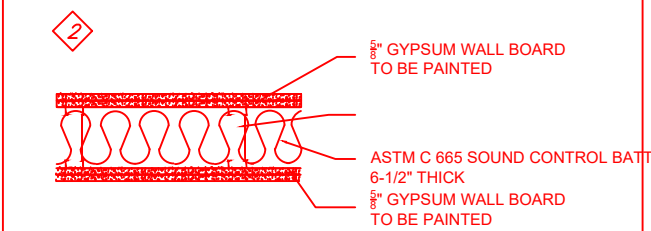
DRYWALL INSTALLATION NOTES

1. CEILING IS USG DRYWALL SUSPENSION SYSTEM OR EQUAL. VERIFY ENTIRE CEILING LAYOUT IN FIELD PRIOR TO INSTALLATION OF ANY CEILING MATERIAL OR EQUIPMENT. ANY DEVIATION FROM THE REFLECTED CEILING PLAN SHALL HAVE PRIOR APPROVAL FROM THE ARCHITECT OR THE ARCHITECT'S REPRESENTATIVE IN THE FIELD. THE INSTALLER SHALL PROVIDE THE ARCHITECT (THROUGH THE GENERAL CONTACTOR) A REFLECTED CEILING PLAN SHOWING ANY REQUESTED CHANGES.
2. FLAT CEILINGS CONSTRUCTED OF LATH AND PLASTER OR GYPSUM BOARD, SCREW OR NAIL ATTACHED TO SUSPENSION MEMBERS THAT SUPPORT A CEILING ON ONE LEVEL EXTENDING FROM WALL TO WALL ARE GENERALLY EXEMPT FROM SEISMIC CONSTRUCTION REQUIREMENTS. SEE DISCA RECOMMENDATION FOR DIRECT-HUNG ACOUSTICAL TILE AND LAY IN PANEL CEILINGS, GUIDELINES FOR SEISMIC RESTRAINT FOR SUSPENDED CEILING ASSEMBLIES, SEISMIC ZONES 3-4 (SEISMIC DESIGN CATEGORIES D, E, AND F)
3. WHERE DRYWALL DOES NOT EXTEND FROM WALL TO WALL, INSTALL ACM7 SEISMIC CLIP DESIGNED TO SECURE DGW26s MAIN TEES TO WALL MOLDING, PREVENTING MOVEMENT OF CEILING ASSEMBLY DURING A SEISMIC EVENT.
4. SEE USG-DRYWALL-SUSPENSION STYLE GUIDANCE FOR INSTALLATION INSTRUCTIONS.
5. SEE DOWNTOWN TECHNICAL GUIDE FOR SUSPENDED CEILING SEISMIC ASSEMBLIES IN SEISMIC ZONE D FOR INSTALLATION INSTRUCTIONS.

WALL TYPES



EXTERIOR BEARING WALL.
STEEL GIRT BY METAL BUILDING MFG. WITH 3-1/2" METAL INFILL STUD WALL. PROVIDE 2" GYP BD TO BE PAINTED. PROVIDE BATT INSULATION & TYVEK BUILDING WRAP OVER 1/2" EXTERIOR GRADE DENS GLASS SHEATHING. EXTERIOR SIDE STUCCO.



INTERIOR BEARING, 1 HOUR FIRE WALL.
1" METAL STUD WALL. EXTEND TO STRUCTURE ABOVE AT 16" O.C. PROVIDE 5/8" GYP BD BOTH SIDES TO BE PAINTED. PROVIDE SOUND BATT INSULATION & WATER RESISTANT GYPSUM BOARD AT RESTROOMS.



INTERIOR BEARING.
3/8" METAL STUD WALL @ 16" O.C. EXTEND TO 6" ABOVE CEILING. PROVIDE 5/8" GYP BD BOTH SIDES TO BE PAINTED.

