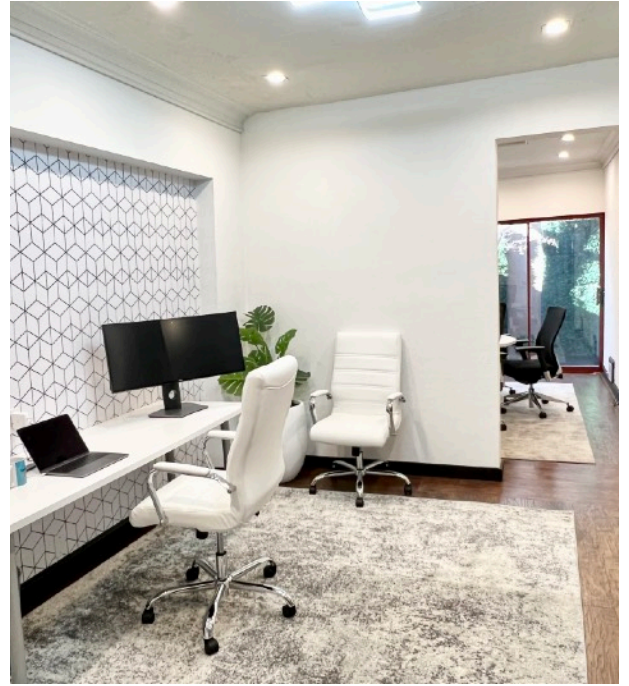


# Suite 103

## 15 N. Ellsworth, San Mateo



### **Suite 103 – Stylish, Modern Office Space with Garden Views**

Suite 103 is a thoughtfully designed modern office space that combines style, comfort, and functionality. With character that sets it apart, this suite offers a professional yet inviting atmosphere perfect for today's dynamic work environment.

The layout includes two dedicated workroom areas, a spacious conference room with serene garden views, and a cozy coffee bar and lounge area—ideal for relaxed meetings or focused breaks. The tasteful interior design exudes modern vibes that naturally stimulate productivity.

Beautiful hardwood floors and a private patio add a distinctive charm, creating a space where you'll actually enjoy spending your workday. You'll also have access to an additional shared patio—perfect

for outdoor lunches, breakout sessions, or moments of inspiration.

Suite 103 is fiber-optics ready, ensuring high-speed internet to meet all your business needs. The office also features a private restroom, extra storage, and a quiet, private setting to enhance convenience and professionalism.

Don't miss the opportunity to lease this unique and inspiring workspace—an ideal home for your growing business.

- \* 1,245 Sqft office space
- \* Downtown San Mateo
- \* 2 Minutes walk to Caltrain
- \* Onsite reserved parking available

