

# 240 EAST 4TH STREET

BETWEEN AVENUE A & AVENUE B | EAST VILLAGE

**CUPS  
OF  
PASTA**

LEASED

SPACE A

# 240 EAST 4TH STREET

BETWEEN AVENUE A & AVENUE B | EAST VILLAGE

## PROPERTY HIGHLIGHTS

- Space A - fully built-out pizza restaurant
- Gas and venting in place with a built-out hood
- Located off Avenue B in the East Village
- High foot traffic corridor surrounded by strong nightlife and dining
- Neighboring tenants include:

*Walgreen's, Citibank, Aquarelle, Key Food, Union Market, Domakase, Venhue, Poco NYC, Katz's Delicatessen, The Mercury Lounge, Little Myanmar, Duane Reade, The Library, Mama's Bar, Book Club Bar, & many more!*

**SPACE A:** 1.400 SF Ground Floor

**SPACE B:** LEASED 400-SF Ground Floor

**FRONTAGE:** A: 19' | B: 7'

**POSSESSION:** Immediate

**ASKING RENT:** Space A: \$9,000/month  
Space B: \$4,000/month

**TRANSPORTATION:** F M J Z L



# 240 EAST 4TH STREET

BETWEEN AVENUE A & AVENUE B | EAST VILLAGE

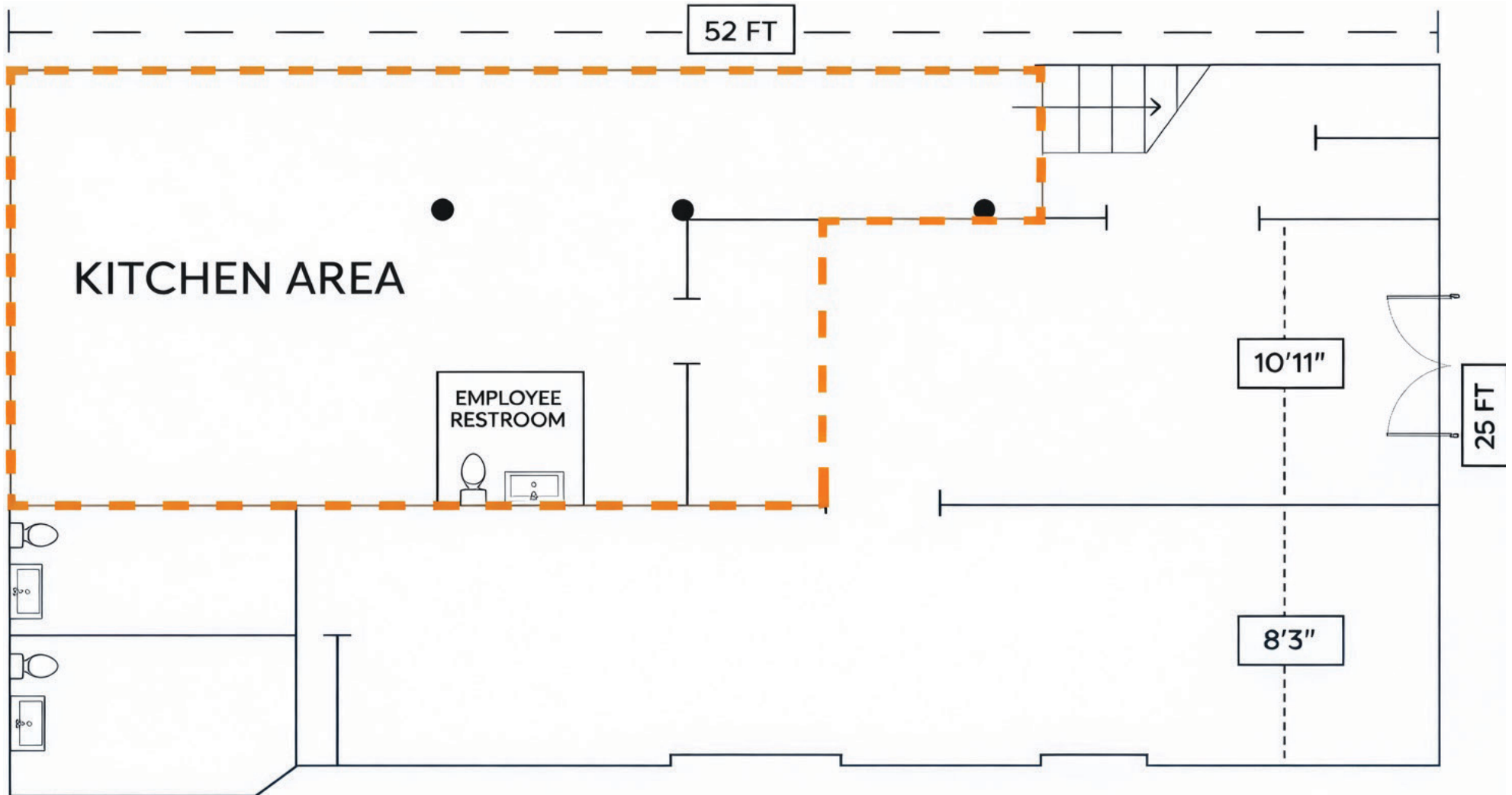
SPACE A INTERIORS:



# 240 EAST 4TH STREET

BETWEEN AVENUE A & AVENUE B | EAST VILLAGE

FLOOR PLANS (SPACE A):  
GROUND FLOOR - 1,400 SF



# 240 EAST 4TH STREET

---

BETWEEN AVENUE A & AVENUE B | EAST VILLAGE

FOR MORE INFORMATION,  
PLEASE CONTACT:

**BEN NAMDAR**

516.406.9176 | [BNamdar@ksrny.com](mailto:BNamdar@ksrny.com)

**ALBERT SALAMEH**

646.944.0797 | [ASalameh@ksrny.com](mailto:ASalameh@ksrny.com)

**DAVID GREEN**

516.320.0260 | [DGreen@ksrny.com](mailto:DGreen@ksrny.com)

