

FOR SALE, GROUND LEASE, OR BTS

SANTAQUIN RETAIL LAND



## PROPERTY DETAILS

860 E. Main St., Santaquin, UT 84655

- 6.12 Acres Available
- Part of major UDOT redevelopment area for Main Street Interchange and East Main Street
- Great Visibility from I-15 on Santaquin's busiest Exit
- New Retail Development
- Fast Growth Area
- Located off I-15 Exit | Entrance
- High-Performing Maverik with over 1.1 Million annual visitors
- Contact Listing Agents for more information

### SURROUNDING TENANTS



## 2025 DEMOS



### EST. POPULATION

1 MILE » 6,539  
 3 MILE » 19,145  
 5 MILE » 36,451



### EST. HOUSEHOLDS

1 MILE » 1,765  
 3 MILE » 5,151  
 5 MILE » 10,046



### EST. AVERAGE HH INCOME

1 MILE » \$109,702  
 3 MILE » \$116,079  
 5 MILE » \$113,730

# NEWMARK

## MOUNTAIN WEST

**RYAN STEWART**  
 rstewart@newmarkmw.com  
 direct 801.578.5541  
[View Profile](#)

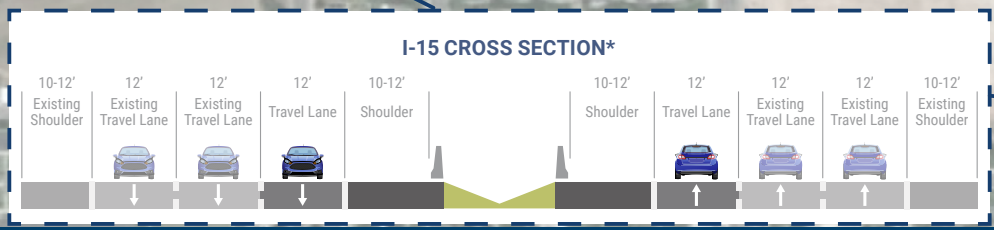
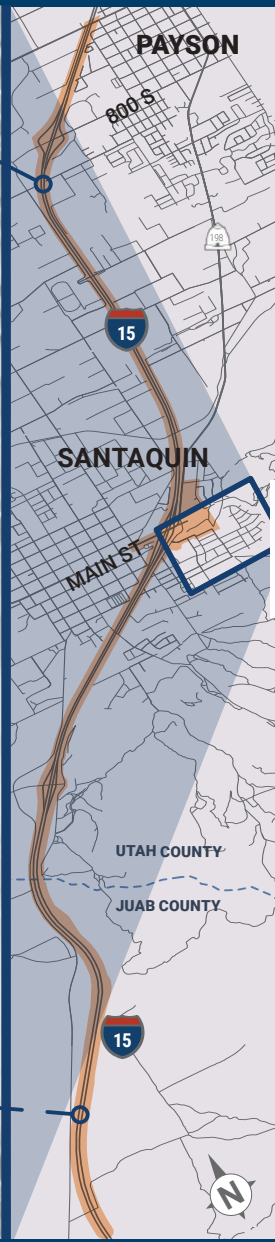
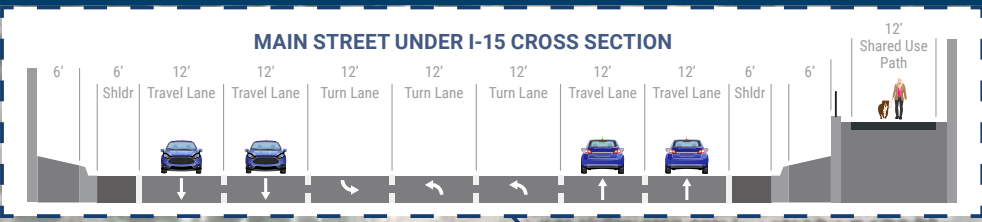
**SCOTT BRADY**  
 sbrady@newmarkmw.com  
 direct 801.456.8804  
[View Profile](#)

**ERIK HULBERT**  
 ehulbert@newmarkmw.com  
 direct 801.692.6886  
[View Profile](#)

DEVELOPED BY



FULL SERVICE  
 COMMERCIAL REAL ESTATE  
 312 East South Temple  
 Salt Lake City, Utah 84111  
 Office 801.456.8800  
[www.newmarkmw.com](http://www.newmarkmw.com)



**RYAN STEWART**  
 rstewart@newmarkmw.com  
 direct 801.578.5541  
[View Profile](#)

**SCOTT BRADY**  
 sbrady@newmarkmw.com  
 direct 801.456.8804  
[View Profile](#)

**ERIK HULBERT**  
 ehulbert@newmarkmw.com  
 direct 801.692.6886  
[View Profile](#)



FULL SERVICE  
 COMMERCIAL REAL ESTATE  
 312 East South Temple  
 Salt Lake City, Utah 84111  
 Office 801.456.8800  
[www.newmarkmw.com](http://www.newmarkmw.com)

This statement with the information it contains is given with the understanding that all negotiations relating to the purchase, renting or leasing of the property described above shall be conducted through this office. The above information while not guaranteed has been secured from sources we believe to be reliable.



# NEWMARK

## MOUNTAIN WEST

**RYAN STEWART**  
 rstewart@newmarkmw.com  
 direct 801.578.5541  
[View Profile](#)

**SCOTT BRADY**  
 sbrady@newmarkmw.com  
 direct 801.456.8804  
[View Profile](#)

**ERIK HULBERT**  
 ehulbert@newmarkmw.com  
 direct 801.692.6886  
[View Profile](#)

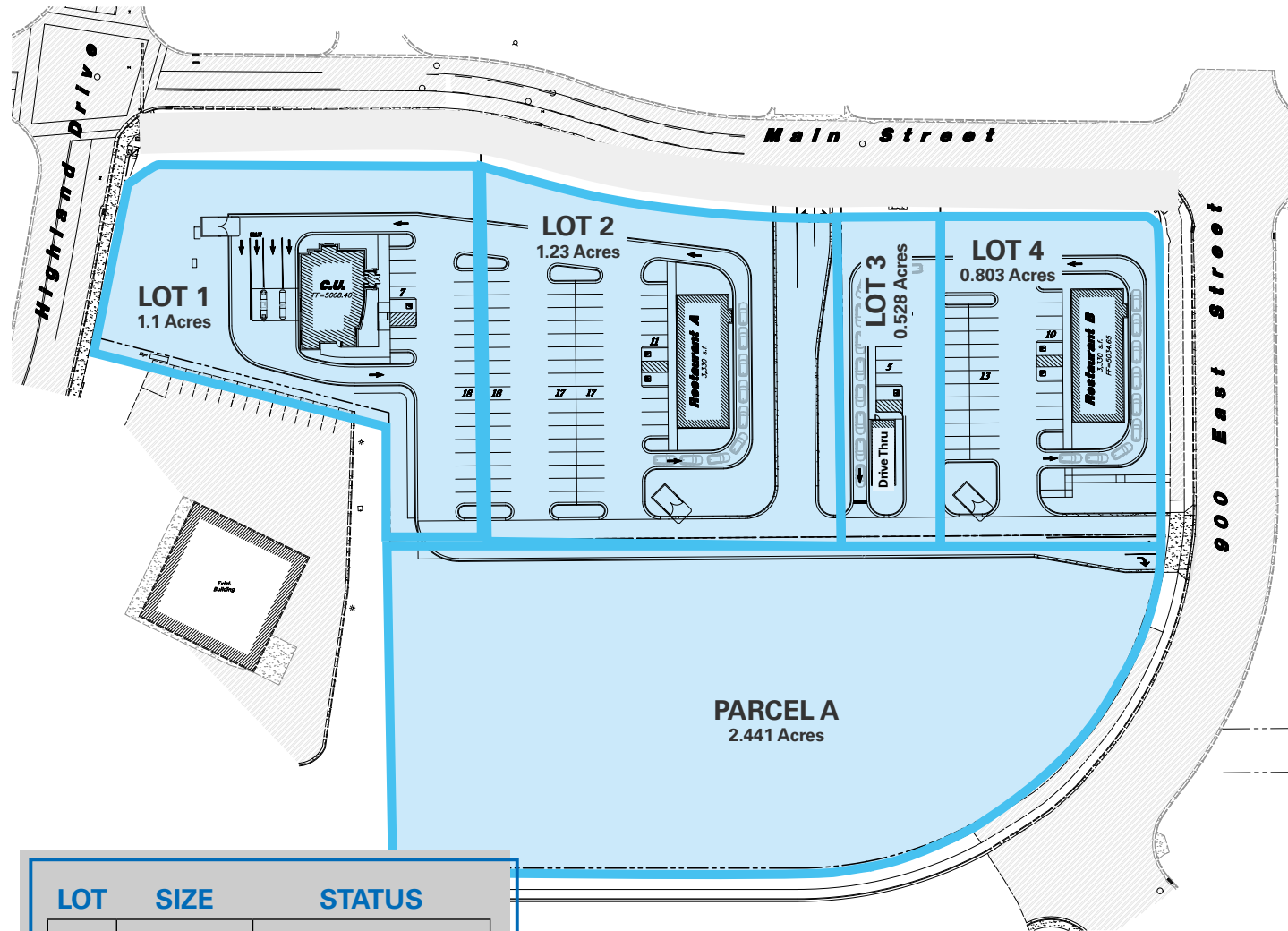
DEVELOPED BY



**FULL SERVICE  
 COMMERCIAL REAL ESTATE**  
 312 East South Temple  
 Salt Lake City, Utah 84111  
 Office 801.456.8800  
[www.newmarkmw.com](http://www.newmarkmw.com)

# SANTAQUIN RETAIL LAND

## SITE PLAN



LOT	SIZE	STATUS
1	1.1 Acres	CREDIT UNION
2	1.23 Acres	RESTAURANT A
3	0.528 Acres	DRIVE THRU
4	0.803 Acres	RESTAURANT B
A	2.441 Acres	AVAILABLE

- LEASED
- UNDER CONTRACT
- AVAILABLE

# NEWMARK

**MOUNTAIN WEST**

**RYAN STEWART**  
 rstewart@newmarkmw.com  
 direct 801.578.5541  
[View Profile](#)

**SCOTT BRADY**  
 sbrady@newmarkmw.com  
 direct 801.456.8804  
[View Profile](#)

**ERIK HULBERT**  
 ehulbert@newmarkmw.com  
 direct 801.692.6886  
[View Profile](#)

DEVELOPED BY



**FULL SERVICE  
 COMMERCIAL REAL ESTATE**  
 312 East South Temple  
 Salt Lake City, Utah 84111  
 Office 801.456.8800  
[www.newmarkmw.com](http://www.newmarkmw.com)



**RYAN STEWART**  
 rstewart@newmarkmw.com  
 direct 801.578.5541  
[View Profile](#)

**SCOTT BRADY**  
 sbrady@newmarkmw.com  
 direct 801.456.8804  
[View Profile](#)

**ERIK HULBERT**  
 ehulbert@newmarkmw.com  
 direct 801.692.6886  
[View Profile](#)

DEVELOPED BY



FULL SERVICE  
 COMMERCIAL REAL ESTATE  
 312 East South Temple  
 Salt Lake City, Utah 84111  
 Office 801.456.8800  
[www.newmarkmw.com](http://www.newmarkmw.com)

**Single Family Permits**

- 🏠 2020 (283)
- 🏠 2021 (297)
- 🏠 2022 (137)
- 🏠 2023 (149)
- 🏠 2024 (176)

**Single Family Projects**

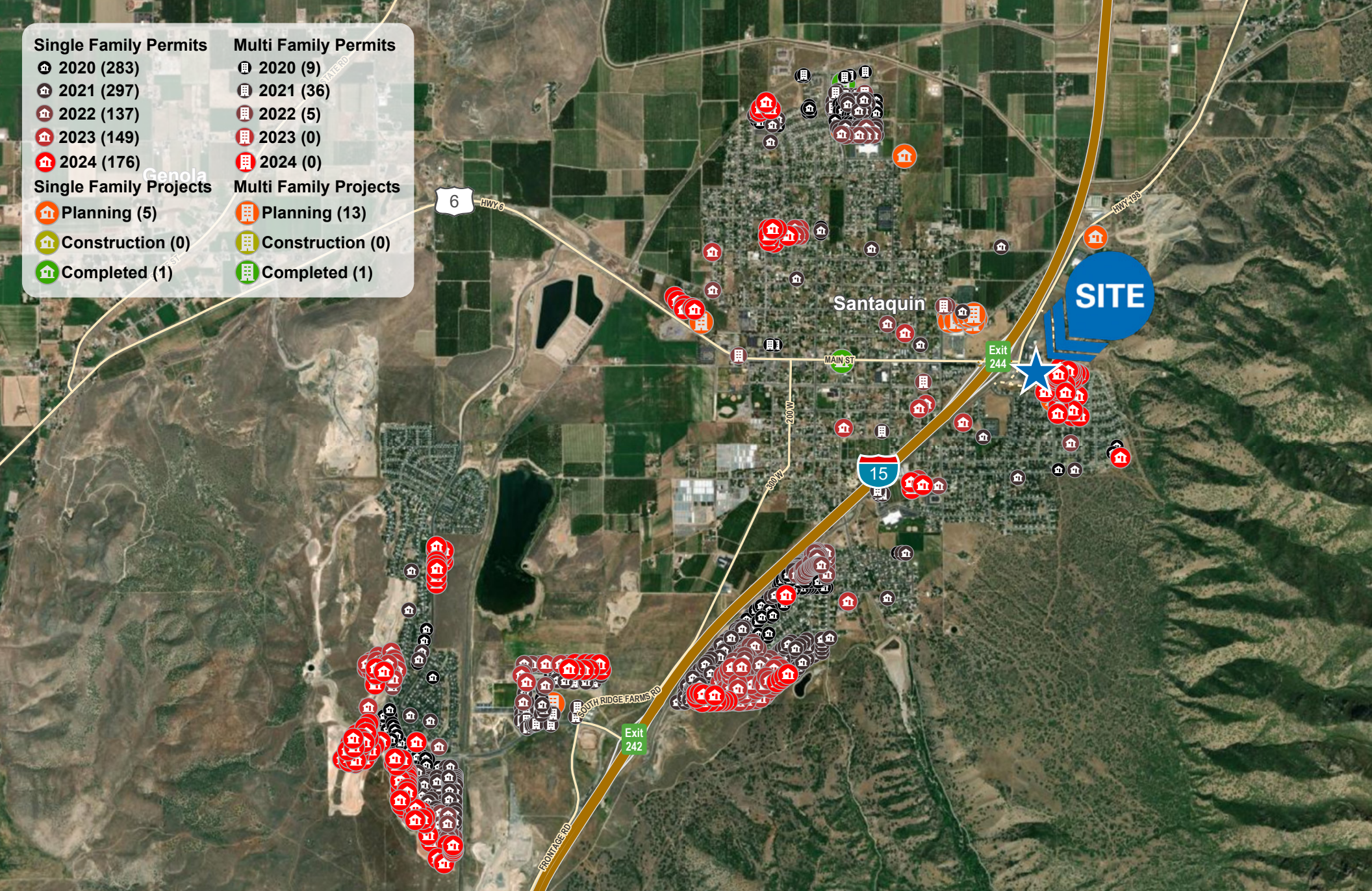
- 🏠 Planning (5)
- 🏠 Construction (0)
- 🏠 Completed (1)

**Multi Family Permits**

- 🏠 2020 (9)
- 🏠 2021 (36)
- 🏠 2022 (5)
- 🏠 2023 (0)
- 🏠 2024 (0)

**Multi Family Projects**

- 🏠 Planning (13)
- 🏠 Construction (0)
- 🏠 Completed (1)



**RYAN STEWART**  
 rstewart@newmarkmw.com  
 direct 801.578.5541  
[View Profile](#)

**SCOTT BRADY**  
 sbrady@newmarkmw.com  
 direct 801.456.8804  
[View Profile](#)

**ERIK HULBERT**  
 ehulbert@newmarkmw.com  
 direct 801.692.6886  
[View Profile](#)

DEVELOPED BY



**FULL SERVICE  
 COMMERCIAL REAL ESTATE**  
 312 East South Temple  
 Salt Lake City, Utah 84111  
 Office 801.456.8800  
[www.newmarkmw.com](http://www.newmarkmw.com)