

FOR LEASE

SPECULATIVE INDUSTRIAL BUILDING

DAVIAN DRIVE
MENOMONEE FALLS, WI 53051

FOUNDERS | **3**
REAL ESTATE SERVICES

Property Highlights

- Anticipated delivery by Q2 2025
- Precast concrete construction
- Single or multi-tenant occupancy
- Approximately 5 minutes from Interstate 41
- 7" non-reinforced concrete floors
- 32' clear height
- Customizable build-out to Tenant's use

Specifications

AVAILABLE SPACE	101,789 SF
LEASE RATE	Subject to Offer
Minimum Divisible	25,000 SF
Building Size	101,789 SF
Land Size	6.77 acres
Bay Size	53' x 50' typical; 60' speed bay
Parking	120 surface spots
Loading	Up to 20 docks
Sprinkler	ESFR
Power	2500 amps
Est. OPEX	\$2.25/SF
Tax Key	MNFV-0108-992-006

Contact

Bob Flood, SIOR
414.249.2300
bflood@founders3.com

Derek Yentz
414.249.2321
dyentz@founders3.com



414.271.1111 | www.founders3.com

Information shown herein was provided by Seller/Lessor and/or third parties and has not been verified by the broker unless otherwise indicated.

FOR LEASE

SPECULATIVE INDUSTRIAL BUILDING
DAVIAN DRIVE
MENOMONEE FALLS, WI 53051



PROPOSED SITE PLAN



414.271.1111 | wwwFOUNDERS3.com

Information shown herein was provided by Seller/Lessor and/or third parties and has not been verified by the broker unless otherwise indicated.

FOR LEASE

SPECULATIVE INDUSTRIAL BUILDING

DAVIAN DRIVE

MENOMONEE FALLS, WI 53051

FOUNDERS | **3**
REAL ESTATE SERVICES

CONSTRUCTION PHOTOS



414.271.1111 | www.founders3.com

Information shown herein was provided by Seller/Lessor and/or third parties and has not been verified by the broker unless otherwise indicated.

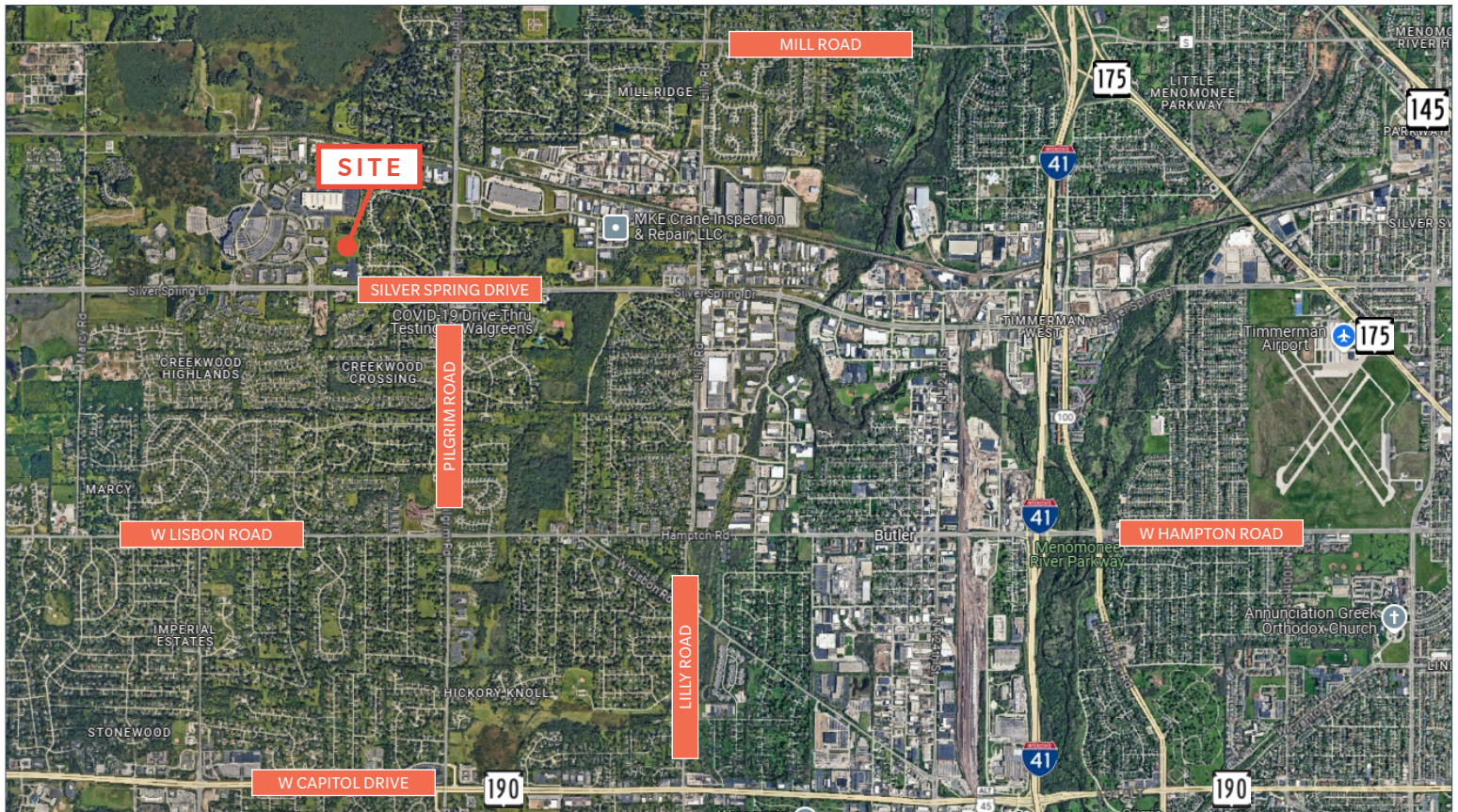
FOR LEASE

SPECULATIVE INDUSTRIAL BUILDING

DAVIAN DRIVE
MENOMONEE FALLS, WI 53051



LOCATION & DEMOGRAPHICS



Traffic Counts

Vehicles Per Day

Silver Spring	29,000 VPD
Lilly Road	9,902 VPD
Interstate 41	139,00 VPD
Pilgrim Road	15,600 VPD

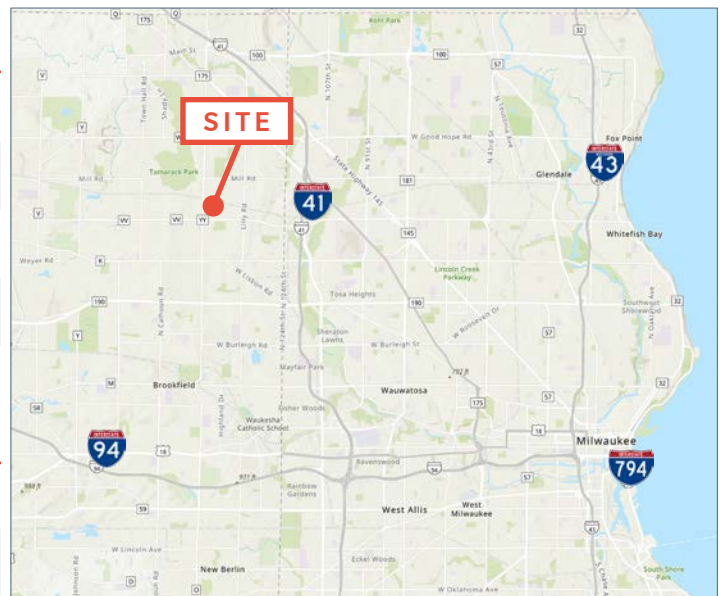
Demographics

1 MILE

3 MILE

5 MILE

Population	5,098	37,357	126,601
Avg HH Income	\$187,990	\$150,114	\$123,798



414.271.1111 | wwwFOUNDERS3.com

Information shown herein was provided by Seller/Lessor and/or third parties and has not been verified by the broker unless otherwise indicated.

STATE OF WISCONSIN BROKER DISCLOSURE

FOUNDERS | 3
REAL ESTATE SERVICES

Wisconsin law requires all real estate licensees to give the following information about brokerage services to prospective customers.

Prior to negotiating on your behalf the Brokerage firm, or an agent associated with the firm, must provide you the following disclosure statement.

Disclosure to Customers

You are a customer of the brokerage firm (hereinafter Firm). The Firm is either an agent of another party in the transaction or a subagent of another firm that is the agent of another party in the transaction. A broker or a salesperson acting on behalf of the Firm may provide brokerage services to you. Whenever the Firm is providing brokerage services to you, the Firm and its brokers and salespersons (hereinafter Agents) owe you, the customer, the following duties:

- The duty to provide brokerage services to you fairly and honestly.
- The duty to exercise reasonable skill and care in providing brokerage services to you.
- The duty to provide you with accurate information about market conditions within a reasonable time if you request it, unless disclosure of the information is prohibited by law.
- The duty to disclose to you in writing certain Material Adverse Facts about a property, unless disclosure of the information is prohibited by law.
- The duty to protect your confidentiality. Unless the law requires it, the Firm and its Agents will not disclose your confidential information or the confidential information of other parties.
- The duty to safeguard trust funds and other property held by the Firm or its Agents.
- The duty, when negotiating, to present contract proposals in an objective and unbiased manner and disclose the advantages and disadvantages of the proposals.

Please review this information carefully. An Agent of the Firm can answer your questions about brokerage services, but if you need legal advice, tax advice, or a professional home inspection, contact an attorney, tax advisor, or home inspector. This disclosure is required by section 452.135 of the Wisconsin statutes and is for information only. It is a plain-language summary of the duties owed to a customer under section 452.133(1) of the Wisconsin statutes.

Confidentiality Notice to Customers

The Firm and its Agents will keep confidential any information given to the Firm or its Agents in confidence, or any information obtained by the Firm and its Agents that a reasonable person would want to be kept confidential, unless the information must be disclosed by law or you authorize the Firm to disclose particular information. The Firm and its Agents shall continue to keep the information confidential after the Firm is no longer providing brokerage services to you.

No representation is made as to the legal validity of any provision or the adequacy of any provision in any specific transaction.

The following information is required to be disclosed by law:

1. Material Adverse Facts, as defined in section 452.01(5g) of the Wisconsin Statutes (see "Definition of Adverse Facts" below).
2. Any facts known by the Firm or its Agents that contradict any information included in a written inspection report on the property or real estate is the subject of the transaction.

To ensure that the Firm and its Agents are aware of what specific information you consider confidential, you may list that information below or provide that information to the Firm or its Agents by other means. At a later time, you may also provide the Firm or its Agents with other information you consider to be confidential.

CONFIDENTIAL INFORMATION

NON-CONFIDENTIAL INFORMATION

(the following information may be disclosed to the Firm and its Agents)

(Insert information you authorize to be disclosed, such as financial qualification information.)

Definition of Material Adverse Facts

A "Material Adverse Fact" is defined in Wis. Stat. 452.01(5g) as an Adverse Fact that a party indicates is of such significance, or that is generally recognized by a competent licensee as being of such significance to a reasonable party, that it affects or would affect the party's decision to enter into a contract or agreement concerning a transaction or affects or would affect the party's decision about the terms of such a contract or agreement.

An "Adverse Fact" is defined in Wis. Stat. 452.01(1e) as a condition or occurrence that a competent licensee generally recognizes will significantly and adversely affect the value of the property, significantly reduce the structural integrity of improvements to real estate, or present a significant health risk to occupants of the property; or information that indicates that a party to a transaction is not able to or does not intend to meet his or her obligations under a contract or agreement made concerning the transaction.

Notice About Sex Offender Registry

You may obtain information about the sex offender registry and persons registered with the registry by contacting the Wisconsin Department of Corrections on the Internet at <http://www.doc.wi.gov> or by telephone at 608-240-5830.

