

Stadium 
CROSSINGS

2125 East Katella Avenue
Anaheim, CA 92806

NEWMARK



A

Class

4

Stories

6,628

Total Vacant RSF

105,480

Rentable Building Area

4.5/1,000

Parking Ratio

2000/2020

Year Built/Renovated

Centrally located at the corner of State College Boulevard and East Katella Avenue in Anaheim's Platinum Triangle. Stadium Crossings has convenient access to all major freeways and a wide offering of on-site amenities.





HIGHLIGHTS

- Recently renovated
- Signage opportunities
- State-of-the-art design for high efficiency and flexible space planning
- Situated in a master planned office and retail environment
- High-speed communications ready, including fiber optic and co-axial cable
- Structure parking

PROMINENT LOCATION

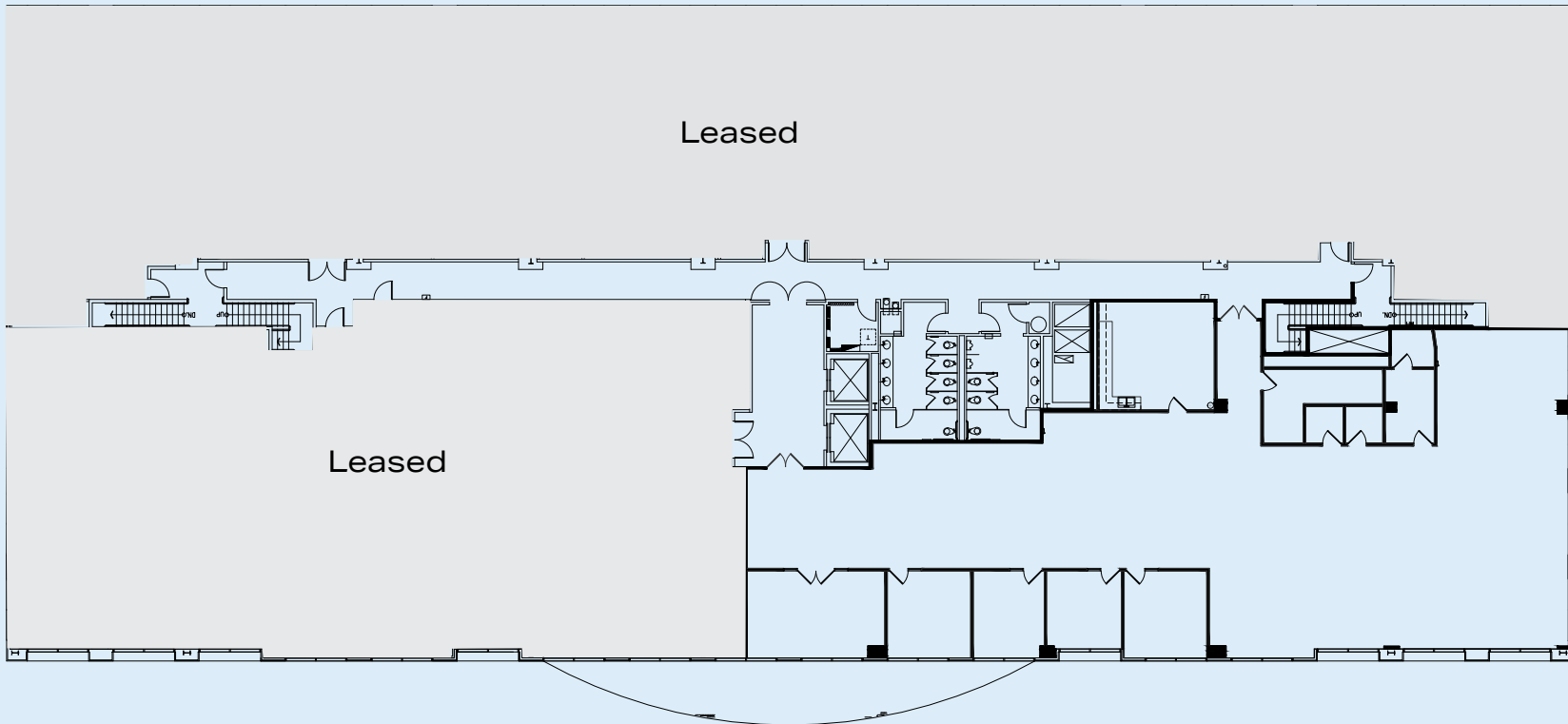
- Near Angel Stadium and Honda Center
- Two city blocks from the Orange Freeway (SR-57), providing easy access to all of Southern California via the Santa Ana (I-5), Garden Grove (SR-22) and Riverside (SR-91) Freeways
- Half mile from ARTIC providing access to the OCTA bus and Metrolink/Amtrak light rail transportation networks

WALKABLE AMENITIES

1. Baskin-Robbins
Chipotle
Panda Express
Starbucks
Togo's
2. Saddleback Church
3. Carl's Jr.
4. Marriott Towneplace Suites
5. Panera Bread
6. Denny's
7. Zov's Bistro
8. McDonald's
9. Flame Broiler
The Catch



Suite 220 | 6,628 RSF | Available June 1, 2022



Remodeled
lobbies,
elevators,
common area
corridors and
restrooms



CONTACTS

JAY NUGENT

Executive Managing Director
CA RE Lic. #01248267
t 949-608-2035
jay.nugent@nmrk.com

GEORGE THOMSON

Executive Managing Director
CA RE Lic. #00947200
t 949-608-2037
george.thomson@nmrk.com

RAYLEE OVERTON

Transaction Manager
CA RE Lic. #02082860
t 949-608-2012
raylee.overton@nmrk.com



2125 EAST KATELLA AVENUE, ANAHEIM, CA 92806

The distributor of this communication is performing acts for which a real estate license is required. The information contained herein has been obtained from sources deemed reliable but has not been verified and no guarantee, warranty or representation, either express or implied, is made with respect to such information. Terms of sale or lease and availability are subject to change or withdrawal without notice.

Corporate License #01355491

NEWMARK