

Retail Space for Lease

5800 W 44TH AVENUE, WHEAT RIDGE, CO 80212



[Explore Virtual Tour](#)

Overview

Hoff & Leigh is excited to present this desirable 2nd generation liquor store at 5800 W 44th Avenue at the signalized intersection of 44th Avenue & Fenton. Formerly Lakeside Liquor, this liquor store has a full buildout and transferrable liquor license. Liquor store business is for sale for \$150,000 + inventory (~\$158,000 inventory), this does NOT include the real estate. Long term lease signed for the retail unit.

The liquor store has a full build out with a large 11-door walk-in convenience store refrigerator, 3 large double-door refrigerators, counter/checkout area with register, shelving throughout, wine racks, storage area with wash sink, and other miscellaneous business items. The property has 14 parking spaces and 2 double-sided pylon signs for the liquor store. Come take advantage of this great opportunity to open your liquor store.

5800 W 44th (Lakeside Liquor): 1,050 SF x \$27.00 SF/YR (+ \$5.23 SF/YR NNN) = **\$2,820 / Month**.

Hoff & Leigh property listing website: <https://www.hoffleigh.com/listing/5800-w-44th-avenue/>

For more info, please text/call Michael Crawford: (720) 683-0399. MCrawford@HoffLeigh.com

Unit:	Size:	Lease Rate:
5800	1,050 SF	\$27.00 SF/YR (+ \$5.23 SF/YR NNN) = \$2,820 / Month

Highlights

- Business For Sale: \$150,000 + Inventory
- Fully Built Out Liquor Store
- Liquor License Transferrable
- 2 Pylon Signs for Liquor Store
- 1 Bathroom
- Ample On-site Parking (14 Spaces)
- Signalized Intersection at Fenton & 44th

Property Details

	Lease Rate \$27.00 SF/YR (NNN)		Building Size 3,144 SF
	Space Available 1,050 SF		Zoning C-1
	Lot Size 0.65 Acres		

Rev: May 16, 2024



Our Network Is Your Edge

All information is from sources deemed reliable and is subject to errors, omissions, change of price, rental, prior sale, and withdrawal without notice. Prospect should carefully verify each item of information contained herein.

Michael Crawford

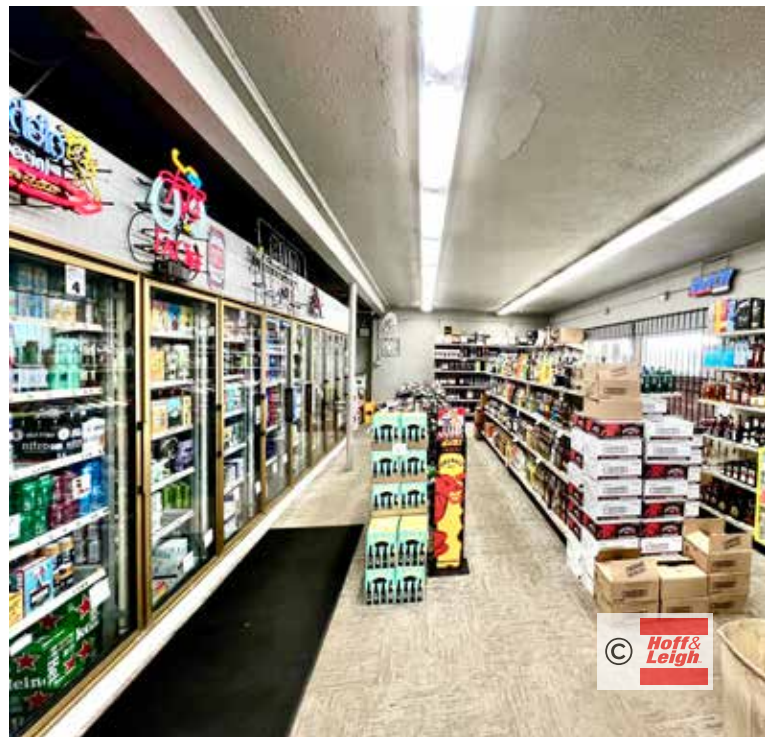
C: 720.683.0399

O: 720.572.5187

MCrawford@HoffLeigh.com

Retail Space for Lease

5800 W 44TH AVENUE, WHEAT RIDGE, CO 80212



Rev: May 16, 2024

Our Network Is Your Edge



All information is from sources deemed reliable and is subject to errors, omissions, change of price, rental, prior sale, and withdrawal without notice. Prospect should carefully verify each item of information contained herein.

Michael Crawford

C: 720.683.0399

O: 720.572.5187

MCrawford@HoffLeigh.com



Retail Space for Lease

5800 W 44TH AVENUE, WHEAT RIDGE, CO 80212



Rev: May 16, 2024



Our Network Is Your Edge

All information is from sources deemed reliable and is subject to errors, omissions, change of price, rental, prior sale, and withdrawal without notice. Prospect should carefully verify each item of information contained herein.

Michael Crawford

C: 720.683.0399

O: 720.572.5187

MCrawford@HoffLeigh.com

Retail Space for Lease

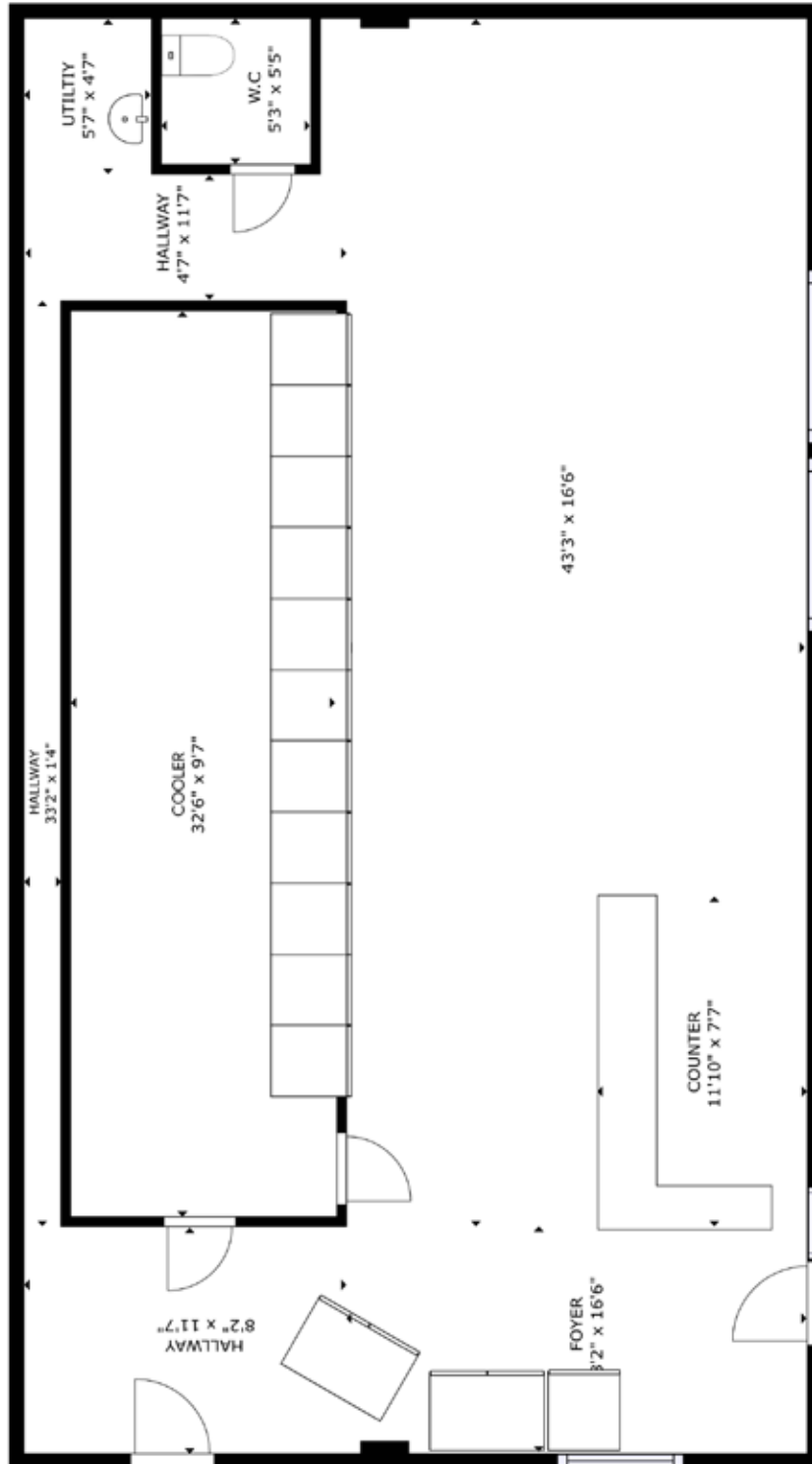
5800 W 44TH AVENUE, WHEAT RIDGE, CO 80212



Rev: May 16, 2024

Retail Space for Lease

5800 W 44TH AVENUE, WHEAT RIDGE, CO 80212



Rev: May 16, 2024

Our Network Is Your Edge



All information is from sources deemed reliable and is subject to errors, omissions, change of price, rental, prior sale, and withdrawal without notice. Prospect should carefully verify each item of information contained herein.

Michael Crawford

C: 720.683.0399

O: 720.572.5187

MCrawford@HoffLeigh.com

Retail Space for Lease

5800 W 44TH AVENUE, WHEAT RIDGE, CO 80212

5800 W 44th Ave, Wheat Ridge, Colorado, 80212

DEMOGRAPHICS



154,482
Population



39.0
Median Age



2.1
Average Household Size



\$82,549
Median Household Income

TRAFFIC COUNT

Cross street	VPD	Distance
W 39th Ave	8,148	0.1
W 44th Ave	10,930	0.1
Ingalls St	12,682	0.2
Ingalls St	13,470	0.2



Rev: May 16, 2024



Retail Space for Lease

5800 W 44TH AVENUE, WHEAT RIDGE, CO 80212



Rev: May 16, 2024



Our Network Is Your Edge

All information is from sources deemed reliable and is subject to errors, omissions, change of price, rental, prior sale, and withdrawal without notice. Prospect should carefully verify each item of information contained herein.

Michael Crawford

C: 720.683.0399

O: 720.572.5187

MCrawford@HoffLeigh.com