

1402 West Lake Street

Minneapolis, MN 55408

FOR SALE



Historic building with a prime investment or redevelopment opportunity in the heart of Uptown. This versatile property offers spaces suitable for a variety of commercial users. Featuring one of the best rooftops in the Twin Cities, this is your chance to own a piece of Minneapolis history. Contact us today for more information and to schedule a viewing.

Jeff Houg

D: 952-300-9545

M: 612-889-2242

jhoug@shcre.com

www.shcre.com



- Available Immediately
- Building Size - 16,937 RSF
- Commercial Kitchen Capability
- 4 Floors
- 2024 Taxes - \$96,288

1402 West Lake Street

Minneapolis, MN 55408

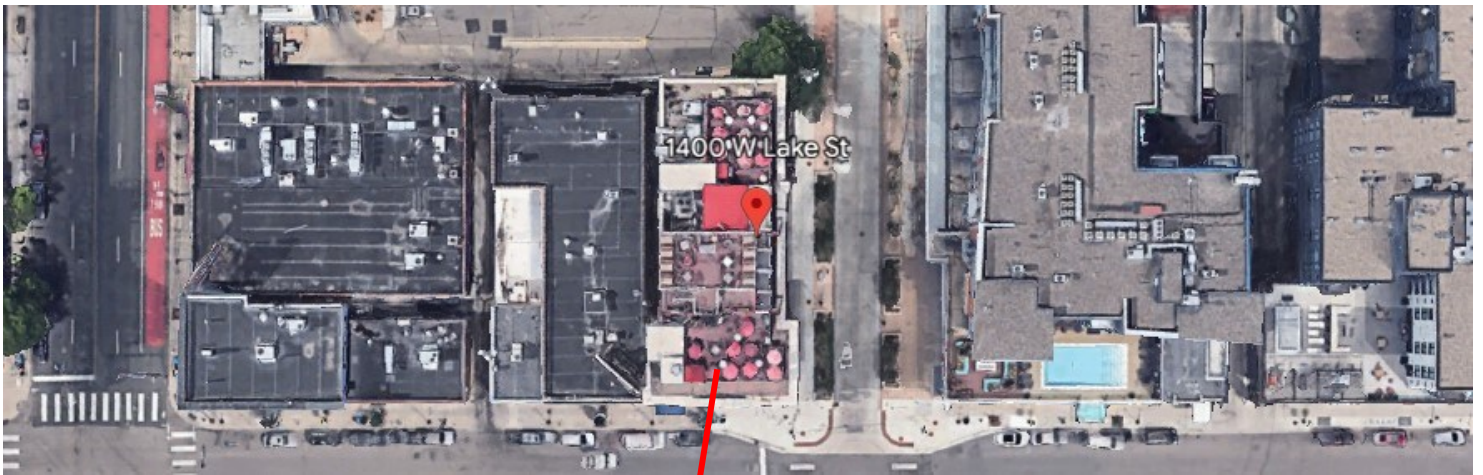
Jeff Houg

D: 952-300-9545

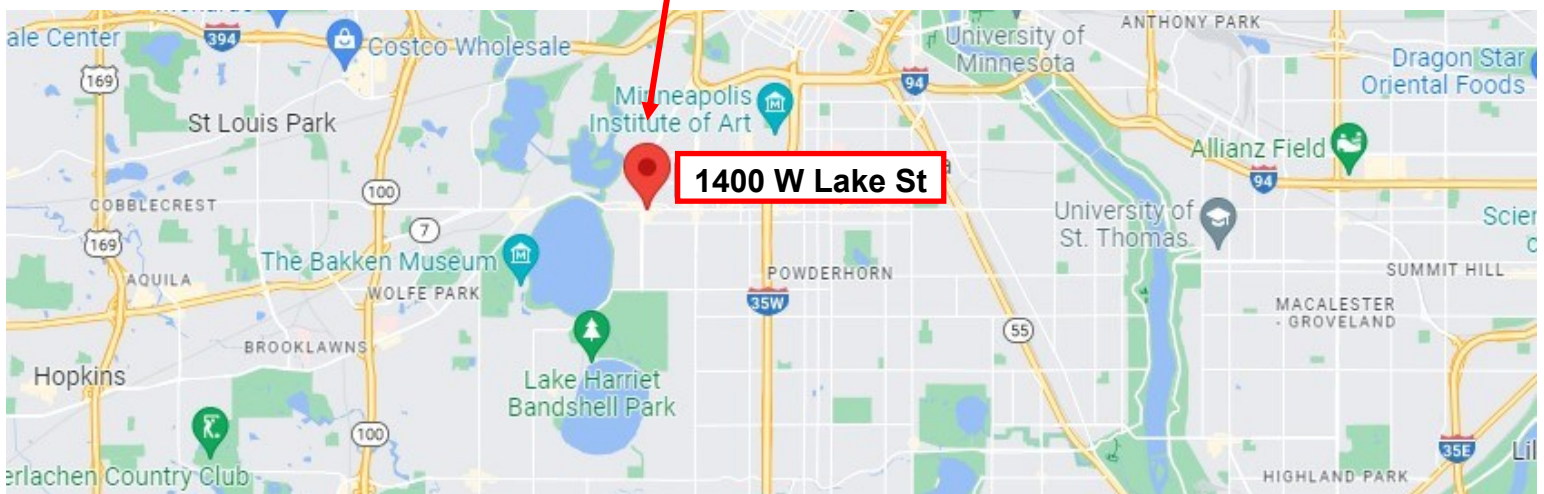
M: 612-889-2242

jhoug@shcre.com

www.shcre.com



- Convenient access to interstates 94, 394 and 35W
- Highly walkable to the Bde Maka Ska trails and Chain of Lakes parks
- Variety of transportation options



1402 West Lake Street

Minneapolis, MN 55408

Jeff Houg

D: 952-300-9545

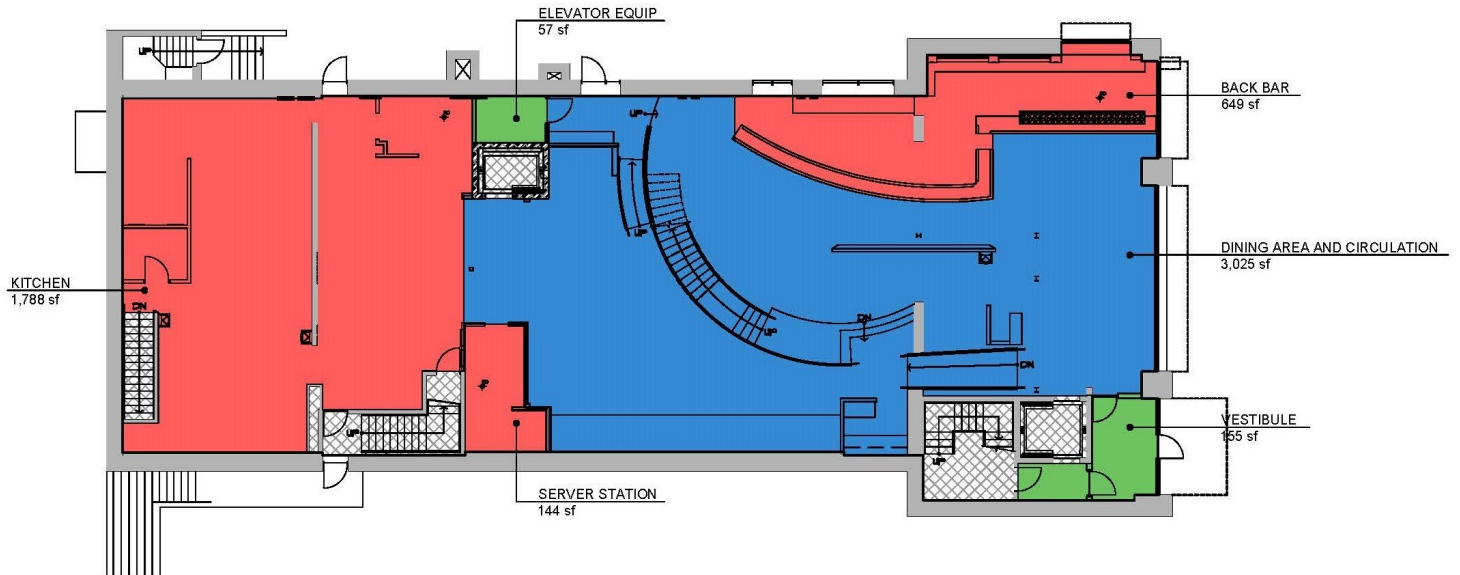
M: 612-889-2242

jhoug@shcre.com

www.shcre.com



First Floor 5,818 RSF

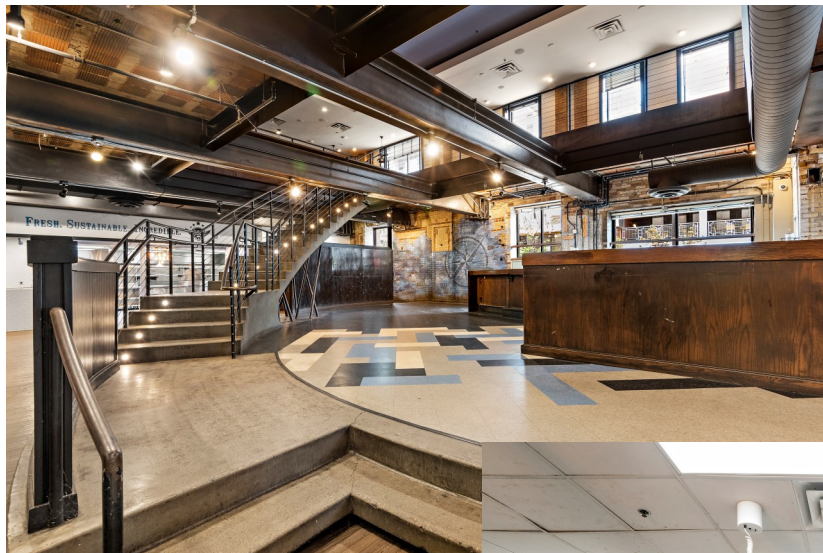


FIRST FLOOR



5,818 sf USEABLE FLOOR AREA

CODE REVIEW INCLUDING OCCUPANT LOAD AND EXITING REQUIREMENTS IS REQUIRED FOR ALL PROPOSED FURNITURE LAYOUTS AND ROOM USES.



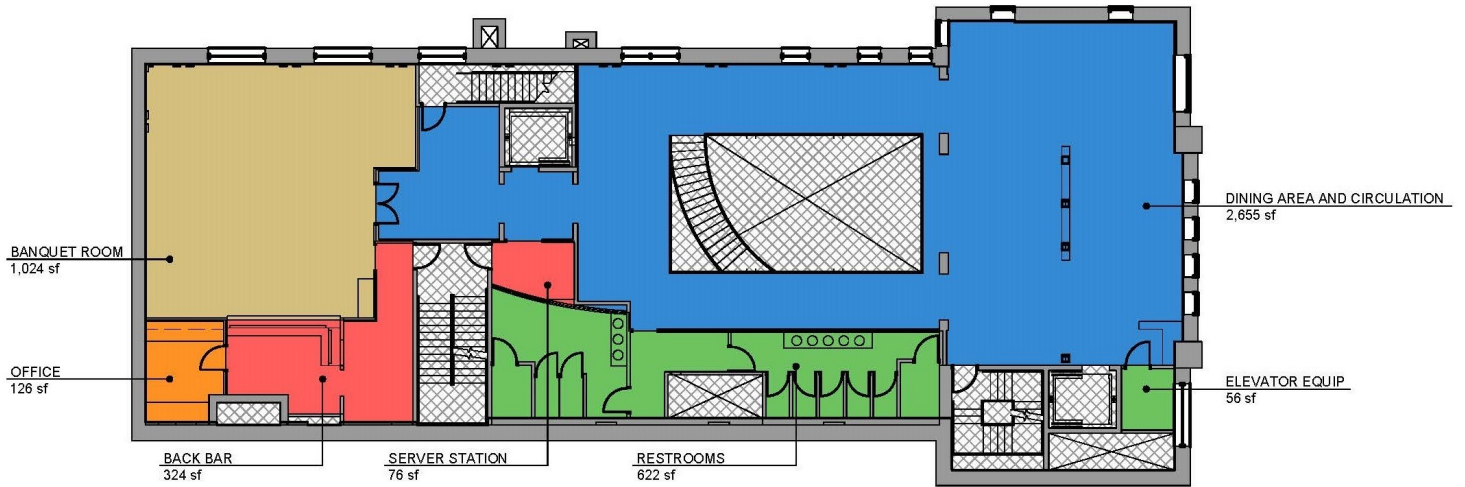
1402 West Lake Street

Minneapolis, MN 55408

Jeff Houg
D: 952-300-9545
M: 612-889-2242
jhoug@shcre.com
www.shcre.com



Second Floor 4,883 RSF



SECOND FLOOR



4,883 sf USEABLE FLOOR AREA

CODE REVIEW INCLUDING OCCUPANT LOAD AND EXISTING REQUIREMENTS IS REQUIRED FOR ALL PROPOSED FURNITURE LAYOUTS AND ROOM USES.

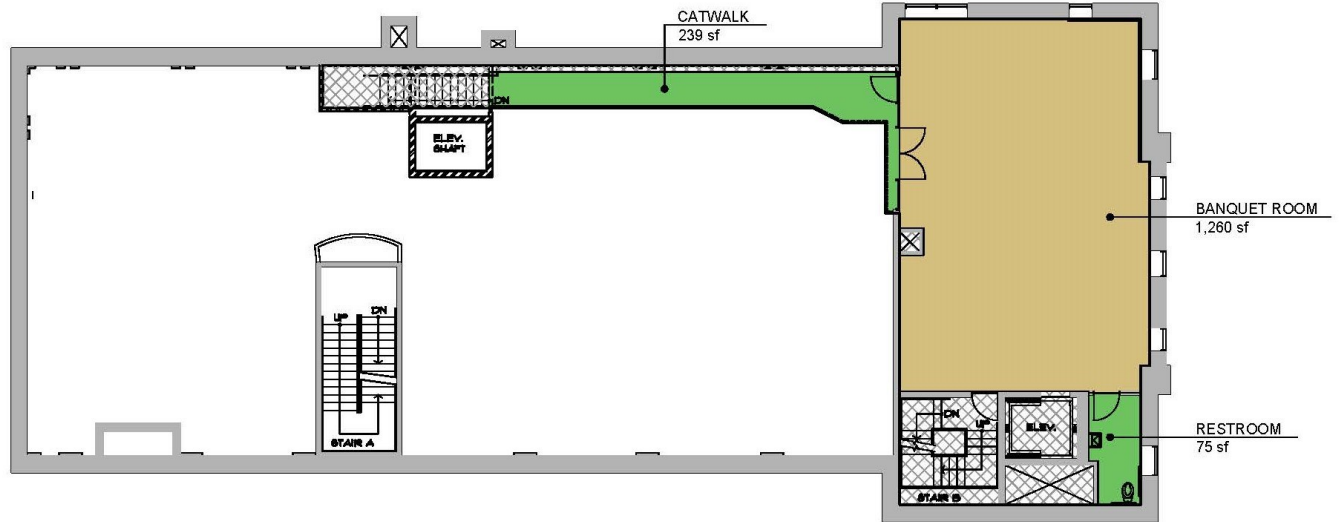


1402 West Lake Street
Minneapolis, MN 55408

Jeff Houg
D: 952-300-9545
M: 612-889-2242
jhoug@shcre.com
www.shcre.com



Third Floor / Mezzanine - 1,574 RSF



CODE REVIEW INCLUDING OCCUPANT LOAD AND EXITING REQUIREMENTS IS REQUIRED FOR ALL PROPOSED FURNITURE LAYOUTS AND ROOM USES.



1402 West Lake Street

Minneapolis, MN 55408

Jeff Houg

D: 952-300-9545

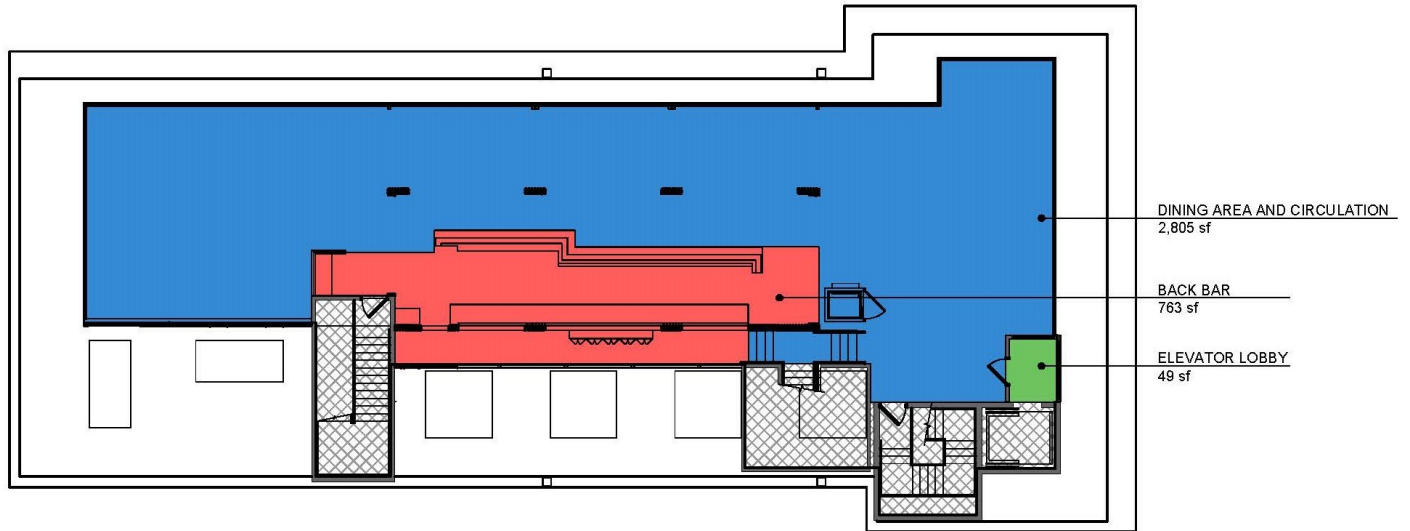
M: 612-889-2242

jhoug@shcre.com

www.shcre.com



Roof Top 3,617 RSF



ROOF DECK



3,617 sf USEABLE FLOOR AREA

CODE REVIEW INCLUDING OCCUPANT LOAD AND EXITING REQUIREMENTS IS REQUIRED FOR ALL PROPOSED FURNITURE LAYOUTS AND ROOM USES.



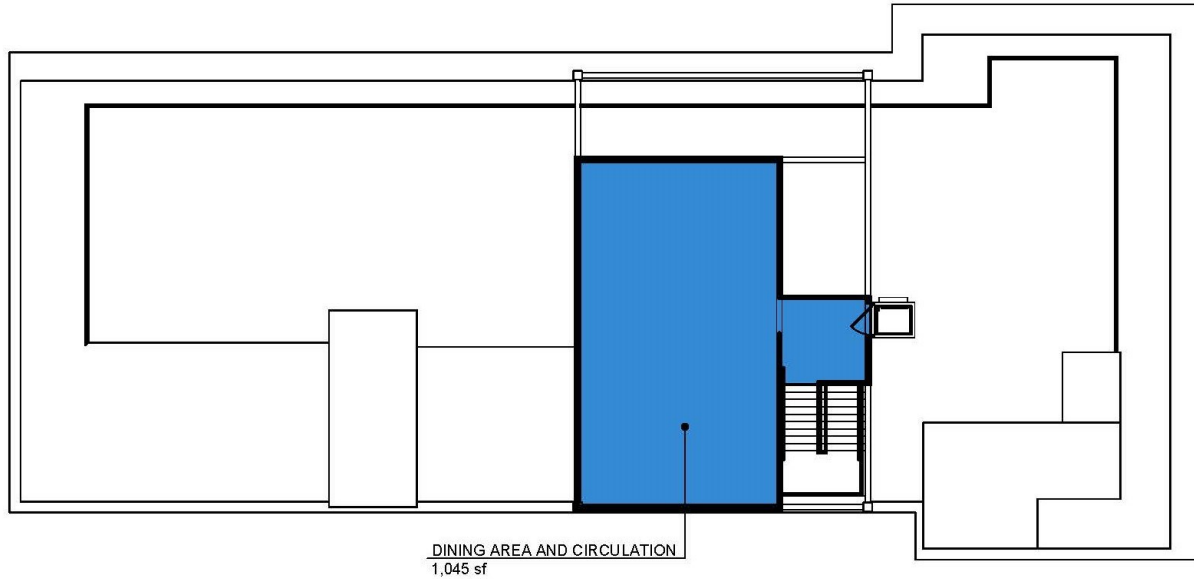
1402 West Lake Street

Minneapolis, MN 55408

Jeff Houg
D: 952-300-9545
M: 612-889-2242
jhough@shcre.com
www.shcre.com



Sky Deck 1,045 RSF



SKY DECK



1,045 sf USEABLE FLOOR AREA

CODE REVIEW INCLUDING OCCUPANT LOAD AND EXITING REQUIREMENTS IS REQUIRED FOR ALL PROPOSED FURNITURE LAYOUTS AND ROOM USES.

