

# HILLSIDE LOGISTICS CENTER

## 295,393 SQ. FT. AVAILABLE

5999 Butterfield Road – Hillside, IL

Contact:



**Charles Canale**  
Senior Vice President  
+1 847 698 8211  
[charles.canale@colliers.com](mailto:charles.canale@colliers.com)



- **Awesome Visibility & Signage Opportunity**
- **Visible from I-294, I-88, and I-290**
- **±400,000 Cars Per Day Pass the Property**

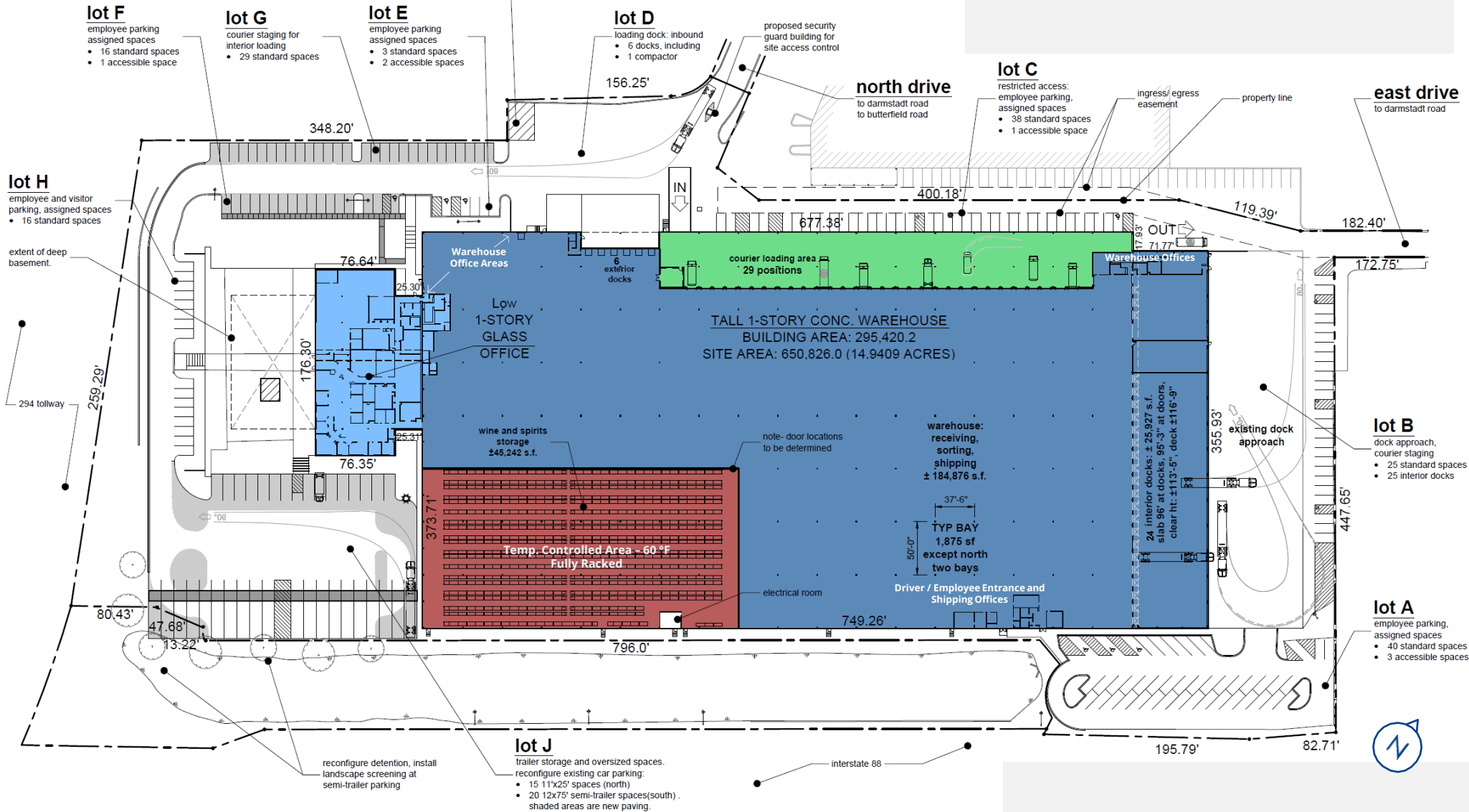
### Property Specifications

Building Size	295,393 SF (divisible)	Heat	Rooftop-mounted gas makeup-air units	Parking	±190 car parking spaces ±25 secure trailer stalls
Main Office Area	16,675 SF	Power	3,000A @ 480V	Lighting	T5 Fluorescent
Clear Height	<b>27' 6"</b>	Loading	24 interior docks 6 exterior docks   3 DIDs	Location	Close Proximity to I-290, I-294, and I-88
Column Spacing	50' x 37.5'	Sprinklers	<b>ESFR</b>	Temp. Controlled Area	45,000 SF @ 60° F Fully-racked area
Occupancy	<b>Immediate</b>	Sublease	Through 4/30/2032	Lease Rate	<b>\$6.50 PSF Gross</b>

[www.HillsideLogisticsCenter.com](http://www.HillsideLogisticsCenter.com)

# Site Plan

- ESFR sprinkler system
- Immediate occupancy
- 27.5' Clear height
- 30 Loading docks (24 interior / 6 exterior)
- Excellent distribution/fulfillment building - interior courier/van loading area with 29 van loading positions (area is removable if not required)

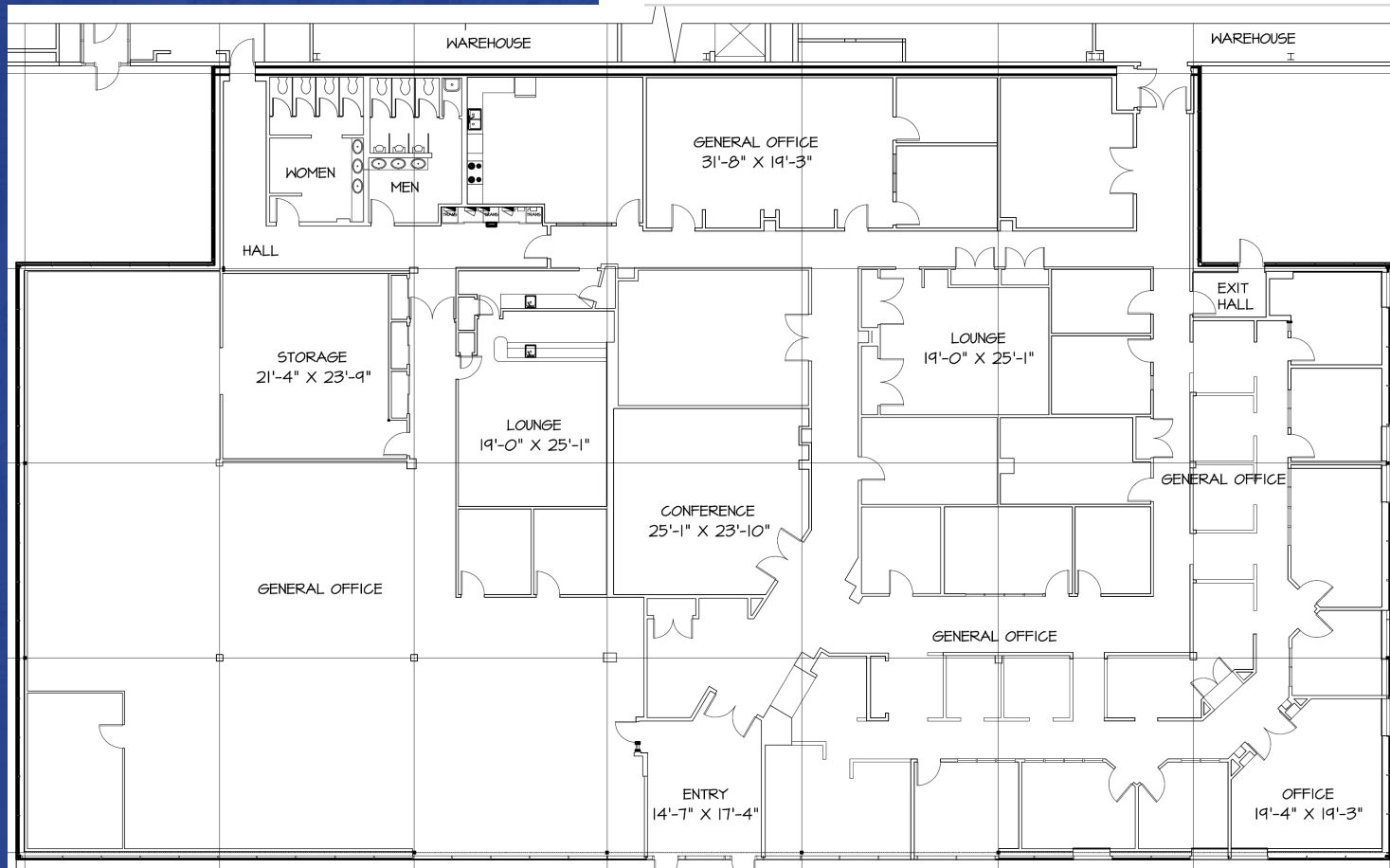


**HILLSIDE LOGISTICS CENTER**  
 295,393 Sq. Ft. Available  
 5999 Butterfield Road  
 Hillside, Illinois

- Very bright interior with high-output lighting
- Floor drains in place
- Awesome visibility & signage opportunity - viewed by ±400,000 cars per day
- Close proximity to 3 interstates - I-290, I-294, and I-88 | Easy access to CBD
- Property video at [www.HillsideLogisticsCenter.com](http://www.HillsideLogisticsCenter.com)

# Office Plan

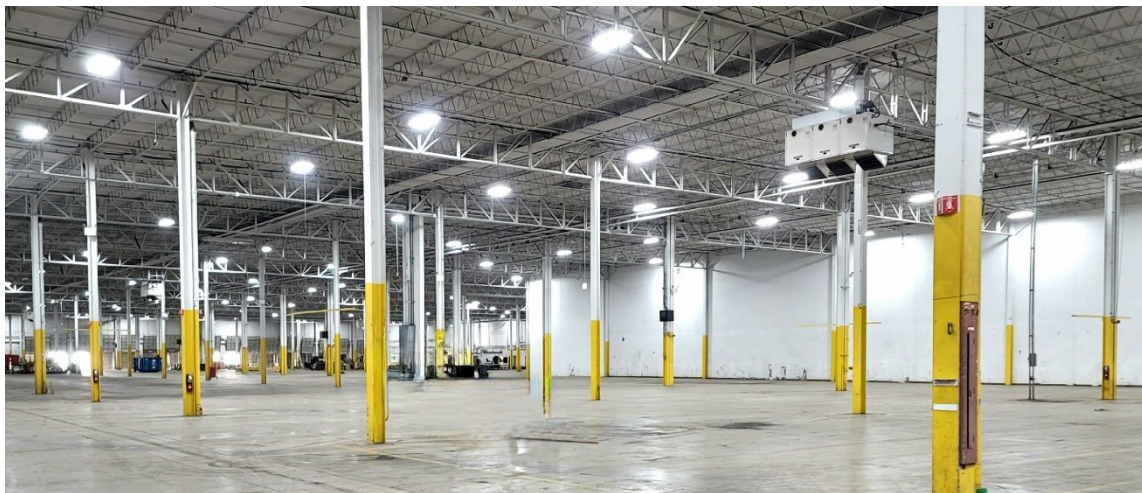
- 16,675 SF of dedicated main office area
- Full glass front with high-image appearance - fully furnished



- Employee entrance with shipping office, driver's waiting area, and restrooms located in warehouse
- Additional shipping offices and restrooms are positioned throughout warehouse area



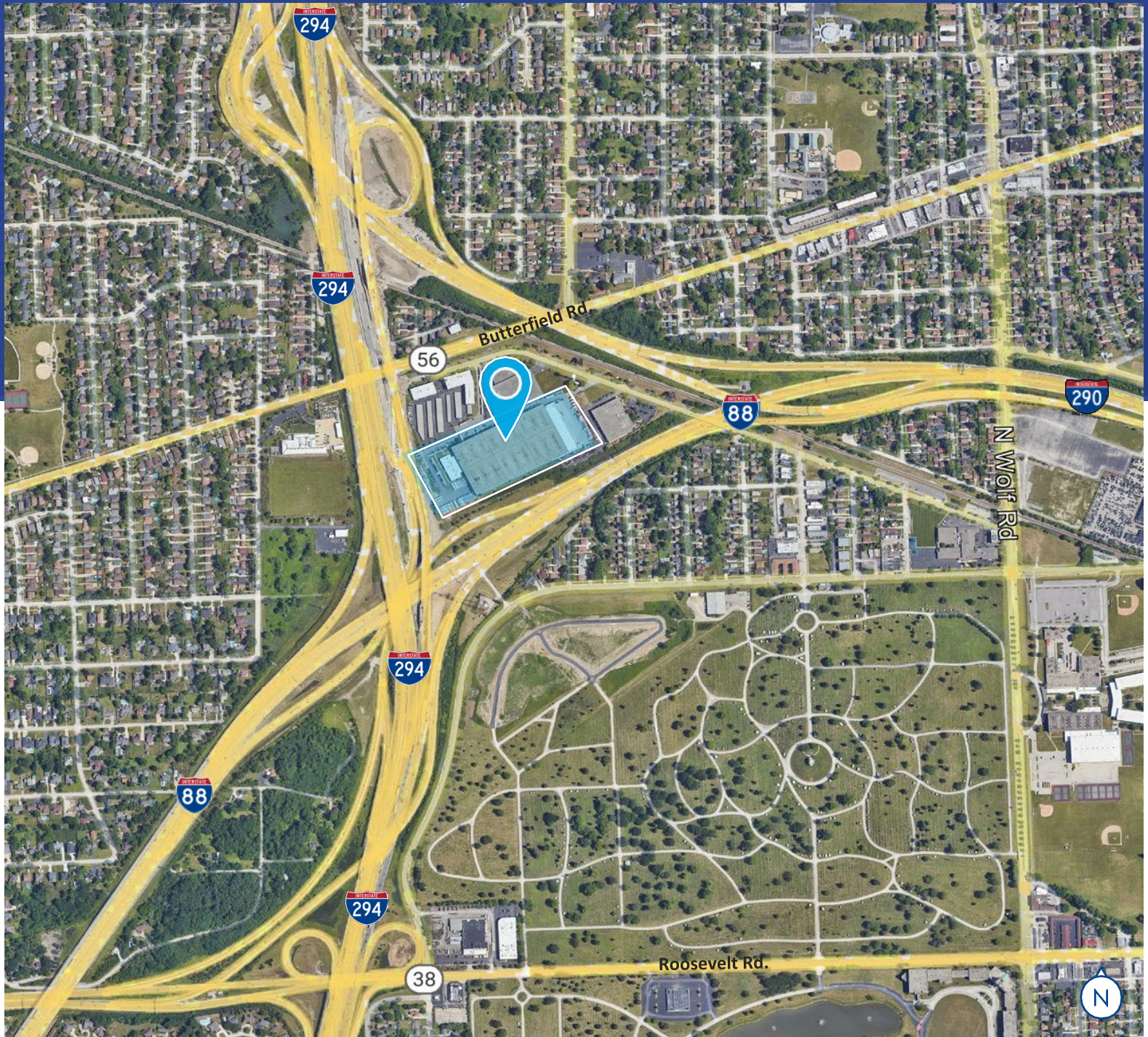
# Warehouse Photos



- Very bright warehouse interior with high-output lighting throughout
- All interior walls and ceilings are painted white
- Separate warehouse employee entrance
- Driver's waiting area with restrooms
- Warehouse offices and restrooms are positioned throughout the facility

# Aerial & Interstate Map

- Awesome visibility & signage opportunity!
- ±400,000 cars per day pass the property
- Visible from 3 interstates – I-290, I-294, and I-88
- Close to all major suburbs and Chicago Central Business District



**Hillside Logistics Center | 5999 Butterfield Road – Hillside, IL**

# HILLSIDE LOGISTICS CENTER 295,393 SQ. FT. AVAILABLE

5999 Butterfield Road – Hillside, IL

[www.HillsideLogisticsCenter.com](http://www.HillsideLogisticsCenter.com)

Exclusive Leasing Agent:



**Charles Canale**

Senior Vice President

+1 847 698 8211

[charles.canale@colliers.com](mailto:charles.canale@colliers.com)

---

COLLIERS INTERNATIONAL | CHICAGO

6250 N. River Road Suite 11-100

Rosemont, IL 60018

[colliers.com](http://colliers.com)

Copyright © 2023 Colliers International. Information herein has been obtained from sources deemed reliable, however its accuracy cannot be guaranteed. The user is required to conduct their own due diligence and verification.

