



# Retail that resonates



NewMark Merrill  
COMPANIES



## Del Amo Plaza

Located on the northeast corner of Del Amo Boulevard & Pioneer Boulevard  
Cerritos, CA • [www.newmarkmerrill.com](http://www.newmarkmerrill.com)





# Prime Retail Space Available

on the NE corner of Del Amo Blvd. & Pioneer Blvd.

Conveniently located east of the I-605 (San Gabriel) Freeway and within close proximity to the 91 Freeway, Del Amo Plaza sits at a high profile signalized intersection in Cerritos. A high school, elementary school, and adult educational center are all within minutes of the center, which provides ample parking with 272 spaces, many of which are storefront.



**221,186**  
POPULATION  
IN 3-MILE RADIUS\*



**\$147,510**  
AVERAGE HH INCOME  
IN 3-MILE RADIUS\*



Cars Per Day

**12,804**  
PIONEER BLVD.  
**29,785**  
DEL AMO BLVD.

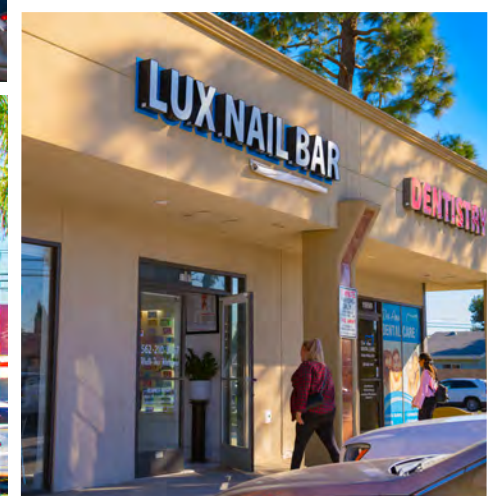


**1,427,704**  
ANNUAL VISITS



**58,126**  
SF OF RETAIL SPACE

\*Estimates are based on 2024 demographics for population and average income per household. The information contained herein is not guaranteed and should be independently verified.





# Del Amo Plaza

PIONEER BLVD.



DEL AMO BLVD.

#	TENANTS	SF
11803	Caesars Mongolian BBQ	3,600
11809	Independent Artists Academy	1,518
11813	Mish Esthetics	1,250
11815	Hair Craze	650
11817	AVAILABLE	750
11819	Boulevard Cleaners	1,000
11821	CW Acupuncture	1,000
11823	CA Medical Weight Loss	850
11825	Temps Inc	1,500
11827	Lendmark Financial Services	1,179
11855/59	Dollar Tree	9,350
11877	Farmers Insurance	490
11879	Skin by Jenny	630
11881	Crunch Fitness	23,205
11883	Cerritos Tailor	385
11889	Kumon Math Cerritos	1,172
11891	Flame Broiler - Rice Bowl	1,518
11893/5	Caribbean Juice Bar	1,923
11897	Luxury Nails Bar	855
11899	Del Amo Dental Care (Dr. Hyun)	1,068
20224	China Wok Inn	1,738
20226	7 Leaves Cafe	1,495

## When you love shopping centers, it shows.

24025 Park Sorrento, Ste. 300 • Calabasas, CA 91302 • 818.710.6100 • [www.newmarkmerrill.com](http://www.newmarkmerrill.com)

For Leasing Information  
please contact:

Grant Gomer  
 Leasing Associate  
 Tel: 818.710.6100 x4603  
[gomer@newmarkmerrill.com](mailto:gomer@newmarkmerrill.com)  
 DRE LIC# 02056042

Greg Giacopuzzi  
 VP of Leasing & Development  
 Tel: 818.710.6100 x5798  
[ggiacopuzzi@newmarkmerrill.com](mailto:ggiacopuzzi@newmarkmerrill.com)  
 DRE LIC# 01906640



NewMark Merrill  
COMPANIES

NOTE: This information is conceptual in nature and is subject to adjustments pending verification and Client, Tenant, and Government Agency approvals. No warranties or guaranties of any kind are given or implied by the Architect or Owner.