



Building Highlights

- 8,000 sf available for lease
- 14' clear height
- 5 car park spaces
- One (1) drive-in door
- 400 amps power
- Lease rate: \$10.00/sf gross



Central location



Ample labor



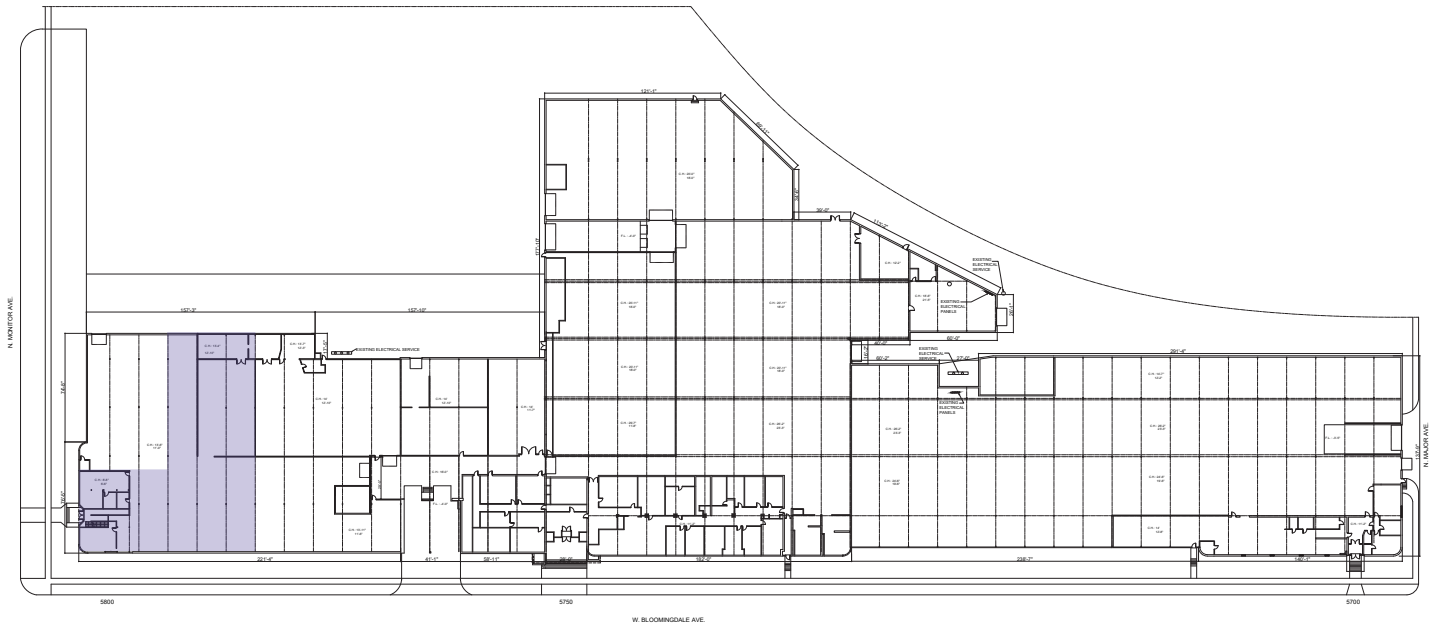
Rare availability

For more information

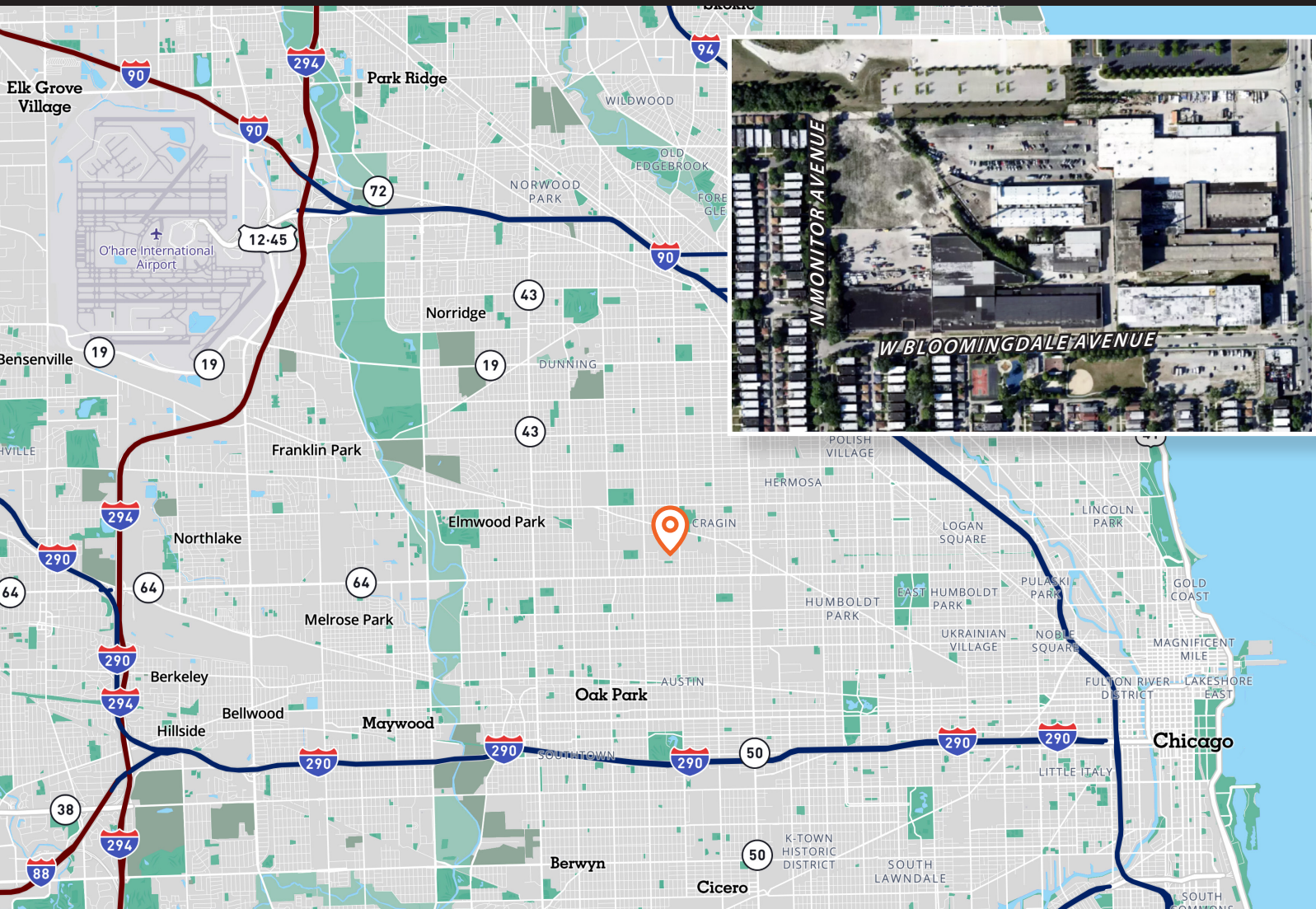
Steven A. Kohn, SIOR
Principal
steven.kohn@avisonyoung.com
D +1 847 849 1912
M +1 847 341 6048

8,000 sf

Available for Lease
1815 N. Monitor Avenue
Chicago, IL 60639



MAP



For more information, please contact:

Steven A. Kohn, SIOR
Principal
steven.kohn@avisonyoung.com
D: +1 847 849 1912
M: +1 847 341 6048

avisonyoung.com

© 2025 Avison Young - Chicago, LLC.

Information contained herein was obtained from sources deemed reliable and, while thought to be correct, have not been verified. Avison Young does not guarantee the accuracy or completeness of the information presented, nor assumes any responsibility or liability for any errors or omissions therein.

**AVISON
YOUNG**