

Available Medical Office Space for Lease

# Centre Medical Plaza

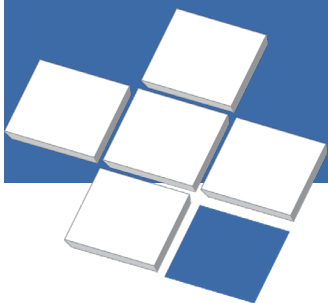
855-865 Third Avenue, Chula Vista, CA 91911



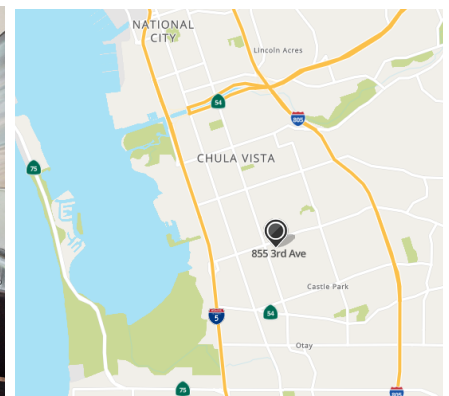
For Leasing Information:

Lael Crompton  
Senior Director of Leasing  
Phone: 858-794-1900  
lcrompton@pmbres.com  
www.pmbres.com  
CA Lic. 01871298

- 855 Building: 44,977 SF, 4-story, class A medical office building
- 865 Building: 29,917 SF, single story, medical office building
- Close proximity to Scripps Mercy Chula Vista (1.5 miles) and Sharp Chula Vista Medical Center (3.5 miles)
- Major tenants and in place referral patterns; ProSciento, Rady Children's, San Ysidro Health
- Conveniently located between Interstate 5 & 805
- Ample parking within 4-Story covered garage

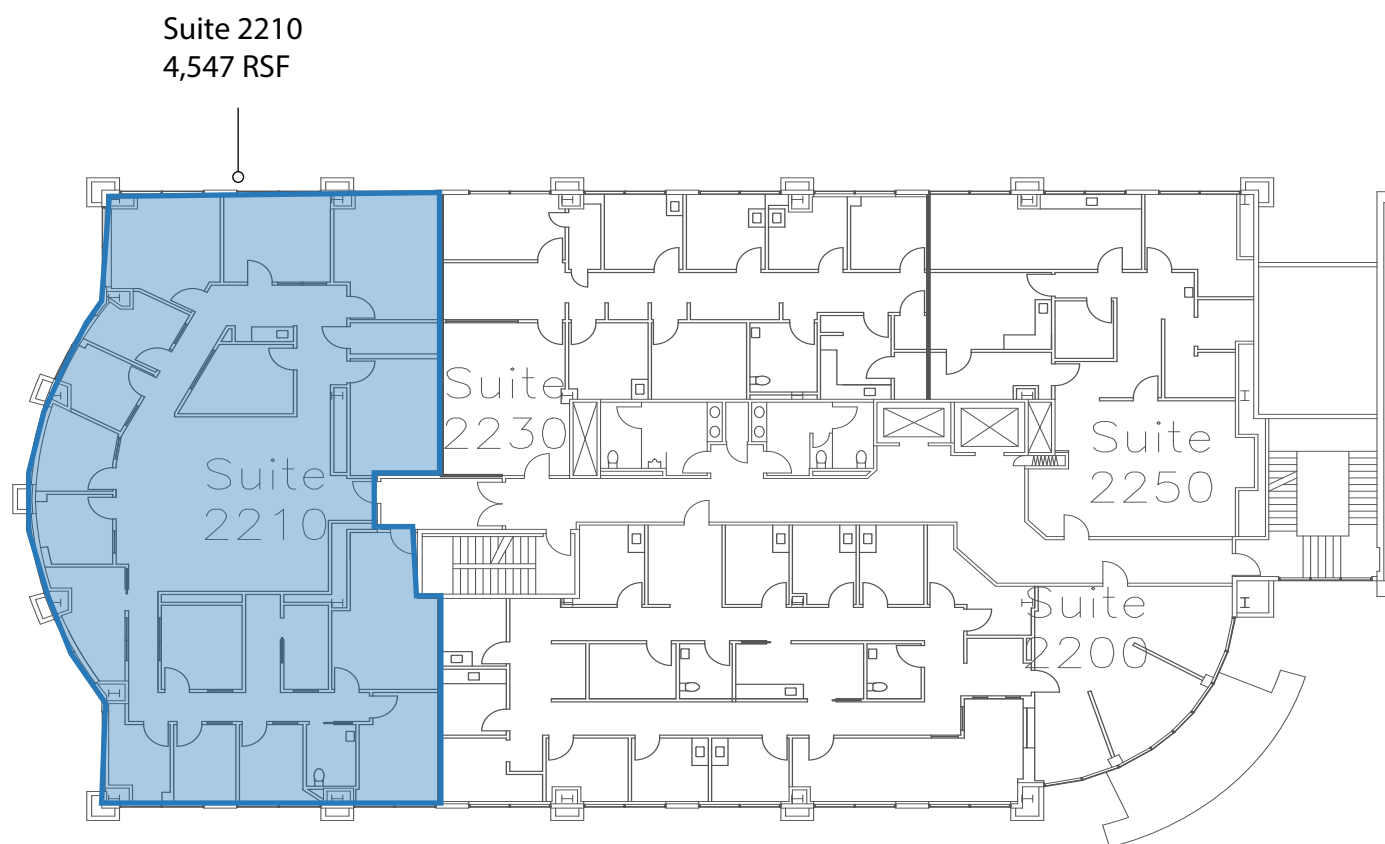


**PMB**  
Real Estate Services  
*Real Estate Management Solutions for Healthcare*



# 855 Third Avenue

## 2nd Floor Availabilities



### For Leasing Information:

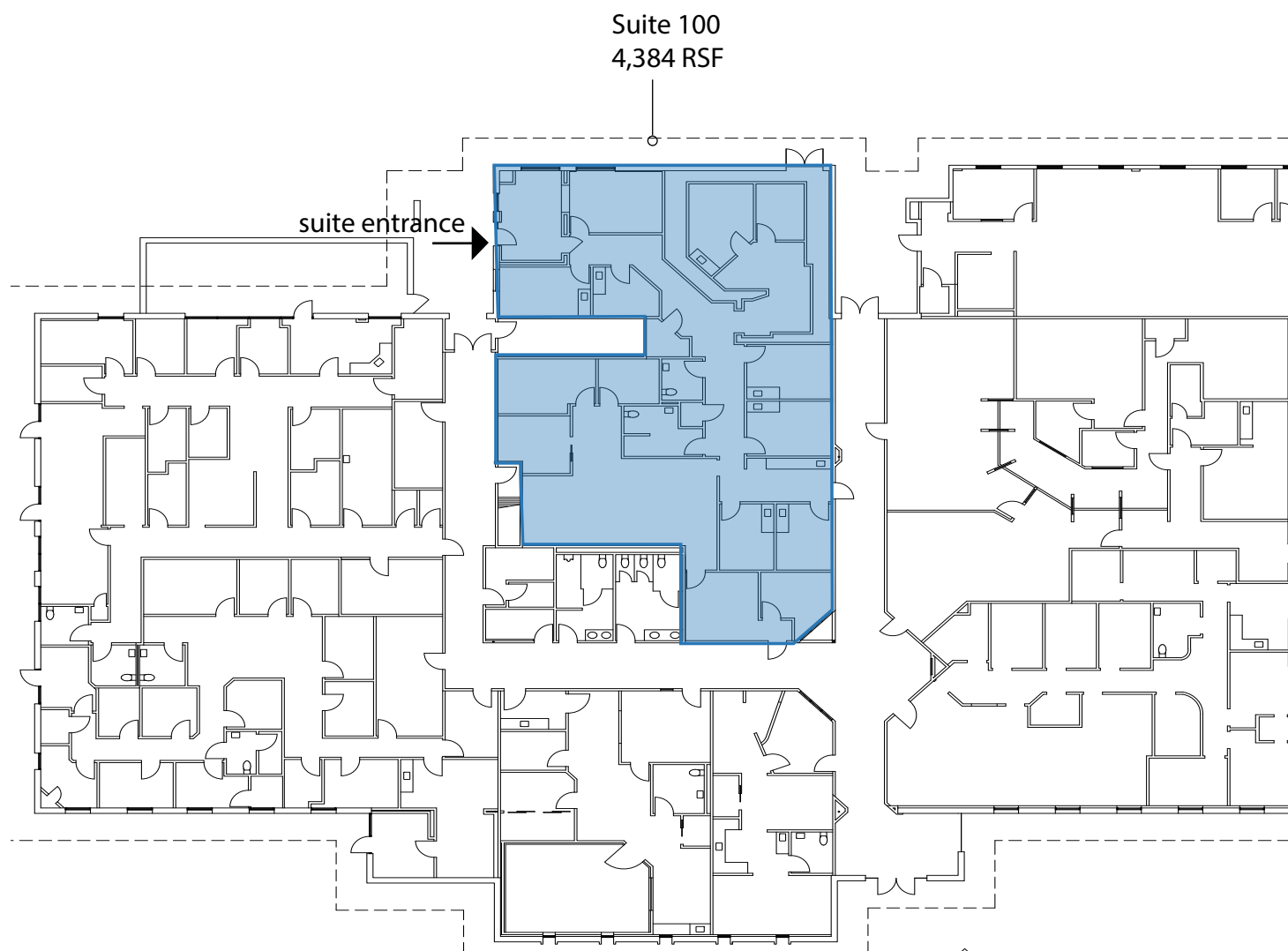
Lael Crompton | Senior Director of Leasing  
Phone: 858-794-1900 | [lcrompton@pmbres.com](mailto:lcrompton@pmbres.com)  
[www.pmbres.com](http://www.pmbres.com) | CA Lic. 01871298



PMB Real Estate Services

# 865 Third Avenue

## 1st Floor Availabilities:



### For Leasing Information:

Lael Crompton | Senior Director of Leasing

Phone: 858-794-1900 | [lcrompton@pmbres.com](mailto:lcrompton@pmbres.com)



PMB Real Estate Services