

# OFFICE AND WAREHOUSE FOR LEASE

**1535 Grimmer Drive**



## Office and Warehouse

This highly visible office and warehouse is located within the Roberts Center Complex which benefits from an outstanding location in one of Shreveport's fastest growing business areas. Amenities include carpeting, outside sprinkler system, and security system. Owner/Licensed Real Estate Agent. 7/1/24

**Lease \$2,650 per month**

- Approx. 3,500 Square Feet
- 2,100 Square Feet Warehouse Area
- Five Offices
- Brick Construction
- Centrally Located
- Additional Information and Pictures upon request.
- Network Wiring
- Ample Parking
- Excellent Visibility and Access
- Lease - \$2,650 per month
- Ample Storage



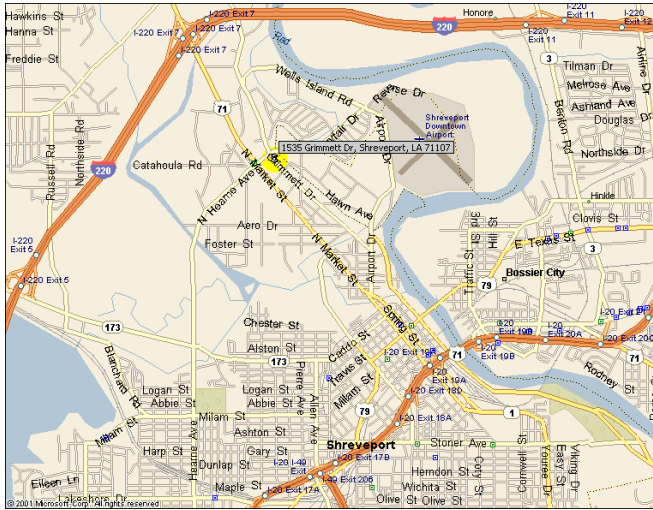
### Roberts Property Management, Inc.

1500 NORTH MARKET  
SUITE R-300  
SHREVEPORT, LA 71107  
FAX: 1-318-226-0965

EMAIL: [BRUCE@ROBERTSCO.COM](mailto:BRUCE@ROBERTSCO.COM)

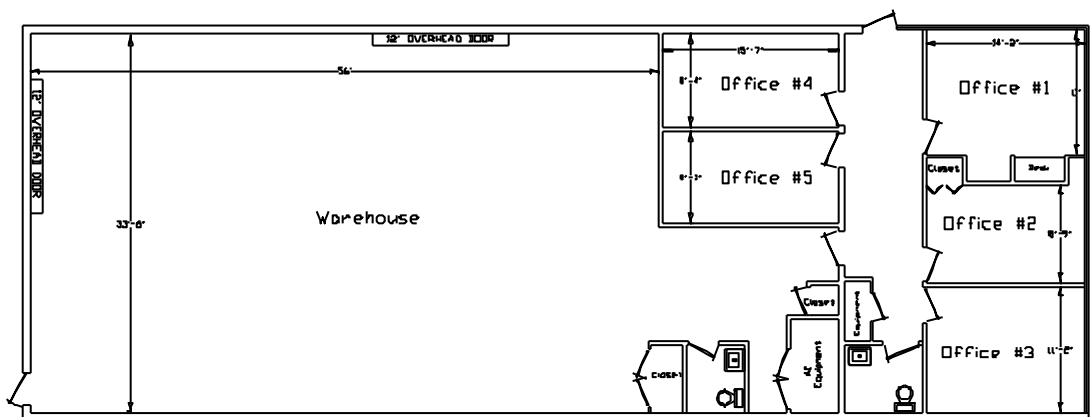
LICENSED BY LOUISIANA REAL ESTATE COMMISSION





Located in the North Shreveport business district, this one-story office and warehouse offers strong visibility and excellent access to I-220, I-20, I-49, Fant Parkway, Shreveport's Entertainment District, North Caddo and Bossier Parish, and only 2 minutes from downtown Shreveport.

The main secretarial room measures 14'2" X 11' 0" excluding storage area and built-in computer desk. Separate bathrooms are provided for the office area and the warehouse area.



All information herein is believed to be accurate, but is not warranted and no liability or errors or omissions is assumed. Prices as stated herein and property availability is subject to change and/or sale or lease without prior notice, and all sizes and dimensions are subject to correction.

