

NIGHT CLUB BLDG & BUSINESS

2910 Bristol Highway
Johnson City, TN 37601

Location

On Bristol Hwy, near the intersection of E Oakland Ave

Available for Sale

12,884 SF restaurant/night club building
1.98-acre adjacent vacant lot on E Oakland Ave
Business is included in the sale
\$2,205,000

Highlights

Several seating areas, plus covered patio
Stage, dance floor, bars and DJ booth
Commercial kitchen with appliances and hood system
Spacious parking lot
Pylon sign
Great location in a dense retail district
0.8 miles from I-26, exit 20

Traffic Counts

Bristol Hwy: 18,475 (2022)
N Roan St: 22,187 (2022)

Demographics

(2025 Est.)	3 mile	5 mile	10 mile
Population	35,904	80,962	171,285
Median HH Income	\$66,578	\$60,101	\$63,757
Median Age	43.1	38.2	41.9

Contact

Shannon K. Castillo

Broker

shannon@mitchcox.com

O 423-282-6582 | F 423-282-5903
www.mitchcox.com





subject

General Shale

GRAND

Smart

BIG

O'Reilly

Pizza

Northwest

Subaru

AutoZone

Logic

Shell

U-Haul

U-Haul

Advance

Auto Parts

Logic

Logic

Logic

Logic

Logic

Logic

Logic

Logic

Logic

Logic

Logic

Logic

Logic

Logic

Logic

Logic

Logic

Logic

Logic

Logic

Logic

Logic

Logic

Logic

Logic

Logic

Logic

Logic

Logic

Logic

Logic

Logic

Logic

Logic

Logic

Logic

Logic

Logic

Logic

Logic

Logic

Logic

Logic

Logic

Logic

Logic

Logic

Logic

Logic

Logic

Logic

Logic

Logic

Logic

Logic

Logic

Logic

Logic

Logic

Logic

Logic

Logic

Logic

Logic

Logic

Logic

Logic

Logic

Logic

Logic

Logic

Logic

Logic

Logic

Logic

Logic

Logic

Logic

Logic

Logic

Logic

Logic

Logic

Logic

Logic

Logic

Logic

Logic

Logic

Logic

Logic

Logic

Logic

Logic

Logic

Logic

Logic

Logic

Logic

Logic

Logic

Logic

Logic

Logic

Logic

Logic

Logic

Logic

Logic

Logic

Logic

Logic

Logic

Logic

Logic

Logic

Logic

Logic

Logic

Logic

Logic

Logic

Logic

Logic

Logic

Logic

Logic

Logic

Logic

Logic

Logic

Logic

Logic

Logic

Logic

Logic

Logic

Logic

Logic

Logic

Logic

Logic

Logic

Logic

Logic

Logic

Logic

Logic

Logic

Logic

Logic

Logic

Logic

Logic

Logic

Logic

Logic

Logic

Logic

Logic

Logic

Logic

Logic

Logic

Logic

Logic

Logic

Logic

Logic

Logic

Logic

Logic

Logic

Logic

Logic

Logic

Logic

Logic

Logic

Logic

Logic

Logic

Logic

Logic

Logic

Logic

Logic

Logic

Logic

Logic

Logic

Logic

Logic

Logic

Logic

Logic

Logic

Logic

Logic

Logic

Logic

Logic

Logic

Logic

Logic

Logic

Logic

Logic

Logic

Logic

Logic

Logic

Logic

Logic

Logic

Logic

Logic

Logic

Logic

Logic

Logic

Logic

Logic

Logic

Logic

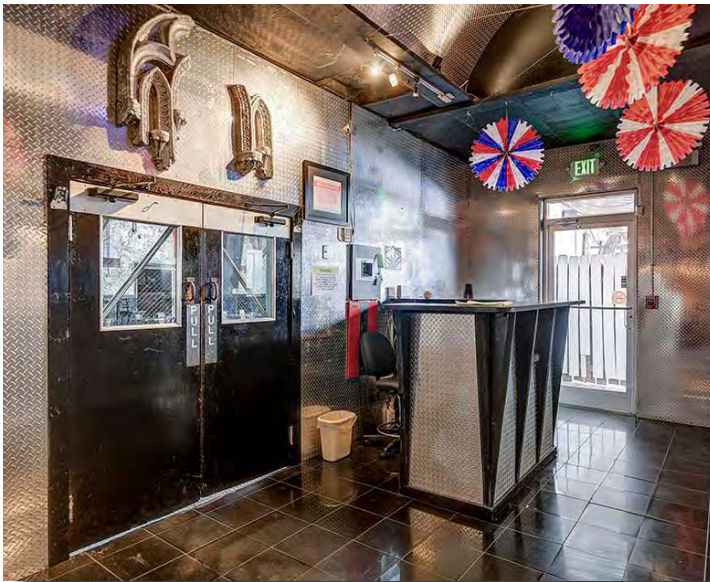
Logic

Logic

Logic

Logic





MITCH COX
REALTOR, INC.

2304 Silverdale Drive, Suite 200, Johnson City, TN 37601
423-282-6582 (o) 423-282-5903 (f) www.mitchcox.com