

FOR LEASE

Owned and Operated by  **LINK**

CAMERON ROAD CORPORATE PARK I & II

1130 Rutherford Lane, Austin, TX 78753

15,270 - 47,171 SF
Available



LEASING INFO & CONTACT

Sam Owen

(512) 481-3030 / sowen@streamrealty.com

Mitchell Becker

(512) 481-3012 / mitchell.becker@streamrealty.com


STREAM

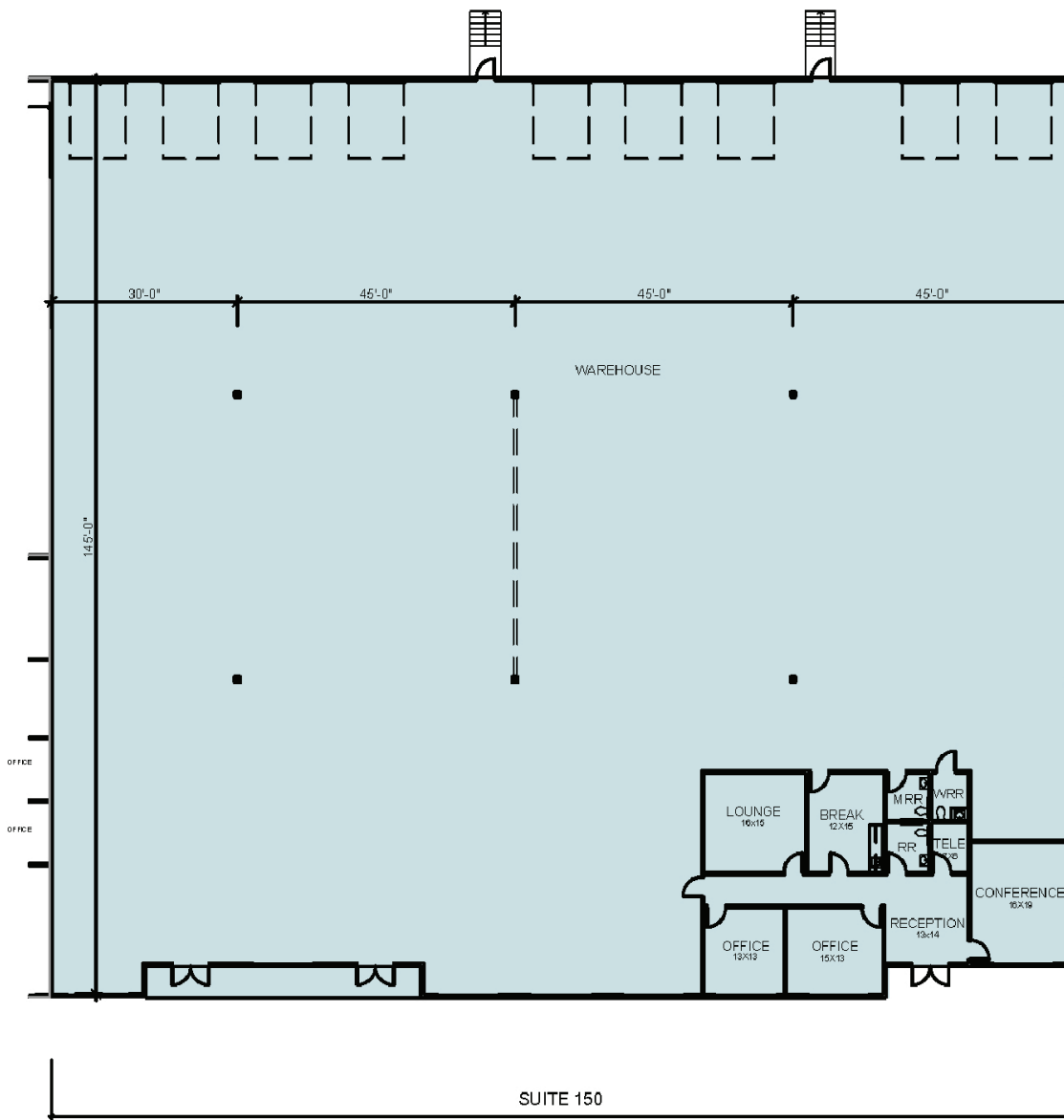
This is not an offer or acceptance of an offer to lease space. A lease will only be offered or made in a written agreement signed by landlord. No representation or warranty of any kind is made by landlord unless set forth in a written definitive lease executed by the landlord.

FOR LEASE



SUITE 150

- 23,546 SF
- +/-24' Clear Height
- 9 Dock-High Doors
- 10% Office | 90% Warehouse

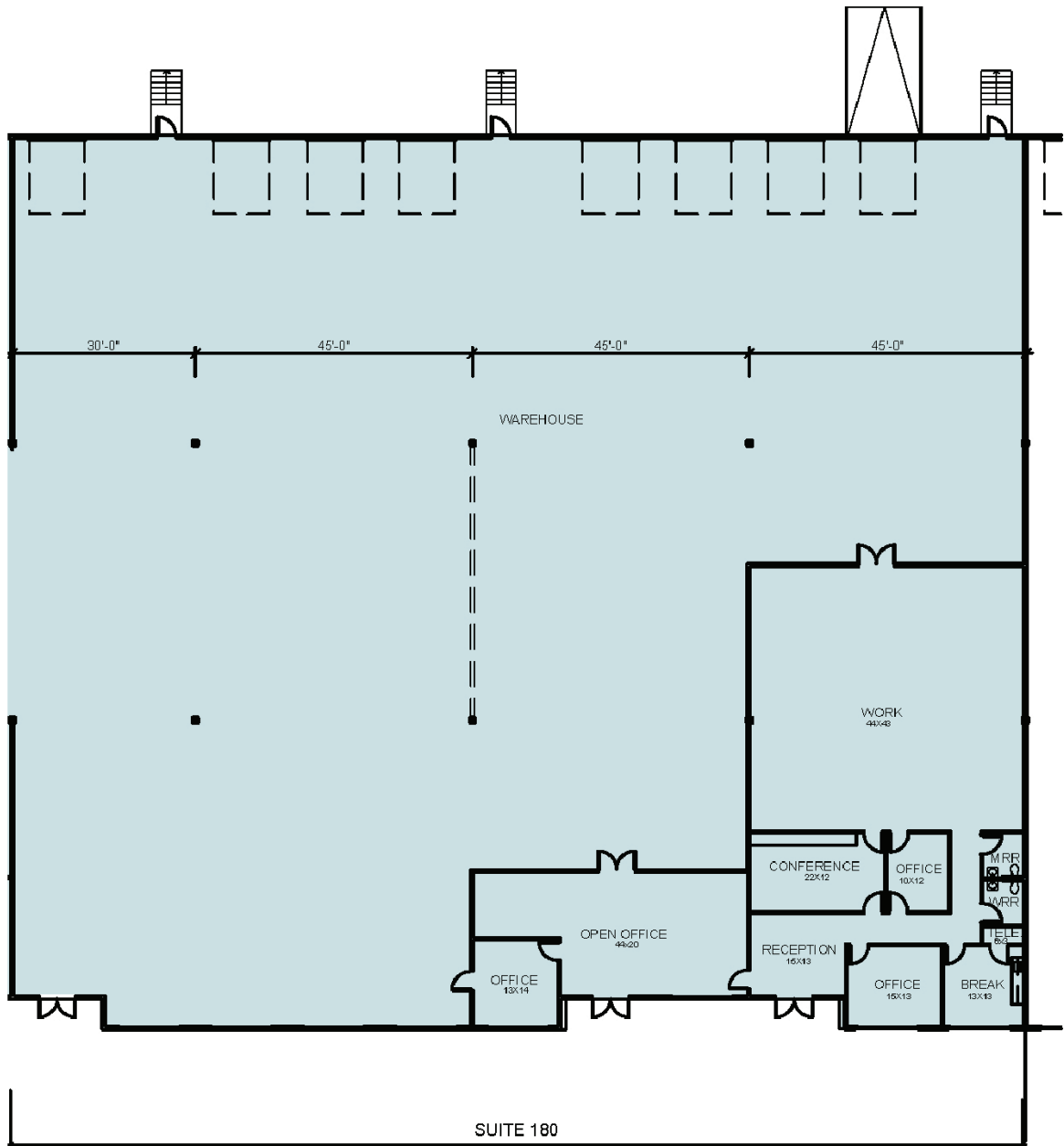


FOR LEASE



SUITE 180

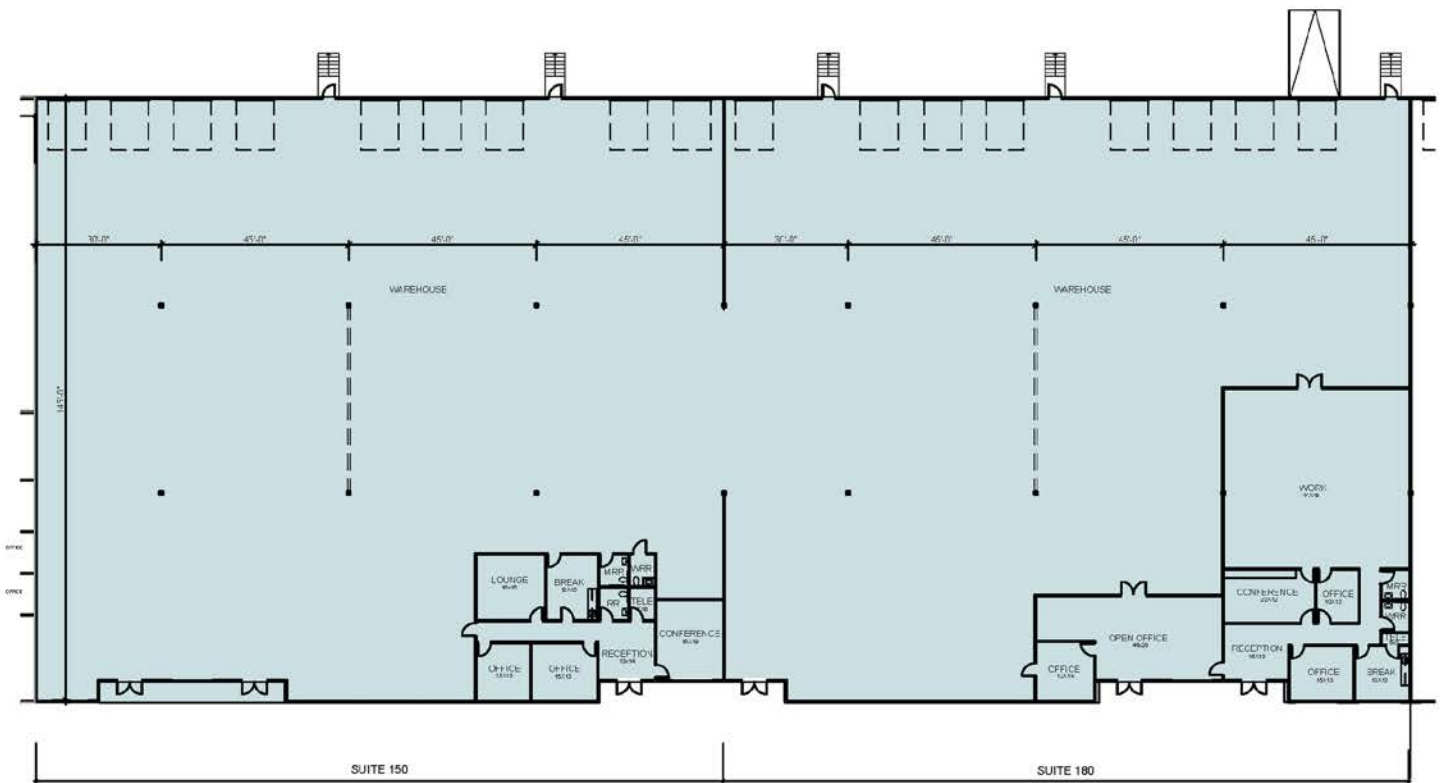
- 23,625 SF
- +/-24' Clear Height
- 7 Dock-High Doors and 1 Ramp
- 15% Office | 90% Warehouse



FOR LEASE

AVAILABLE NOW: SUITE 150 + SUITE 180

- 47,171 SF
- +/-24' Clear Height
- 17 Dock-High Doors
- 10% Office | 90% Warehouse



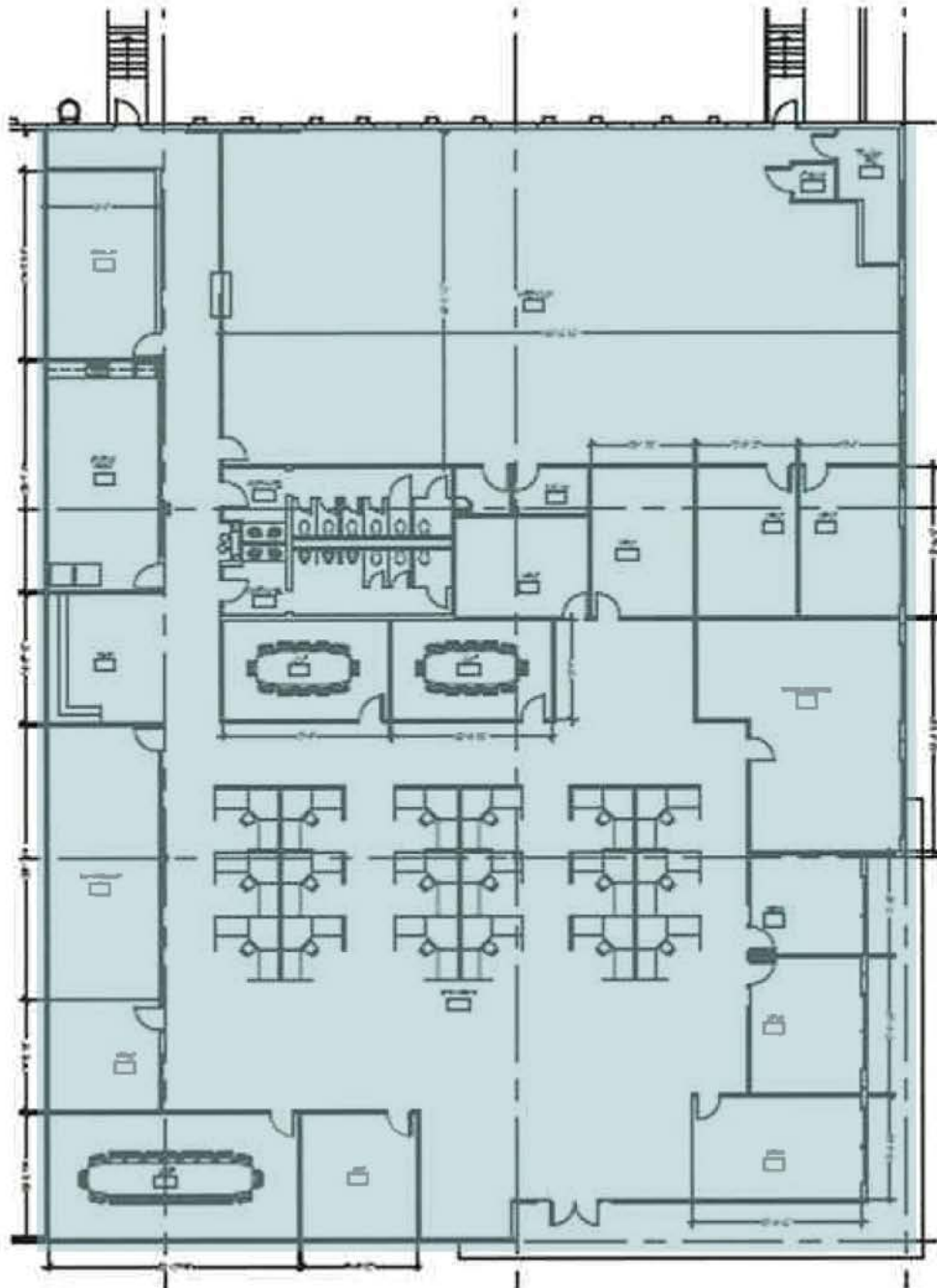
SUITE 150 - 23,546 SF

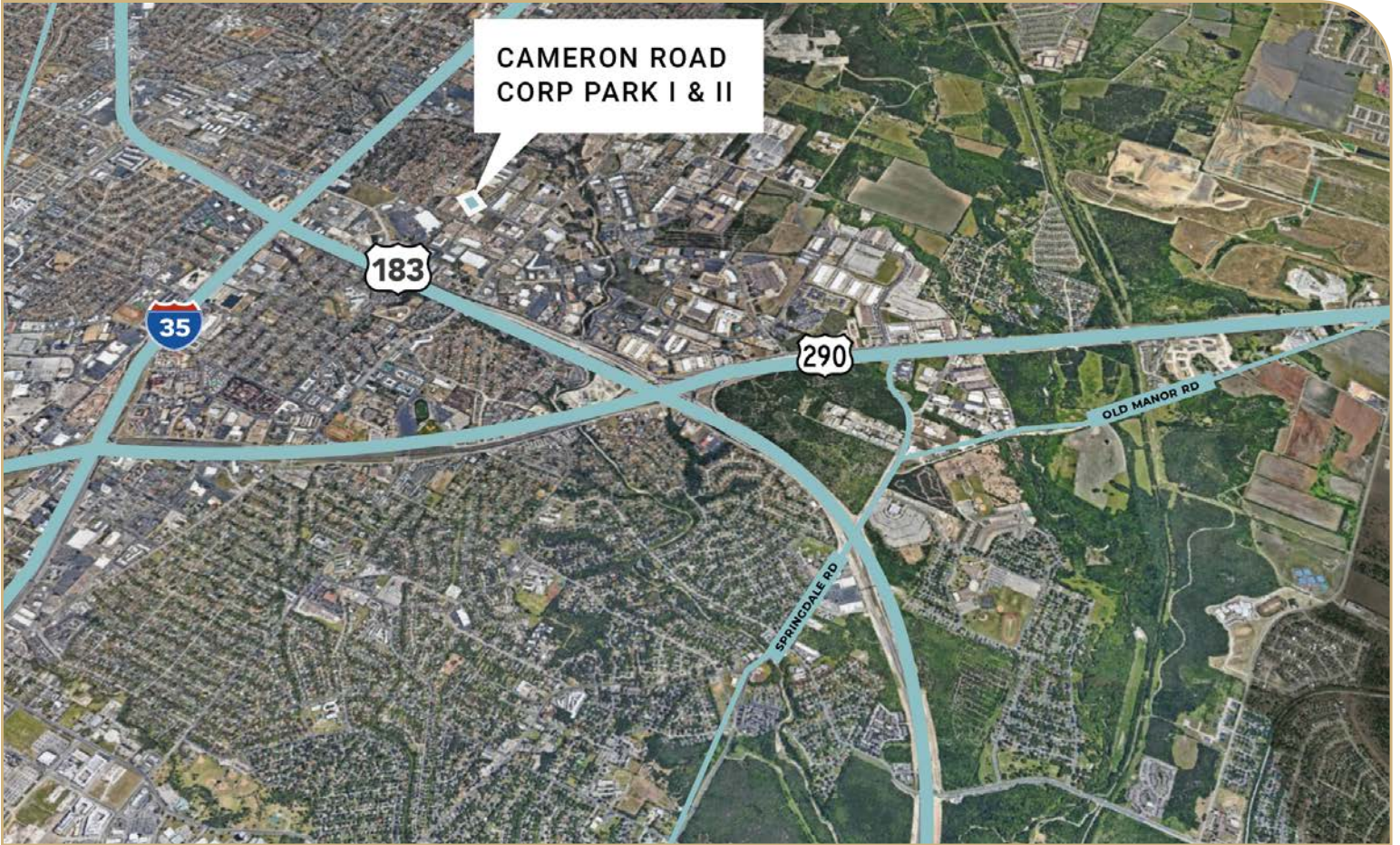
SUITE 180 - 23,625 SF

FOR LEASE

SUITE 200

- 15,270 SF
- Available in 30 Days
- +/-24' Clear Height
- 4 Dock-High Doors
- 75% Office | 25% Warehouse
- 100% HVAC





DRIVE TIMES

Austin-Bergstrom Int. Airport	15 Minutes
Downtown Austin	12 Minutes
Rollingwood	18 Minutes
The Domain	10 Minutes
San Antonio	1 Hour
Houston	2 Hours

