

NOW LEASING  
SUITE B3, B4 & B5

# ONLY SUITE B-3 AVAILABLE

10,000 SF TOTAL • 1,300 SF OFFICE  
*All other suites: LEASED*

Updated per client • Nov 7, 2025

13702 SOUTH 200 WEST // DRAPER, UTAH



## PROPERTY FEATURES:

- **Available:** Total: 20,002 SF  
Office: ±2600 SF  
Warehouse: ±17,402 SF  
Minimum Divisible : 10,000 SF
- **Lease Rate:** \$1.15 PSF, NNN Lease Rate
- **Availability:** May 1, 2025
- **Clear Height:** 24'
- **Loading:** 2 ground level and 2 dock door
- **Truck Court Sizes:** 118' 8" to 180' 5"
- **Power:** 1200 AMPS 277/480V, 3 Phase
- **Fire Suppression:** ESFR
- **Parking:** 28 non-reserved common parking stalls
- **Distance to I-15 Interchange:** Less than 1 minute (only 0.4 Miles)
- **Bangerter Frontage:** Promote your company on Bangerter Hwy

FOR MORE  
INFORMATION  
PLEASE CONTACT

**Marcus Watkins**  
801-866-2519  
marcuswatkinsutah@gmail.com

**Matt Watkins**  
801-631-2916  
mattwatkins76@gmail.com

**equity**  
REAL ESTATE

NOW LEASING  
SUITE B-2

# ONLY SUITE B-3 AVAILABLE

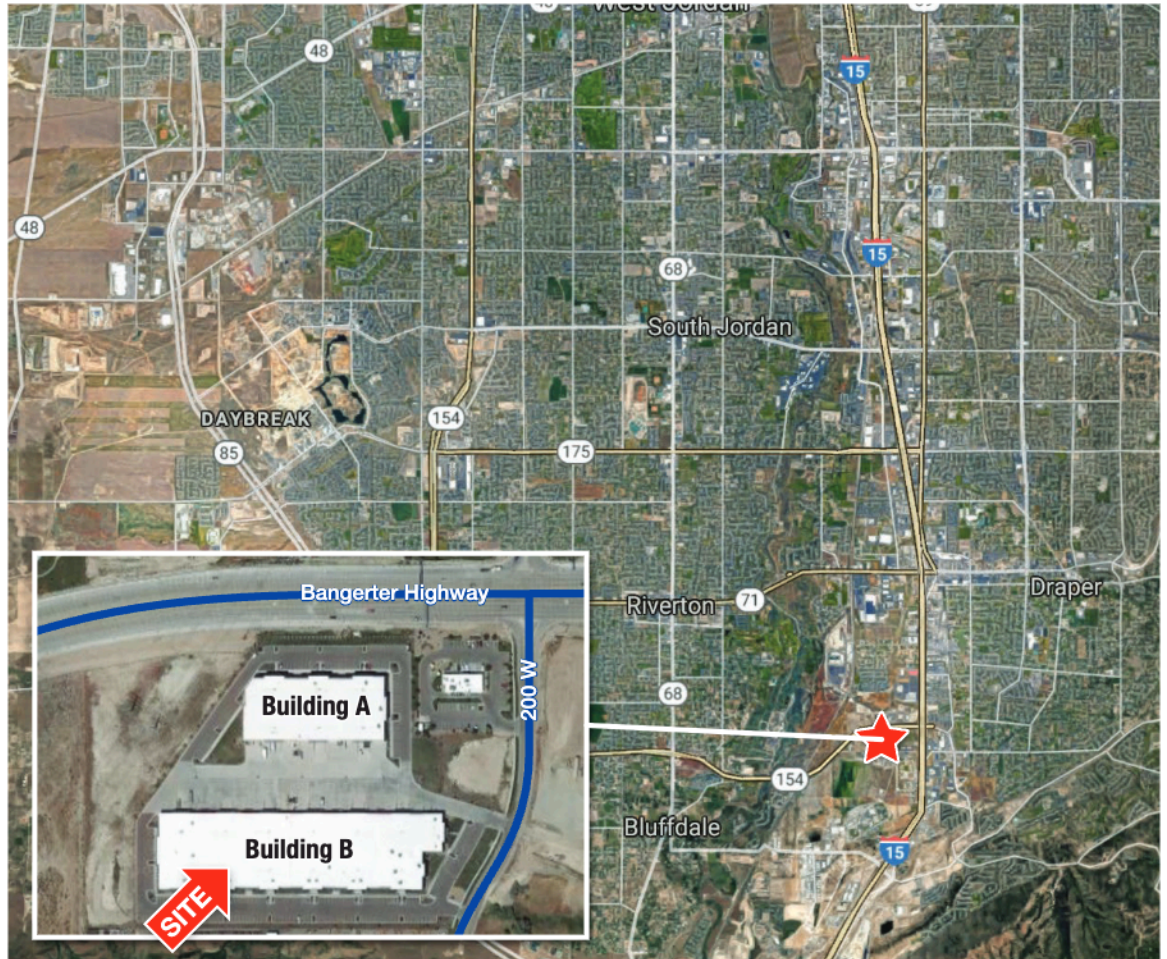
10,000 SF TOTAL • 1,300 SF OFFICE

*All other suites: LEASED*

Updated per client • Nov 7, 2025

13702 SOUTH 200 WEST // DRAPER, UTAH

## SITE MAP



Equity Real Estate | 321 E State St, American Fork, UT 84003

© 2018 Equity Real Estate. This information has been obtained from sources believed reliable. We have not verified it and make no guarantee, warranty or representation about it. Any projections, opinions, assumptions or estimates used are for example only and do not represent the current or future performance of the property. You and your advisors should conduct a careful, independent investigation of the property to determine to your satisfaction the suitability of the property for your needs.