

GENERAL OFFICE | UP TO 3,080 SF FOR LEASE

4220 E Los Angeles Ave, Simi Valley, CA 93063

- ✓ ENTIRE BUILDING AVAILABLE
- ✓ MOVE-IN READY

OCCUPY THE WHOLE FLOOR
OR THE WHOLE BUILDING!

2 Story Building

Both Floors Available

Units from 397 SF to 892 SF

First Floor Max. Contig. 786 SF

Second Floor Max. Contig. 1,687 SF

Lease Rate: \$1.90/SF

Lease Type: Modified Gross

Parking: 12 Spaces (3.9/1,000)






The information presented in this marketing brochure is from sources believed to be reliable. No representations or warranties are made as to the accuracy of the information presented.



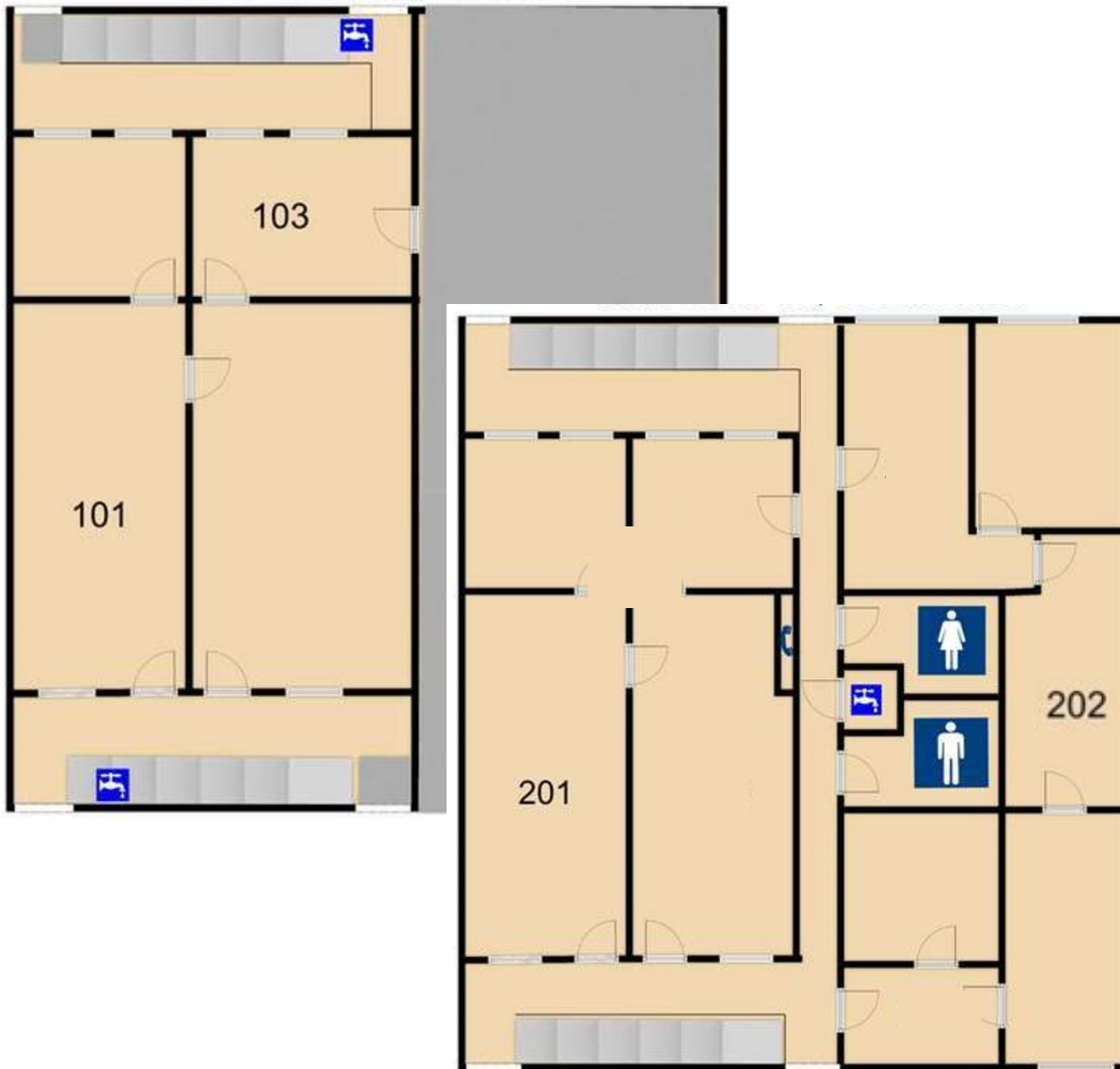
MARKOWITZ
COMMERCIAL REAL ESTATE INC.

CONTACT:

Josh Markowitz | President
DRE 02199357

 markowitzcre.com
 josh@markowitzcre.com
 818.337.9066

SITE PLAN



✓ SUITE 101

389 SF

✓ SUITE 103

397 SF

✓ SUITE 201

786 SF

✓ SUITE 202

892 SF

First Floor Max. Contig. 786 SF

Second Floor Max. Contig. 1,687 SF