

# 801 E. FOURTH ST. GILLETTE, WY 82716

SPACE FOR LEASE



## THE BOARDWALK TRIUMPH CONDOMINIUMS SUITE #10

**FOR LEASE**

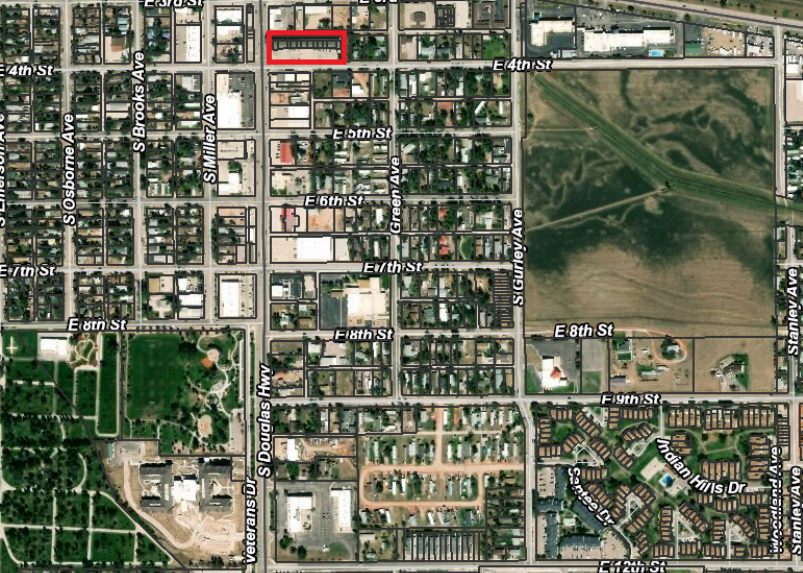
### Property Highlights

Many businesses have started in this prime location on Highway 59. Multiple units with multiple different lease options. Two story commercial building housing office and retail businesses. The property has 24 units, that range from 800 sq. ft. to 2000 sq. ft. Many of the interior spaces have been remodeled and a complete exterior remodel was completed in 2010. All units have utilities metered separately with natural gas forced air furnaces. Built to suit options available.

- LOCATED ON HWY 59
- GREAT VISIBILITY
- ACCOMMODATES BOTH OFFICE AND RETAIL
- EASY ACCESS TO I-90
- 800 SF UNIT
- \$12.00/SF/YEAR
- RENT \$800.00/MONTH
- CAM FEES \$0.50/SF/YEAR
- AVAILABLE NOW!

CONTACT BRIAN BROWN 307-686-8125 [BBROWN@SCHILLINGCOMPANIES.COM](mailto:BBROWN@SCHILLINGCOMPANIES.COM)





FOR MORE INFORMATION CONTACT  
 BRIAN BROWN | 307-686-8125 |  
 BBROWN@SCHILLINGCOMPANIES.COM



(307) 686-8125 WWW.SCHILLINGCOMPANIES.COM