

# AVAILABLE

## Tomlynn Business Center

2000 - 2018 Tomlynn Street, Richmond, VA 23230



### Exclusive Agent:

**WILSON FLOHR, SIOR**  
(804) 521-1458  
wilson@porterinc.com

### HIGHLIGHTS

- Unit 2012: 1,918 SF - Available February 2026
- Drive-In Loading
- 14' Clear Ceilings
- Zoned M-1
- Excellent Location! Easy Access to I-64 & I-95
- For Lease: \$2,500/month

4801 Radford Avenue | P.O. Box 6482  
Richmond, VA 23230  
www.porterinc.com  
804-353-7994

**PORTER**  
R E A L T Y

CORFAC  
INTERNATIONAL

SIOR

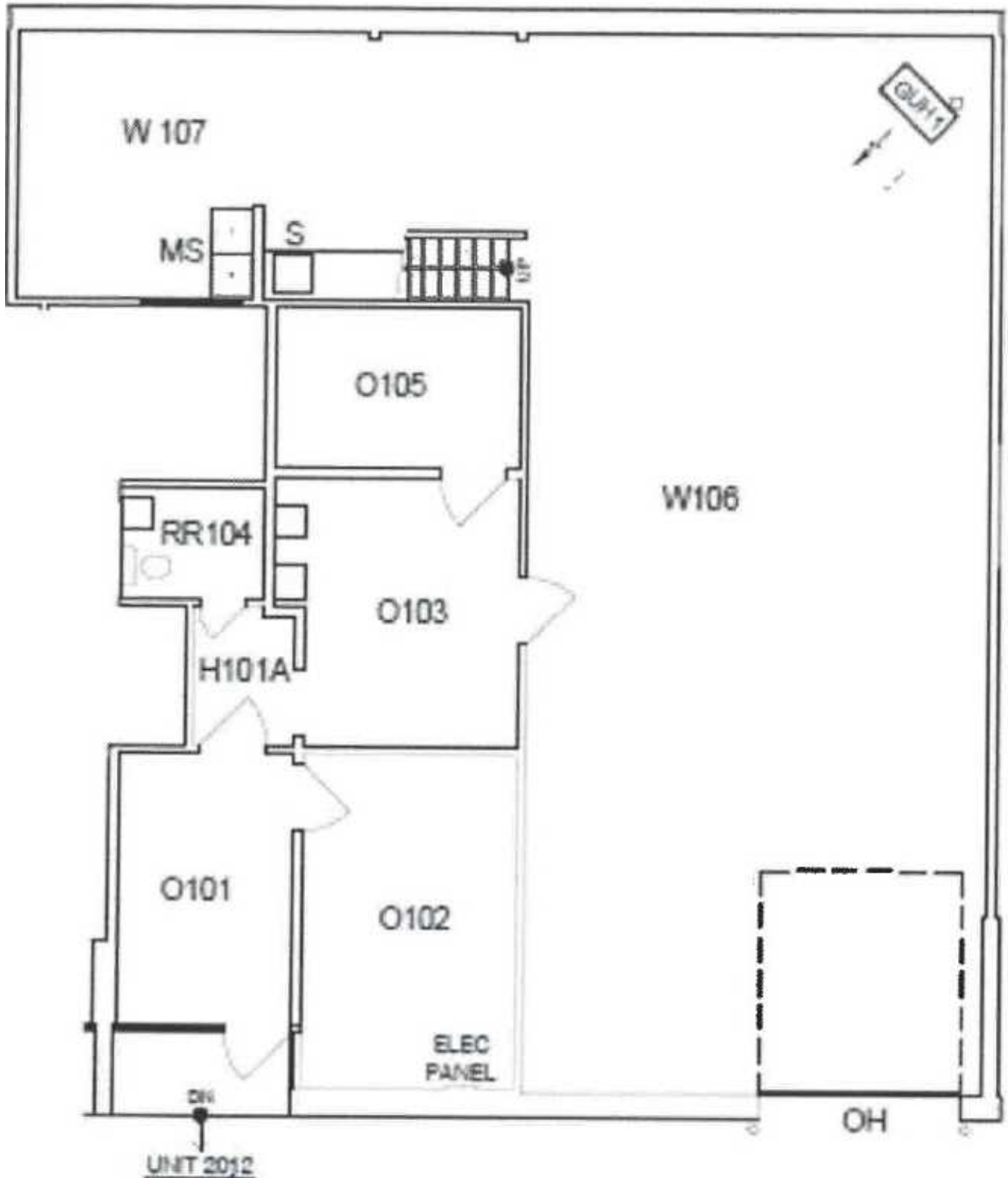
CCIM

This information has been prepared by Porter Realty Company, Inc. for marketing purposes only. No representation or warranty, expressed or implied, is made as to the accuracy of the foregoing information. Terms of sale or lease and availability are subject to change or withdrawal without notice.

# PROPERTY PHOTOS

2000 - 2018 Tomlynn Street | Richmond, VA 23230

Tomlynn Business Center



Wilson Flohr, SIOR  
(804) 521-1458  
wilson@porterinc.com



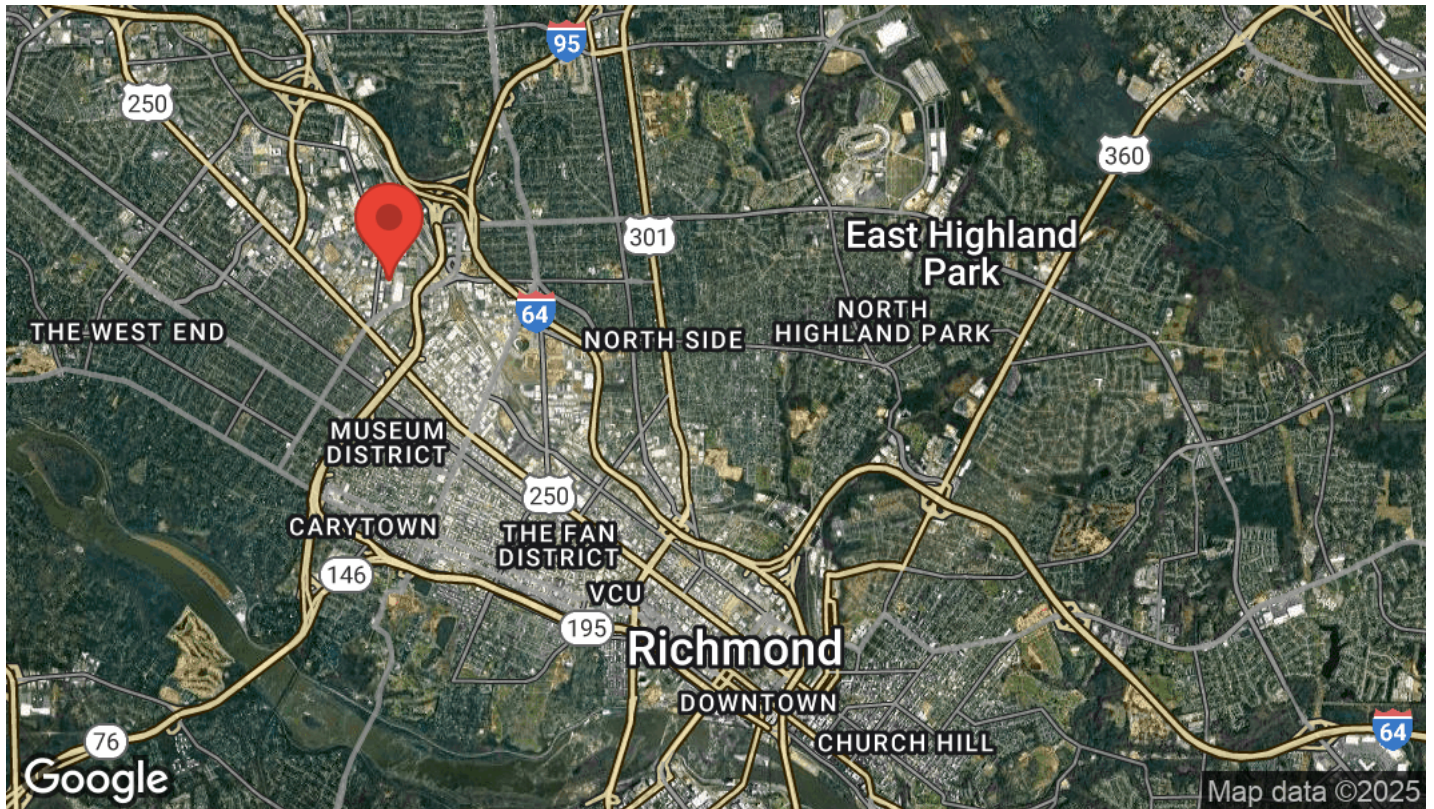
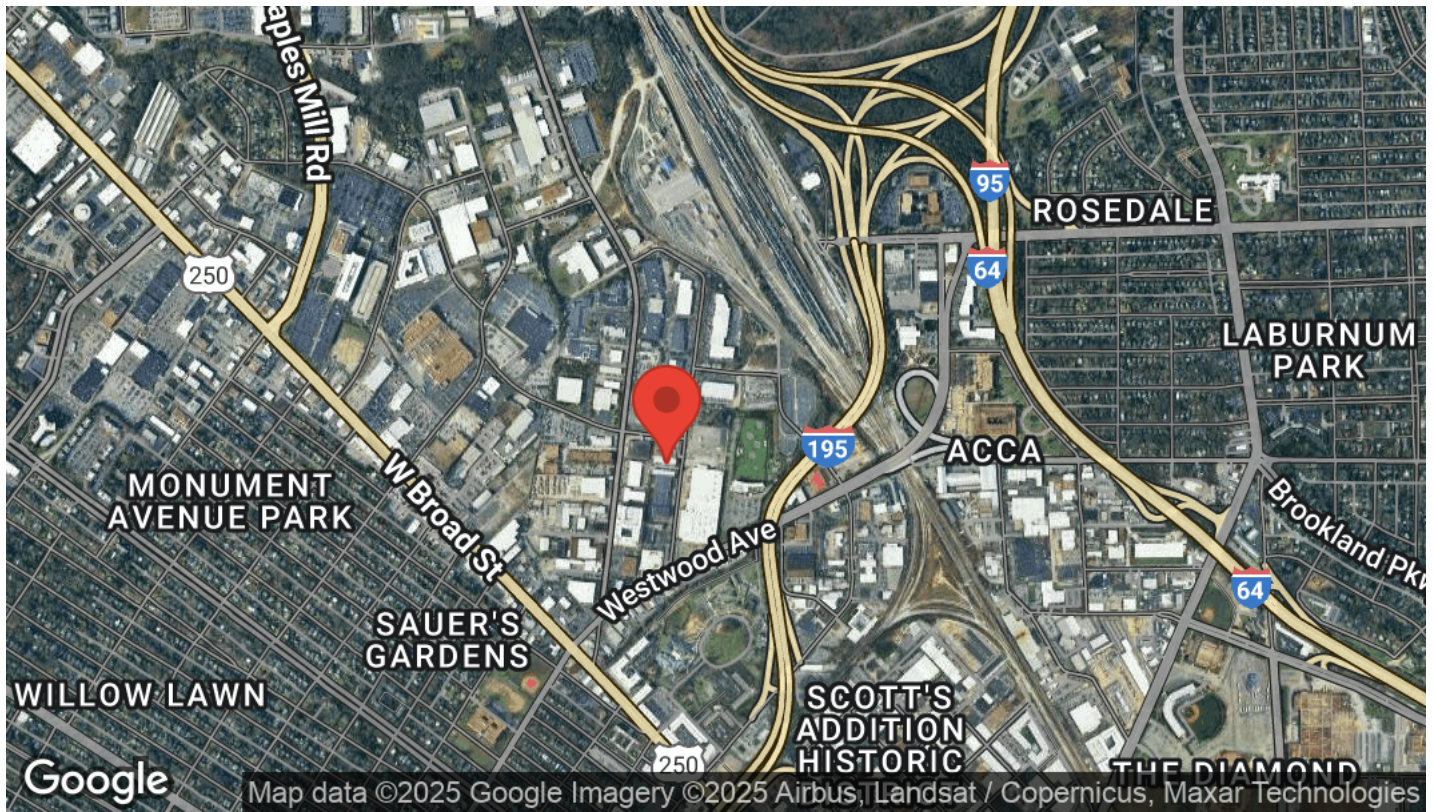
Porter Realty Company, Inc. | 4801 Radford Avenue | P.O. Box 6482 | Richmond, VA 23230 | www.porterinc.com

This information has been prepared by Porter Realty Company, Inc. for marketing purposes only. No representation or warranty, expressed or implied, is made as to the accuracy of the foregoing information. Terms of sale or lease and availability are subject to change or withdrawal without notice.

# LOCATION MAPS

2000 - 2018 Tomlynn Street | Richmond, VA 23230

Tomlynn Business Center



Wilson Flohr, SIOR  
(804) 521-1458  
wilson@porterinc.com



Porter Realty Company, Inc. | 4801 Radford Avenue | P.O. Box 6482 | Richmond, VA 23230 | www.porterinc.com

This information has been prepared by Porter Realty Company, Inc. for marketing purposes only. No representation or warranty, expressed or implied, is made as to the accuracy of the foregoing information. Terms of sale or lease and availability are subject to change or withdrawal without notice.