

INLET SQUARE REDEVELOPMENT



12125 US Highway 17 Bypass South | Murrells Inlet, SC 29576



PARAMOUNT
DEVELOPMENT CORPORATION

K. Neal Bowers, CCIM

David E. Harner, CCIM

843.655.2251 | nbowers@paramountdevcorp.com

843.907.1415 | dharner@paramountdevcorp.com

INLET SQUARE REDEVELOPMENT

12125 US Highway 17 Bypass South | Murrells Inlet, SC 29576



SIZE

- 1,600 – 30,000 SF and up available
- 0.75 – 2.5 acre outparcels for lease, sale or BTS

HIGHLIGHTS

- Inlet Square is being redeveloped from a 500K enclosed mall to a 250K SF mixed use development complete with retail, medical, hotels and multifamily
- Anticipated completion date: Spring 2025
- Easy access to US-Hwy 17 & US-Bus Hwy 17
- Near major retailers - Home Depot, Walmart Neighborhood Market, Walmart, Kroger
- Huntington Beach State Park: This nearby state park features pristine beaches, hiking trails, a birdwatching boardwalk, and Atalaya Castle
- Many people choose to live in the area for its coastal charm, outdoor recreational opportunities, and proximity to Myrtle Beach, which is about 10 miles to the north.



PARAMOUNT
DEVELOPMENT CORPORATION

K. Neal Bowers, CCIM

843.655.2251 | nbowers@paramountdevcorp.com

David E. Harner, CCIM

843.907.1415 | dharner@paramountdevcorp.com

INLET SQUARE REDEVELOPMENT

12125 US Highway 17 Bypass South | Murrells Inlet, SC 29576

Property Name	SC Murrells Inlet - Mall Redevelopment
Property Address	10125 Hwy 17 Bypass, Murrells Inlet, SC 29576
County	Horry
Property Type	Mixed-Use, Retail, Office, Medical, Hotel, Multi-Family
Lot Size	60 AC
Building Size	225,000 SF
Zoning	Highway Commercial (HC)
Traffic Count	36,000 AADT
Traffic Street	US-17

PROPERTY OVERVIEW

The Inlet Square redevelopment is located in Murrells Inlet, a high growth community that is part of the Myrtle Beach metropolitan statistical area. The Myrtle Beach area attracts over 19 million visitors annually. The metro area population of Myrtle Beach in 2021 was 393,000, a 9.74% increase from 2019 – placing this coastal South Carolina MSA in the top 3rd fastest growing mid-sized areas in the country for the 5th consecutive year.

LOCATION OVERVIEW

Murrells Inlet is located just 8 miles south of Myrtle Beach and approximately 10 miles north of the Pawleys Island Community. Historically a fishing village, today Murrells Inlet is an “outdoorsman’s dream”, offering ample opportunities for anglers, golfers, nature lovers, beach goers, shoppers and those hungry for some of the best culinary experiences the South Carolina coastline has to offer.



PARAMOUNT
DEVELOPMENT CORPORATION

K. Neal Bowers, CCIM

843.655.2251 | nbowers@paramountdevcorp.com

David E. Harner, CCIM

843.907.1415 | dharner@paramountdevcorp.com

INLET SQUARE REDEVELOPMENT

12125 US Highway 17 Bypass South | Murrells Inlet, SC 29576



HIGHLIGHTS

- The Myrtle Beach area attracts over 19 million visitors annually
- Myrtle Beach's area population grew by roughly 9.74% from 2019 to 2021, making the coastal South Carolina metropolitan area the 3rd fastest-growing market
- Myrtle Beach is one of the most popular family beach destinations on the East Coast, with 60 miles of beach-front and 100,000 rental units
- Approximately 90 golf courses and 2.7 million rounds of golf have been played in the Myrtle Beach area
- Around 8 miles South of Myrtle Beach and 10 miles North of Pawley's Island
- Proximity to Myrtle Beach International Airport

TOP 10 FASTEST GROWING MID-SIZE METRO AREAS

METRO AREA	PROJECTED POPULATION GROWTH RATE (2023-2028)	POPULATION (2023)	PROJECTED POPULATION (2023)
PROVO-OREM, UT	14.09%	710,895	811,060
BOISE CITY, ID	11.41%	806,834	898,894
MYRTLE BEACH-CONWAY-NORTH MYRTLE BEACH, SC-NC	10.91%	522,256	579,234
MCALLEN-EDINBURG-MISSION, TX	9.27%	902,031	985,649
FAYETTEVILLE-SPRINGDALE-ROGERS, AR	9.18%	566,617	618,632
CHARLESTON-NORTH CHARLESTON, SC	8.66%	814,950	885,525
DES MOINES-WEST DES MOINES, IA	8.30%	726,069	786,333
OGDEN-CLEARFIELD, UT	7.92%	708,823	764,962
NORTH PORT-SARASOTA-BRADENTON, FL	7.48%	858,260	922,458
RENO, NV	7.14%	506,384	542,540



PARAMOUNT
DEVELOPMENT CORPORATION

K. Neal Bowers, CCIM

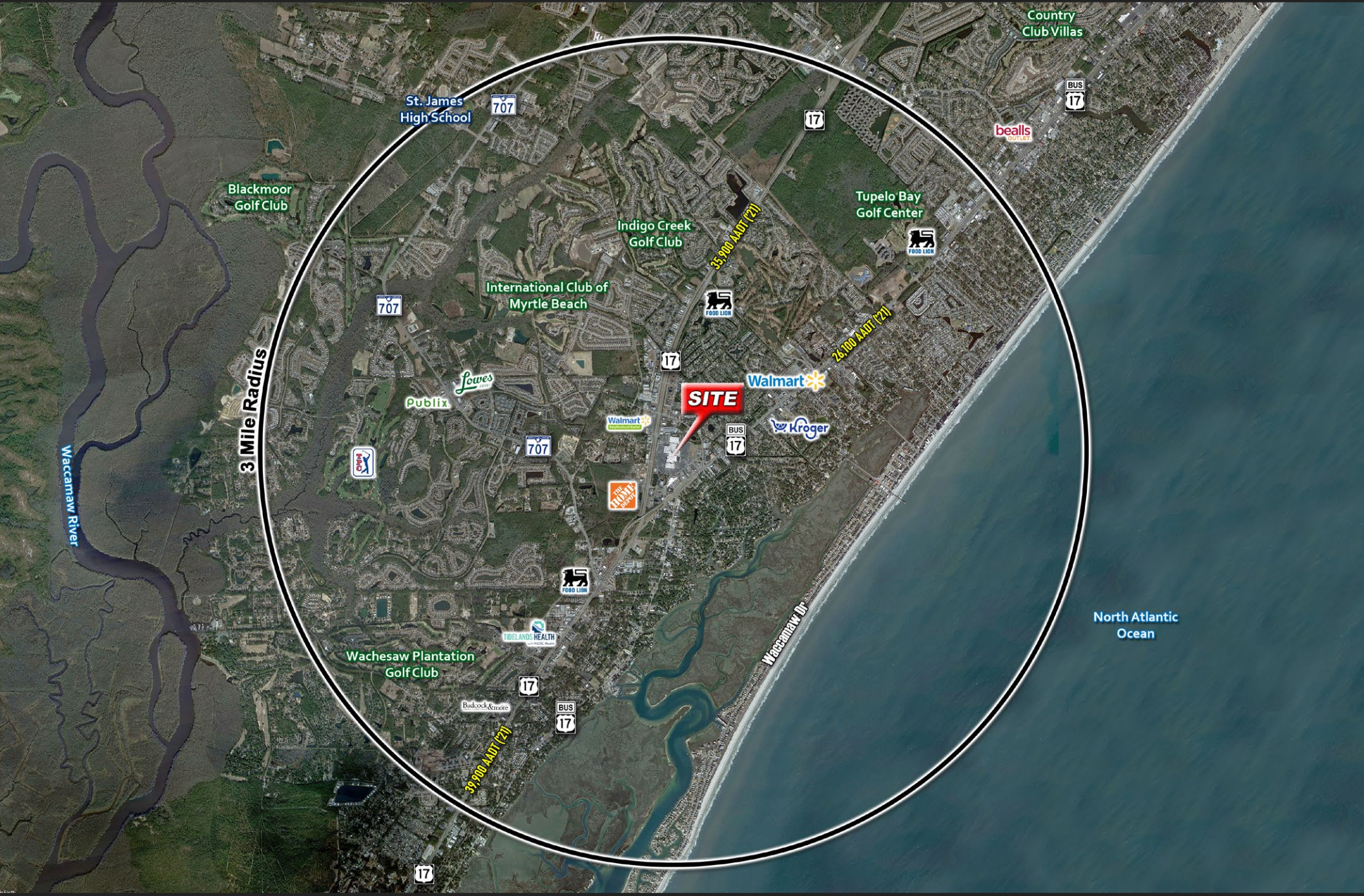
843.655.2251 | nbowers@paramountdevcorp.com

David E. Harner, CCIM

843.907.1415 | dharner@paramountdevcorp.com

INLET SQUARE REDEVELOPMENT

12125 US Highway 17 Bypass South | Murrells Inlet, SC 29576



INLET SQUARE REDEVELOPMENT

12125 US Highway 17 Bypass South | Murrells Inlet, SC 29576



PARAMOUNT
DEVELOPMENT CORPORATION

K. Neal Bowers, CCIM

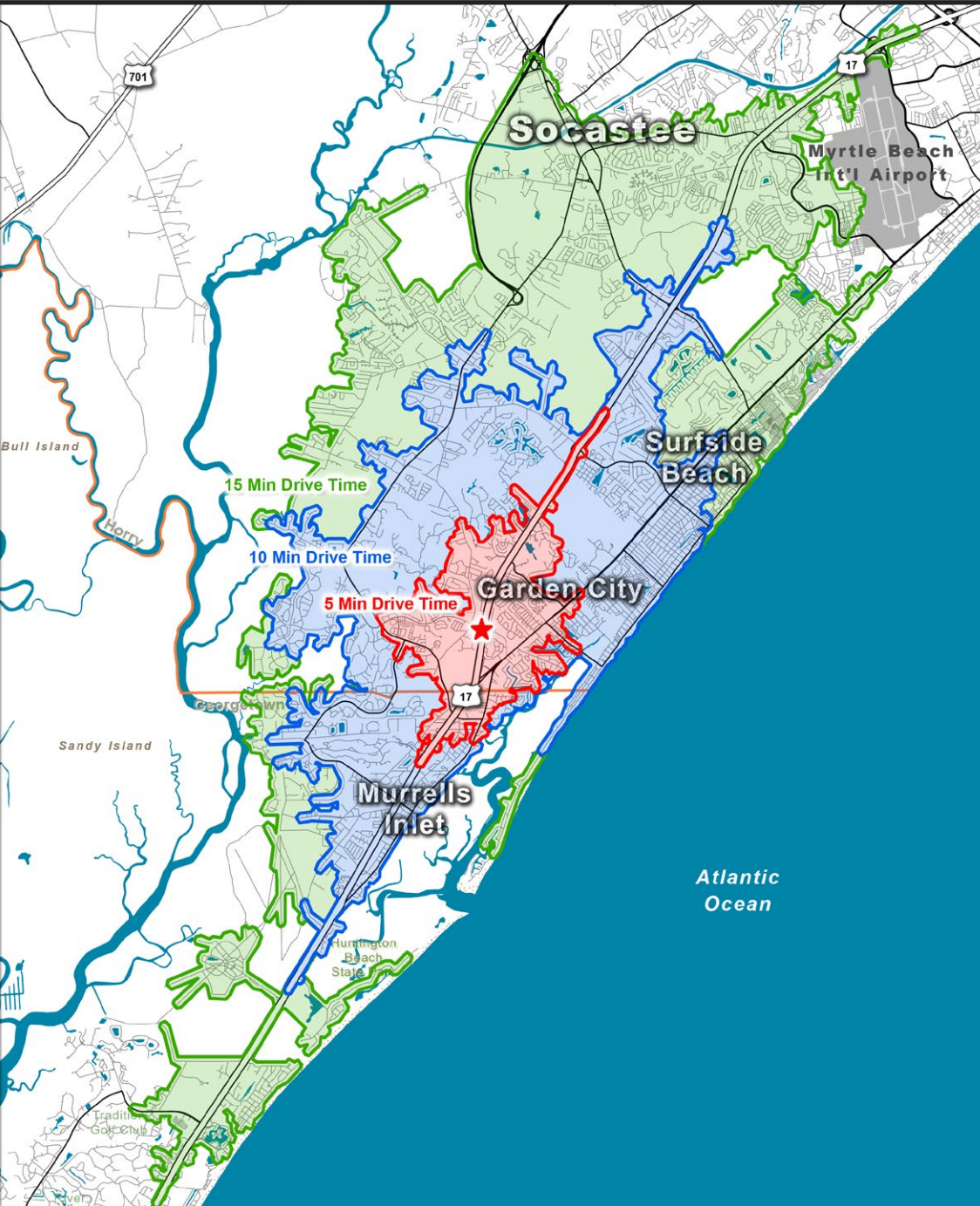
843.655.2251 | nbowers@paramountdevcorp.com

David E. Harner, CCIM

843.907.1415 | dharner@paramountdevcorp.com

INLET SQUARE REDEVELOPMENT

12125 US Highway 17 Bypass South | Murrells Inlet, SC 29576



2023 DEMOGRAPHICS

TOTAL POPULATION	5 MIN DRIVE TIME	14,352
	10 MIN DRIVE TIME	44,693
	15 MIN DRIVE TIME	72,978
2028 POPULATION	5 MIN DRIVE TIME	15,200
	10 MIN DRIVE TIME	47,153
	15 MIN DRIVE TIME	77,256
TOTAL EMPLOYEES	5 MIN DRIVE TIME	4,400
	10 MIN DRIVE TIME	11,431
	15 MIN DRIVE TIME	16,690
MEDIAN AGE	5 MIN DRIVE TIME	59.6
	10 MIN DRIVE TIME	56.7
	15 MIN DRIVE TIME	54.5
AVG HH INCOME	5 MIN DRIVE TIME	\$80,900
	10 MIN DRIVE TIME	\$82,360
	15 MIN DRIVE TIME	\$84,077
MEDIAN HOME VALUE	5 MIN DRIVE TIME	\$249,579
	10 MIN DRIVE TIME	\$257,295
	15 MIN DRIVE TIME	\$259,477



PARAMOUNT
DEVELOPMENT CORPORATION

K. Neal Bowers, CCIM

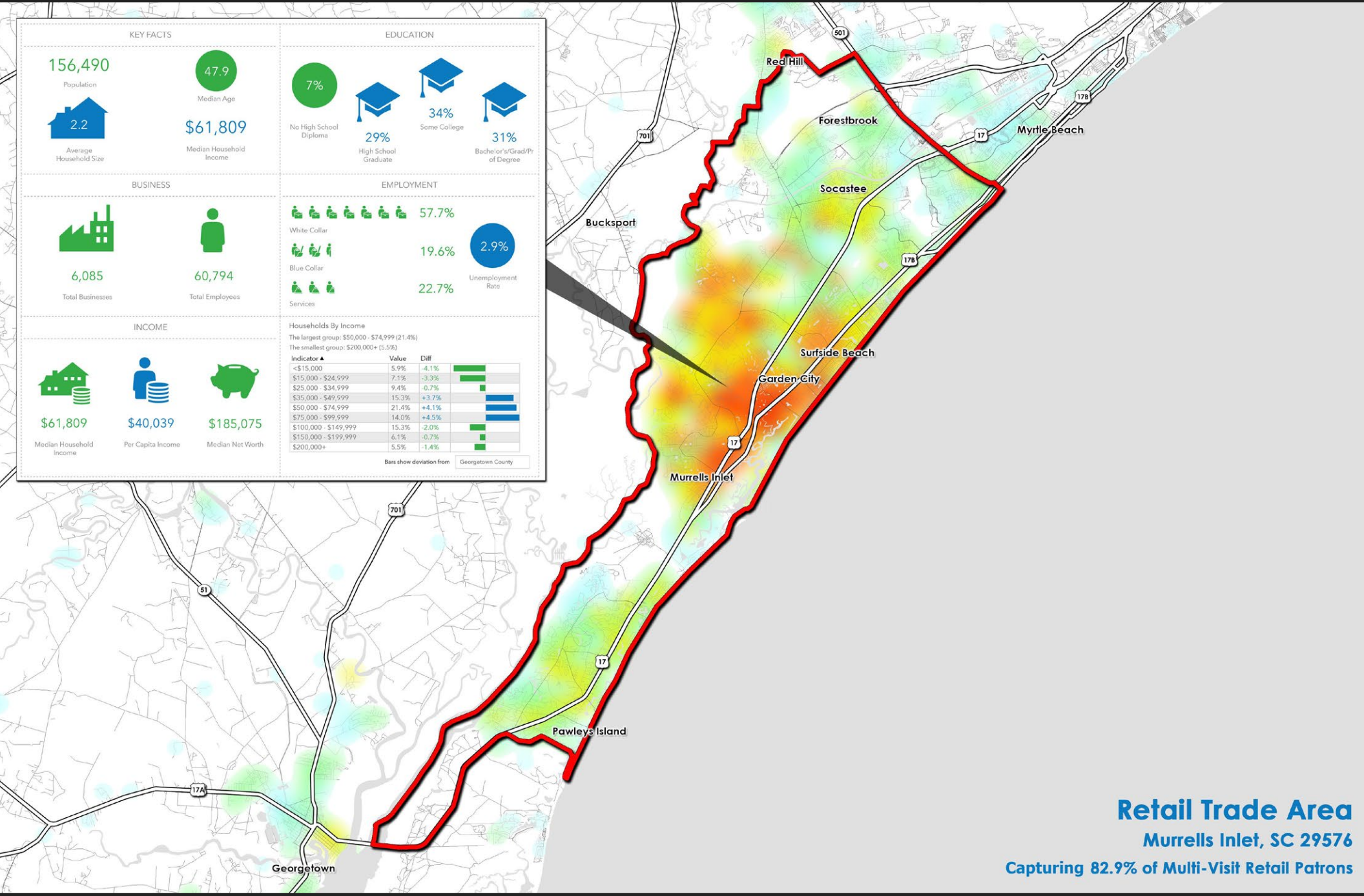
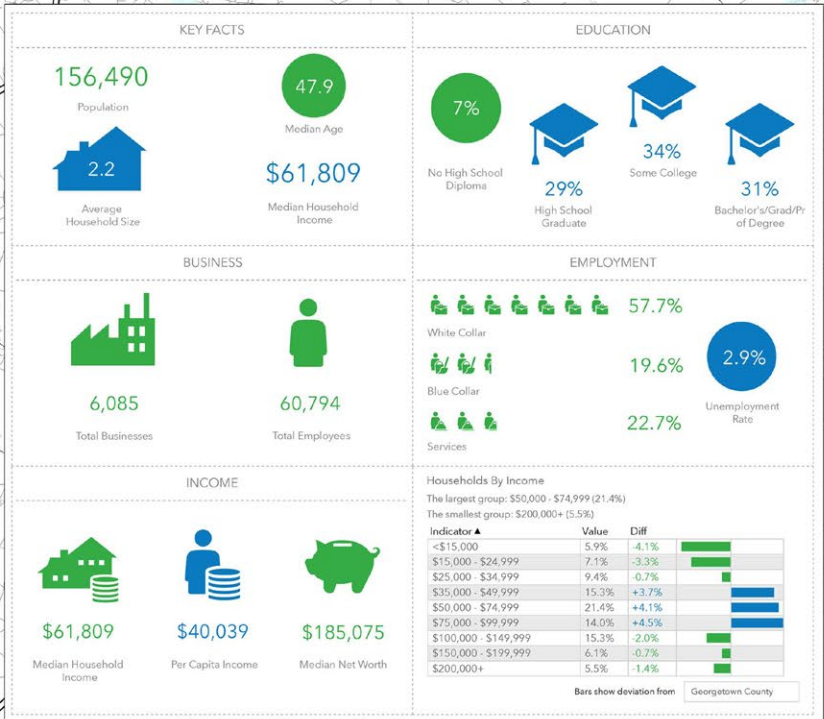
843.655.2251 | nbowers@paramountdevcorp.com

David E. Harner, CCIM

843.907.1415 | dharner@paramountdevcorp.com

INLET SQUARE REDEVELOPMENT

12125 US Highway 17 Bypass South | Murrells Inlet, SC 29576



Retail Trade Area
 Murrells Inlet, SC 29576
 Capturing 82.9% of Multi-Visit Retail Patrons



PARAMOUNT
 DEVELOPMENT CORPORATION

K. Neal Bowers, CCIM

843.655.2251 | nbowers@paramountdevcorp.com

David E. Harner, CCIM

843.907.1415 | dharner@paramountdevcorp.com