

# 149 West 27<sup>th</sup> Street

Between 6<sup>th</sup> and 7<sup>th</sup> Avenue

## OFFICE SPACE FOR LEASE



# 149 West 27<sup>th</sup> Street

## Chelsea | Full-Floor Office Space – 1,875 SF

Beautifully renovated **full-floor second-floor commercial space** available in the heart of Chelsea.

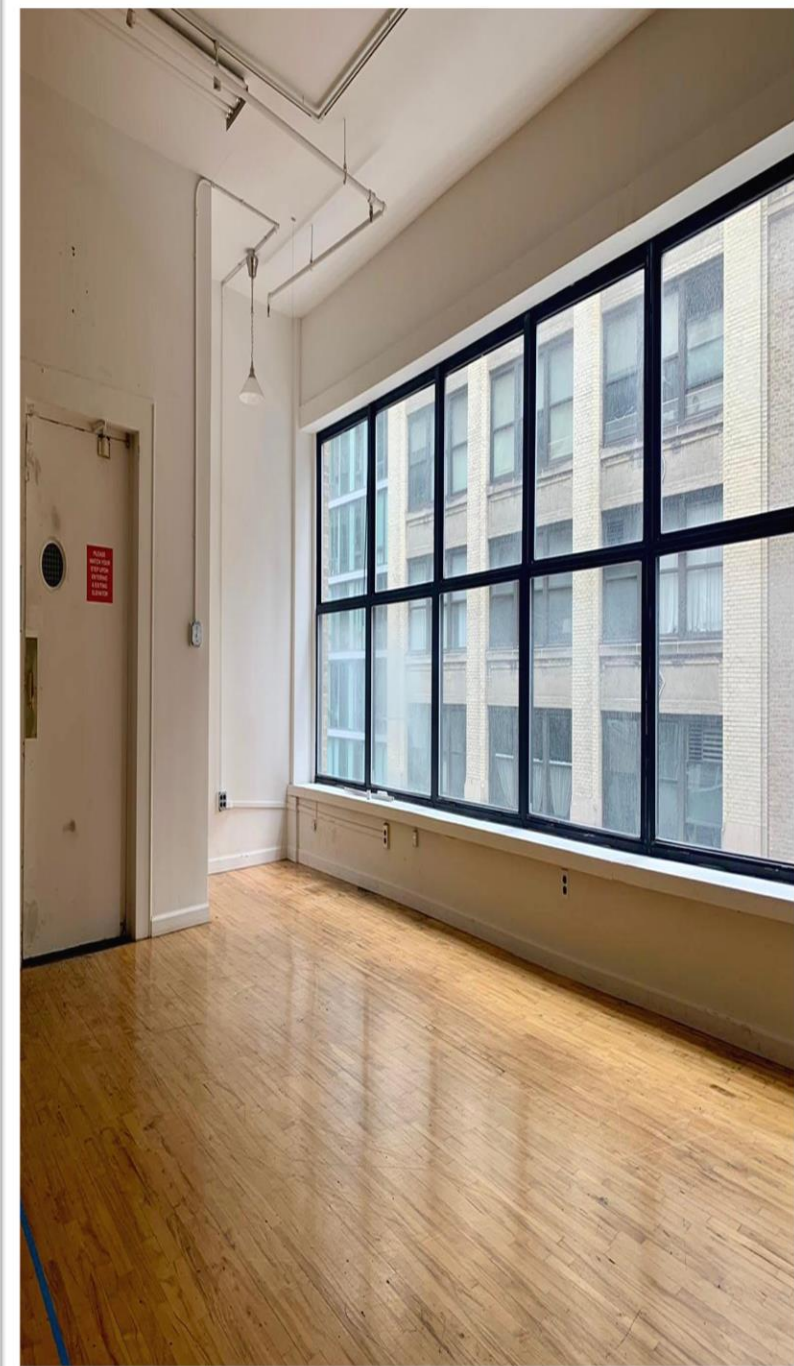
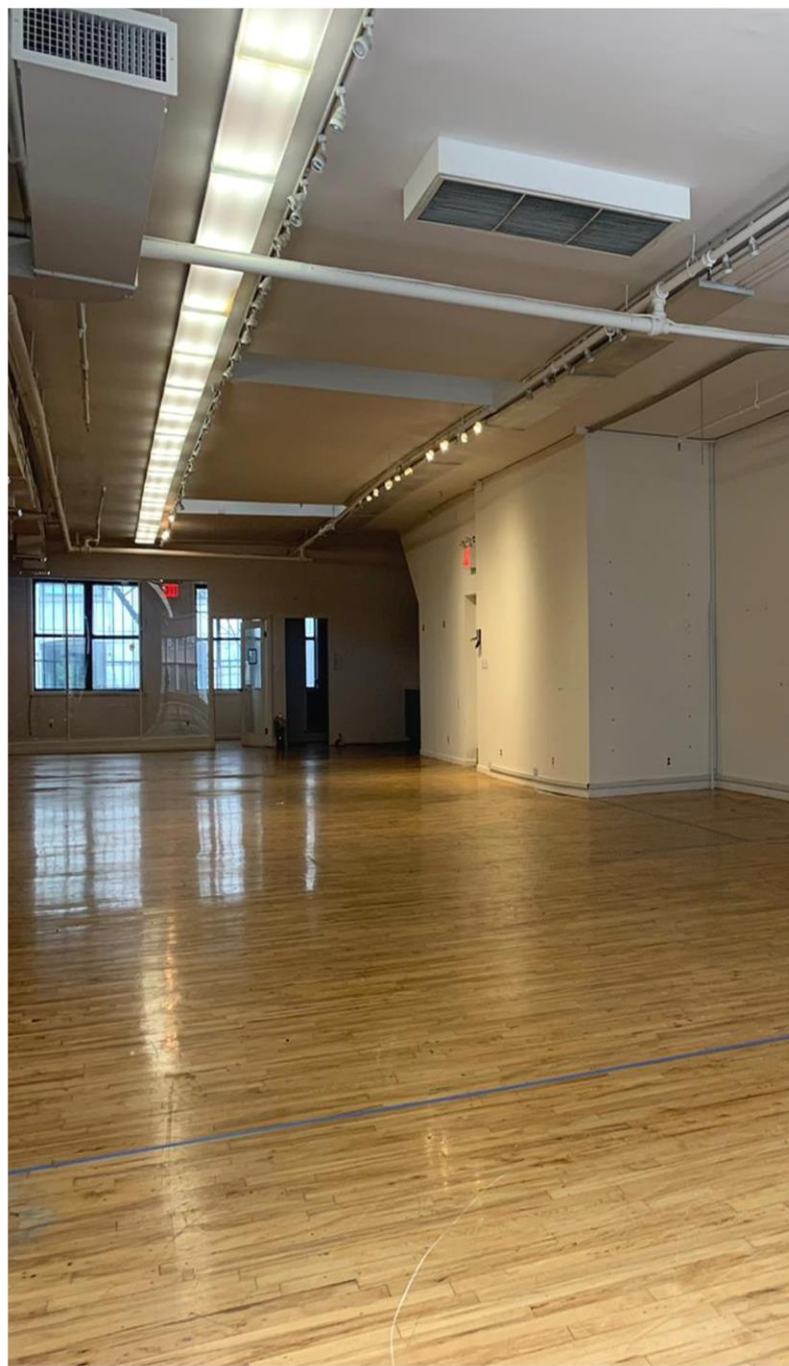
Features an open, flexible layout ideal for **showroom, creative office use, yoga, pilates, or dance studio.**





# 149 West 27<sup>th</sup> Street

- 1875 SF
- Full floor
- 12 FT Ceiling
- Open Floor Plan
- Perfect for Showroom / Creative Workspace / Yoga/ Dance / Pilates Studio
- Dedicated Changing rooms
- Key elevator
- Located in the Heart of Chelsea





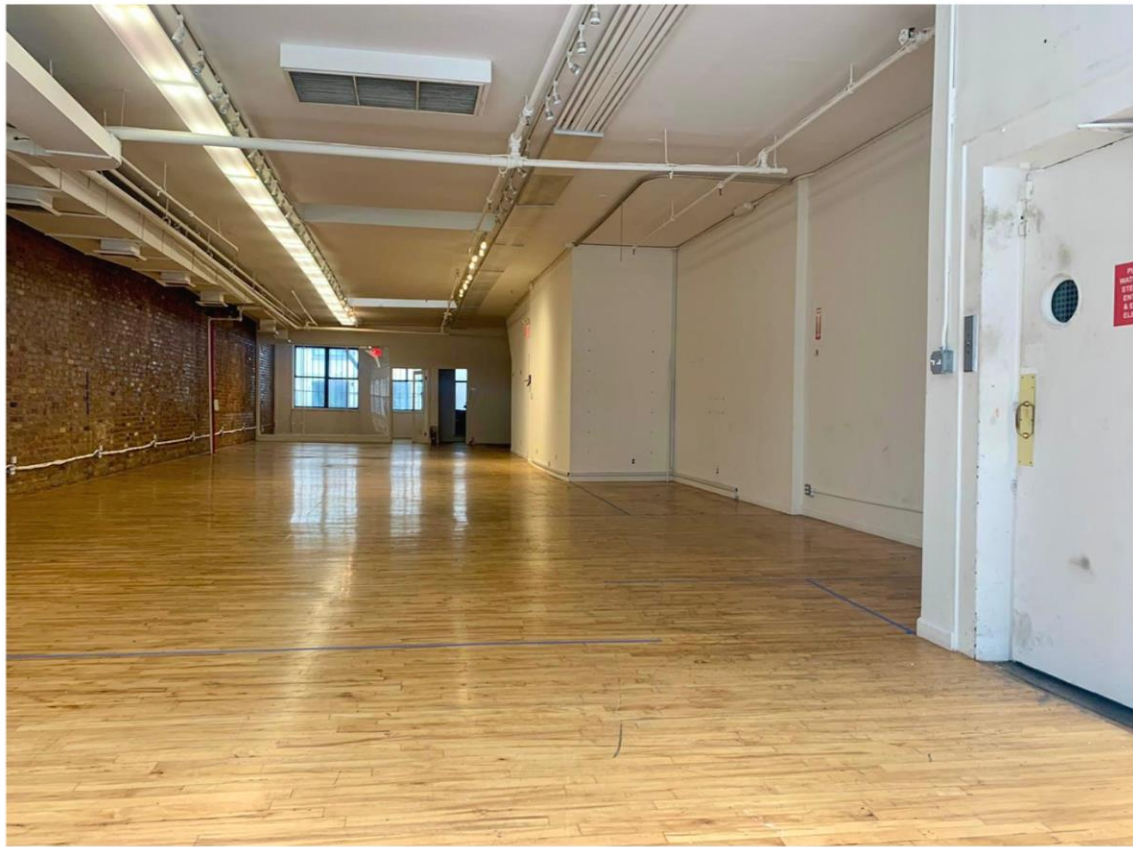
# 149 West 27<sup>th</sup> Street



**B.S.A. EQUITIES**  
REAL ESTATE INVESTMENT.BROKER



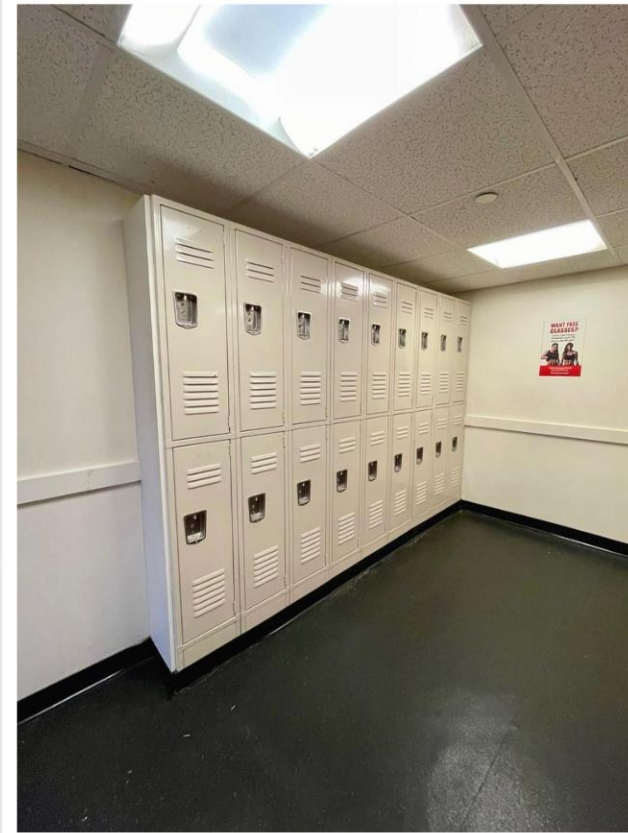
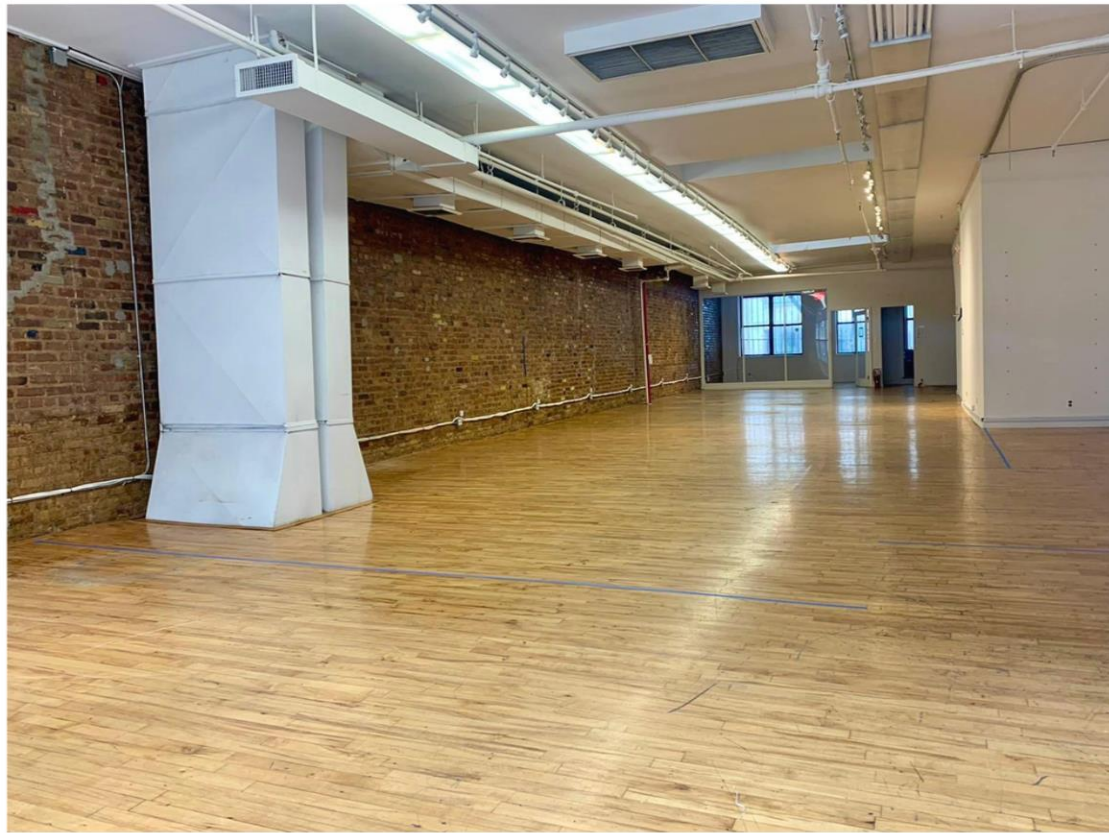
# 149 West 27<sup>th</sup> Street



**B.S.A. EQUITIES**  
REAL ESTATE INVESTMENT.BROKER

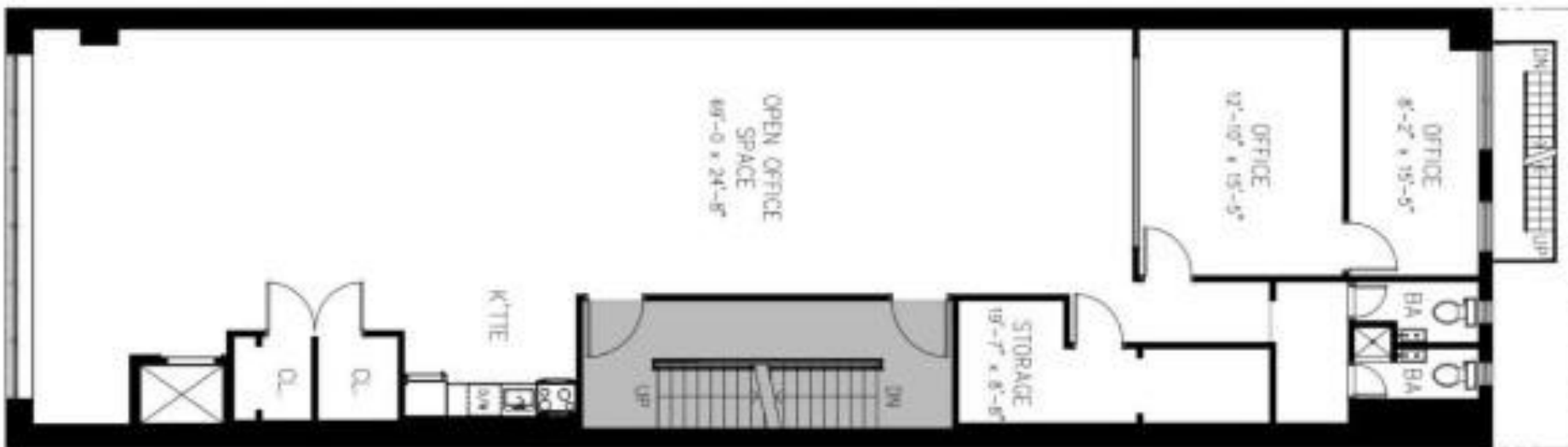


# 149 West 27<sup>th</sup> Street



**B.S.A EQUITIES**  
REAL ESTATE INVESTMENT.BROKER

*149 West 27<sup>th</sup> Street*



REAL ESTATE INVESTMENT.BROKER

# 149 West 27<sup>th</sup> Street

## Location:

- Prime Chelsea location
- Close to major transportation
- Convenient access to multiple subway lines
- High-visibility space in one of Manhattan's most desirable commercial corridors.

