

UP TO ±8,916 SF
LOW WILL COUNTY TAXES



SPECULATIVE OFFICE UNDERWAY, 60 DAY OCCUPANCY



18414 116TH AVENUE
ORLAND PARK, ILLINOIS - WILL COUNTY

Caroline A. Dell
Vice President
cdell@lee-associates.com
D 773.355.3035

Terry M. Grapenthin
Principal
tgrape@lee-associates.com
D 773.355.3042



All information furnished regarding property for sale, rental or financing is from sources deemed reliable, but no warranty or representation is made to the accuracy thereof and same is submitted to errors, omissions, change of price, rental or other conditions prior to sale, lease or financing or withdrawal without notice. No liability of any kind is to be imposed on the broker herein.

AVAILABLE FOR LEASE
18414 116TH AVENUE
ORLAND PARK, IL WILL COUNTY

BUILDING SPECIFICATIONS:

BUILDING SIZE: 24,575 SF

AVAILABLE: ±8,916 SF (divisible)

OFFICE: ±850 SF - Speculative
To Suit

CLEAR HEIGHT: 21'

LOADING:
› 1 shared exterior dock
› 6 drive-in doors

PARKING: 18 Car Spaces

POWER: 120 208 Volts, 3 Phase

LEASE PRICE: \$11.95 Net

COMMENTS:

- › Low Will County Taxes, Orland Park
- › Common Dock
- › New speculative office under construction
- › Triple Catch Basin drains
- › Drive through capability
- › Easily accessible to I-80 via full interchange at LaGrange Road
- › Nearby dining, shopping amenities
- › 1.8 Miles to 179th Street Metra Station

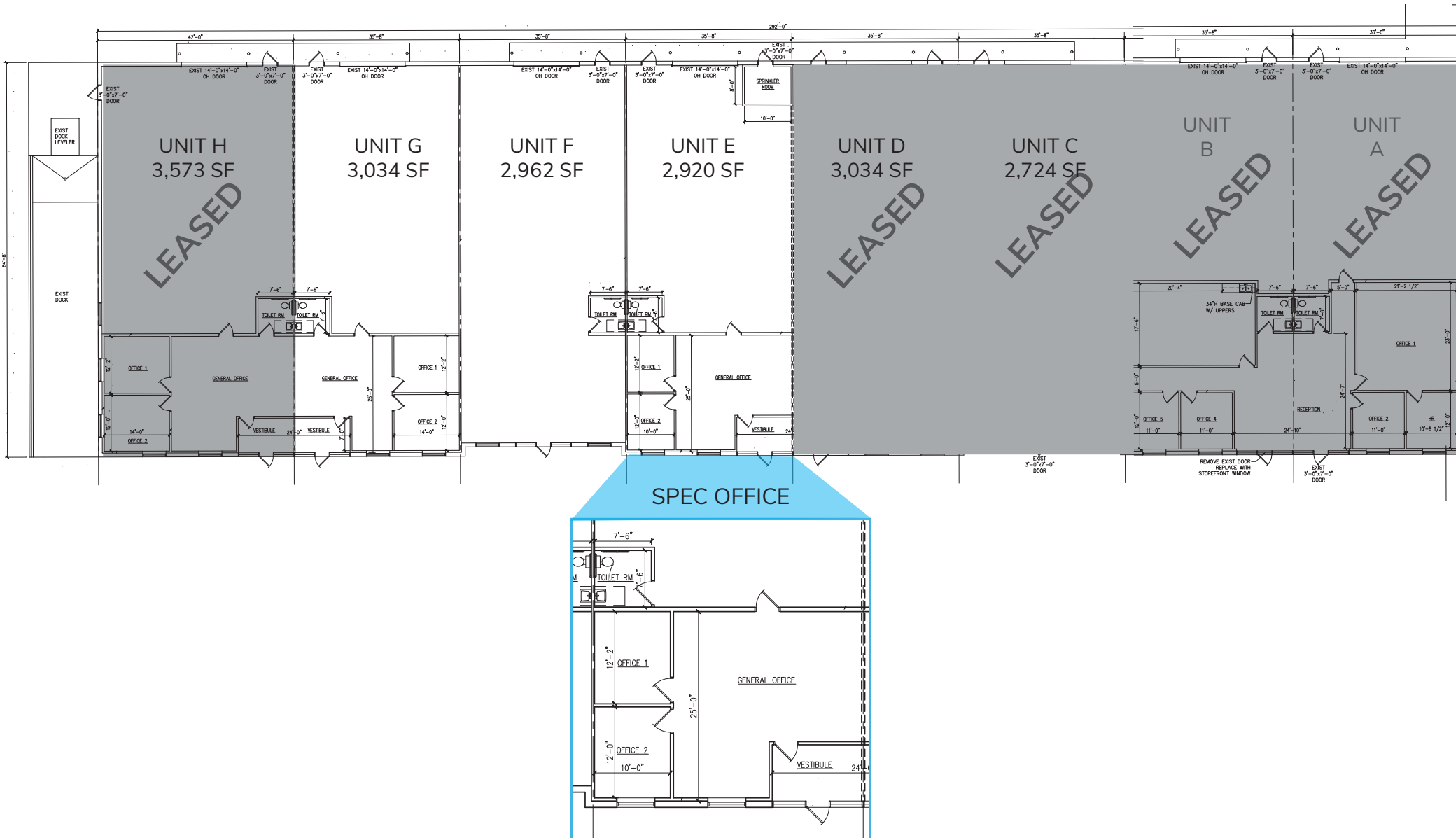


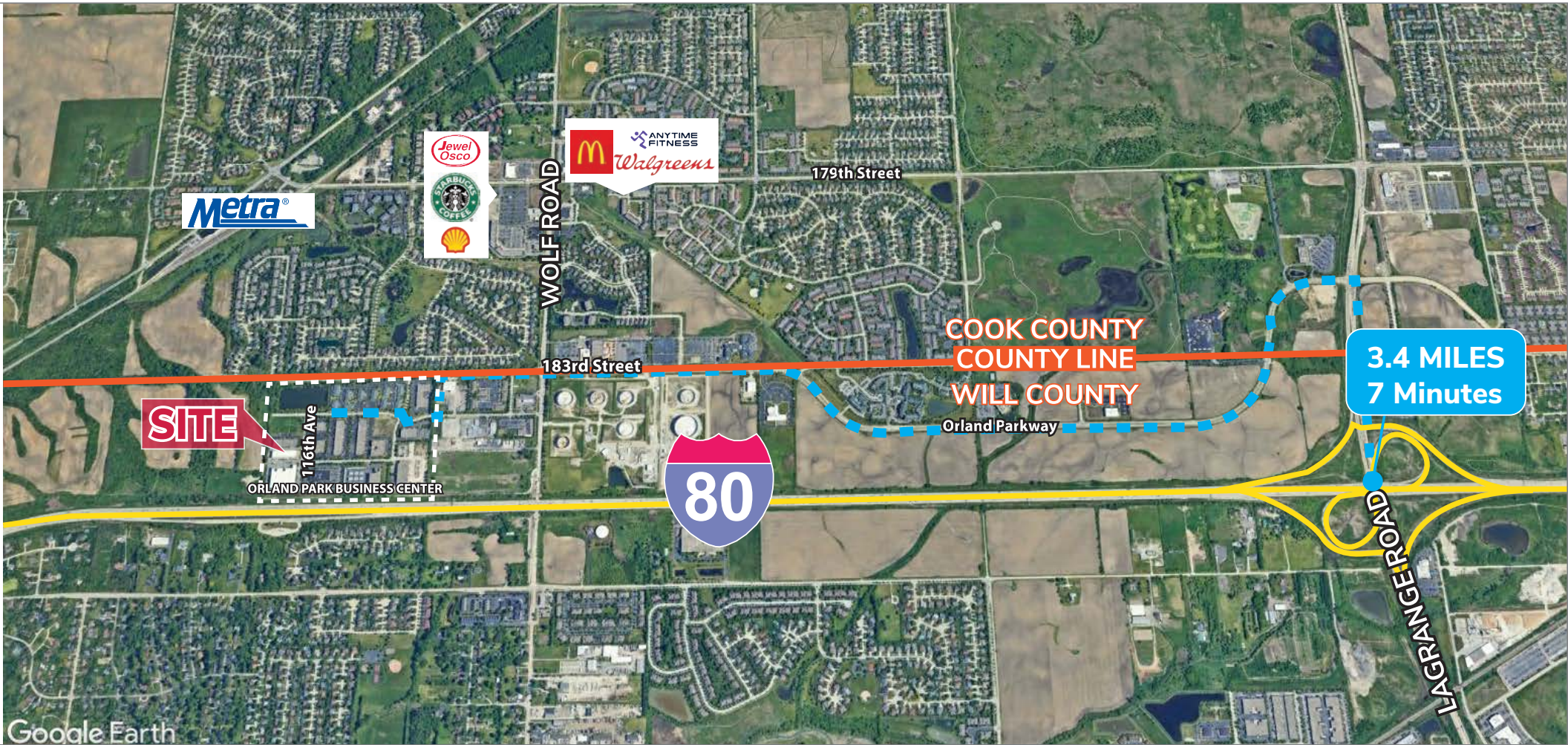
SPECULATIVE OFFICE UNDERWAY



AVAILABLE FOR LEASE
18414 116TH AVENUE
ORLAND PARK, IL WILL COUNTY

BUILDING PLAN





Caroline A. Dell
Vice President
cdell@lee-associates.com
D 773.355.3035

Terry M. Grapenthin
Principal
tgrape@lee-associates.com
D 773.355.3042



All information furnished regarding property for sale, rental or financing is from sources deemed reliable, but no warranty or representation is made to the accuracy thereof and same is submitted to errors, omissions, change of price, rental or other conditions prior to sale, lease or financing or withdrawal without notice. No liability of any kind is to be imposed on the broker herein.