

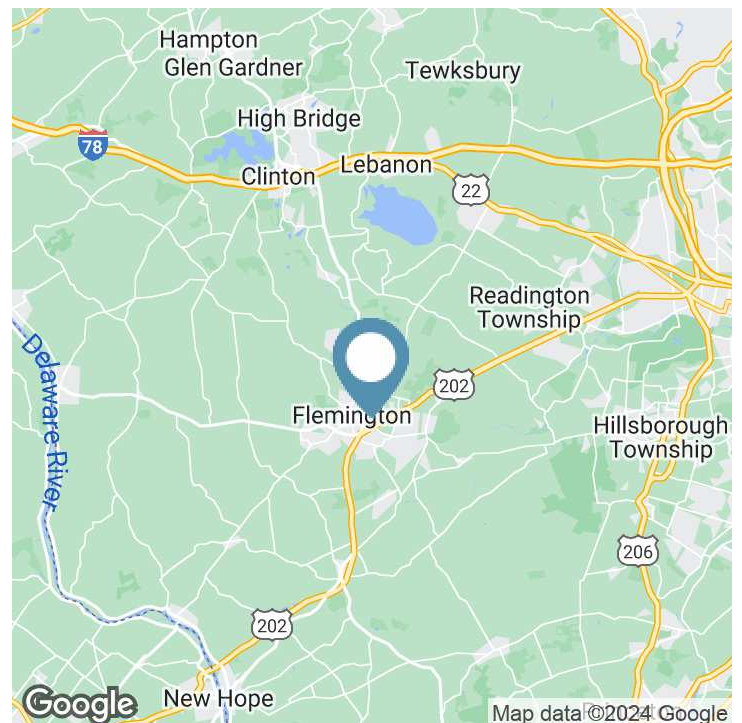
FOR LEASE | Flemington Trade Center | 23 Royal Road | Flemington, NJ 08822

# 670 SF CLASS "A" OFFICE SPACE



## PROPERTY HIGHLIGHTS

- **Class A** office building, built in 2005
- 29,000 SF total
- **670 SF Available Now; Adjoining 1,500 SF Available 3Q 2025**
- 3 offices, conference room and reception area – 1,500 SF
- Large office/conference room and reception area – 670 SF
- Available in 30 days
- **Asking Rent: \$24.00/SF plus electric, gas and cleaning**
- Amenities include beautifully appointed lobbies, elevator, spiral staircase, conference/training facilities, cafeteria-kitchen with outdoor seating and secure building access
- Abundant parking
- **Location:** This building is located just north of Church Street between Routes 202 and 31, minutes from shopping, restaurants and downtown.



**PETER WISNIEWSKI**  
Executive Vice President  
908.360.8052  
pwisniewski@kislakrealty.com

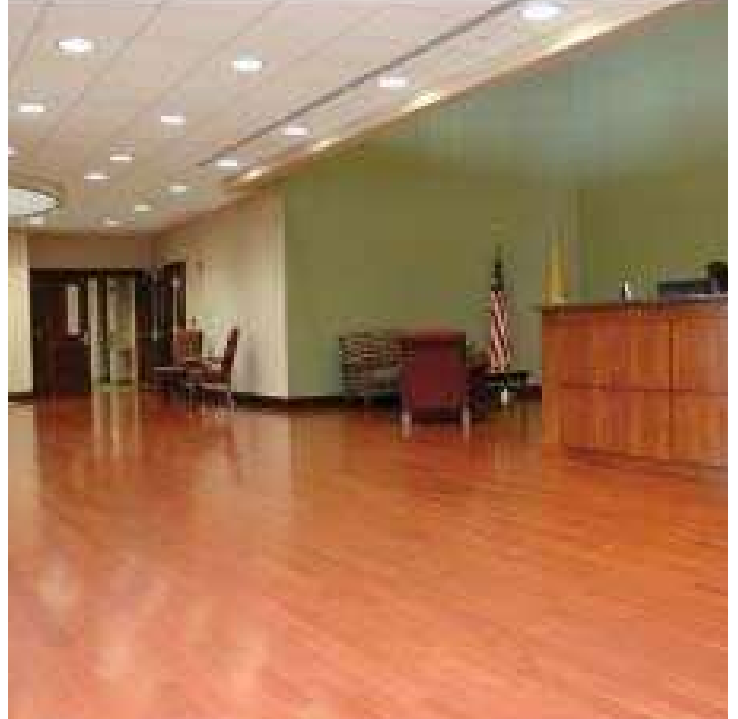


**SARA SOLIMAN**  
Sales & Leasing Associate  
908.360.8051  
ssoliman@kislakrealty.com

Kislak Commercial Real Estate Services, Inc.  
100 Woodbridge Center Drive  
Woodbridge, NJ 07095  
908.360.8050 | kislakrealty.com

Flemington Trade Center | 23 Royal Road | Flemington, NJ 08822

# COMMON AREAS



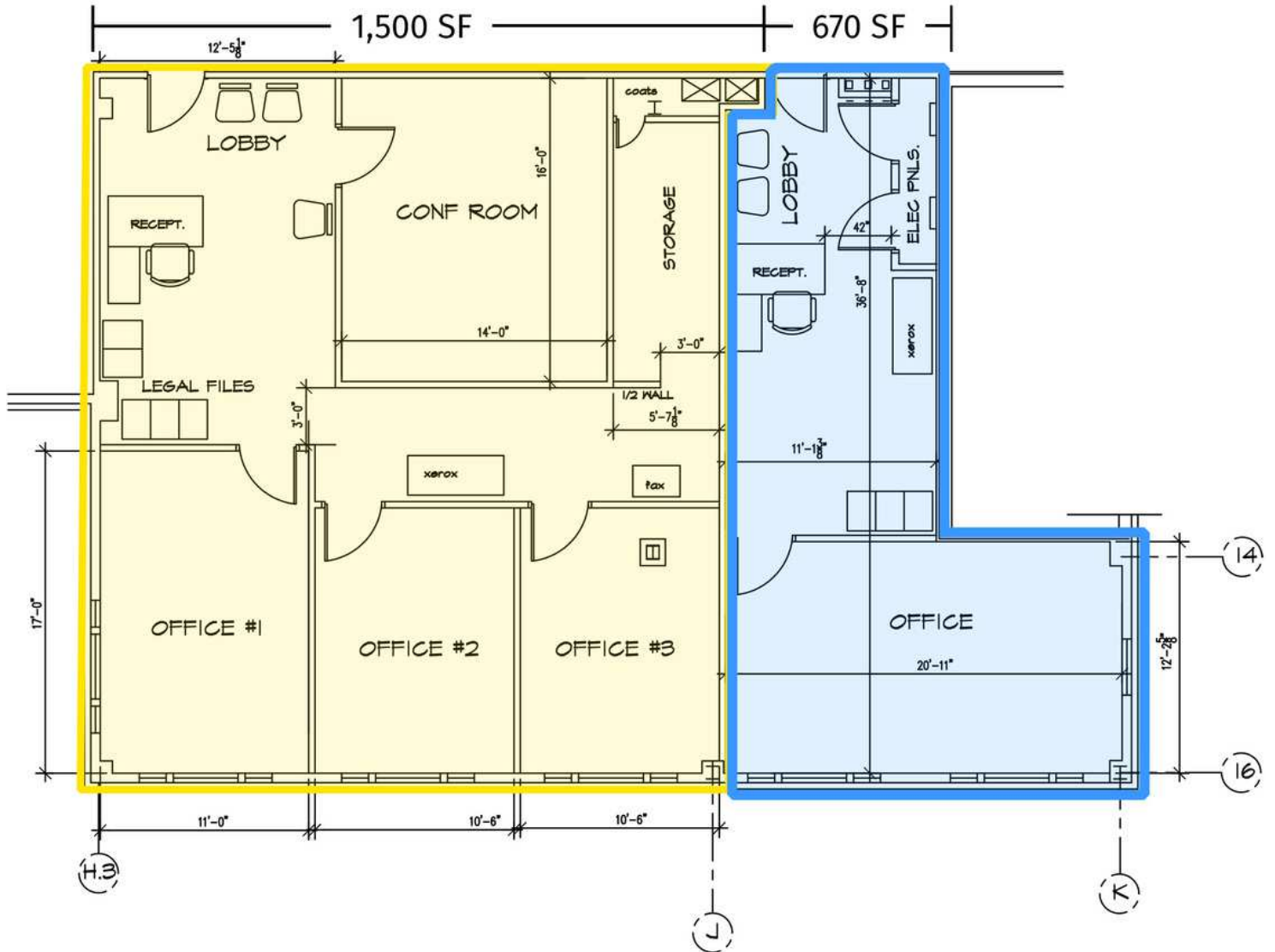
**PETER WISNIEWSKI**  
Executive Vice President  
908.360.8052  
pwisniewski@kislakrealty.com

**SARA SOLIMAN**  
Sales & Leasing Associate  
908.360.8051  
ssoliman@kislakrealty.com

Kislak Commercial Real Estate Services, Inc.  
100 Woodbridge Center Drive  
Woodbridge, NJ 07095  
908.360.8050 | kislakrealty.com

Flemington Trade Center | 23 Royal Road | Flemington, NJ 08822

# FLOOR PLAN



## EXISTING SECOND FLOOR PLAN- NEW OFFICES Concept Plan#1 (2,170 SF)

SCALE : 1/8" = 1'-0"

12-18-09

**PETER WISNIEWSKI**     **SARA SOLIMAN**  
Executive Vice President     Sales & Leasing Associate  
908.360.8052     908.360.8051  
pwisniewski@kislakrealty.com     ssoliman@kislakrealty.com

Kislak Commercial Real Estate Services, Inc.  
100 Woodbridge Center Drive  
Woodbridge, NJ 07095  
908.360.8050 | kislakrealty.com