

# Field Club Commons

3300-3350 Wilmington Road  
New Castle, PA 16105

## High-Traffic Shopping Center in New Castle



## Property Information

- + Available spaces:
  - 3,794 SF in-line space
  - 5.35 AC available for development
- + Anchor tenants include Dollar General, Save-A-Lot, Bealls Outlet, and Ollie's Bargain Outlet
- + Co-tenants include Applebee's, Great Clips, Subway, Jiffy Lube, and others
- + Adjacent to Giant Eagle, Wendy's, and Arby's
- + Located in Neshannock Township with easy access to I-376
- + Over 18,000 cars pass daily, one of the highest non-interstate counts in Lawrence County

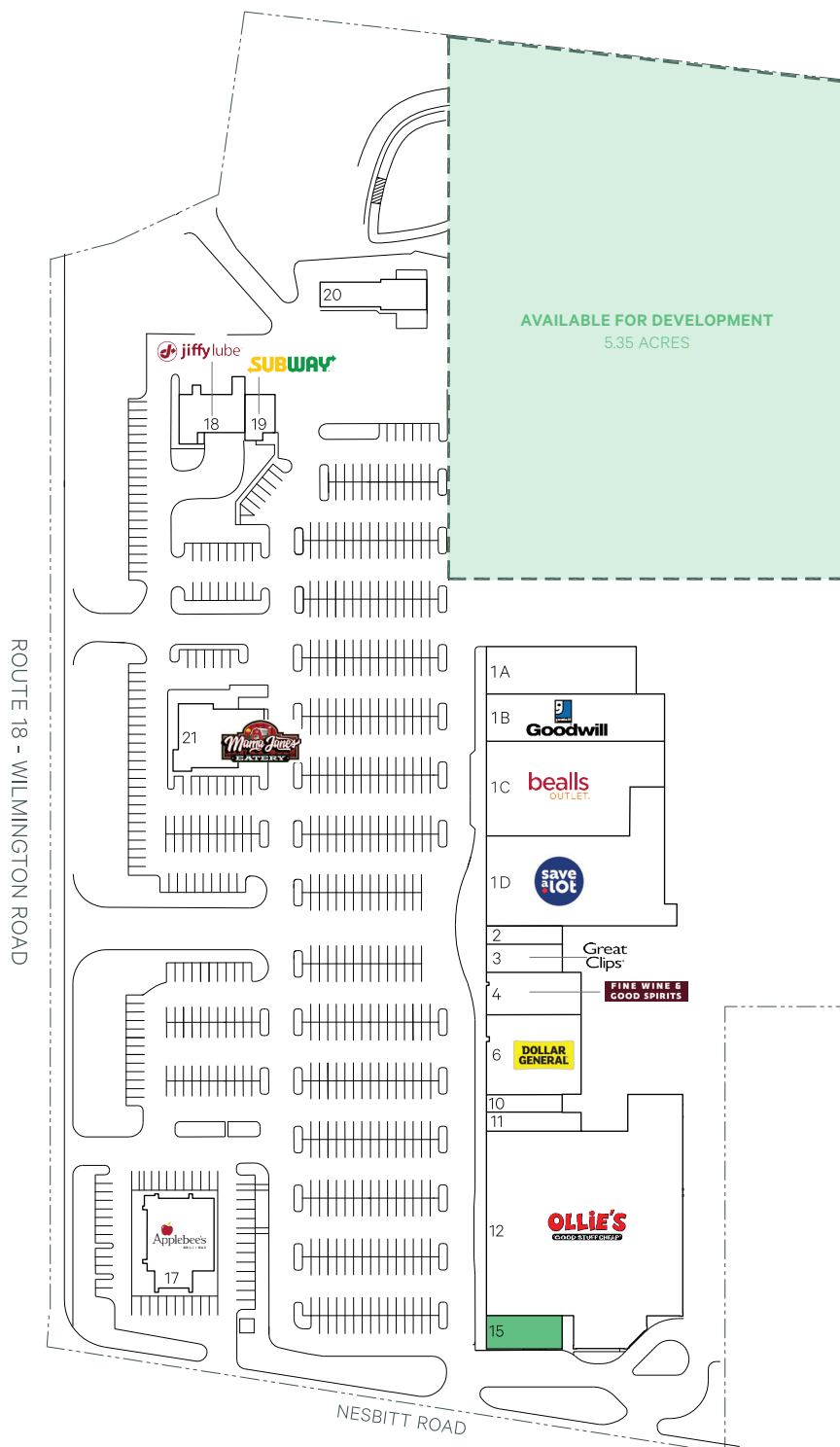
## Field Club Commons

3300-3350 Wilmington Road | New Castle, PA 16105

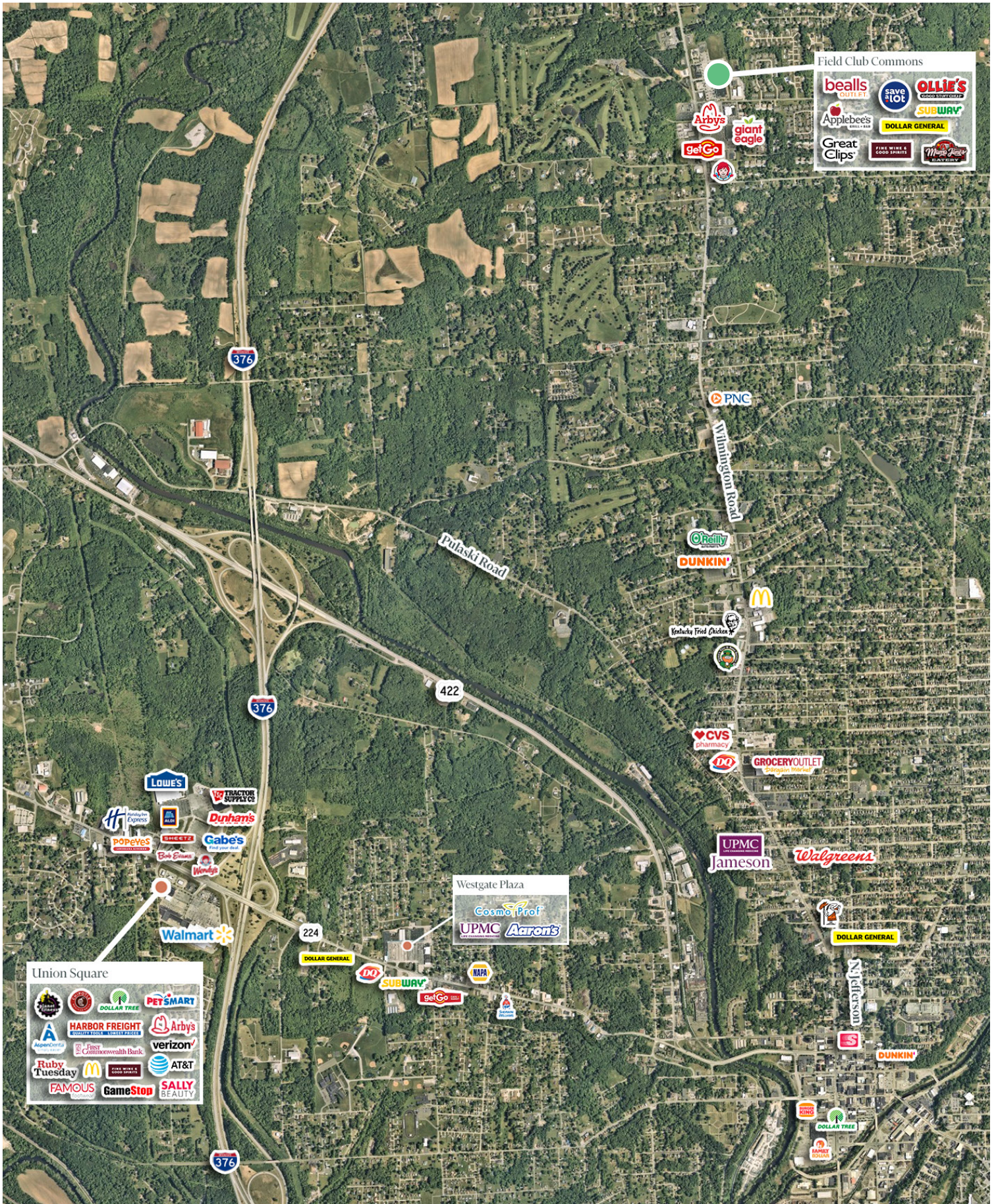
For Lease

## Site Plan

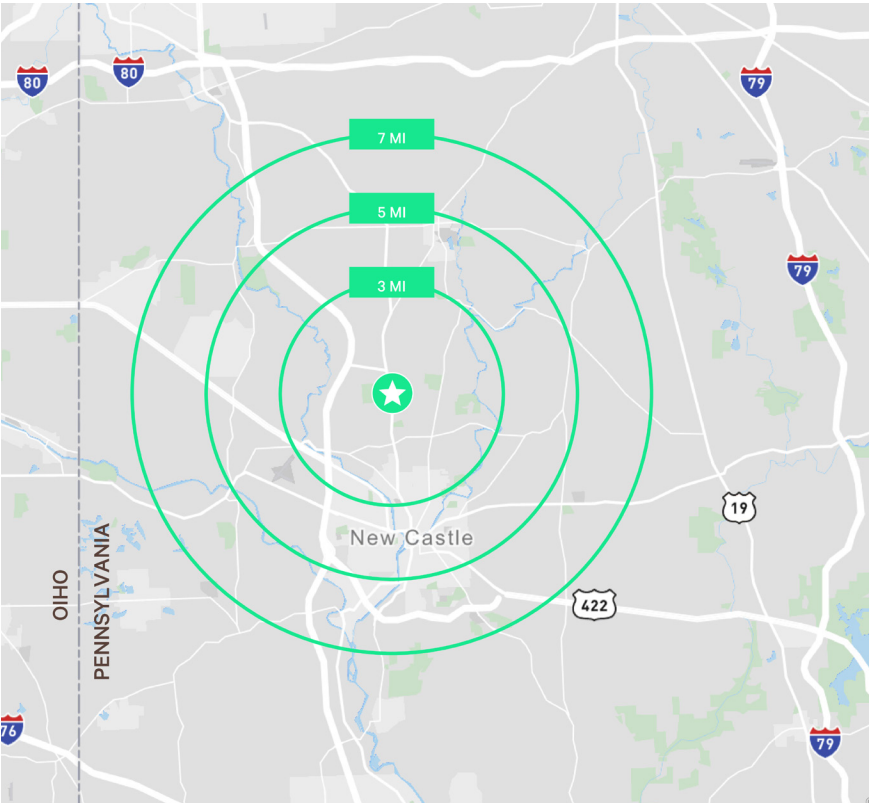
Unit	Tenant Name	Sq. Ft.
1A	McBride Beer	6,307
1B	Goodwill	7,974
1C	Bealls Outlet	16,715
1D	Save-A-Lot	20,018
2	Smoke Shop	1,600
3	Great Clips	2,400
4	Fine Wine & Good Spirits	4,149
6	Dollar General	8,400
10	Lacquer Nail Bar	1,600
11	Sim's Restaurant	2,000
12	Ollie's Bargain Outlet	45,084
15	AVAILABLE	3,794
17	Applebee's	6,306
18	Jiffy Lube	3,317
19	Subway	1,355
20	E-Z Kleen Car Wash	3,222
21	Mama Jane's Eatery	4,579











2024 Demographics	3 MILES	5 MILES	7 MILES
Population	14,508	39,159	54,208
Daytime Population	16,422	42,932	56,456
Households	6,312	16,457	22,729
Average Household Income	\$105,438	\$80,370	\$80,219

Contact Us

**Jake Gold**  
Senior Associate  
+1 412 394 983  
jake.gold@cbre.com  
Retail Contact

**Robert Gold, CCIM**  
First Vice President  
+1 412 316 2397  
robert.gold@cbre.com  
Retail Contact

**Melissa Maggi**  
Vice President  
+1 412 995 3818  
melissa.maggi@cbre.com  
Land Contact

© 2025 CBRE, Inc. All rights reserved. This information has been obtained from sources believed reliable, but has not been verified for accuracy or completeness. You should conduct a careful, independent investigation of the property and verify all information. Any reliance on this information is solely at your own risk. CBRE and the CBRE logo are service marks of CBRE, Inc. All other marks displayed on this document are the property of their respective owners, and the use of such logos does not imply any affiliation with or endorsement of CBRE. Photos herein are the property of their respective owners. Use of these images without the express written consent of the owner is prohibited.