

The Hideout: Elite Motor Storage

@ Naples Big Cypress Storage and Industrial Park



STORAGE CONDOMINIUMS

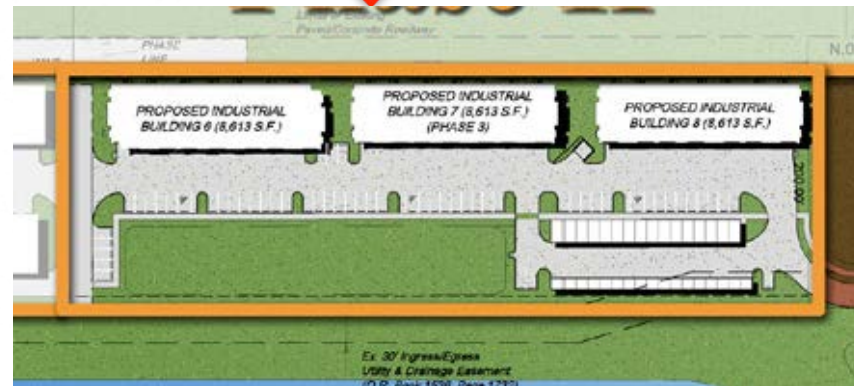
A Storage Facility Worthy Of Your Possessions.

- RVs/Motor Coaches
- Automobiles/Classic Cars
- Trailers / Boats
- Other Valuables



- New Construction – concrete block
- Gated and secured entrance
- Camera monitoring
- Large electric overhead doors
- Options: A/C, loft areas, bathrooms
- On-site dump station
- Adjacent outdoor and mini storage

Site Plan



Site Perspective

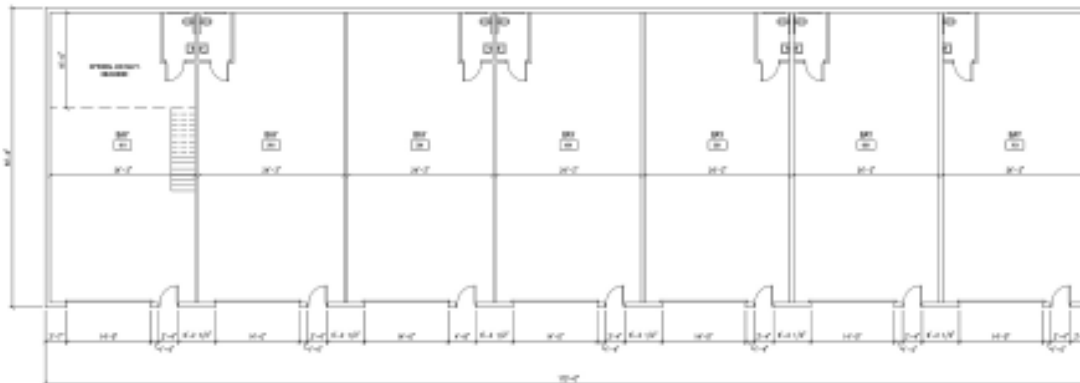


Unit Details



3 Condo-Storage Building (7 Units per Building)

- Each Unit 25' x 55'.
- Height: 20' at Eave; 23' at Ridge.
- Overhead Doors: 14' x 14' Electric .
- Pedestrian Door.
- Bathroom.
- Options for Each Unit (See Option Page).



Mini-Storage (16 Units)

- 16 Units 10' x 25'
- Overhead Doors: 8' x 10'

Options



- Upgraded Lighting
- Loft Area: 15' D x 25' W
- Air Conditioning
- Flooring Upgrades
- Cabinetry

The above photo represents an illustration of what a unit may look like. Actual unit may deviate slightly from the illustration.

Location



Located 4-miles east of the intersection of US 41 (East Tamiami Trail) and Collier Blvd. (State Rd. 951). Convenient to Marco Island and the Collier Blvd/US41 corridor.

195 Basik Drive, Naples, FL 34145

Contact

For Pricing and Information:

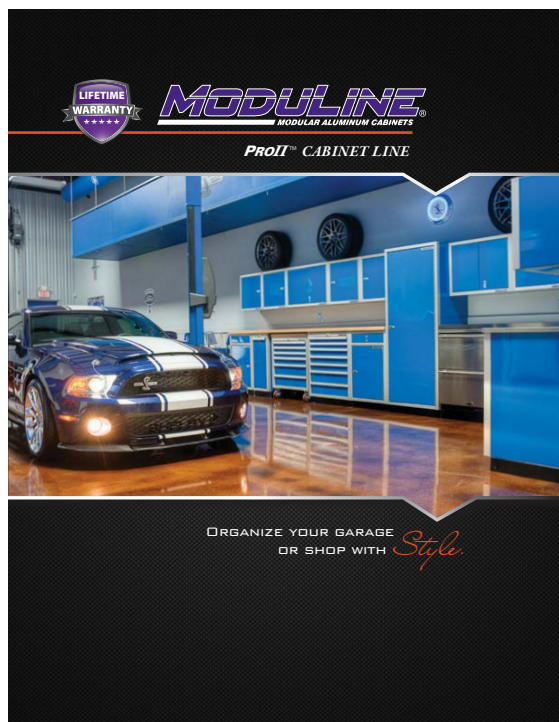
Keith Basik at NBC Land Holdings, LLC

Keith.basik@gmail.com

239-272-4643

Option: Cabinet Line

The Hide Out: Elite Motor Storage is a direct dealer of **Moduline**—one of the nations top-tier modular aluminum cabinet companies. This high-end product is made in the US and can be customized to your liking.



Pricing is not included in the base price of the condo-storage unit and will be determined upon final design package.

<https://www.modulinecabinets.com/>

Option: Loft Area

Standard Mezzanine Package

- Construction Documents and Permits, Signed and Sealed Construction Drawings and Building Permit

Mezzanine Dimensions

- Size: 25'-4" Wide x 15'-5" Deep x 108" +/- above finished floor, under mezzanine ceiling height: 93" +/- above finished floor

Concrete Deck

- 2" – 4,000-psi cast-in-place concrete with trowel finish ready to accept tile, wood, or vinyl flooring

Mezzanine Railing

- Aluminum picket style railing with black paint finish

Stairs and Wall Railing Aluminum

- Aluminum welded construction Open stair risers
- Mill finish treads and stringers with a swirl finish Black painted railings

Electrical Package

- One (2) duplex outlet; Two (2) lights under mezzanine with switch
- One (1) Junction box on mezzanine for a light with three (3) way switch One (1) Emergency Light Package

Finishes

- Drywall on side support walls and underside of mezzanine with spray knock-down trowel texture and primer finish

Standard Mezzanine package price:

Additional Upgrades: Mezzanine Cable Railing with black aluminum posts and handrail
Stair Cable Railing with black aluminum posts and handrail

Included: Bathroom

Standard Restroom Package

- Framing, drywall, spray knock-down texture, with primer finish
- Hollow core wood door and hardware package
- Rough and finish plumbing for sink and toiler
- Rough and finish electrical for exhaust fan, light over vanity, and One (1) GFI wall outlet
- Installation of one (1) Fire sprinkler head
- Ventilation exhaust fan including PVC exhaust pipe and roof penetration
- Installation of owner supplied water closet, vanity, sink, light fixture, mirror, accessories.

Standard restroom package