

46321-46365

Five Mile Rd

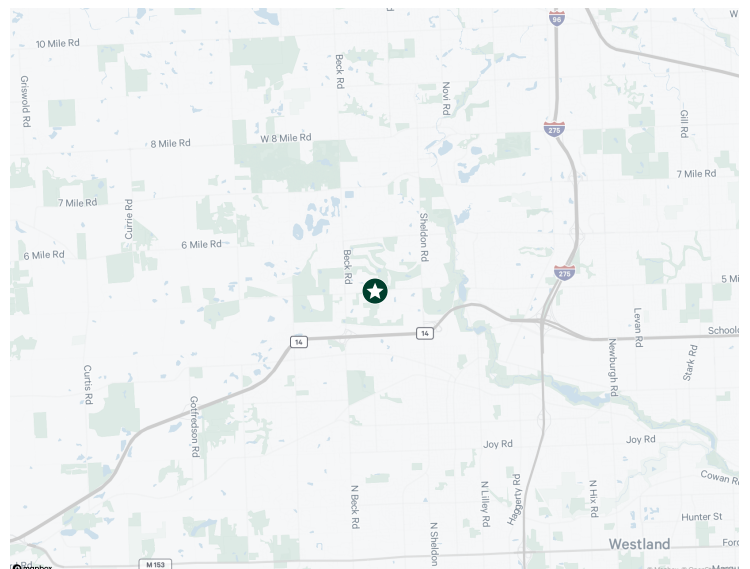
Plymouth, MI

Office/Flex Building With Flex Capability



Property Includes

- + 11,000 SF Available
- + One (1) Grade Level Door
- + Open Concept With Private Offices & Conference Rooms
- + Fronts On Five Mile Rd Between Sheldon & Beck Roads
- + Many Amenities Nearby
- + \$10.95 NNN



46321-46365 Five Mile Rd
Plymouth, MI

For Lease

Property Aerial



Contact Us

Michael Balow

Vice President

+1 248 351 2009

michael.balow@cbre.com

© 2024 CBRE, Inc. All rights reserved. This information has been obtained from sources believed reliable but has not been verified for accuracy or completeness. CBRE, Inc. makes no guarantee, representation or warranty and accepts no responsibility or liability as to the accuracy, completeness, or reliability of the information contained herein. You should conduct a careful, independent investigation of the property and verify all information. Any reliance on this information is solely at your own risk.

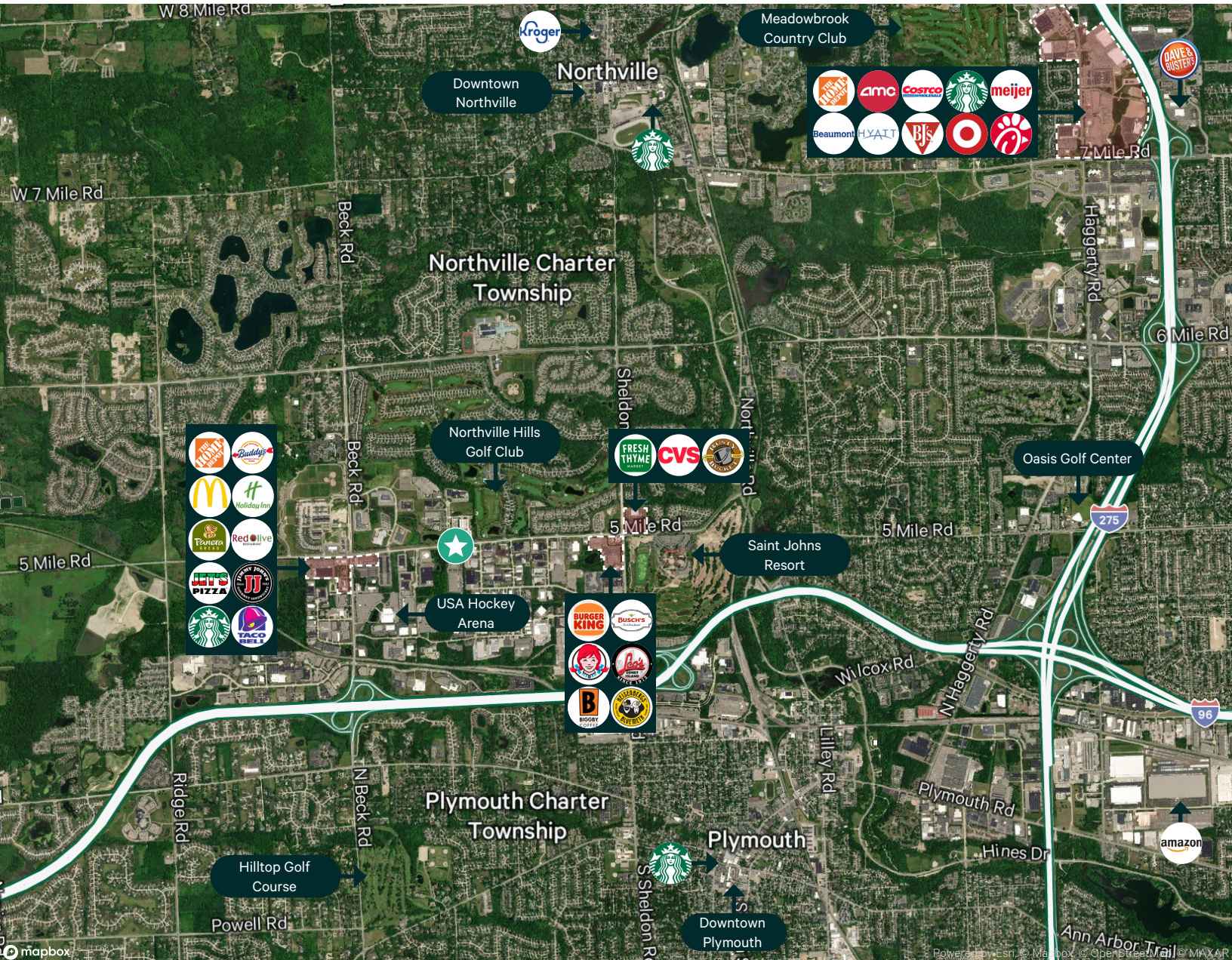
www.cbre.com/detroit

CBRE

46321-46365 Five Mile Rd
Plymouth, MI

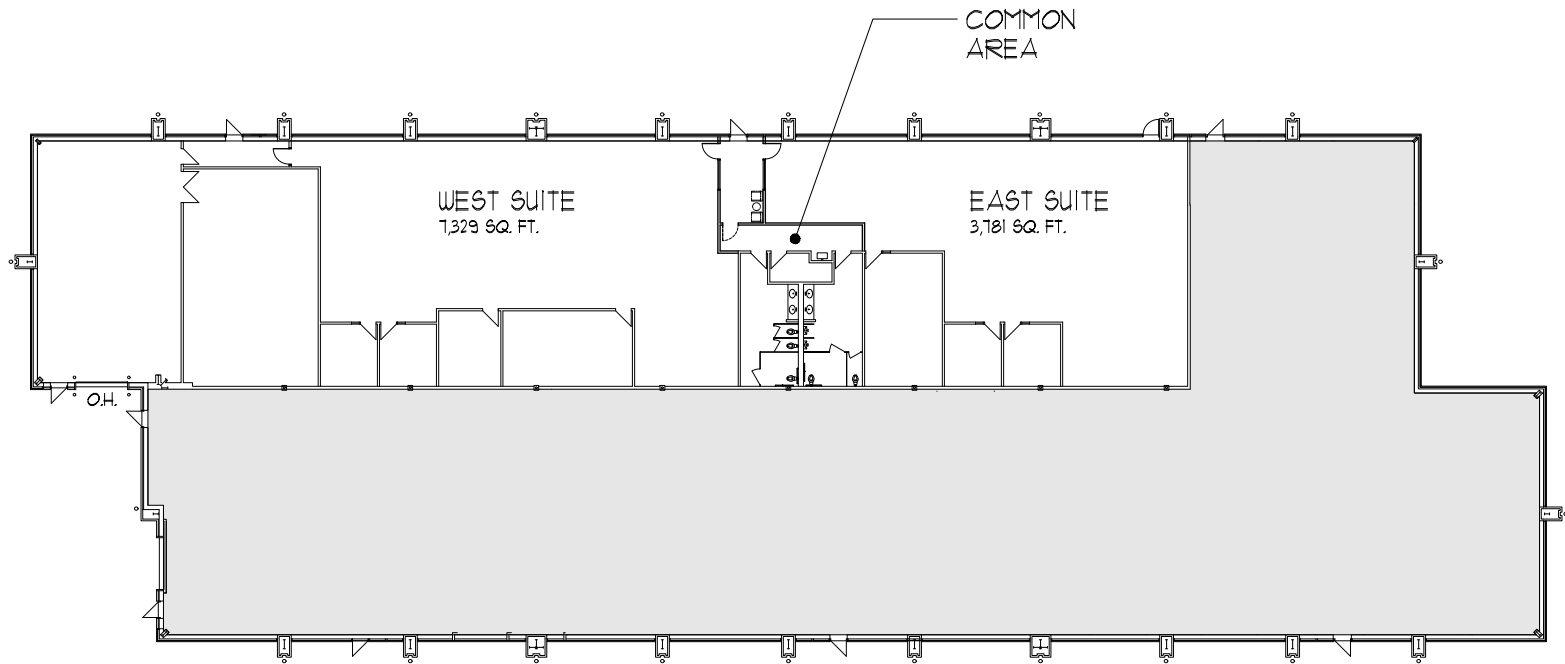
For Lease

Local Aerial



© 2024 CBRE, Inc. All rights reserved. This information has been obtained from sources believed reliable but has not been verified for accuracy or completeness. CBRE, Inc. makes no guarantee, representation or warranty and accepts no responsibility or liability as to the accuracy, completeness, or reliability of the information contained herein. You should conduct a careful, independent investigation of the property and verify all information. Any reliance on this information is solely at your own risk.

Floor Plan



Space is offered as one contiguous suite, or either of two smaller suites as drawn

Contact Us

Michael Balow

Vice President

+1 248 351 2009

michael.balow@cbre.com

© 2024 CBRE, Inc. All rights reserved. This information has been obtained from sources believed reliable but has not been verified for accuracy or completeness. CBRE, Inc. makes no guarantee, representation or warranty and accepts no responsibility or liability as to the accuracy, completeness, or reliability of the information contained herein. You should conduct a careful, independent investigation of the property and verify all information. Any reliance on this information is solely at your own risk.

Property Overview

Available Space:	11,000 SF	Divisible:	Yes
County:	Wayne	Additional Space Available:	No
Parking:	147 Surface 5.6/1,000	Floors:	1
Developed Space:	Yes	Year Built:	2000
Lease Rate:	\$10.95 NNN	Minimum Term:	Flexible
		Available:	Immediately

Comments

- + Up to 11,000 sf available
- + Building is in move-in condition
- + Garage/lab space with grade level door
- + Property has immediate access to M-14 via sheldon or Beck Rds
- + Multiple hotels, retailers, and restaurants in the immediate area of the development
- + \$10.95 NNN

Contact Us

Michael Balow
Vice President
+1 248 351 2009
michael.balow@cbre.com

© 2024 CBRE, Inc. All rights reserved. This information has been obtained from sources believed reliable but has not been verified for accuracy or completeness. CBRE, Inc. makes no guarantee, representation or warranty and accepts no responsibility or liability as to the accuracy, completeness, or reliability of the information contained herein. You should conduct a careful, independent investigation of the property and verify all information. Any reliance on this information is solely at your own risk.