



FOR LEASE

4139

OREGON PIKE

EPHRATA, PA 17522

\$16.50/SF Triple Net

\$5.23/SF CAM



**CUSHMAN &
WAKEFIELD**

4139 OREGON PIKE

Ephrata, PA 17522

\$16.50/SF Triple Net

\$5.23/SF CAM

PROPERTY HIGHLIGHTS

80,119 SF | 3 STORY CLASS A OFFICE BUILDING

This Class A office building provides an attractive and functional corporate environment. 4139 Oregon Pike offers a variety of suite sizes and configurations from 1,690 up to 6,365 SF.

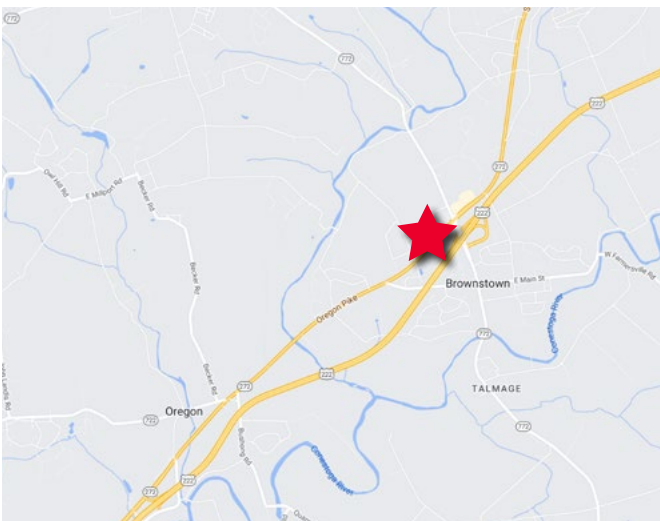
The building amenities include a large shared café, a fitness room with showers as well as partially furnished suites. This property has an abundance of parking at a ratio of over 5.3 spaces/1,000 SF, and has an outstanding location that is in close proximity to the PA Turnpike (I-76), Route 283 and Route 30.

Join Lancaster General Health, ELA Group, WSP engineers, and Pye Barker in this impeccably maintained building.



PROPERTY DETAILS

Address	4139 Oregon Pike, Ephrata, PA 17522
County	Lancaster County
Municipality	Lancaster County
Total Building SF	80,119 SF
Available Space	1,690 up to 6,365 SF
Acres	4.71 acres
Stories	3 stories
Built	1984
Renovated	2012
Elevator	Yes
Sprinklers	Yes
Lighting	T-5
Ceiling	2'x2' and 2'x4' acoustical ceiling
Zoning	C-2 - Highway Commercial
Construction	Masonry construction
Parking	Abundant parking



4139 OREGON PIKE

Ephrata, PA 17522

\$16.50/SF Triple Net

\$5.23/SF CAM

FLOOR PLAN - FIRST FLOOR



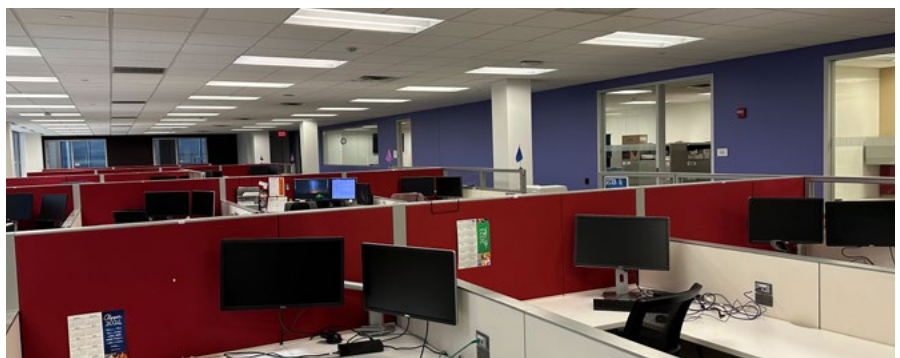
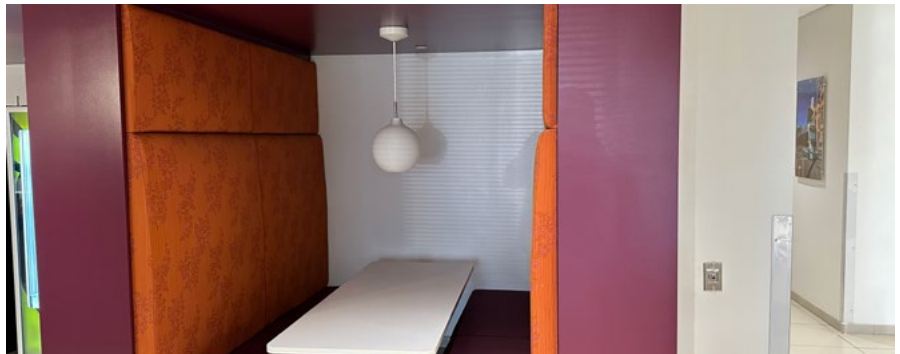
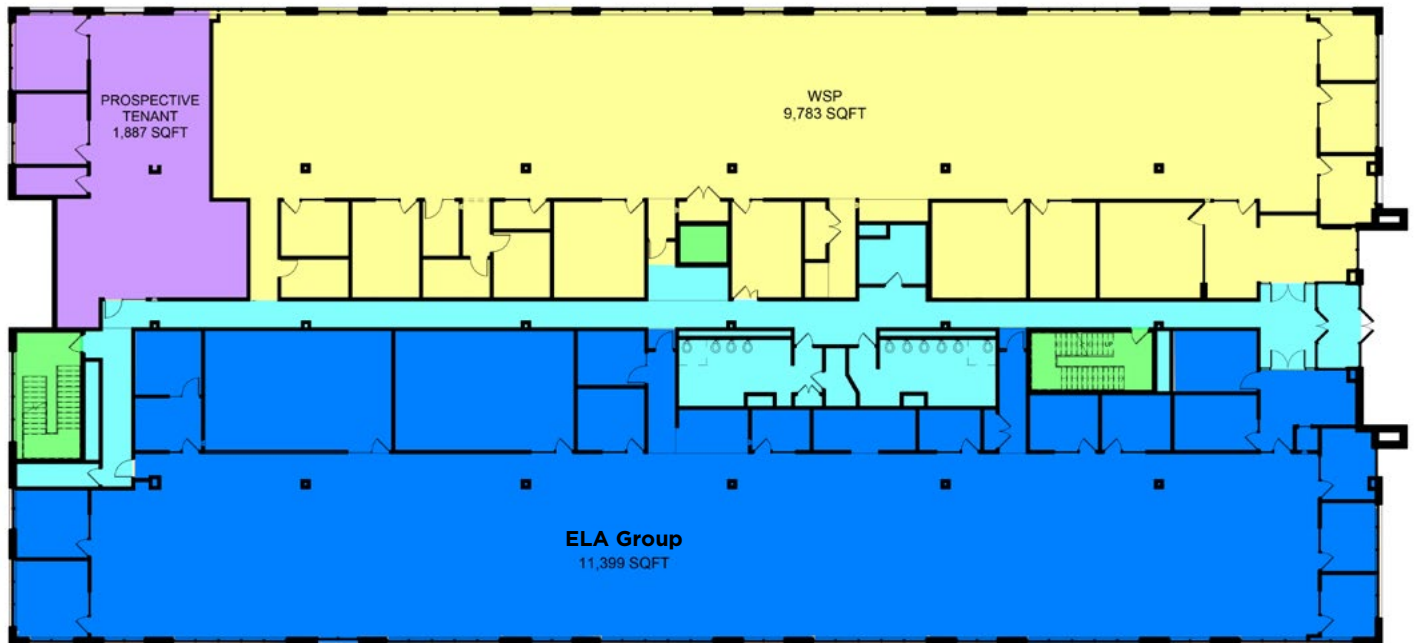
4139 OREGON PIKE

Ephrata, PA 17522

\$16.50/SF Triple Net

\$5.23/SF CAM

FLOOR PLAN - SECOND FLOOR

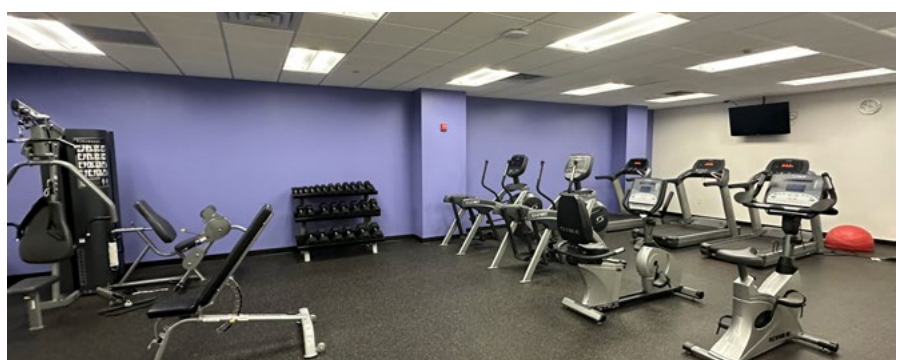
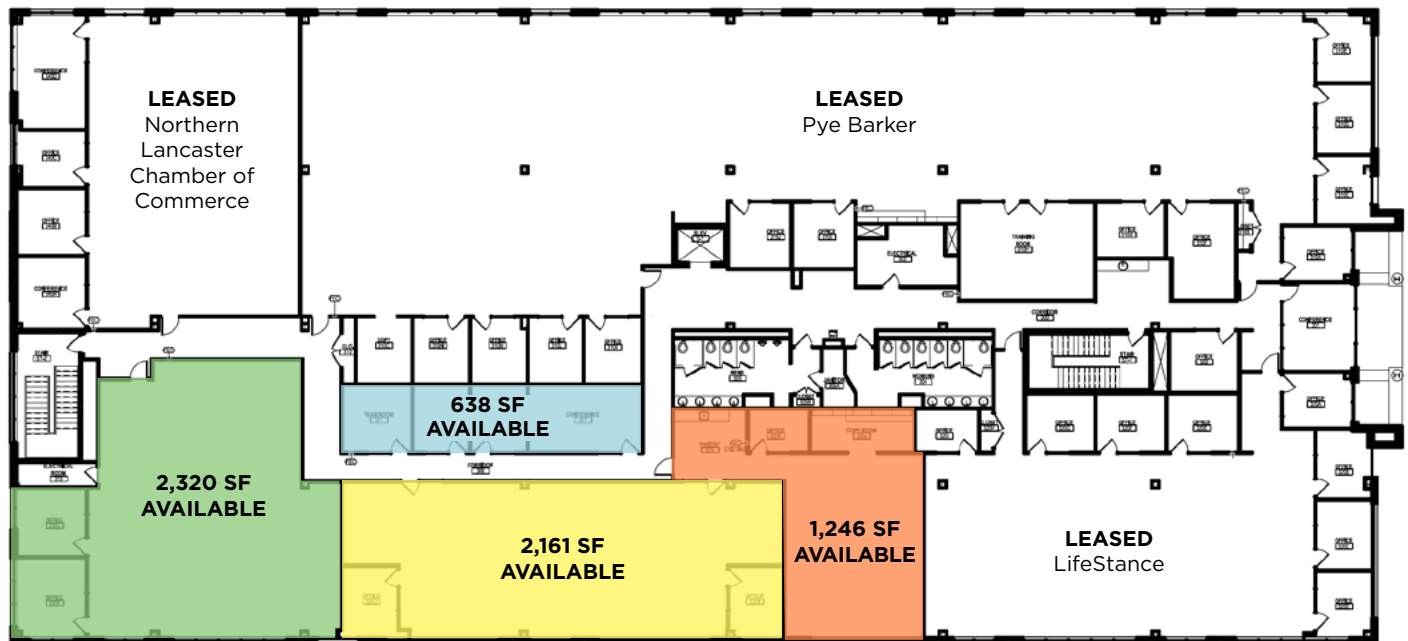


4139 OREGON PIKE

Ephrata, PA 17522

\$16.50/SF Triple Net
\$5.23/SF CAM

FLOOR PLAN - THIRD FLOOR



4139 OREGON PIKE

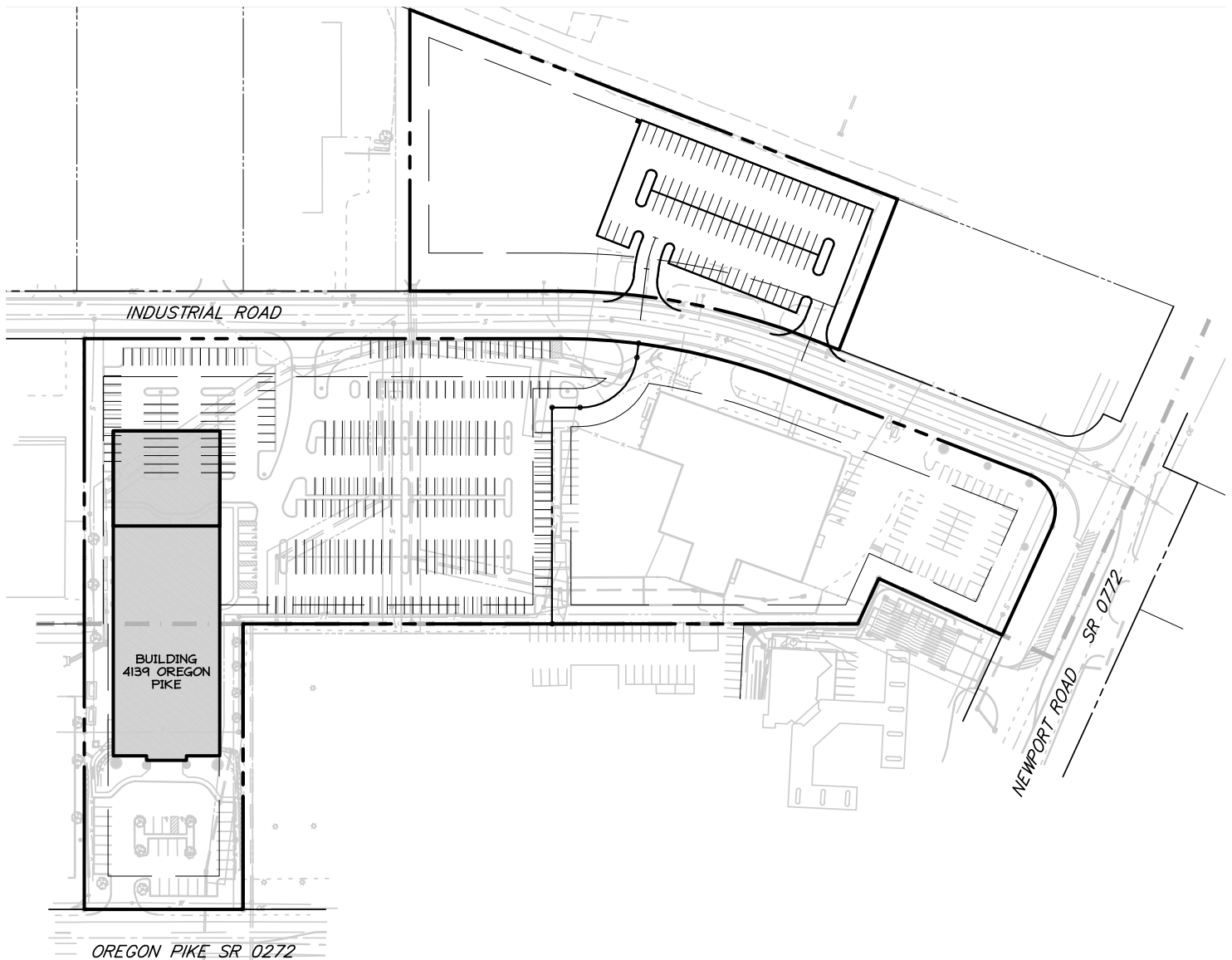
Ephrata, PA 17522

\$16.50/SF Triple Net

\$5.23/SF CAM

SITE PLAN

Total Building SF: 80,119 SF



4139 OREGON PIKE

Ephrata, PA 17522

\$16.50/SF Triple Net

\$5.23/SF CAM





FOR MORE INFORMATION, CONTACT:

Jason C. Sourbeer
Director
+1 717 231 7451
jason.sourbeer@cushwake.com

CUSHMAN & WAKEFIELD OF PENNSYLVANIA, LLC
4423 North Front Street
Harrisburg, PA 17110 | USA
+1 717 231 7290

©2026 Cushman & Wakefield. All rights reserved. The information contained in this communication is strictly confidential. This information has been obtained from sources believed to be reliable but has not been verified. NO WARRANTY OR REPRESENTATION, EXPRESS OR IMPLIED, IS MADE AS TO THE CONDITION OF THE PROPERTY (OR PROPERTIES) REFERENCED HEREIN OR AS TO THE ACCURACY OR COMPLETENESS OF THE INFORMATION CONTAINED HEREIN, AND SAME IS SUBMITTED SUBJECT TO ERRORS, OMISSIONS, CHANGE OF PRICE, RENTAL OR OTHER CONDITIONS, WITHDRAWAL WITHOUT NOTICE, AND TO ANY SPECIAL LISTING CONDITIONS IMPOSED BY THE PROPERTY OWNER(S). ANY PROJECTIONS, OPINIONS OR ESTIMATES ARE SUBJECT TO UNCERTAINTY AND DO NOT SIGNIFY CURRENT OR FUTURE PROPERTY PERFORMANCE.