

MEDICAL OFFICE FOR SALE / LEASE



**8550-8565 & 8600-8668 N. Silvery Ln.
Dearborn Heights, MI 48127**

FEATURES:

- Approximately 32,330 usable square feet (two buildings)
- 5.6 Acre site
- The owner intends to develop a behavioral health hospital on this site. Phase One is a 28-bed detox and rehabilitation residential facility and phase two is a 56-bed facility for the treatment of eating disorders, geriatric psych and child psych
- Entrance off Joy Road, west of Telegraph Road

CONTACT BROKER FOR PRICING



JAMES MITCHELL

Assistant Vice President

(o) 248.399.9999 x253

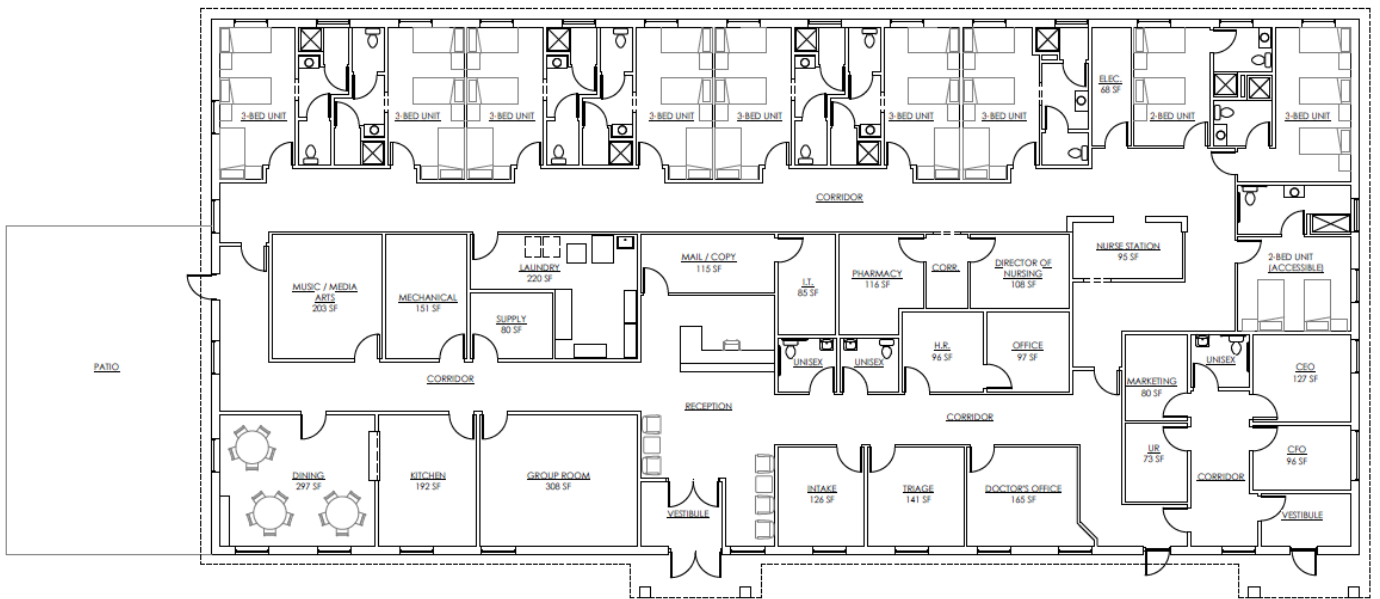
(m) 248.961.0843

jmitchell@dominionra.com



DOMINION
REAL ESTATE ADVISORS

PHASE 1 FLOOR PLAN – 8600-8668 N. SILVERY LANE



JAMES MITCHELL
Assistant Vice President
(o) 248.399.9999 x253
(m) 248.961.0843
jmitchell@dominionra.com



DOMINION
REAL ESTATE ADVISORS

Phase 2 FLOOR PLAN - 8550-8565 N. SILVERY LN



JAMES MITCHELL
Assistant Vice President
(o) 248.399.9999 x253
(m) 248.961.0843
jmittchell@dominionra.com



DOMINION
REAL ESTATE ADVISORS