

Commercial Land | Manor

FOR SALE

16620 FM 973, Manor Tx



Kristofer Kasper
Director Land + Commercial
512.966.9781
kris.kasper@compass.com

seed.
PROPERTY GROUP
COMPASS

Commercial Land | Manor

16620 FM 973

Location	16620 FM 973, Manor Tx 78653
----------	------------------------------

Acreage	10.098 acres
---------	--------------

Price	\$2,500,000 (\$5.68/ft)
-------	-------------------------

Frontage	Approx. 299 feet on FM 973
----------	----------------------------

Water Utility	Aqua
---------------	------

Zoning	Pflugerville ETJ
--------	------------------

Exemptions	None
------------	------

Agent Link	Click Here
------------	----------------------------

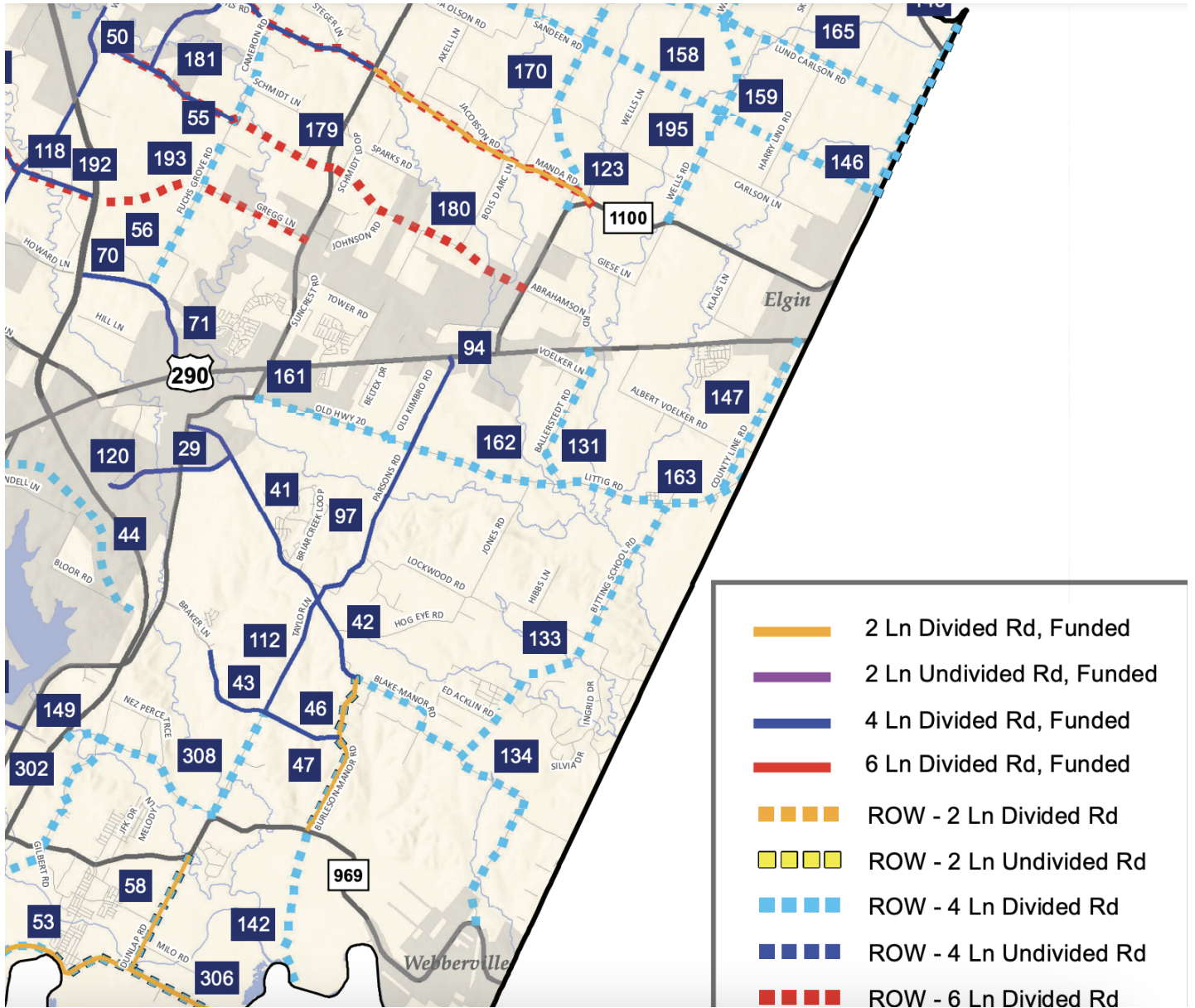
***Survey and related due diligence documents available upon request

Kristofer Kasper
Director Land + Commercial
512.966.9781
kris.kasper@compass.com



Commercial Land | Manor
16620 FM 973

Travis County Road Projects Map



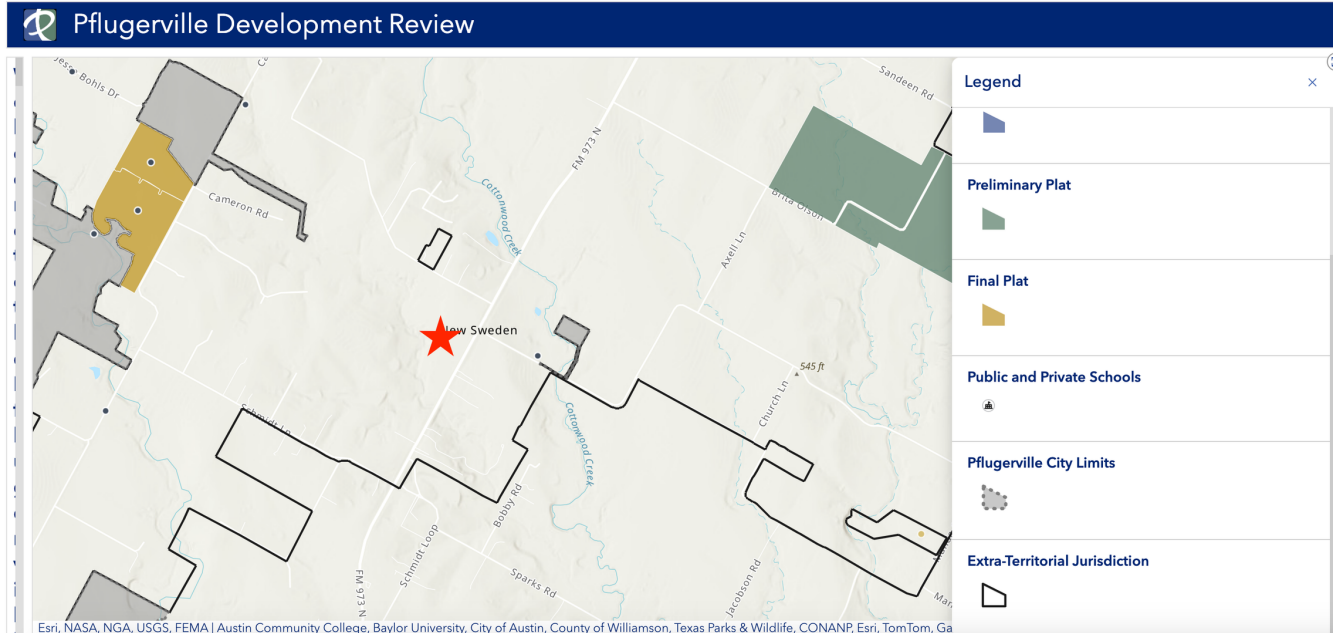
Kristofer Kasper
 Director Land + Commercial
 512.966.9781
 kris.kasper@compass.com



Commercial Land | Manor

16620 FM 973

Pflugerville ETJ Map



Floodplain Map



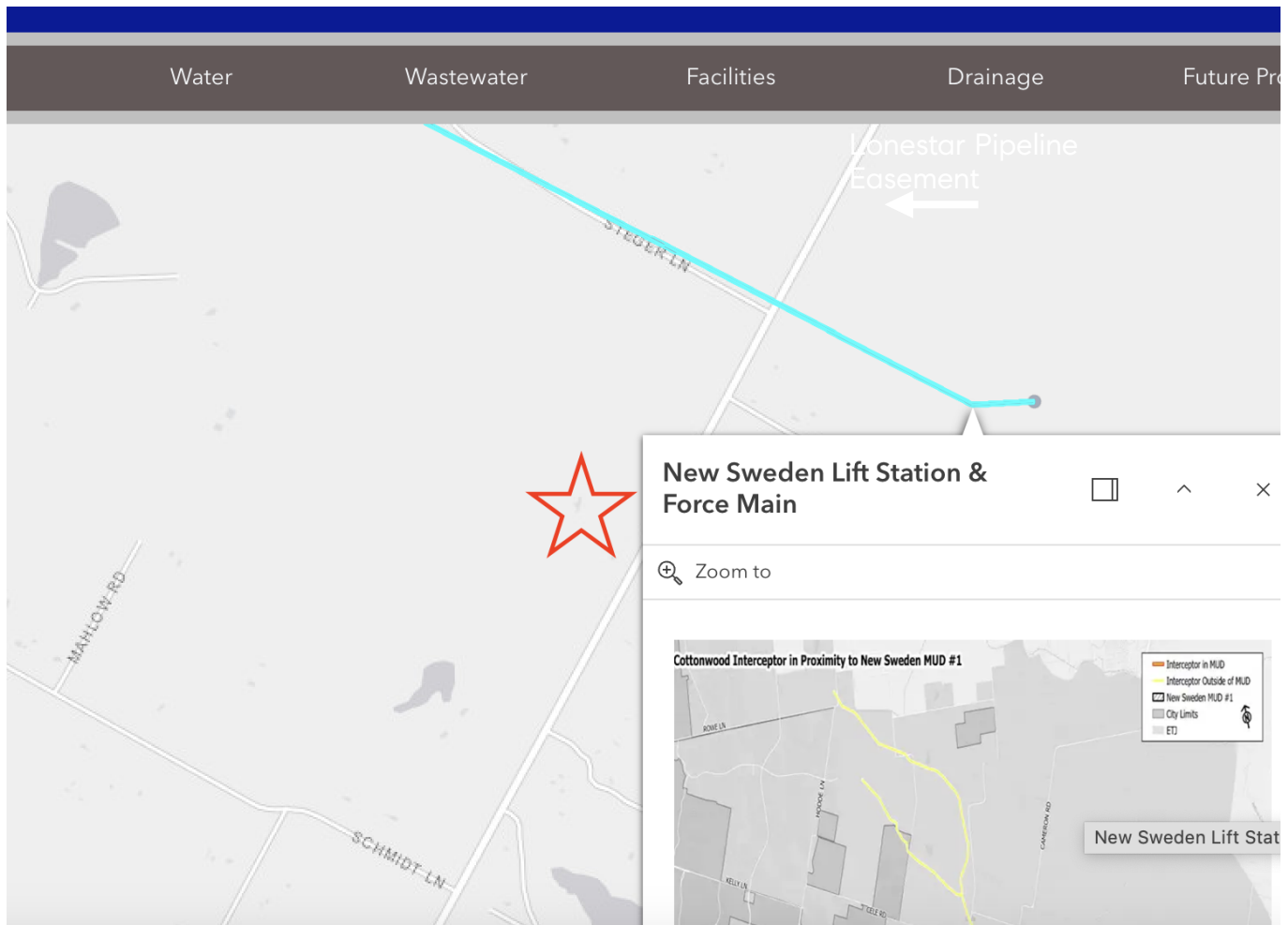
Kristofer Kasper
Director Land + Commercial
512.966.9781
kris.kasper@compass.com



Commercial Land | Manor

16620 FM 973

New Sweden Lift Station and Force Main



Kristofer Kasper
Director Land + Commercial
512.966.9781
kris.kasper@compass.com



Commercial Land | Manor

16620 FM 973

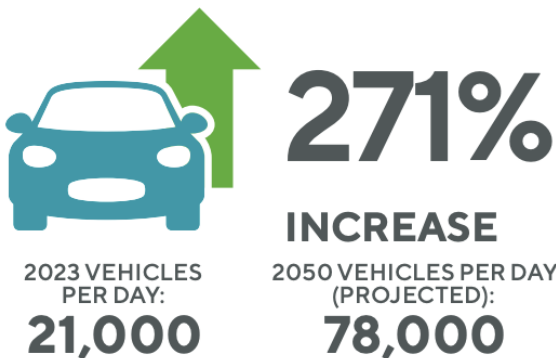
This 10+ acre property is located on FM 973 near New Sweden Church Road and offers a prime opportunity for development. The land is mostly cleared and level, with a mature tree stand, winding creek and a stock tank. Located in the ETJ, the property allows for versatile development possibilities, whether for commercial or residential purposes. The property is ideally situated for easy access to the rapidly growing amenities in Manor, the New Sweden Road expansion and is approximately 10 miles from Samsung's campus in Taylor. The seller is currently coordinating with Manville and Aqua WSC to install a 1-inch water line to the property and has a TxDot approved curb cut onto FM 973. This is an exceptional opportunity for development in a location poised for future growth.

Highlights

- Close to Samsung
- Pflugerville ETJ
- Proposed water onsite
- Proposed WW nearby
- No zoning



FM 973 AVERAGE DAILY TRAFFIC



Travis County Population



Williamson County Population



Kristofer Kasper
Director Land + Commercial
512.966.9781
kris.kasper@compass.com

seed.
PROPERTY GROUP
COMPASS