

4201 N 24th Street
Phoenix, Arizona 85016

High Value Property in
the Camelback Corridor



For Lease: \$29.95/SF Full Service Gross

For More Information Contact:

Tom Bean, CCIM

+1 602 393 6790

thomas.bean@naihorizon.com

All information furnished regarding property for sale, rental or financing is from sources deemed reliable, but no warranty or representation is made to the accuracy thereof and same is submitted subject to errors, omissions, change of price, rental or other conditions prior to sale, lease or financing or withdrawal without notice. No liability of any kind is to be imposed on the broker herein.

NAI Horizon

2944 N 44th Street, Suite 200

Phoenix, Arizona 85018

+1 602 955 4000

naihorizon.com

4201 N 24th Street



Property Features

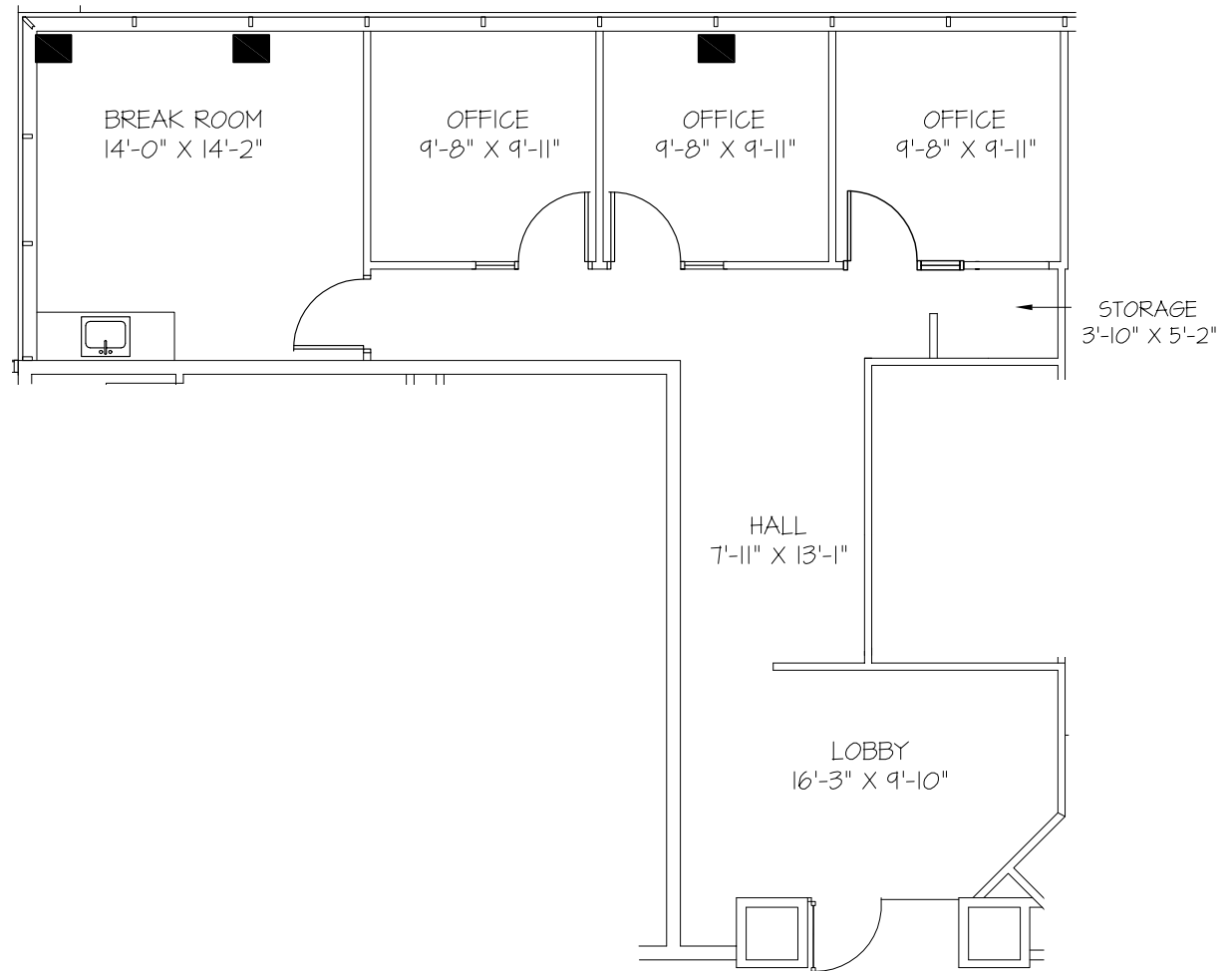
- 68,710 SF office building
- Bright, open, two-story lobby
- Full-time on-site security guard during office hours
- Card access security system for after-hours entry
- Visitor parking at the front door
- 4:1000 parking ratio including over 1:1000 covered, reserved
- Monument signage available



4201 N 24th Street

Suite 150: 1,073 RSF

- \$29.95/ SF FSG
- Glass suite entry
- Welcoming reception area with three private offices and a conference room featuring a break counter
- Abundant natural light with an impressive glass line
- Move-in ready spec condition
- Highly efficient, functional layout

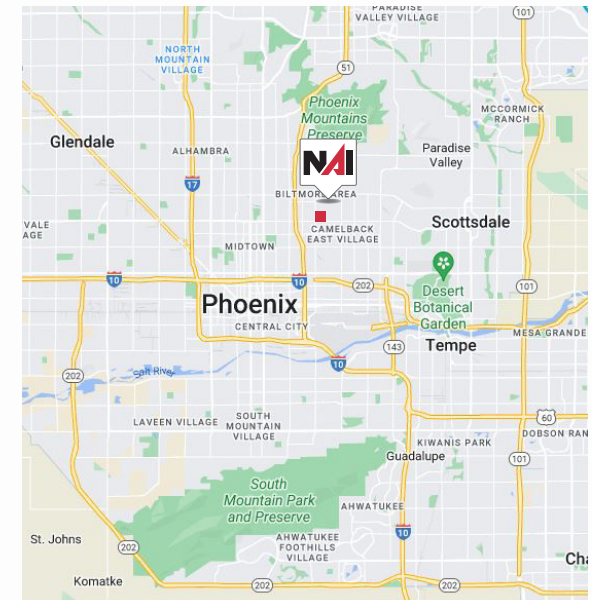


4201 N 24th Street



Location Features

- Less than one (1) mile to SR-51
- Within 15 minutes to Sky Harbor Airport
- Located on a public transportation route
- Near Biltmore area amenities including shopping, retail, restaurants, banking, and more



12-04-121