



MEDICAL PROFESSIONAL
OFFICE FOR LEASE
NORTH NAPERVILLE



Property Overview

Conveniently situated in Naperville, Illinois, 1733 Park Street offers prime commercial real estate within minutes of Interstate 88.

This strategic location provides swift access to major transportation arteries, facilitating seamless connections throughout the Chicagoland area. Additionally, its proximity to downtown Naperville ensures businesses enjoy both the vibrancy of the city center and the tranquility of a suburban setting, making it an optimal choice for enterprises seeking accessibility and prestige.

Property Facts

Building Type	Office
Year Build/Renovated	1985/2020
Building Height	3 Stories
Building Size	38,333 SF
Building Class	B
Typical Floor Size	12,778 SF
Unfinished Ceiling Height	12'
Parking	118 Surface Parking Space

Select Tenants

Brooks, Tauralis, & Tibble
Farmers Insurance
Lantz Financial
TM Process & Controls



Matt Calvo
Broker- Ellworth Partners, LLC
630 995 3605
matt@ellsworthpartnersllc.com



Charlie Calvo
Broker- Ellworth Partners, LLC
630 995 3605
charlie@ellsworthpartnersllc.com

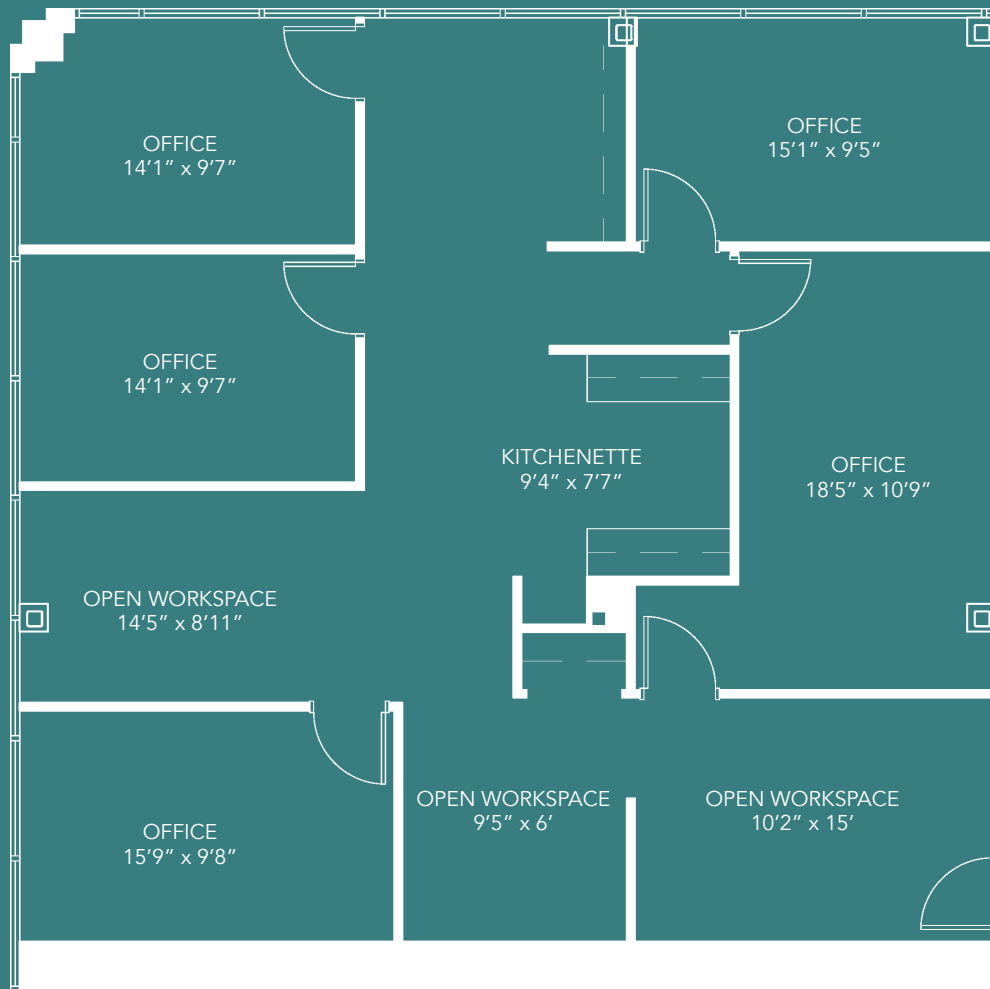


Suite 110

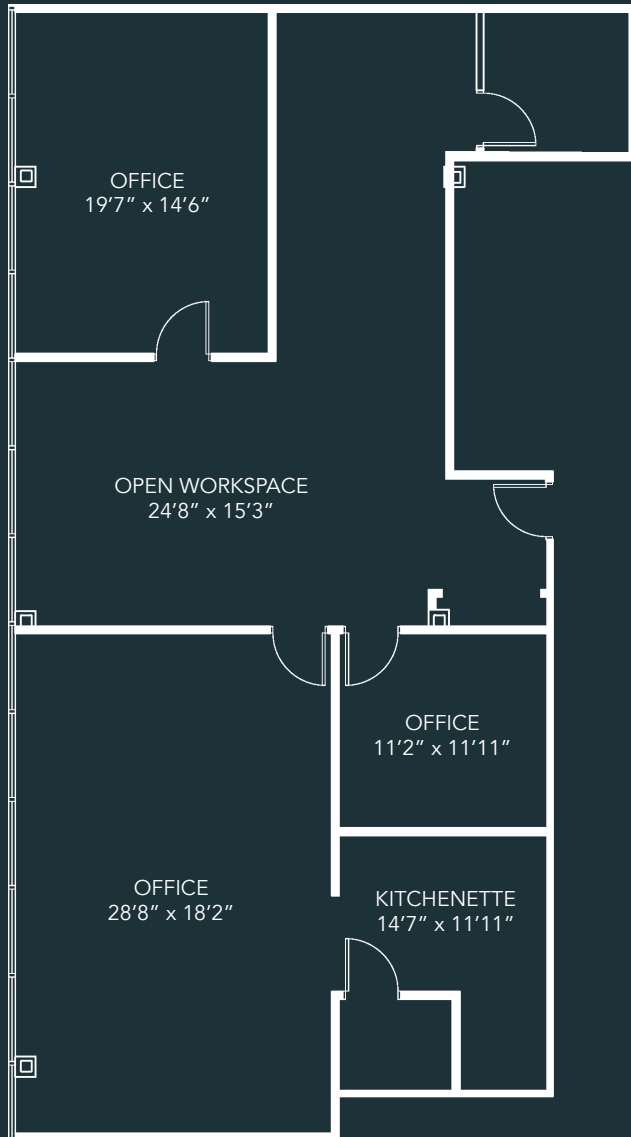
- 2,081 SQUARE FEET
- \$14 /SF/YR BASE RENT
- \$6 /SQUARE FOOT ADDITIONAL RENT

-
- \$41,628 ANNUAL RENT
 - \$3,4669 MONTHLY RENT

-
- AVAILABLE NOW
 - LANDLORD OFFERING GENEROUS TENANT IMPROVEMENT



1733 Park St. Naperville, Illinois 60563



Suite 150

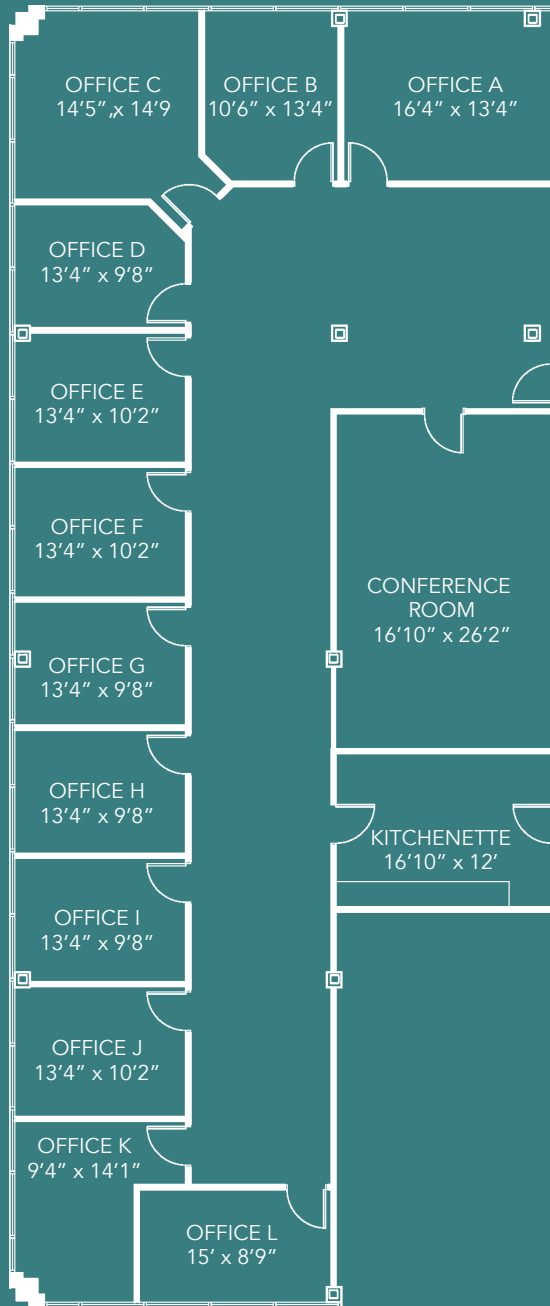
- 2,207 SQUARE FEET
- \$14 /SF/YR BASE RENT
- \$6 /SQUARE FOOT ADDITIONAL RENT

-
- \$44,138 ANNUAL RENT
 - \$3,678 MONTHLY RENT

-
- AVAILABLE NOW
 - LANDLORD OFFERING GENEROUS TENANT IMPROVEMENT



1733 Park St. Naperville, Illinois 60563

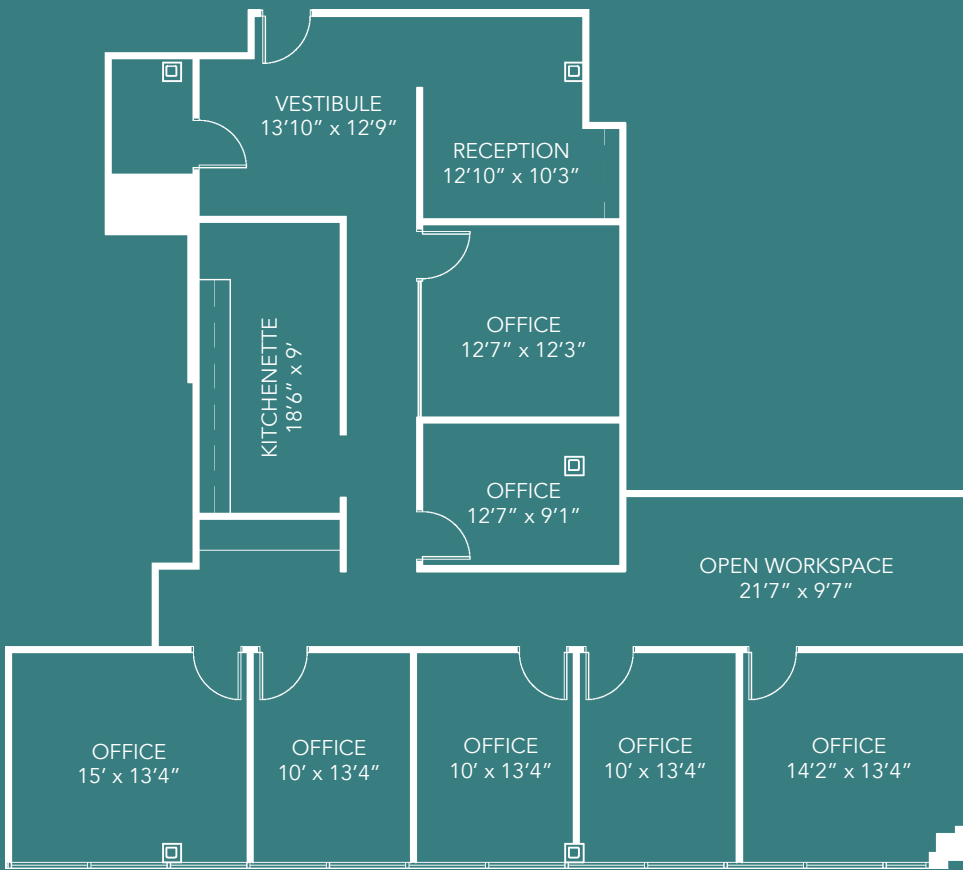


Suite 200

- 12 PRIVATE OFFICES
 - SHARED CONFERENCE ROOM
 - SHARED KITCHENETTE
 - LARGE WINDOW LINES
-
- ASK BROKER FOR PRICING AND AVAILABILITY



1733 Park St. Naperville, Illinois 60563



Suite 220

- 2,632 SQUARE FEET
 - \$14 /SF/YR BASE RENT
 - \$6 /SQUARE FOOT ADDITIONAL RENT
-
- \$52,632 ANNUAL RENT
 - \$4,386 MONTHLY RENT
-
- AVAILABLE NOW
 - LANDLORD OFFERING GENEROUS TENANT IMPROVEMENT



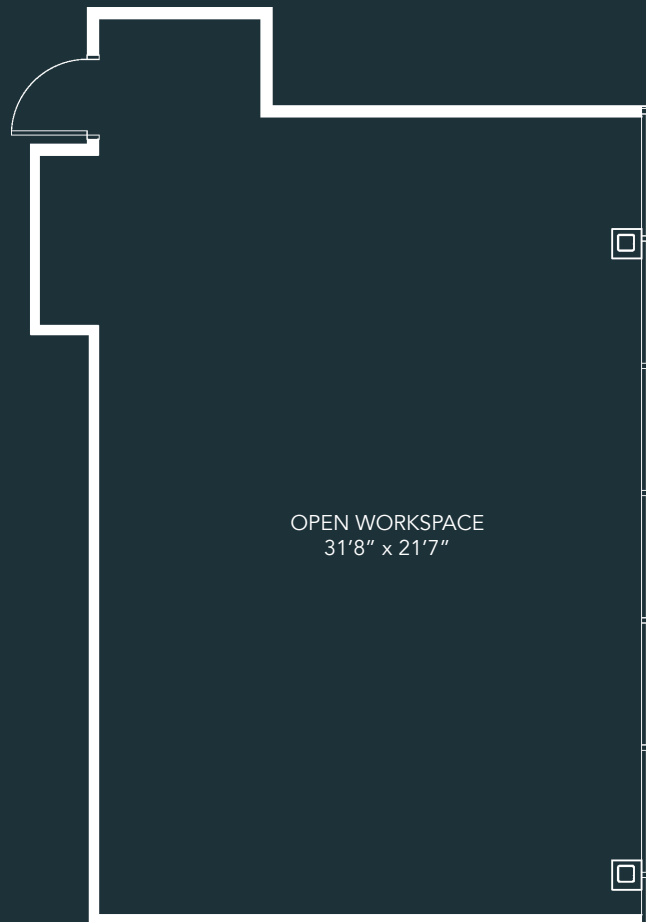
1733 Park St. Naperville, Illinois 60563

Suite 255

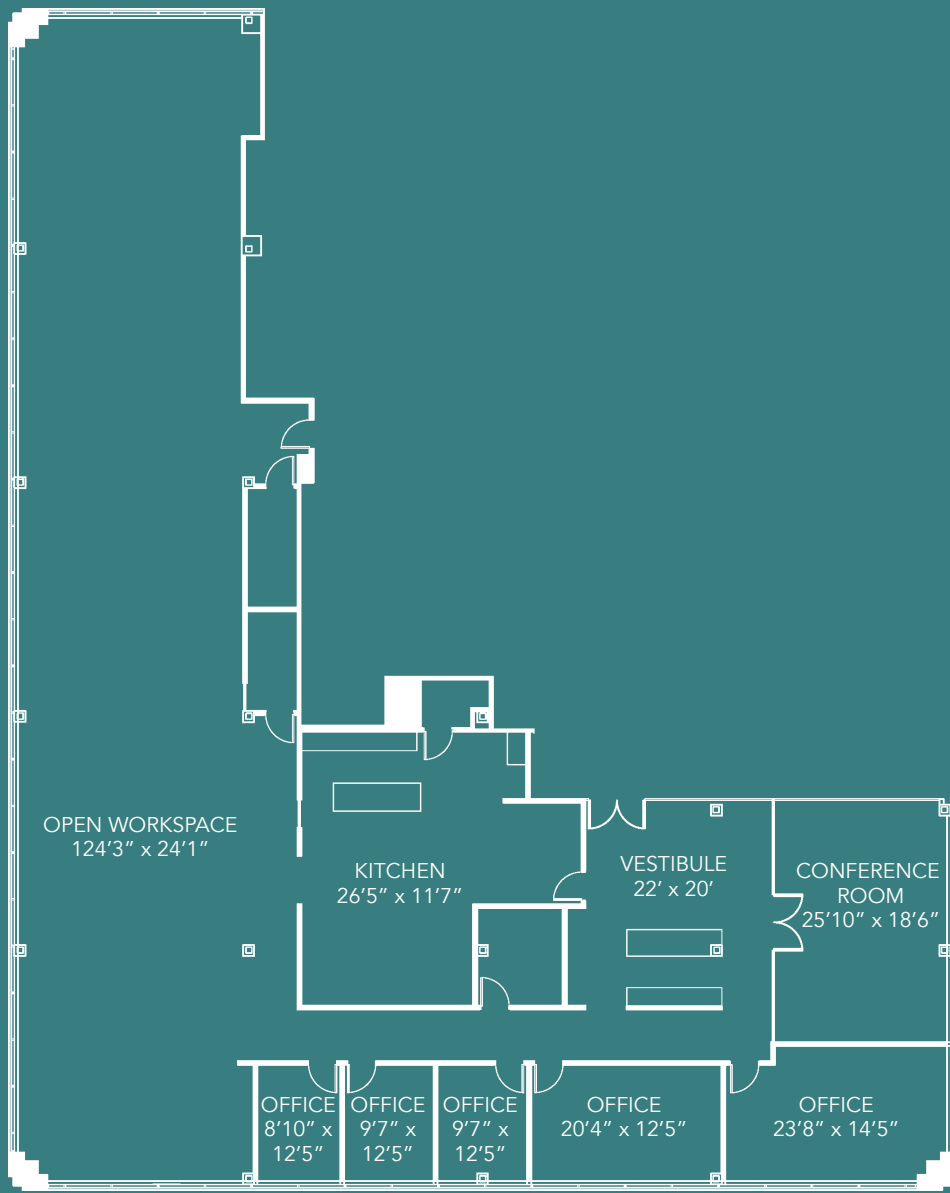
- 923 SQUARE FEET
- \$14 /SF/YR BASE RENT
- \$6 /SQUARE FOOT ADDITIONAL RENT

-
- \$18,467 ANNUAL RENT
 - \$1,539 MONTHLY RENT

-
- AVAILABLE NOW
 - LANDLORD OFFERING GENEROUS TENANT IMPROVEMENT



1733 Park St. Naperville, Illinois 60563



Suite 300

- 8,255 SQUARE FEET
- \$14 /SF/YR BASE RENT
- \$6 /SQUARE FOOT ADDITIONAL RENT

-
- \$165,097 ANNUAL RENT
 - \$13,758 MONTHLY RENT

-
- AVAILABLE NOW
 - LANDLORD OFFERING GENEROUS TENANT IMPROVEMENT



1733 Park St. Naperville, Illinois 60563