

FOR SUBLEASE

2225 N SAM HOUSTON PKWY



+/- 12,058 SF ON 4.5 AC, PARTIALLY STABILIZED

CONTACT

Beau Kaleel, SIOR
Executive Managing Director
713 963 2844
beau.kaleel@cushwake.com

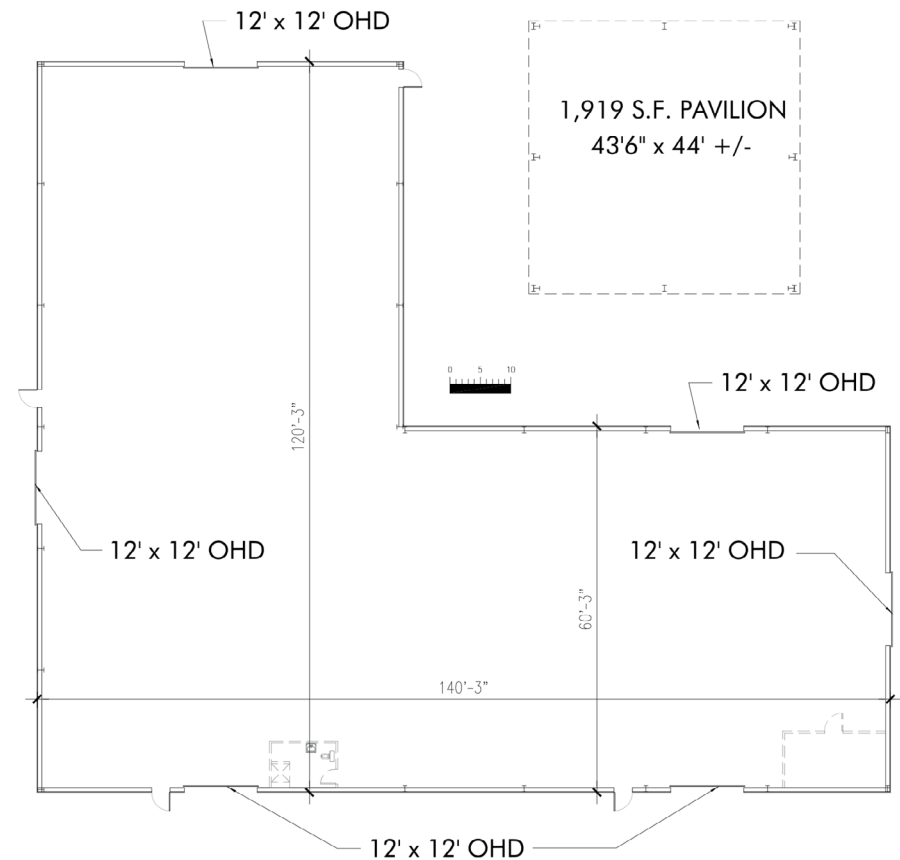
Michael Foreman
Managing Director
713 963 2850
michael.foreman@cushwake.com



PROPERTY FEATURES

Standalone building and light duty stabilized yard with 473 ft of Beltway 8 frontage available for sublease.

Total Area	4.5 AC
Building Area	12,058
Covered Pavillion	1,919 SF
Stabilized Yard	3.5 AC
Eve Height	14'
Utilities	water well/septic
Base Rent:	\$17,000



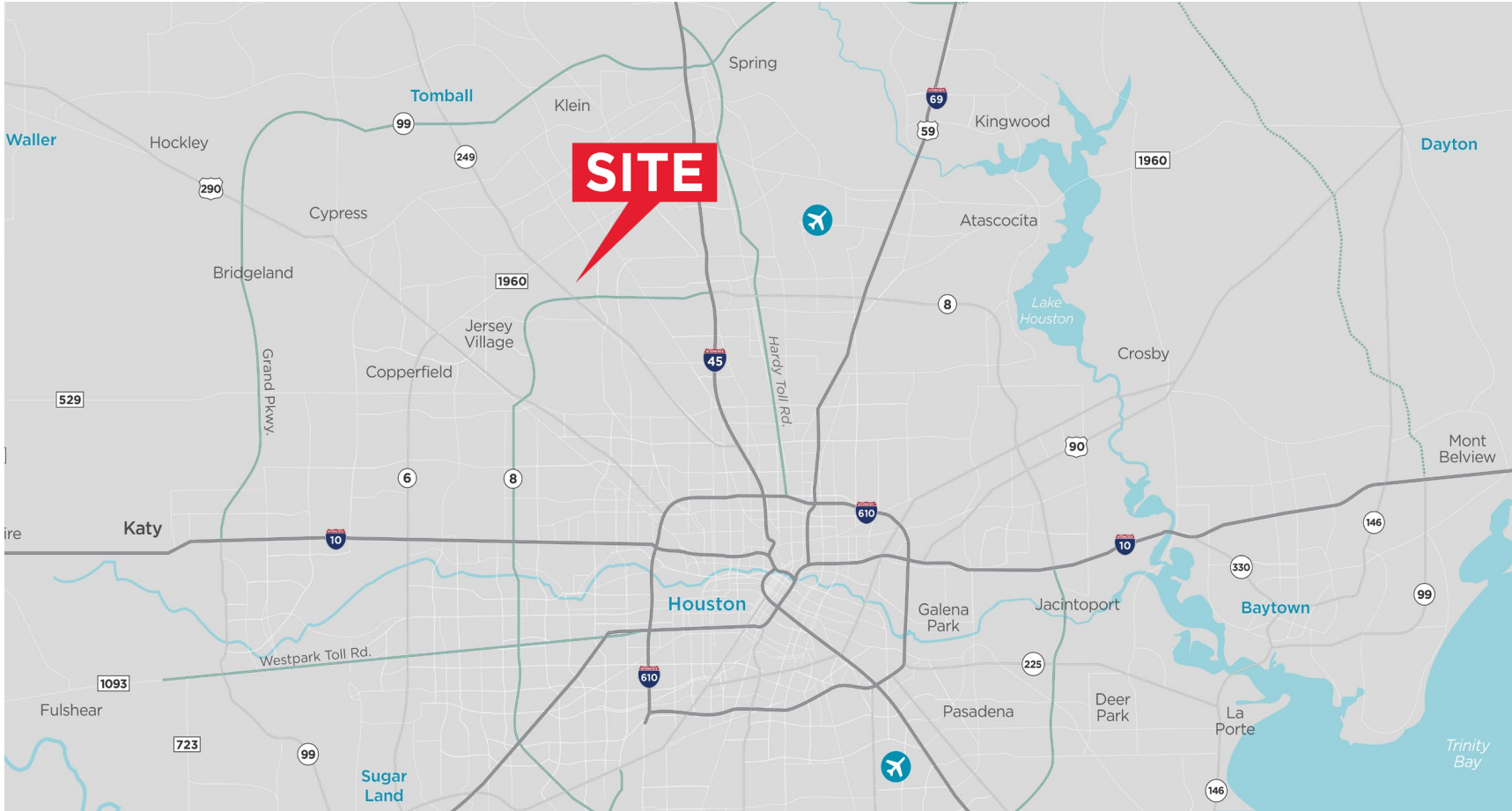
CONTACT

Beau Kaleel, SIOR
Executive Managing Director
713 963 2844
beau.kaleel@cushwake.com

Michael Foreman
Managing Director
713 963 2850
michael.foreman@cushwake.com



LOCATION



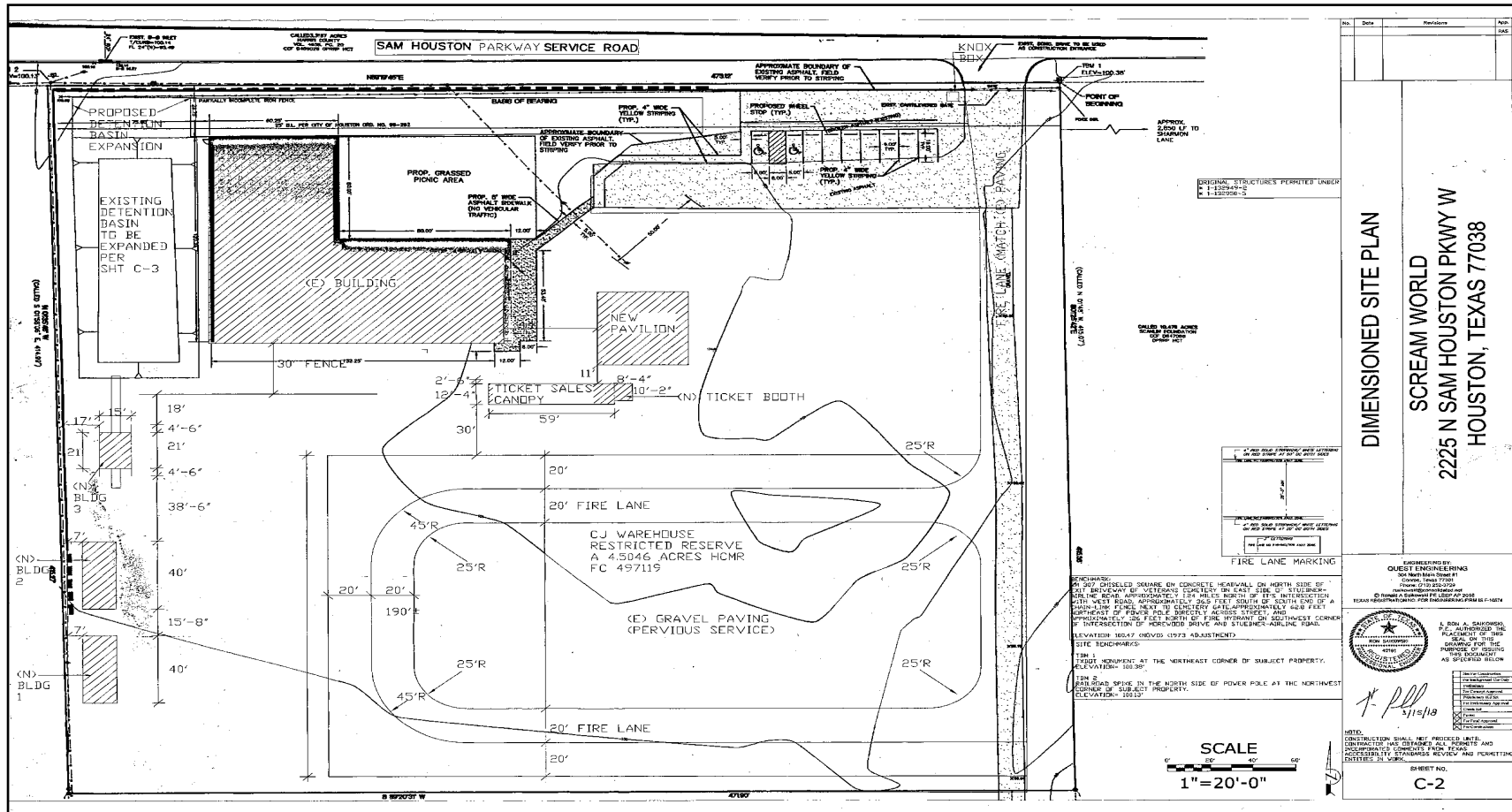
CONTACT

Beau Kaleel, SIOR
Executive Managing Director
713 963 2844
beau.kaleel@cushwake.com

Michael Foreman
Managing Director
713 963 2850
michael.foreman@cushwake.com



SITE PLAN



CONTACT

Beau Kaleel, SIOR
 Executive Managing Director
 713 963 2844
 beau.kaleel@cushwake.com

Michael Foreman
 Managing Director
 713 963 2850
 michael.foreman@cushwake.com

