

↗ 33,274-SF MEDICAL/OFFICE BUILDING

CBRE

1600

**N STATE STREET**

1600 Medical Plaza  
Jackson, MS 39202

FOR SALE

CBRE, Inc., as exclusive agent, is pleased to present the following medical/office building for sale:

**33,274 SF**

BUILDING SIZE (SF)

**1.63 AC**

PARCEL SIZE (ACREAGE)

**115**

PARKING SPACES

**C-2**

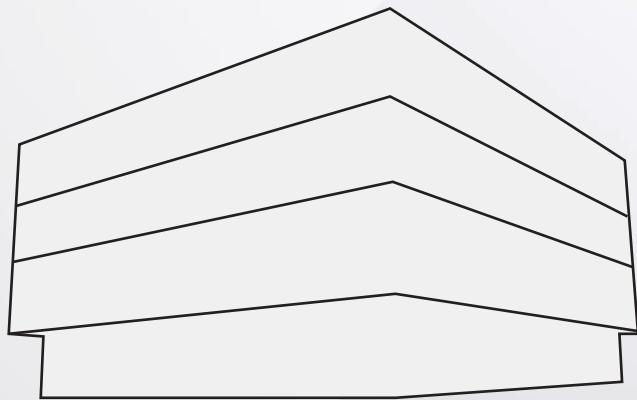
LIMITED COMMERCIAL  
DISTRICT ZONING

**14,000**

VEHICLES PER DAY

**\$2.55M**

ASKING PRICE



Floor 4: 8,922 SF

Floor 3: 8,922 SF

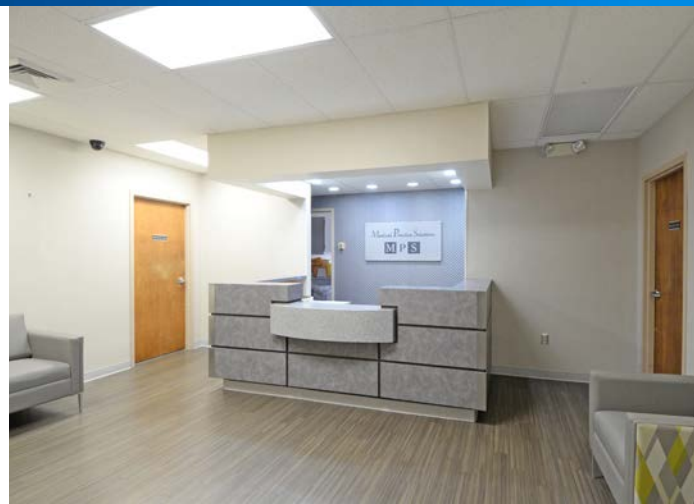
Floor 2: 8,922 SF

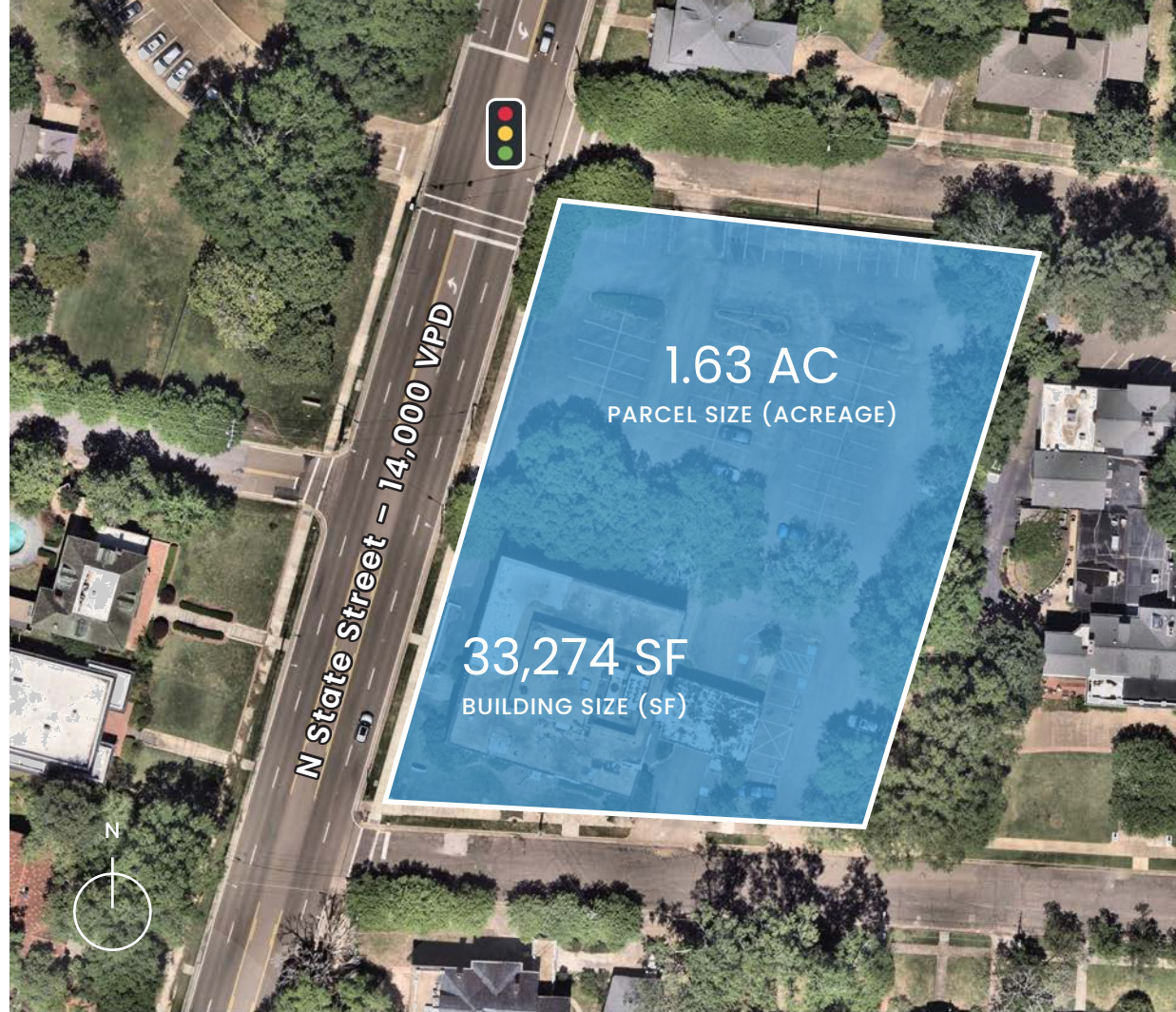
Floor 1: 6,508 SF

- + Adjacent to Fairview Inn
- + Traffic Signal
- + Across from entrance to Millsaps College Campus at Oakwood Street
- + Access off Fairview Street
- + 0.4 mile south of University MS Medical Center
- + 0.31 mile north of Baptist Memorial Hospital
- + One 3,729-SF medical office lease in-place, second floor



1600 N STATE STREET, JACKSON, MS 39202 | 1600 MEDICAL PLAZA





**Richard Ridgway**  
Senior Vice President  
+1 601 420 8080  
richard.ridgway@cbre.com

© 2024 CBRE, Inc. This information has been obtained from sources believed reliable. We have not verified it and make no guarantee, warranty or representation about it. Any projections, opinions, assumptions or estimates used are for example only and do not represent the current or future performance of the property. You and your advisors should conduct a careful, independent investigation of the property to determine to your satisfaction the suitability of the property for your needs. CBRE and the CBRE logo are service marks of CBRE, Inc. and/or its affiliated or related companies in the United States and other countries. All other marks displayed on this document are the property of their respective owners.

**CBRE**