



WALDROP PROPERTIES, LLC
Commercial Real Estate Solutions

For Sale

Commercial/Retail Site

3921 ML King Jr Blvd., New Bern, North Carolina

■ Offering Price: \$298,500

■ Acres:
Approximately 1.12 Acres

■ Survey/Site Plan:
Please See Below/
Attached

■ Aerial:
Please See Below/
Attached

■ Parcel ID: 8-207-087

■ Zoning:
C-3 (Commercial District)

■ Utilities:
Water & Sewer Are
Available

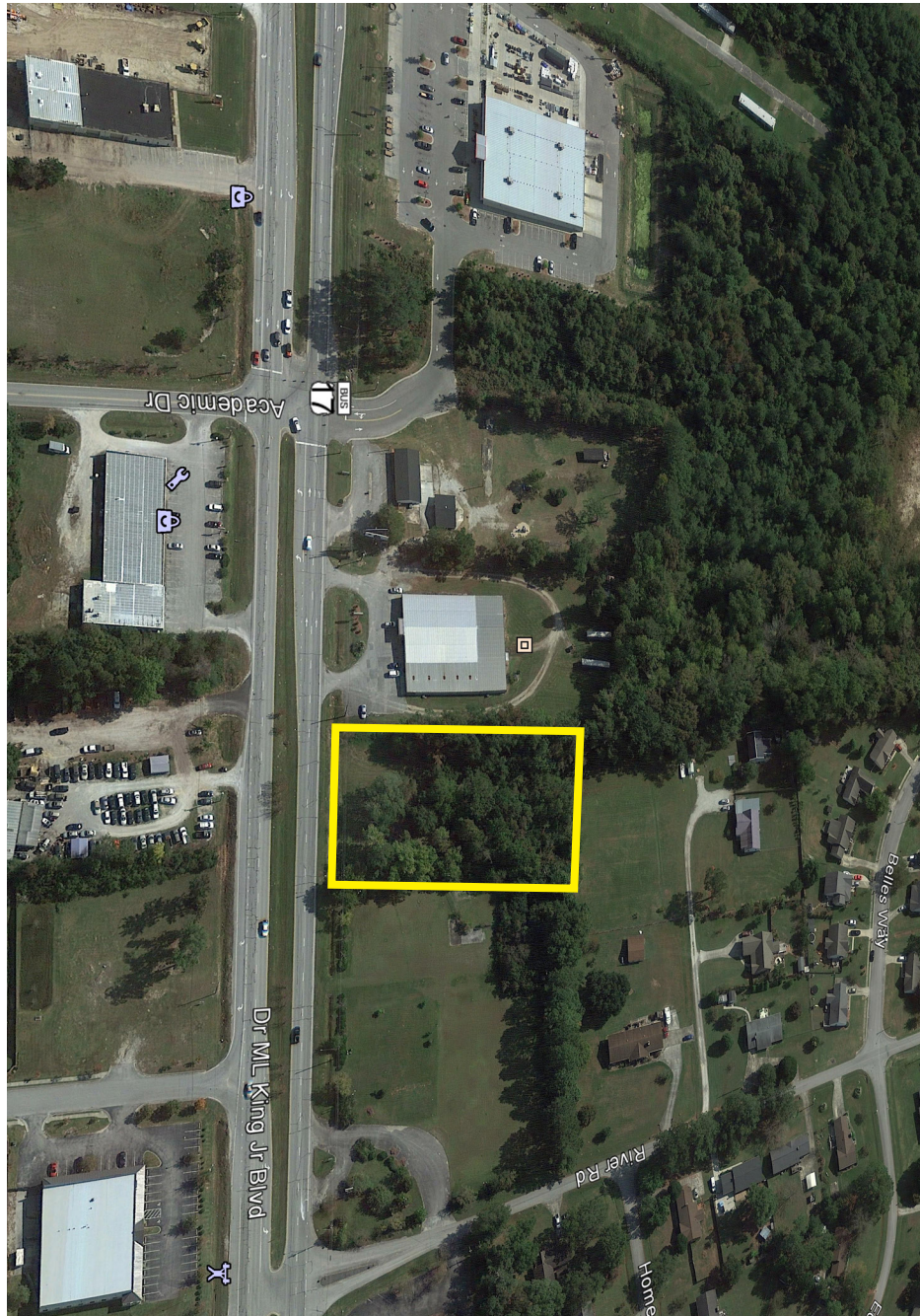
■ Traffic Count:
Approximately 25,000
Vehicles Per Day
Source: 2021 Kalibrate Technologies

■ Demographics
Population (2021):
1 Mile: 1,479
3 Mile: 18,150
5 Mile: 38,790

Average Household
Income (2021):
1 Mile: \$84,754
3 Mile: \$86,161
5 Mile: \$75,500
Source: U.S. Census Bureau

■ Location:
Located Adjacent To The
Mill Outlet Village

Approximately 2 Miles To
US Hwy 70 East



for more information contact

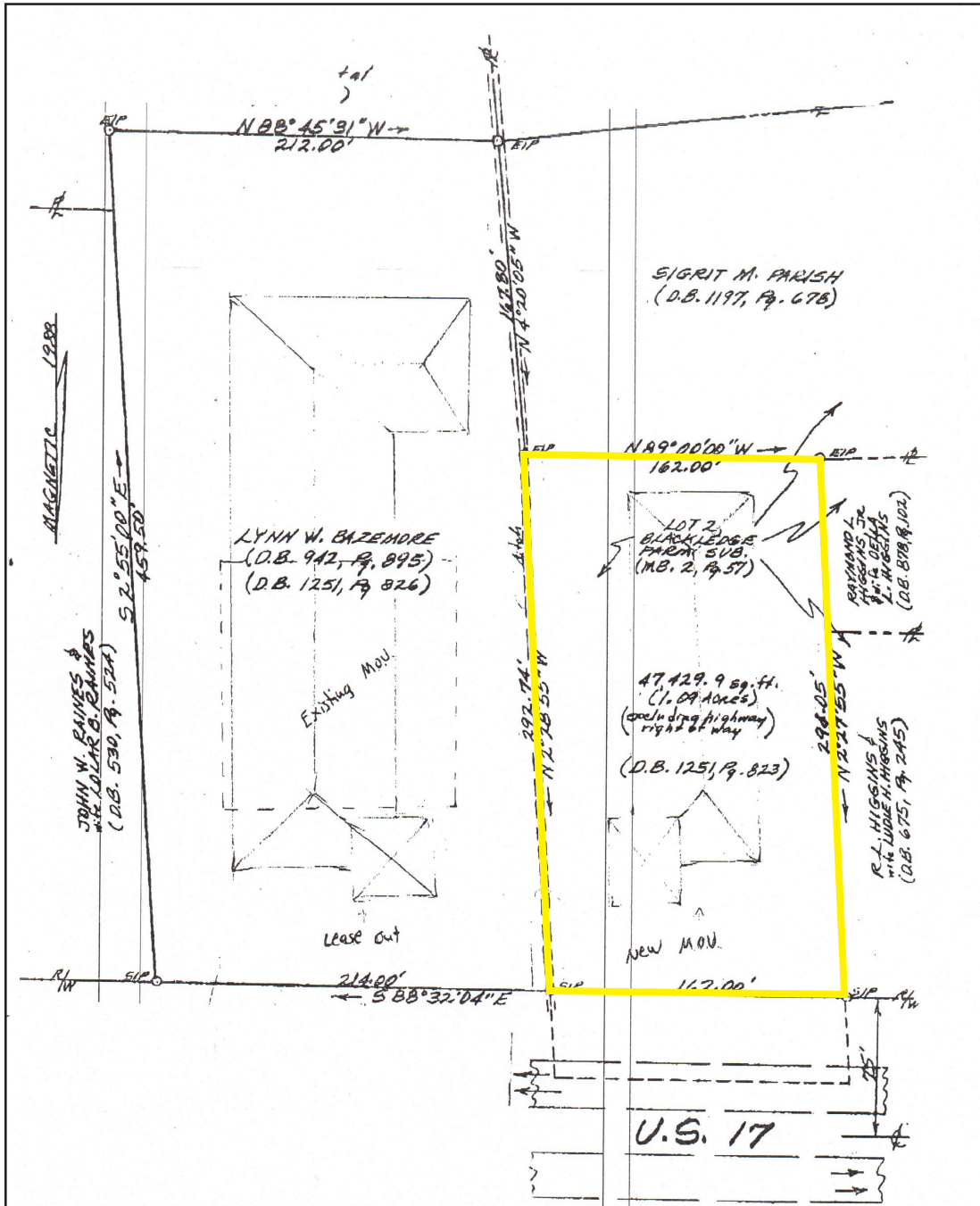
Michael Waldrop at 919-645-1605
michael@wp-cre.com

The information contained herein has been obtained from sources deemed reliable, however, no representation or warranty, either expressed or implied, is made as to its completeness or accuracy. Prospective buyers should make their own investigations to ascertain the accuracy of the material contained herein. This offering is subject to change, correction or withdrawal.

3700 Computer Dr., Suite 240
Raleigh, NC 27609
Office: 919-645-1605
Fax: 919-645-1606
www.waldropproperties.com

3921 ML King Jr Blvd.

New Bern, North Carolina



Survey

The Survey/Site Plan Is Very Old And Likely Not Entirely Accurate.
A Prospective Buyer Should Not Rely On the Information On the Survey/Site Plan.

for more information contact

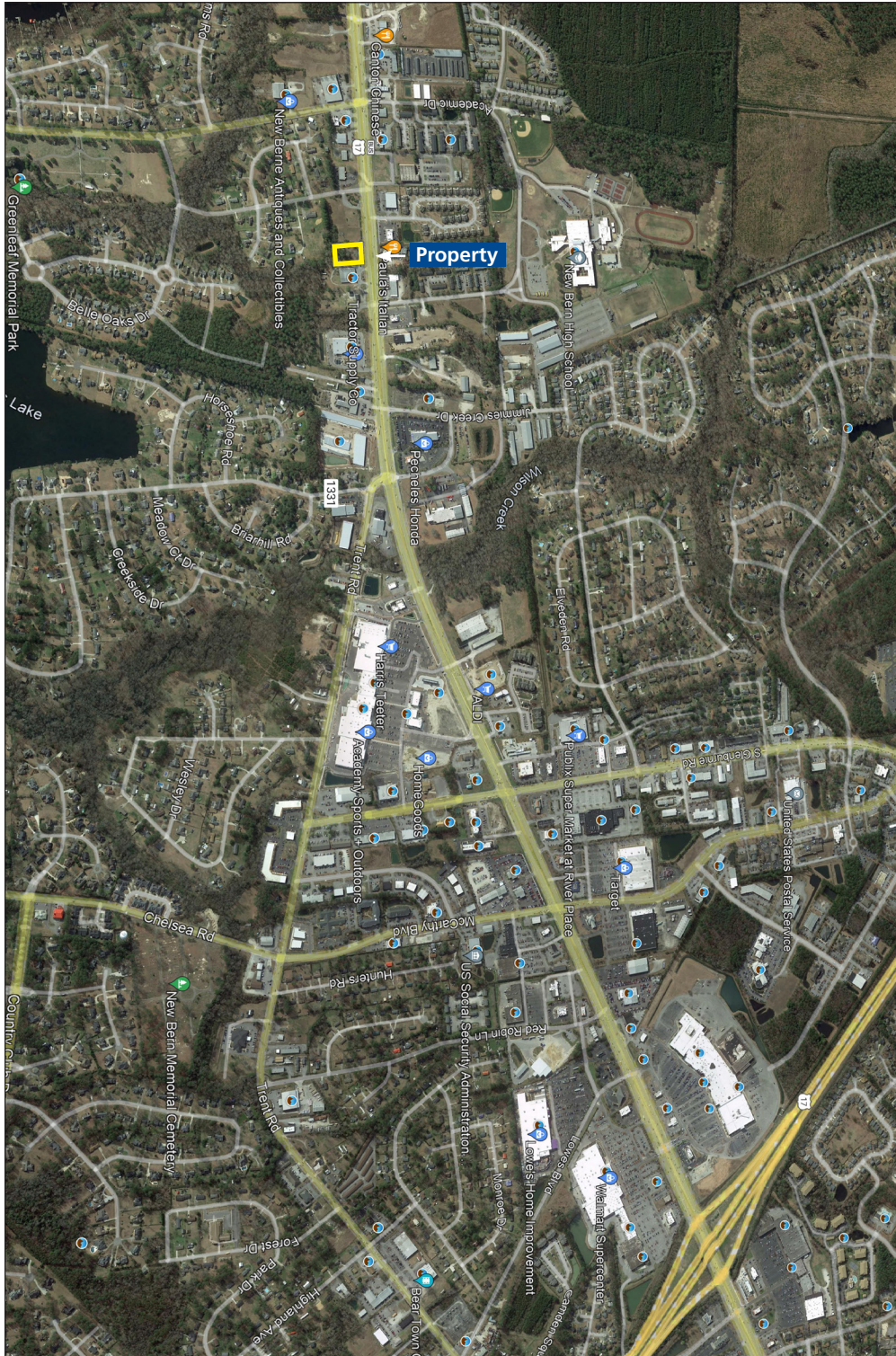
Michael Waldrop at 919-645-1605
michael@wp-cre.com

www.waldropproperties.com



3921 ML King Jr Blvd.

New Bern, North Carolina



Aerial



WALDROP PROPERTIES, LLC
Commercial Real Estate Solutions

for more information contact

Michael Waldrop at 919-645-1605
michael@wp-cre.com

www.waldropproperties.com