

BAYTECH

CLASS A OFFICE / R&D
±74,012 SF
AVAILABLE NOW

180 BAYTECH DR.
SAN JOSE, CA 95112



PROJECT DETAILS & AMENITIES

CLASS A OFFICE / R&D BUILDING TOTALING ±74,012 SQUARE FEET

- Built in 1997 / Updated in 2021
- 16'6" floor-to-floor
- Ideal for high tech office, research and development users
- On-site parking at a ratio of 3.3/1,000
- 2,000 amps
- New restrooms and showers
- Web-based building automation system for HVAC and lighting
- Fiber-optic service
- Easy access to Highway 237 and Interstates 880 and 101
- Excellent North San Jose location
- Convenient access to nearby amenities
- Proximity to San Jose International airport

INTERIOR RENDERINGS



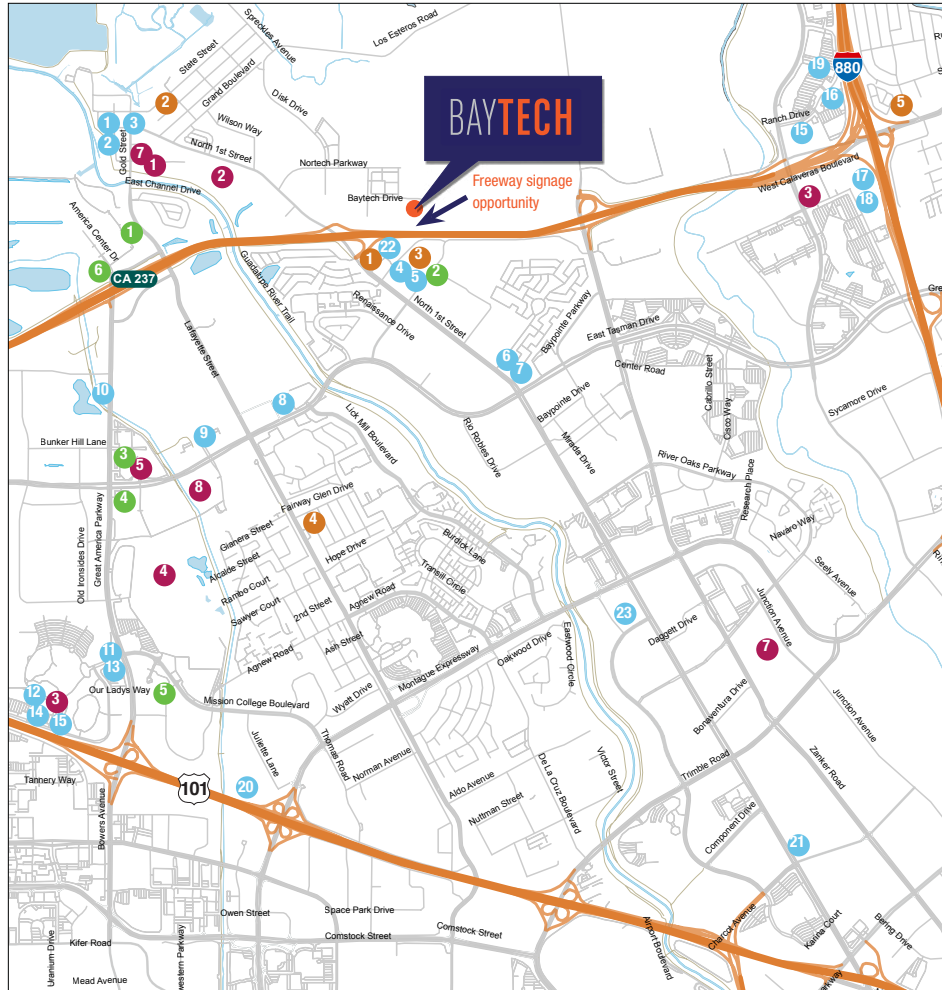
AVAILABILITY

±74,012 SF AVAILABLE NOW



AREA AMENITY MAP

CONVENIENT NORTH SAN JOSE LOCATION



RESTAURANTS

- 1 Rosita's De Basilio Deli & Market
- 2 Vahl's Restaurant & Cocktail
- 3 Maria Elena's of Alviso
- 4 Five Guys
- 5 Chick Fil A
- 6 Sento Sushi
- 7 Subway
- 8 Pho Khang
- 9 David's
- 10 Joe's Chinese Fast Food
- 11 Amarin Thai
- 12 Mexicali Grill
- 13 Bennigans
- 14 Tomatina
- 15 In N' Out Burger
- 16 Banana Leaf
- 17 Mayflower
- 18 Loving Hut
- 19 Black Angus Steakhouse
- 20 Pedro's Restaurant & Cantina
- 21 McDonalds
- 22 Starbucks
- 23 Kerrie's Cafe

SHOPPING/GROCERY

- 1 Fresh & Easy
- 2 Marina Market
- 3 Target
- 4 Fairway Glen Shopping Center
- 5 Milpitas Shopping Center

LODGING & CONFERENCE FACILITIES

- 1 Extended Stay America San Jose/Santa Clara
- 2 HYATT House San Jose/Silicon Valley
- 3 HYATT Regency Santa Clara
- 4 Hilton Santa Clara
- 5 Santa Clara Marriott
- 6 Aloft (Under Construction)

ADDITIONAL POINTS OF INTEREST

- 1 Alviso Health Center
- 2 Top Golf
- 3 AMC Mercado 20
- 4 California's Great America Theme Park
- 5 Santa Clara Convention Center
- 6 Bank of America
- 7 U.S. Post Office
- 8 Levi's Stadium

CA 237

237

Highway 237
frontage access



2-3 Miles

2-3 miles to I-880 to
East bay or I-101 to San
Francisco



5.9 Miles

to San Jose
International Airport



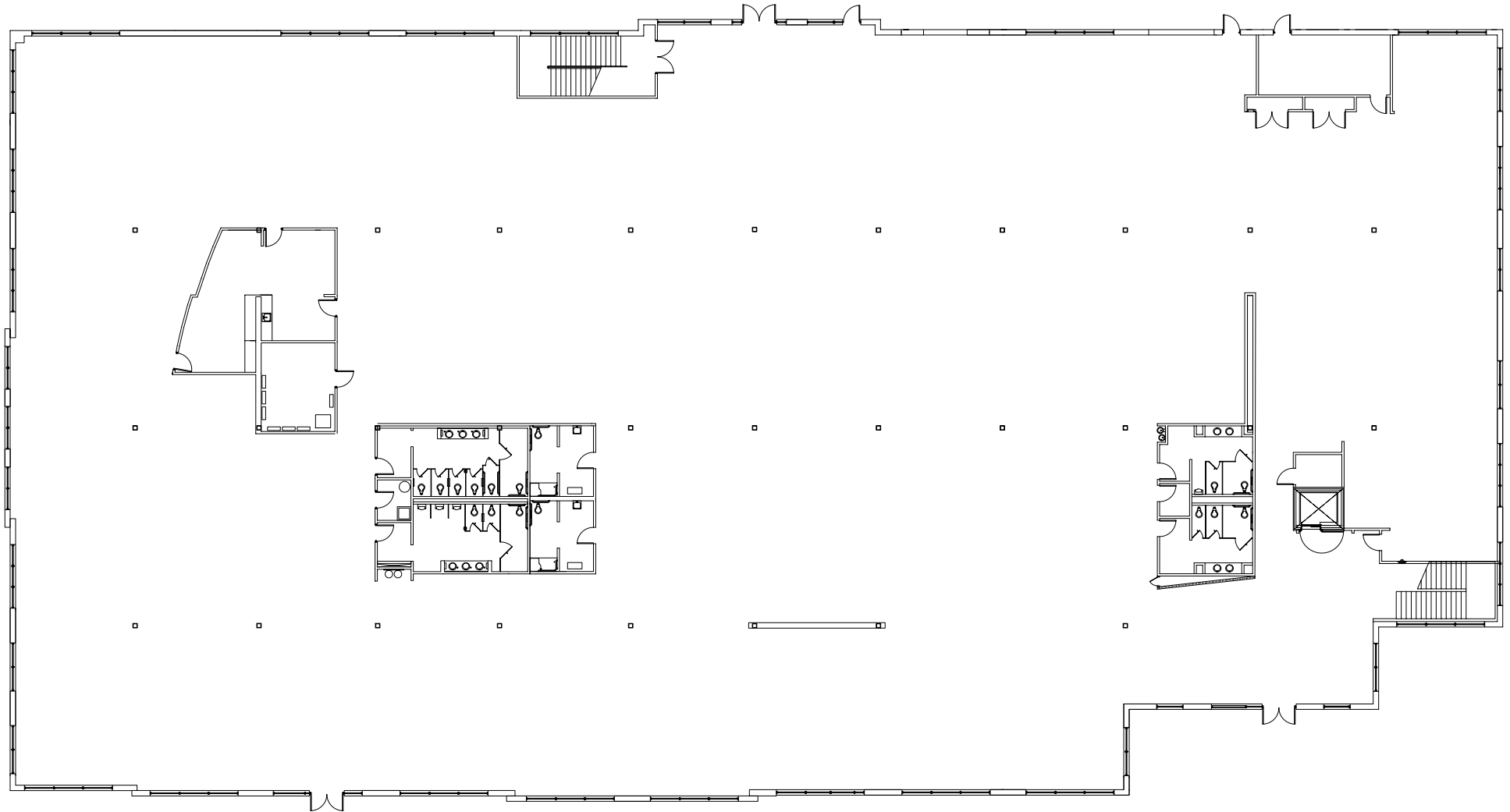
6.3 Miles

To CalTrain station

Baytech Business Park offers 300,000 square feet of beautifully landscaped office and R&D space ideal for high tech users. The business park is conveniently located in North San Jose with easy access to area restaurants and services. Offering visibility directly from Highway 237, Baytech Business Park is accessible from 101, 880 and less than 15 minute drive from San Jose International Airport.

FIRST FLOOR - ±37,006 SF

Total Available - ±74,012 SF



PLAN NOT TO SCALE

MARK BODIE

+1 650 480 2212

mark.bodie@jll.com

CA License #: 01941415

SCOTT MATHISEN

+1 650 480 2182

scott.mathisen@jll.com

CA License #: 00898695

SEAN TOOMEY

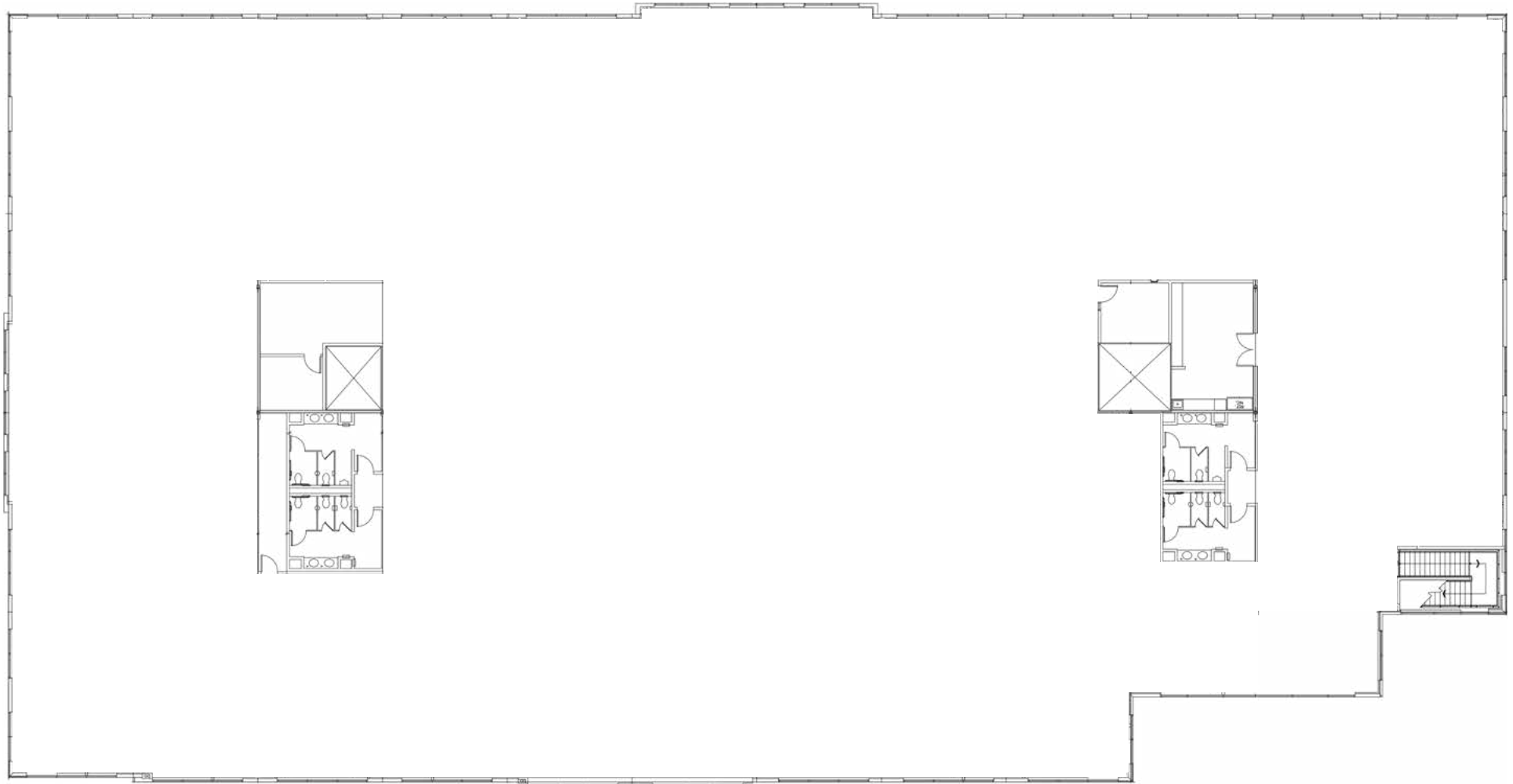
+1 408 219 8858

sean.toomey@jll.com

CA License #: 01350215

SECOND FLOOR - ±37,006 SF

Total Available - ±74,012 SF



PLAN NOT TO SCALE

MARK BODIE

+1 650 480 2212
mark.bodie@jll.com
CA License #: 01941415

SCOTT MATHISEN

+1 650 480 2182
scott.mathisen@jll.com
CA License #: 00898695

SEAN TOOMEY

+1 408 219 8858
sean.toomey@jll.com
CA License #: 01350215





180 BAYTECH DRIVE
SAN JOSE, CA 95112

MARK BODIE

+1 650 480 2212
mark.bodie@jll.com
CA License #: 01941415

SCOTT MATHISEN

+1 650 480 2182
scott.mathisen@jll.com
CA License #: 00898695

SEAN TOOMEY

+1 408 219 8858
sean.toomey@jll.com
CA License #: 01350215



Jones Lang LaSalle Brokerage, Inc.
License #: 01856260