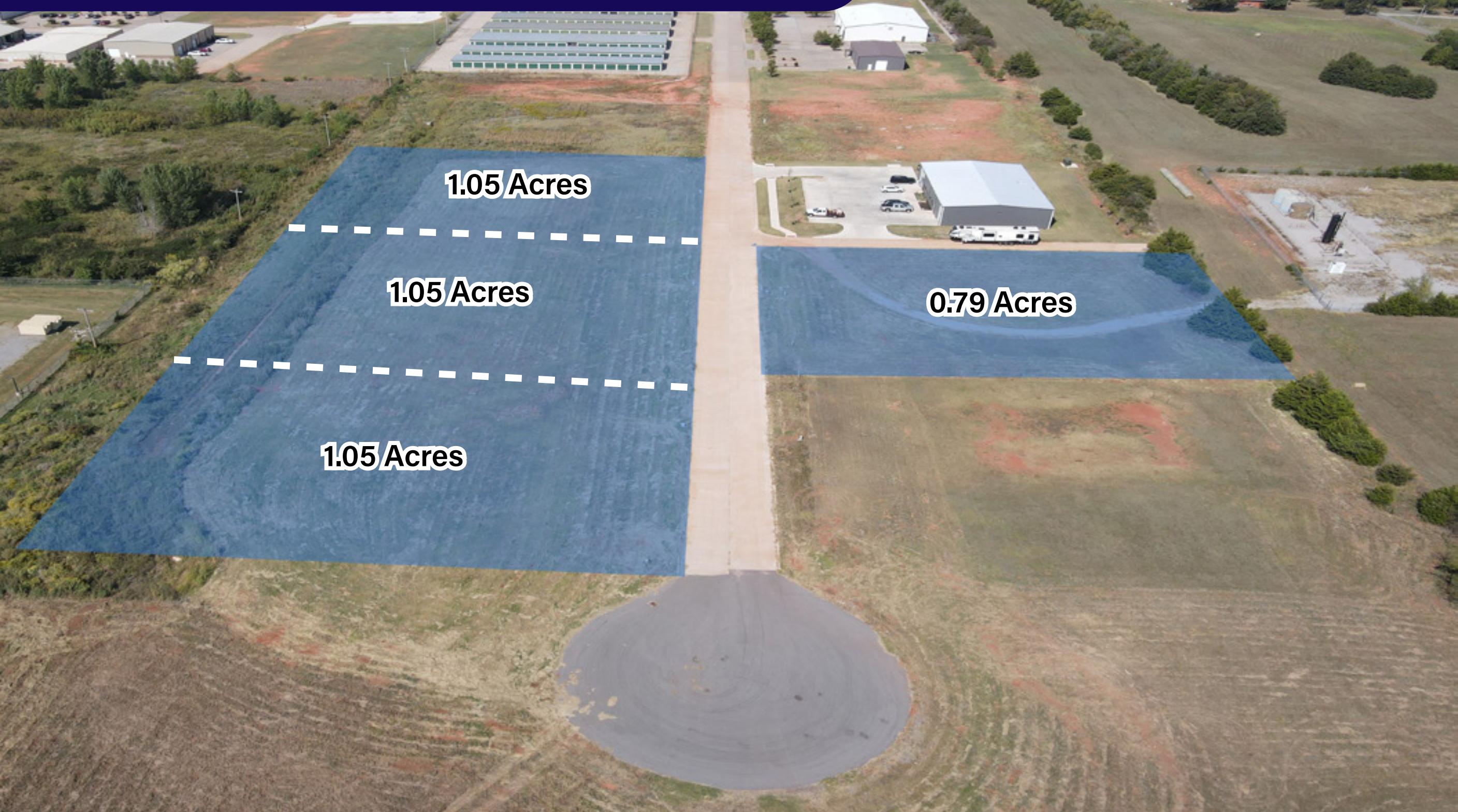


FOR SALE

S SYMES LN & HWY 152, MUSTANG, OK, 73064



1.05 Acres

1.05 Acres

1.05 Acres

0.79 Acres

HORIZON
COMMERCIAL REAL ESTATE

Nicole Mayes
Senior Vice President
405.209.3992

Spencer Bost
Associate
405.628.7481







www.horizoncreok.com



PROPERTY INFORMATION

3.94 ACRES AVAILABLE

PROPERTY TYPE	VACANT LAND
PRICE PER SF	\$5.00 PSF
ZONING	COMMERCIAL (C-5)
COUNTY	CANADIAN COUNTY

-  FOUR CALCSEPARATE LOTS ARE NOW AVAILABLE IN THIS GROWING DEVELOPMENT DISTRICT!
-  EACH LOT HAS EASY ACCESS VIA S SYMES LN.
-  SITE IDEAL FOR STORAGE, DISTRIBUTION, STUDIOS, CONTRACTORS & MORE!
-  NEARBY PROVIDERS INCLUDE WALMART, LOWE'S, HAMPTON INN, ST ANTHONY HOSPITAL
-  CLOSE PROXIMITY TO I-40, I44, I240
-  LOCATED JUST 7 MILES WEST OF WILL ROGERS WORLD AIRPORT OFF OF HWY 152

ALTHOUGH THE INFORMATION HAS BEEN OBTAINED FROM TRUSTWORTHY SOURCES, HORIZON CRE MAKES NO GUARANTEES, ASSURANCES, OR WARRANTIES ABOUT THE COMPLETENESS OR ACCURACY OF THE DATA. THIS PROPERTY IS BEING PRESENTED WITH THE POSSIBILITY OF ERRORS AND OMISSIONS. MODIFICATIONS MAY OCCUR THAT ALTER THE FACTS OF THIS PRESENTATION WITHOUT NOTICE.



Nicole Mayes | **Spencer Bost**
 Senior Vice President | Associate
 405.209.3992 | 405.628.7481
www.horizoncreok.com



**15.89 Acres
Also Available**

1.05 Acres

0.79 Acres

1.05 Acres

1.05 Acres

**Army National
Guard**

S Symes Ln.

Hwy 152



HORIZON
COMMERCIAL REAL ESTATE

Nicole Mayes
Senior Vice President
405.209.3992

Spencer Bost
Associate
405.628.7481
www.horizoncreok.com



Easement Line Table

Line #	Direction	Length
0.1	S 89°39'28" E	133.00'
0.2	S 89°39'28" E	76.00'
0.3	N 90°00'00" W	33.00'
0.4	S 89°39'28" E	39.00'
0.5	S 89°39'28" E	39.00'
0.6	N 90°00'00" E	41.00'
0.7	N 90°00'00" W	348.74'
0.8	N 90°00'00" E	176.00'
0.9	N 90°00'00" W	186.00'

