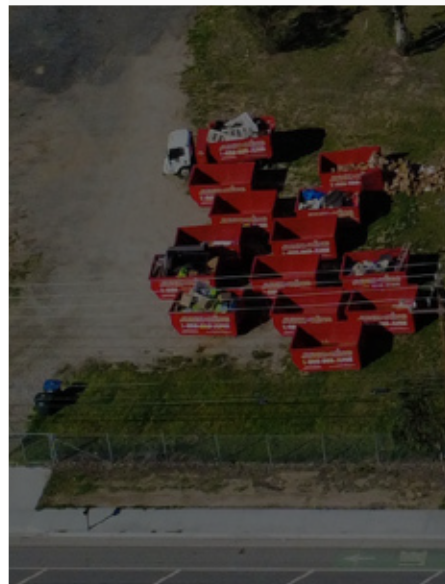




13,100 SF
1.79 Acres

FOR LEASE
OR SALE



2282 GOETZ RD, PERRIS, CA 92570

NEWMARK

2282 Goetz Rd,
Perris, CA 92570



Property Highlights



Ideal for Equipment Sales and Rental, Specifically Catering to Water Trucks and Dump Trucks



3 (Three) Separate Buildings - Two (2) Warehouses and One (1) Office



Fully Fenced and Secured Site



600 Amps Electrical Supply to Each Warehouse Building



Completely Paved (80% Concrete) and Fenced Yard



General Industrial (GI) Zoning, the Heaviest Industrial Zoning in City of Perris

Property Description

GBA: ± 13,100 SF
± 12,000 SF (2 x 6,000 SF)
Office: ± 1,100 SF
Lot Size: ± 77,972 SF
Year Built: Warehouse - 1989
Office - 2014

No. of Buildings: 3 (2 Warehouses and 1 Office)
Building Height: 17 Ft.
Construction: Metal
Parking: 20 Spaces
GL Door: Total 4 (2 per warehouse)
12' x 14'

ACCESSIBILITY MAP

PERRIS - DOWNTOWN METROLINK STATION



W 4th St.

E 4th St.

Redlands Ave

E Nuevo Rd

San Jacinto Ave

215

SOUTHERN CALIFORNIA RAILWAY MUSEUM



SOUTH PERRIS TRAIN STATION



2282 GOETZ RD,
PERRIS CA

74

Ethanac Rd

Ethanac Rd

Case Rd

74

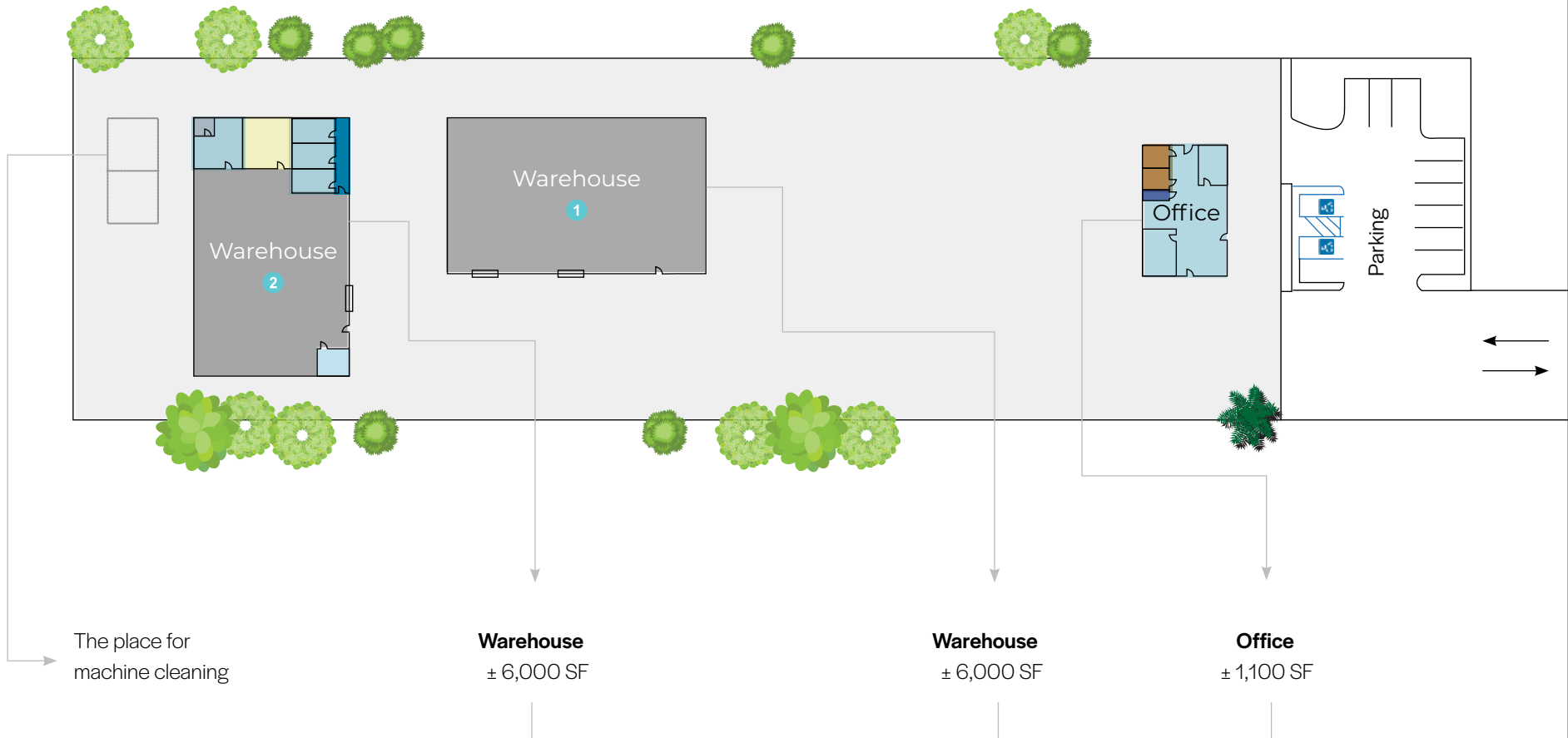
2 MILES

Palomar Rd



Site Plan

- Office
- Warehouse
- Restroom
- Cage/Storage
- Server
- Aisle



* Actual scale may vary

Total GBA
± 13,100 SF

Lot Size
± 77,972 SF

Goetz Rd

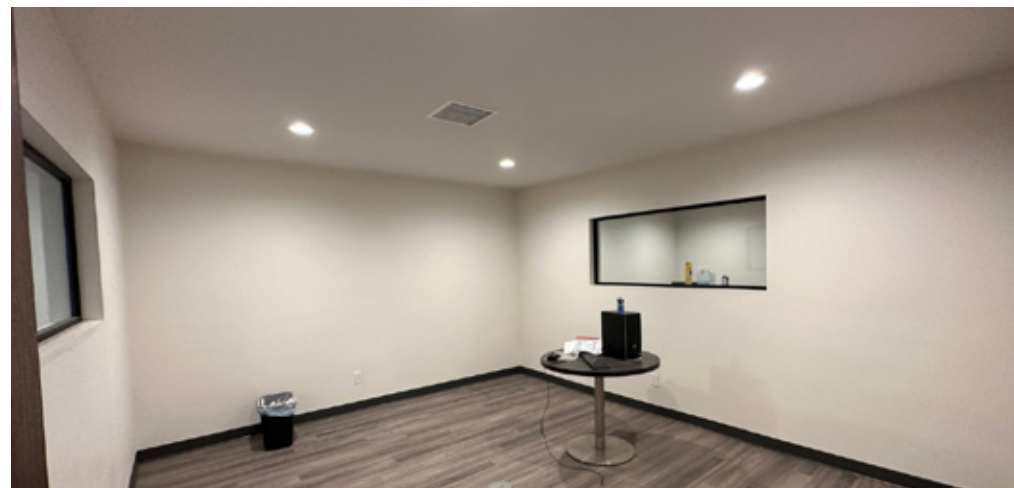
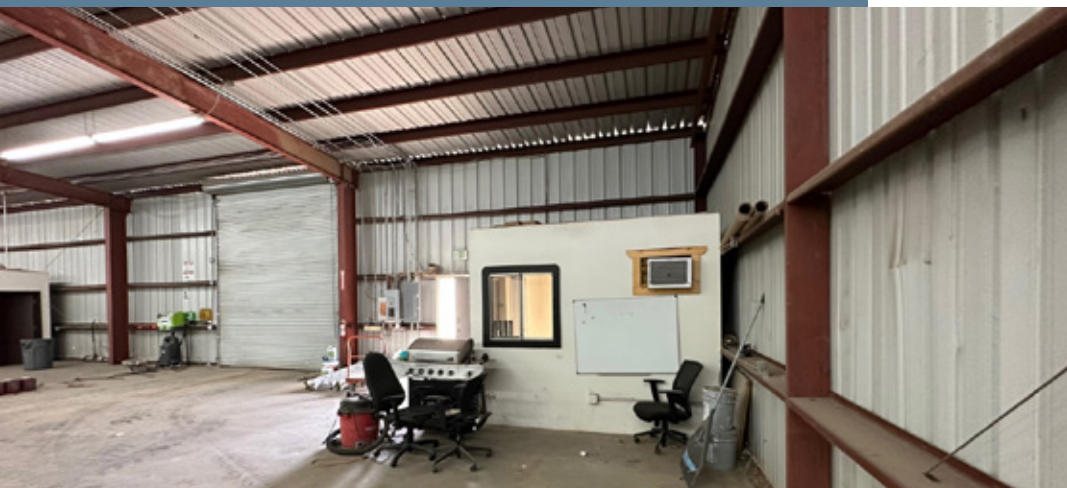
Office Building



Warehouse Building 1



Warehouse Building 2



Yard



Demographics

Demographics	2 Mile Radius
2025 Population	16,619
2025 Households	4,462
2025 Housing Units	4,641
Bachelor's Degree or Higher	9.9%

Demographics	2 Mile Radius
2025 Businesses	519
2025 Employees	7,816
2025 Median Age	31.5
2025 Avg. Household Size	3.72
Daytime Workers	5,605
Daytime Residents	9,000



REGIONAL MAP



Contacts:

Josh Hayes
Senior Managing Director
t 949.378.5766
josh.hayes@nmrk.com
CA RE Lic. #01300731

David Noblitt
Senior Managing Director
t 310.259.8564
david.noblitt@nmrk.com
CA RE Lic. #01961575

Brent Koo
Senior Managing Director
t 949.608.2090
brent.koo@nmrk.com
CA RE Lic. #01915382

Lex Yoo
Senior Managing Director
t 213.596.2019
lex.yoo@nmrk.com
CA RE Lic. #01879695

Corporate License #01355491

NEWMARK

The information contained herein has been obtained from sources deemed reliable but has not been verified and no guarantee, warranty or representation, either express or implied, is made with respect to such information. Terms of sale or lease and availability are subject to change or withdrawal without notice.