

An aerial photograph of a 0.63-acre corner lot. The lot is outlined in a thick teal line. It contains a single-story building with a dark roof and a large overhang. In front of the building is a paved parking lot with a blue SUV, a white van, and a motorcycle. The lot is bordered by a chain-link fence. To the right of the lot is a road labeled '20TH STREET'. In the background, there is a larger, modern building with a glass facade and a parking lot with several cars.

0.63-acre corner lot
(±27,600 SF)

FOR SALE AT LAND VALUE

1919 S. ORANGE BLOSSOM TRAIL
ORLANDO, FL 32805



PROPERTY DETAILS

This freestanding commercial property is located along **South Orange Blossom Trail** in Orlando and is being offered at **land value**, providing flexibility for a future owner-user, investor, or redevelopment concept.

The site sits on a **0.63-acre corner lot** with approximately **135 feet of frontage** along a high-traffic corridor seeing **30,000+ vehicles per day**. The property benefits from convenient access to **SR-408 and I-4**, allowing easy connectivity to Downtown Orlando, SoDo, and surrounding submarkets.

Originally constructed in the mid-20th century and later remodeled, the existing building may offer reuse potential; however, the primary value lies in the land and zoning. The property is zoned **Neighborhood Center (NC) in unincorporated Orange County**, supporting a variety of commercial uses consistent with the zoning designation.

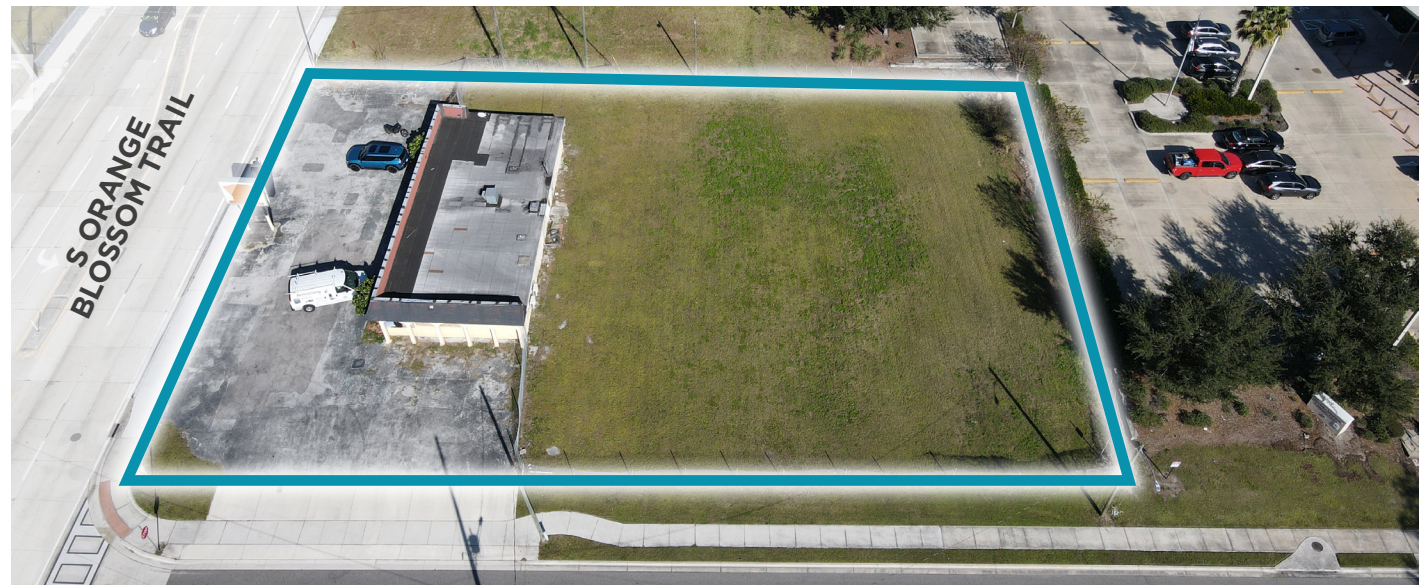
This offering presents a well-located opportunity for buyers seeking visibility, access, and long-term flexibility.

- Standalone commercial site offered at land value
- 0.63-acre corner lot (±27,600 SF)
- 135' frontage on Orange Blossom Trail
- 30,000+ AADT
- Neighborhood Center (NC) zoning
- Located in unincorporated Orange County
- Easy access to SR-408 and I-4
- Quick connectivity to Downtown Orlando and SoDo
- Existing building may offer reuse potential
- Ideal for owner-user, investor, or redevelopment strategy

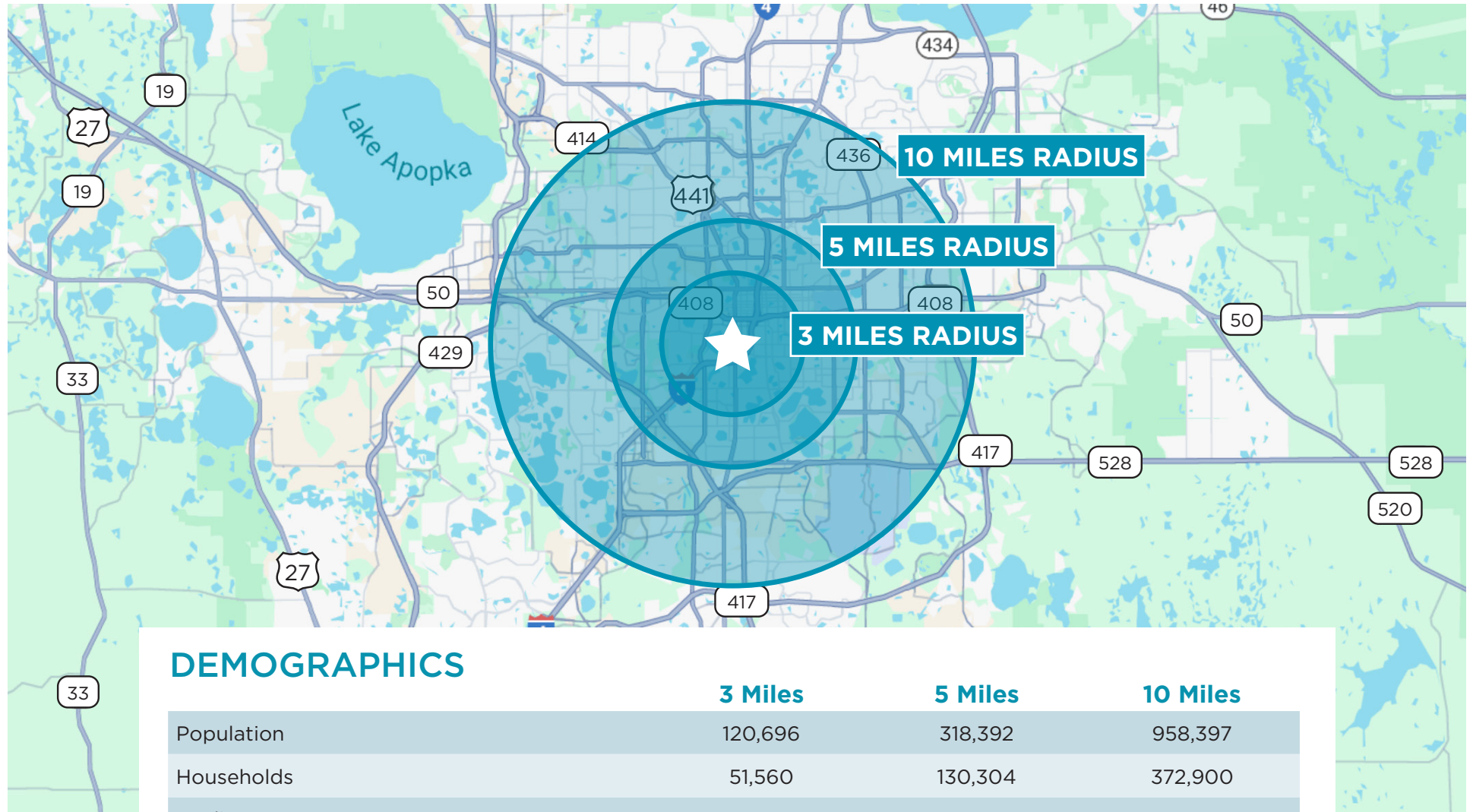
[CLICK HERE FOR VIDEO](#)



PARCEL OVERVIEW



DEMOGRAPHICS



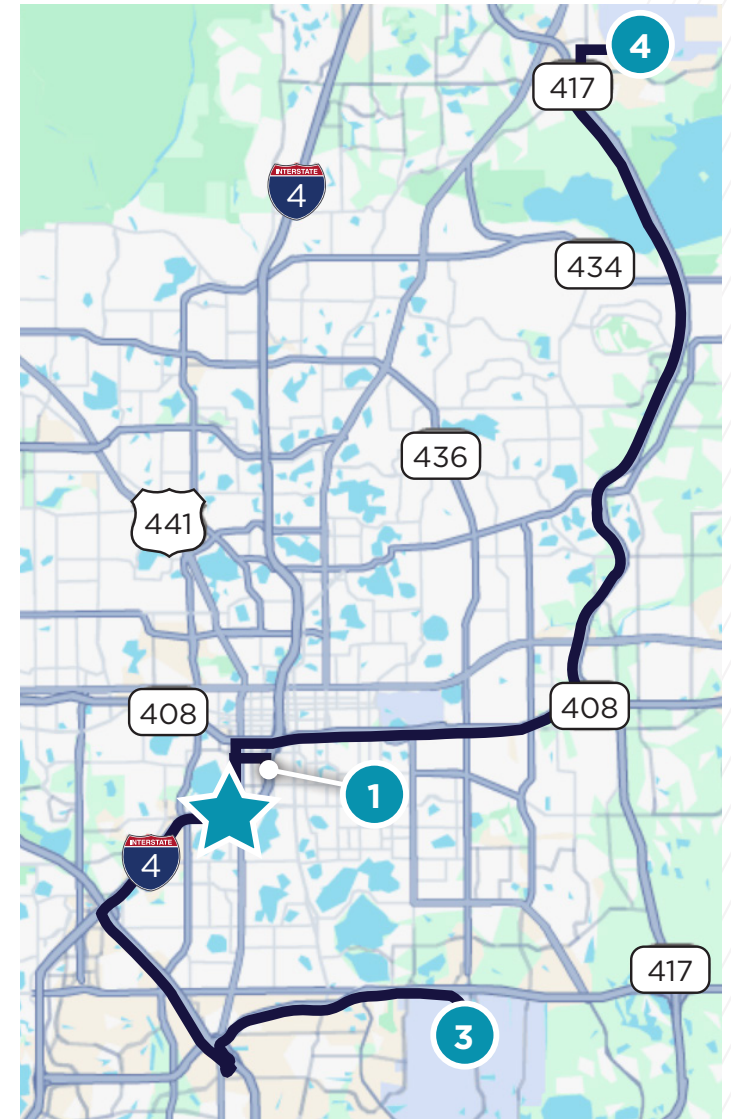
DEMOGRAPHICS

	3 Miles	5 Miles	10 Miles
Population	120,696	318,392	958,397
Households	51,560	130,304	372,900
Median Age	37.50	37.2	38.2
Median HH Income	\$51,157	\$54,020	\$58,715
Daytime Employees	159,222	294,096	635,930
Population Growth '24 - '29	0.8%	0.7%	0.7%
Household Growth '24 - '29	0.8%	0.7%	0.7%

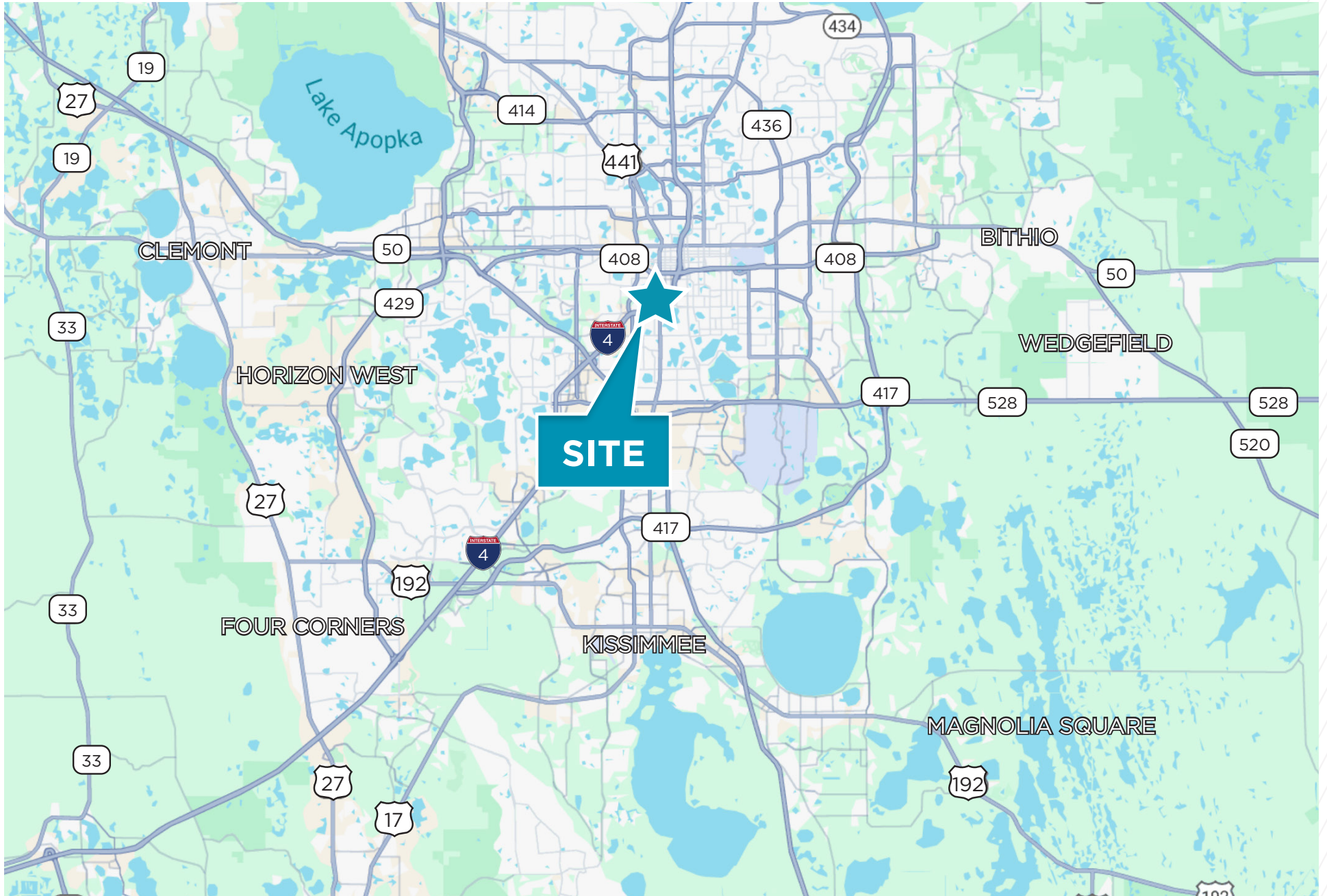
PUBLIC TRANSPORTATION

Commuter Rail		Drive	Distance
1	Orlando Health/Amtrak (SunRail - Florida Department of Transportation)	4 minutes	2 miles
2	Orlando (Silver Meteor - Amtrak Silver Star - Amtrak)	4 minutes	2 miles

Airport		Drive	Distance
3	Orlando International	21 minutes	11 miles
4	Orlando Sanford International	37 minutes	28.9 miles



LOCATION MAP





FOR MORE INFORMATION, CONTACT:

AMY CALANDRINO

Director

+1 407 618 8240

amy.calandrino@cushmanwakefield.com

20 North Orange Avenue

Orlando, Florida 32801

+1 407 841 8000

www.cushmanwakefield.com

©2025 Cushman & Wakefield. All rights reserved. The information contained in this communication is strictly confidential. This information has been obtained from sources believed to be reliable but has not been verified. NO WARRANTY OR REPRESENTATION, EXPRESS OR IMPLIED, IS MADE AS TO THE CONDITION OF THE PROPERTY (OR PROPERTIES) REFERENCED HEREIN OR AS TO THE ACCURACY OR COMPLETENESS OF THE INFORMATION CONTAINED HEREIN, AND SAME IS SUBMITTED SUBJECT TO ERRORS, OMISSIONS, CHANGE OF PRICE, RENTAL OR OTHER CONDITIONS, WITHDRAWAL WITHOUT NOTICE, AND TO ANY SPECIAL LISTING CONDITIONS IMPOSED BY THE PROPERTY OWNER(S). ANY PROJECTIONS, OPINIONS OR ESTIMATES ARE SUBJECT TO UNCERTAINTY AND DO NOT SIGNIFY CURRENT OR FUTURE PROPERTY PERFORMANCE.

