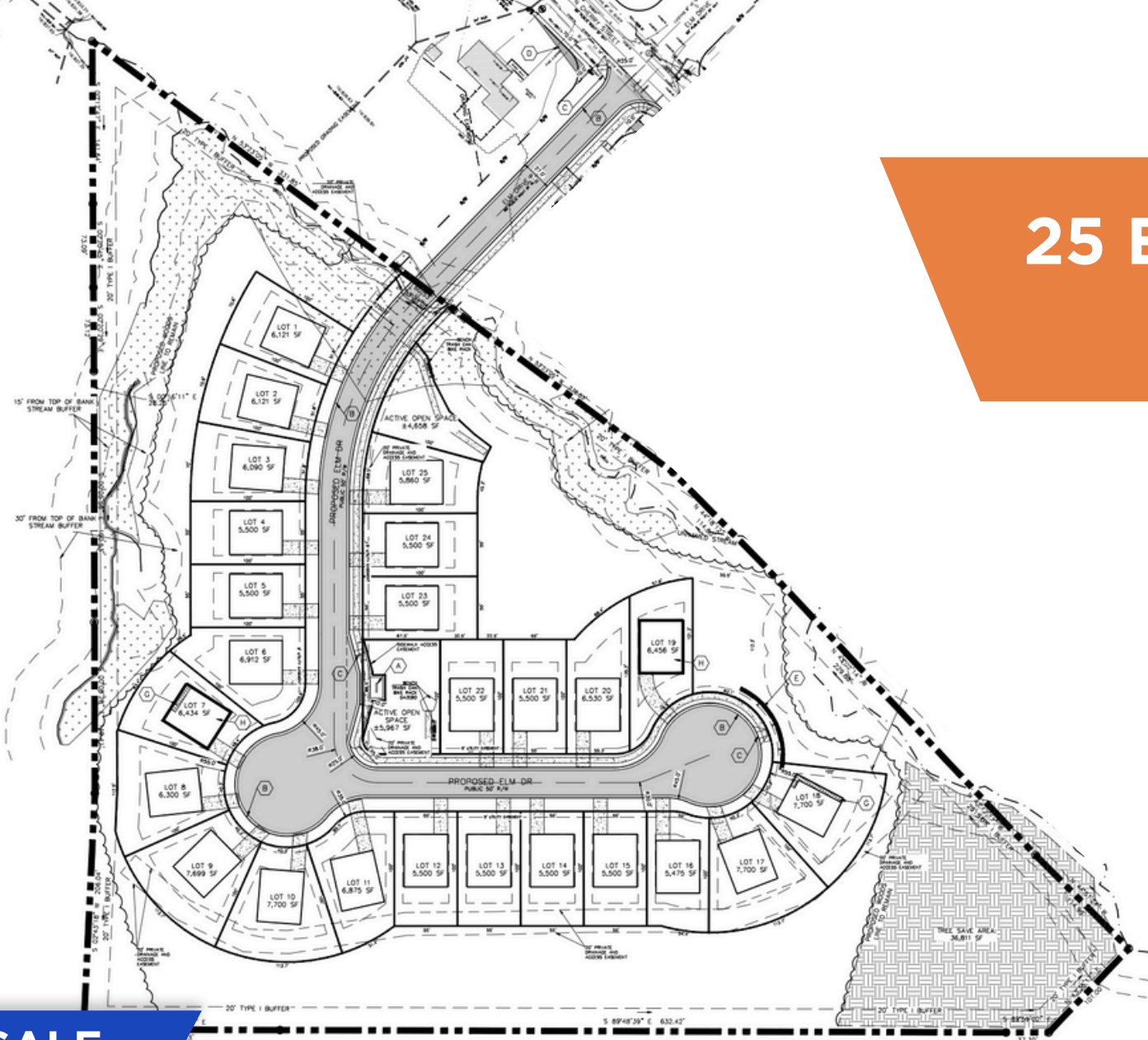


**25 ENTITLED
LOTS**



FOR SALE

**0 ELM DRIVE
WINSTON-SALEM, NC 27105**

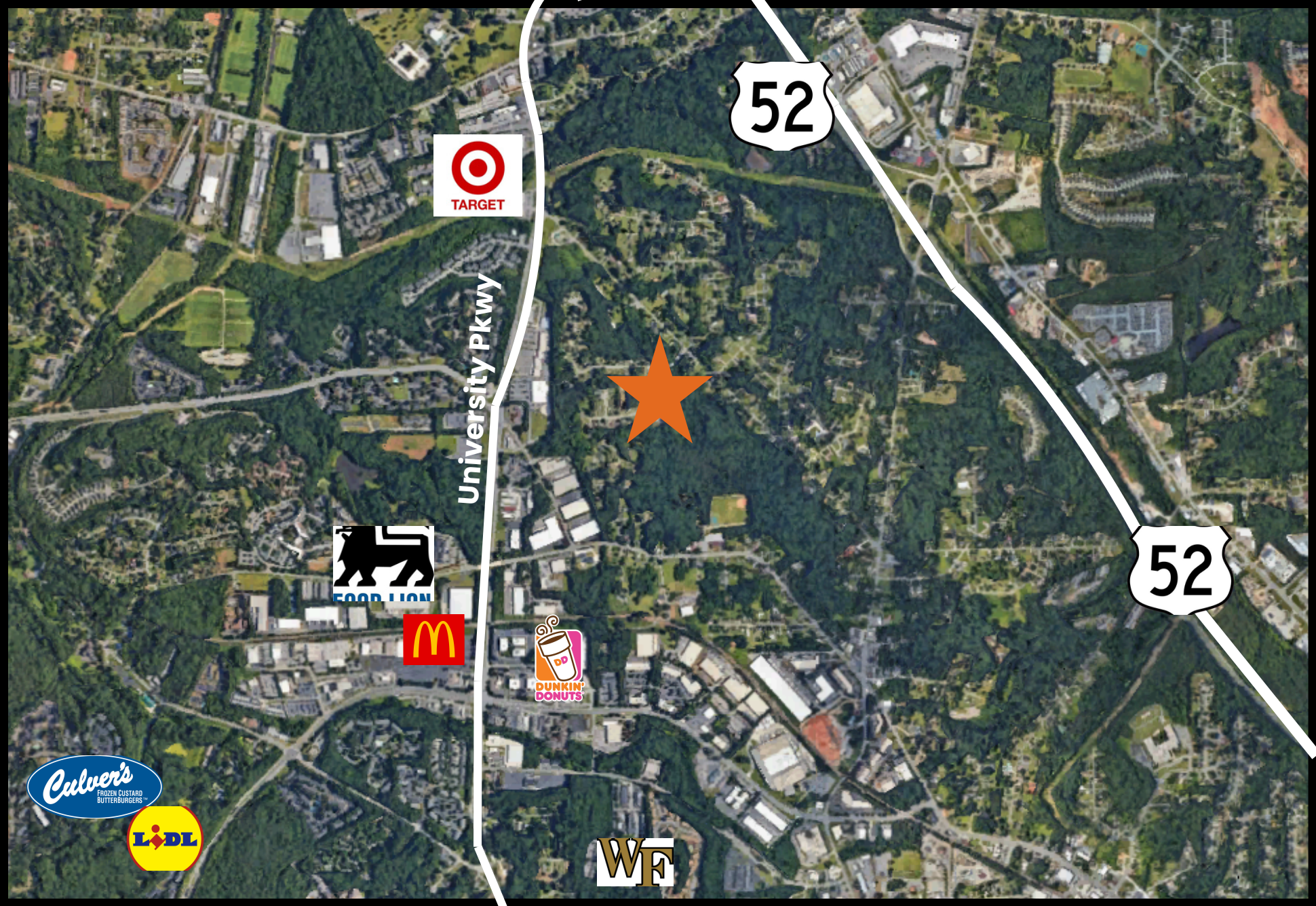
Baldwin
PROPERTIES

PROPERTY HIGHLIGHTS

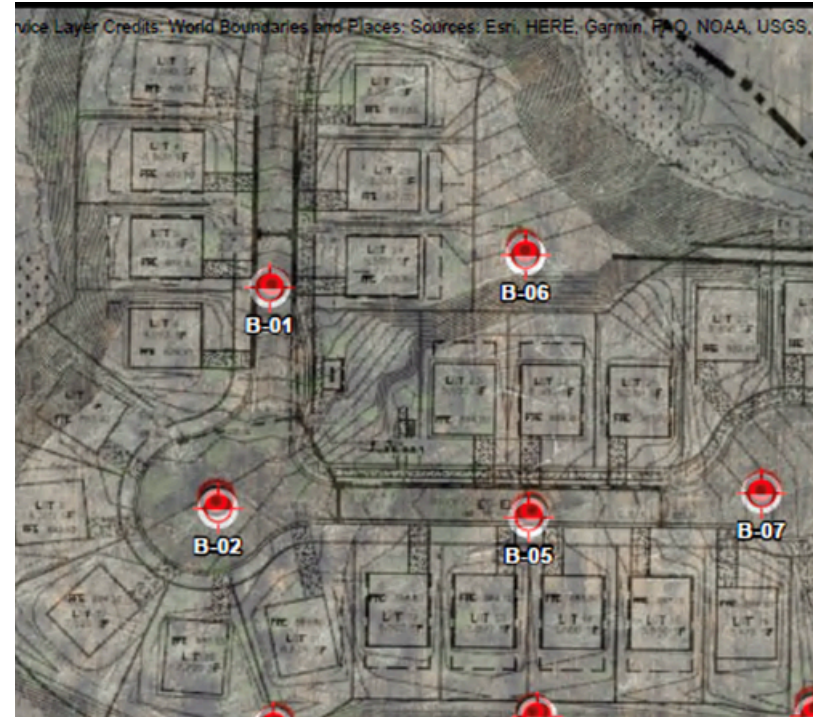
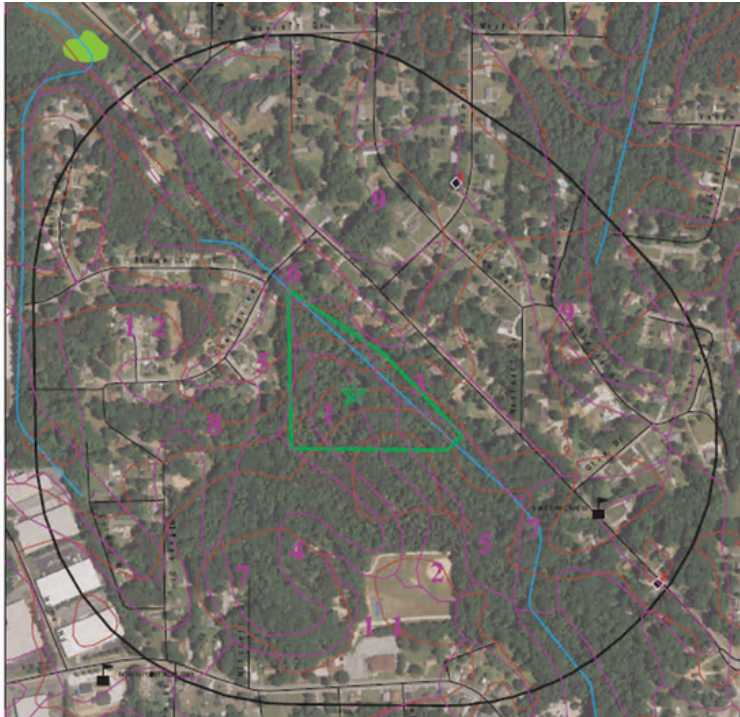
ACREAGE:	9.9 +/-	SITE PLAN:	APPROVED
LOTS:	25	SURVEY	PHASE-1
ASKING PRICE:	\$599,000	PERMITS	READY
WATER:	AT ROAD	ZONING:	RESIDENTIAL
SEWER:	AT ROAD		



Location Map



PROPERTY OVERVIEW



Delivering 25 Entitled Lots in the University Parkway area of Northern Winston-Salem. Lots are fully entitled, and Seller is delivering an approved site plan, wetlands report, environmental phase 1, geotechnical report, and will be ready for permits. Developers will be able to provide lots in a booming Triad area in desperate need of housing. Local amenities include grocery (Target, Neighborhood Wal Mart, Aldi), parks (Oak Summit Park and Bethabara Park are), dining (Chipotle, Biscuitville, Dairi-O's, and many local restaurants), and other commercial activity (trampoline parks, banking, car washes, and more). Help bring much needed entry-level homes to the market in a desirable location.



Baldwin
PROPERTIES