

Watermark Office Center



Chip Bowling

616.915.9080
cbowling@bradleyco.com



Teresa Datema

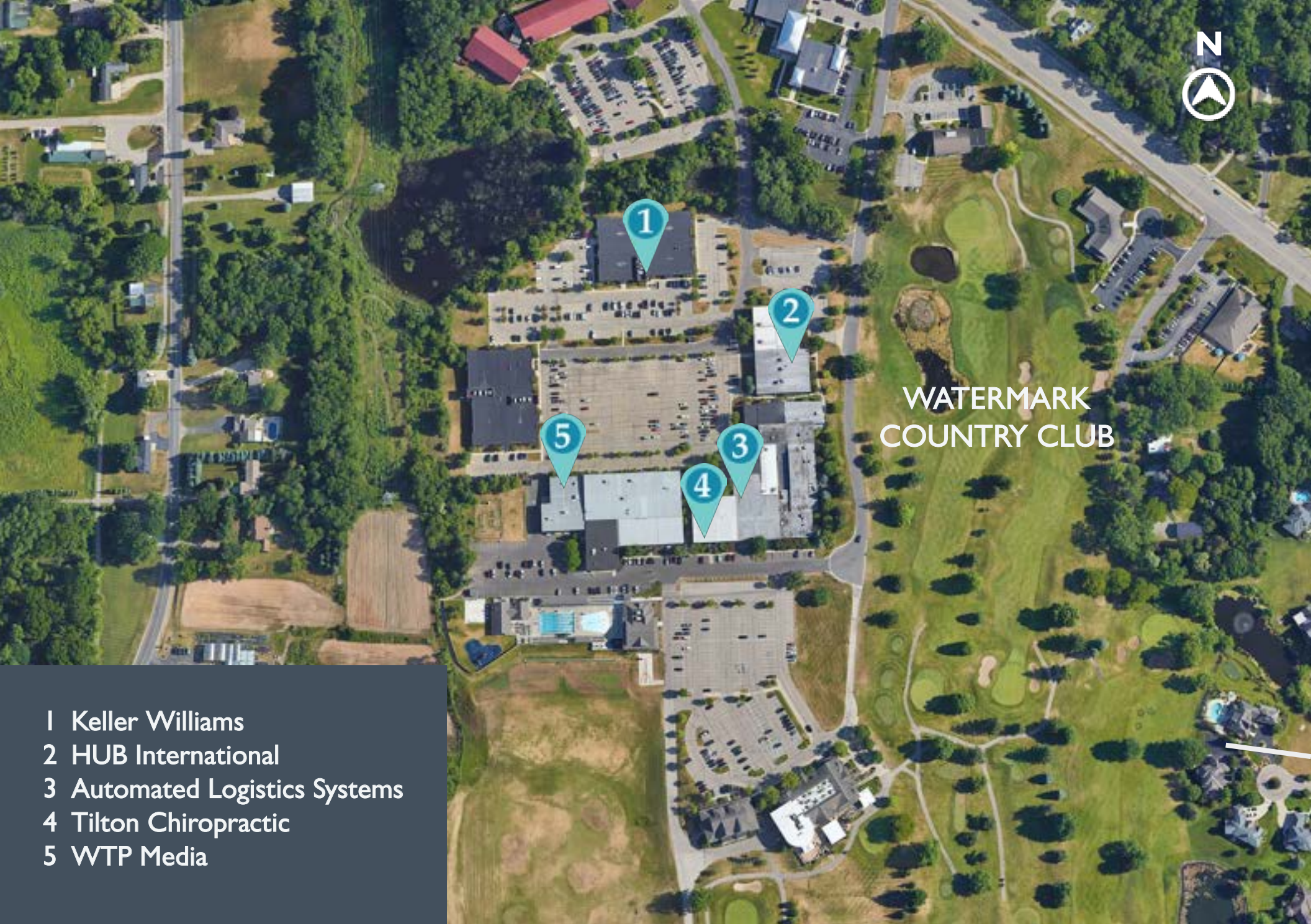
616.309.7395
tdatema@bradleyco.com

Bradley Company West Michigan
220 Lyon St NW, Suite 400
Grand Rapids, Michigan 49503



1593 & 1595 GALBRAITH AVE. SE, GRAND RAPIDS, MI

FOR LEASE



WATERMARK COUNTRY CLUB

- 1 Keller Williams
- 2 HUB International
- 3 Automated Logistics Systems
- 4 Tilton Chiropractic
- 5 WTP Media



LEASE TERMS

MEZZANINE SECOND FLOOR | SUITE 201

Rate: \$15.00

RSF: 1,693

Lease Structure: Modified Gross Lease
Tenant is responsible for base rent and stated terms

SUITE 200

Rate: \$24.00

RSF: 2,225

Lease Structure: Modified Gross Lease
Tenant is responsible for base rent and stated terms

SUITE 202 (Sublease)

Rate: \$22.00

RSF: 776

Lease Structure: Modified Gross Lease
Tenant is responsible for base rent and stated terms

Tenant is responsible for suite janitorial, voice and data, suite electric & gas (estimated \$2.00/RSF)

PROFESSIONALLY LANDSCAPED EXTERIOR



VIEW FROM GALBRAITH AVE. LOOKING NORTH

ENTRANCE TO MEZZANINE SUITE



MEZZANINE SECOND FLOOR



COMMON AREA HALLWAY



VIEW OVERLOOKING GOLF COURSE



MEZZANINE SECOND FLOOR





1593 & 1595 GALBRAITH AVE. SE, GRAND RAPIDS, MI | BRADLEY COMPANY

SUITE 200



2,225 SQUARE FEET



MODERN, EXPOSED CEILINGS

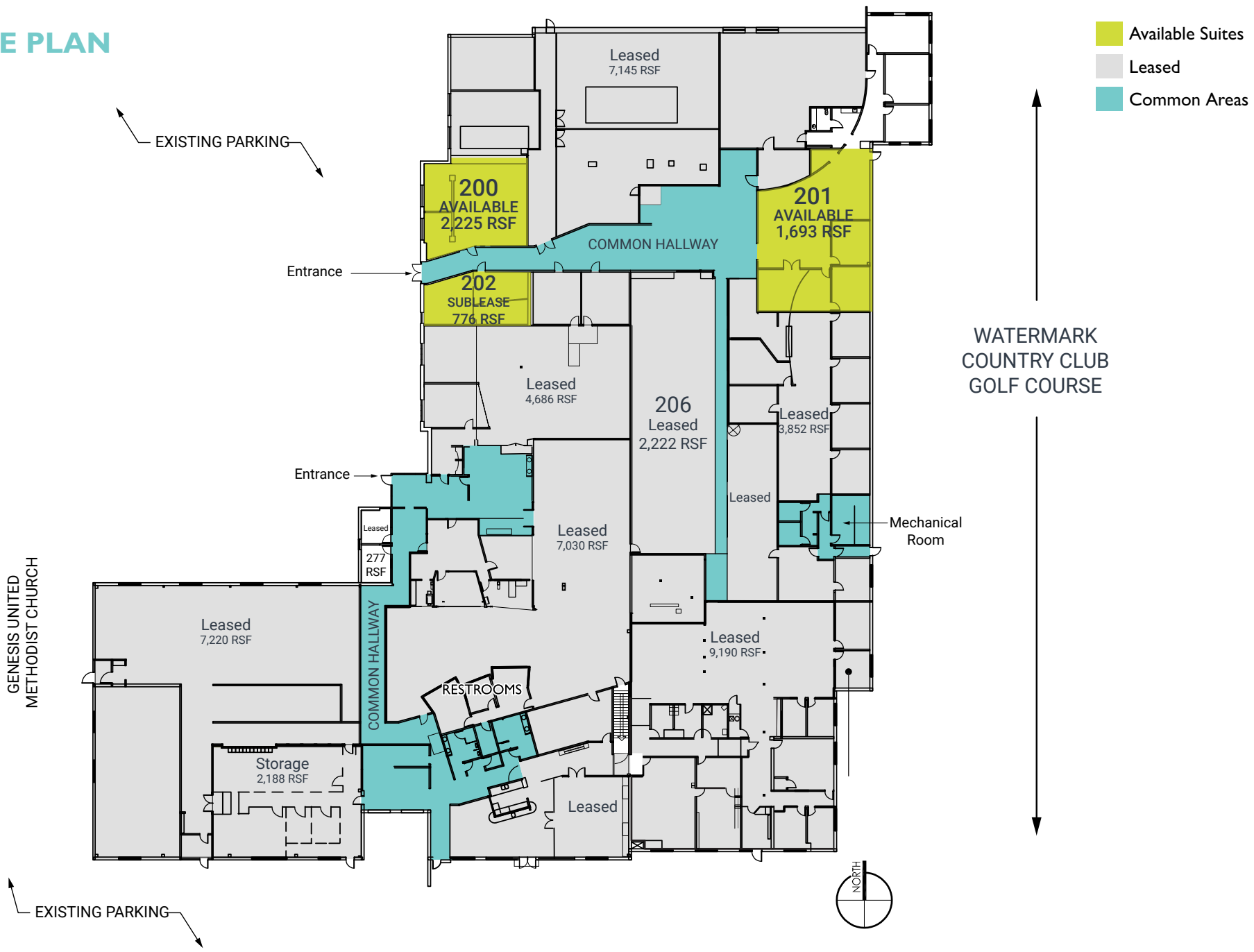


SUITE 200 CONFERENCE ROOM





SITE PLAN



The **right** location leads to **great** occupancy

Making for a solid investment

WATERMARK OFFICE COMPLEX | 1593 & 1595 GALBRAITH AVE. SE, GRAND RAPIDS, MI

- Direct access to Watermark Country Club
- Located right in the middle of Cascade, Forest Hills, and Ada communities
- Great leasing history, with many long-term clients
- Amenities available within the 250,000 SF Watermark Office Complex: Free on-site parking, professional office environment, views overlooking the golf course, pool, restaurant, outdoor patio & bar, & common area restrooms.





**WATERMARK
COUNTRY CLUB**

**1593
GALBRAITH**

**1595
GALBRAITH**

**FREE
ON-SITE
PARKING**

Chip Bowling
Senior Vice President
616.915.9080
cbowling@bradleyco.com

Teresa Datema
Advisor
616.309.7395
tdatema@bradleyco.com

Bradley Company
220 Lyon St NW, Suite 400
Grand Rapids, MI 49503
bradleyco.com

