

NEW SIGN BAND TYP.

NEW METAL CANOPY - EXTENDS 12" FROM FACE OF FACADE

NEW DARK BRONZE ALUMINUM COPING

NEW PIER AT EXISTING BRICK

NEW ALUMINUM HORIZONTAL BAND

EXISTING BRICK TO REMAIN

EXISTING BRICK TO REMAIN

NEW METAL CURB
HEIGHT VARIES WITH
SIDEWALK SLOPE

NEW DARK BRONZE STOREFRONT
WITH RECESSED ENTRY

NEW BUILT UP PARAPET WITH
OVERHANG

NEW EIFS

NEW RECLAIMED WOOD SIDING
- WIDTH OF STOREFRONT



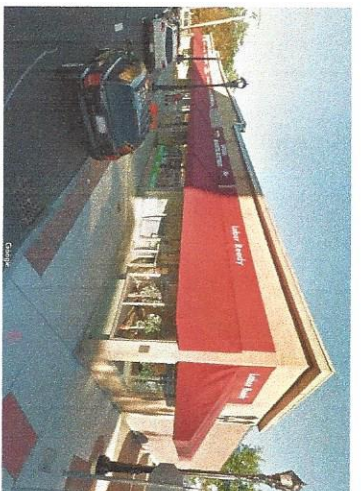
Option 2 - n.t.s.

183 Concord Street

Realty Trust

183 - 199 Concord Street - Framingham, MA

Pricing | 06.19.17



Existing Conditions



Key Plan





View of proposed front elevation with lighting – n.t.s.

*Commercial Investment Real Estate
Retail Leasing and Sales Specialist*

**The
Stratton Group LLC**

81 John Alden Rd.
Plymouth, MA 02360
Cell: 508-922-2001
Office/Fax: 508-224-0800
Email: inestrattongroup@hotmail.com
Philip F. McGuinness

183 Concord Street
Realty Trust

183 - 199 Concord Street – Framingham, MA

Signage standards | 11.20.17

183-199 Concord Street and Central Business district (CB) Sign Design Criteria

Signage Design Requirements

- Tenant shall submit one set of sign shop drawings for review and approval by Landlord. Fabrication or installation of the Tenant's signage shall not commence before the Landlord's approval of the sign shop drawings
- Tenant's signage shall be illuminated from lighting above, provided by Landlord.
- Tenant's signage shall be installed on Tenant's storefront surface on the sign face with 1" standoffs and centered over the width of the tenants space.
- All wall signs shall be located entirely in the designated sign band area and shall be uniform across the building related to structure, shape, materials, placement, vertical dimension, and color of the adjacent tenants signage (black letters).
- Tenant is required to design, fabricate, install and maintain all Tenant signage. The Tenant's sign shall be limited to the Tenant's approved trade name as stated in the lease.
- The use of a corporate logo or other established corporate insignia are not permitted.
- One sign is allowed per storefront elevation.
- The power source for storefront signs must originate in Tenant's electrical panels and must be regulated by Tenant's seven-day, twenty-four-hour calendar time clock, set in accordance with the Landlord's operating hours.

Permitted Signage Types

- Externally illuminated individual letters
- Black in color

Signage Size Criteria

- Vertical sign height is 18" high.
- Total wall sign face area for each business shall not exceed one square foot for each linear foot of building frontage of the business or 30sf, whichever is greater.

Signage Backboard

- 30" x 14" wide Hardboard base – integrally colored – off white



Key Plan