

360

FURMAN STREET

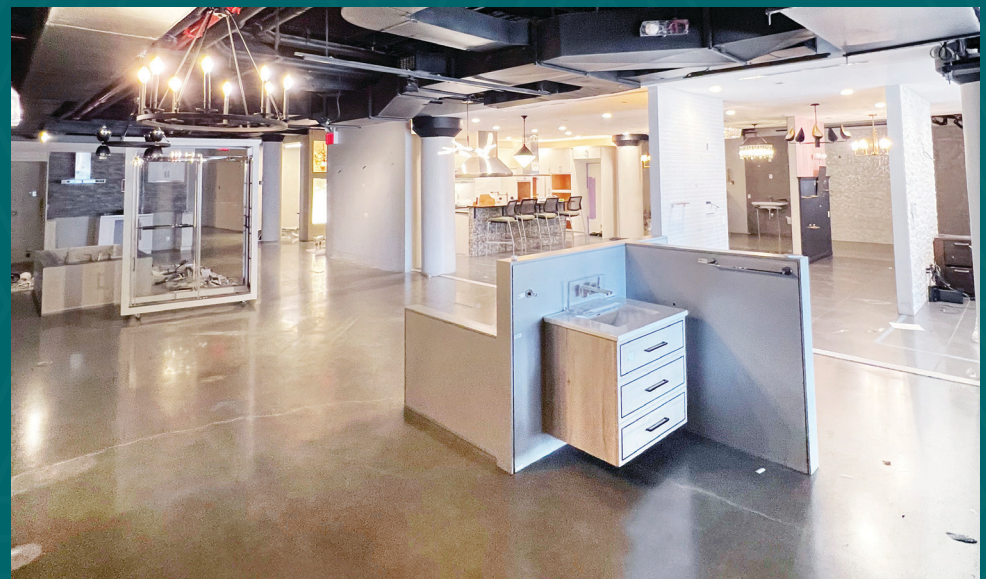


BROOKLYN, NY

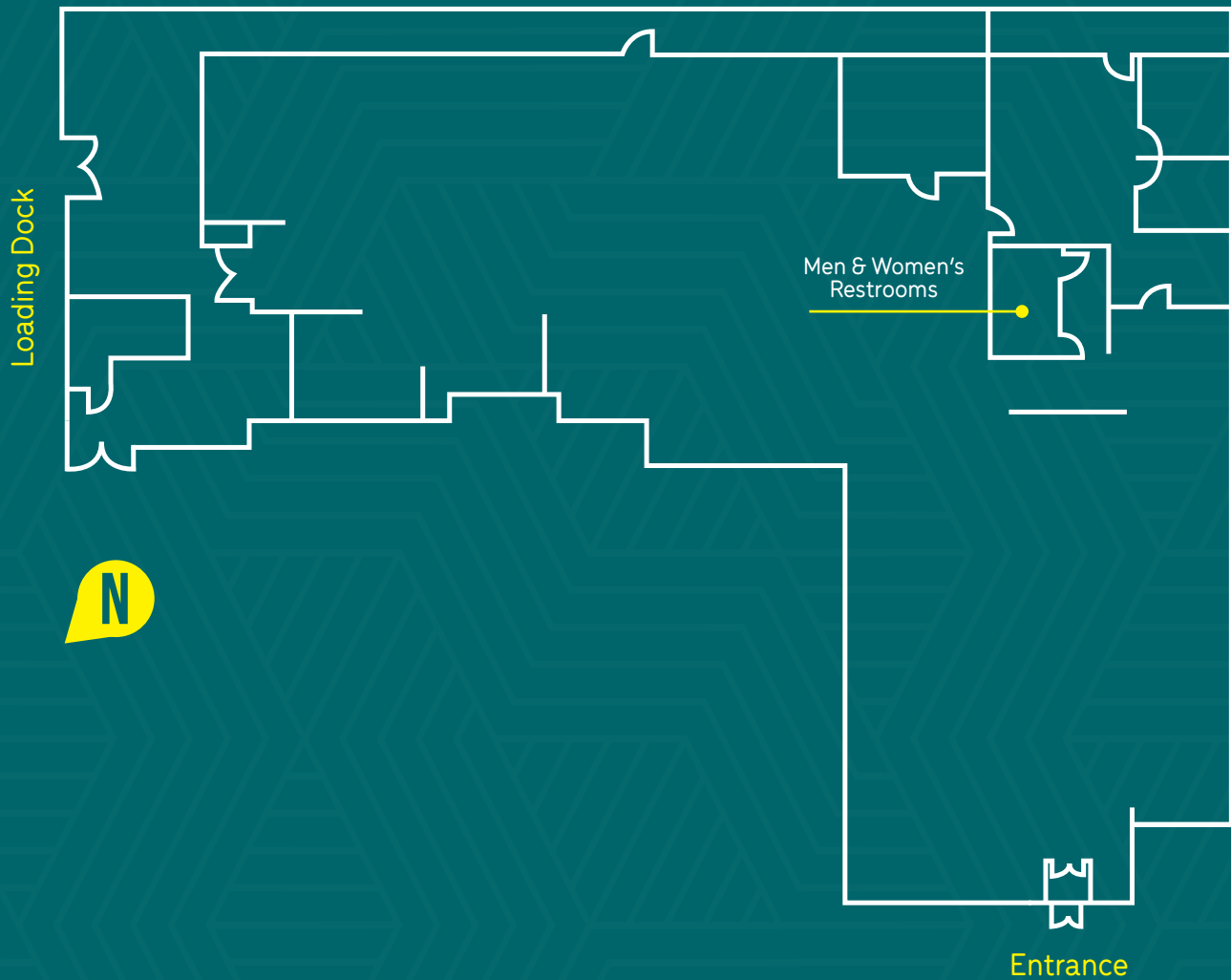
CBRE

13,263 SF

GROUND FLOOR RETAIL | SUBLEASE



13,263 SF



BRIDGE PARK DRIVE



PARKING



Public parking
attended
garage in building

NYC FERRY



14 minutes to Manhattan
from Pier 6

Quick access to neighboring
ferry points

MTA BUS



B63 MTA bus brings
riders to Pier 6

SUBWAY



10 minutes to
2 3 4 5 R
Borough Hall station



360

FURMAN STREET

WILLIAM JORDAN

917 861 5090

william.jordan@cbre.com

CBRE

© 2024 CBRE, Inc. All rights reserved. This information has been obtained from sources believed reliable, but has not been verified for accuracy or completeness. You should conduct a careful, independent investigation of the property and verify all information. Any reliance on this information is solely at your own risk. CBRE and the CBRE logo are service marks of CBRE, Inc. All other marks displayed on this document are the property of their respective owners, and the use of such logos does not imply any affiliation with or endorsement of CBRE.

