

# 1402 West Lake Street

Minneapolis, MN 55408

# FOR SALE



## Price is Negotiable...Make an Offer

Own a piece of Minneapolis history and shape the future of Uptown! This iconic building is a powerhouse opportunity for investors, developers, and entrepreneurs. With versatile commercial spaces and a rooftop that's second to none in the Twin Cities, this property demands attention and delivers endless possibilities.

- Available Immediately
- Building Size - 16,937 USF
- 3 Floors, Rooftop, and Sky Deck
- Commercial Kitchen Capability
- 2026 Proposed Taxes \$102,320

Jeff Houg

D: 952-300-9545

M: 612-889-2242

[jhoug@shcre.com](mailto:jhoug@shcre.com)

[www.shcre.com](http://www.shcre.com)



# 1402 West Lake Street

Minneapolis, MN 55408

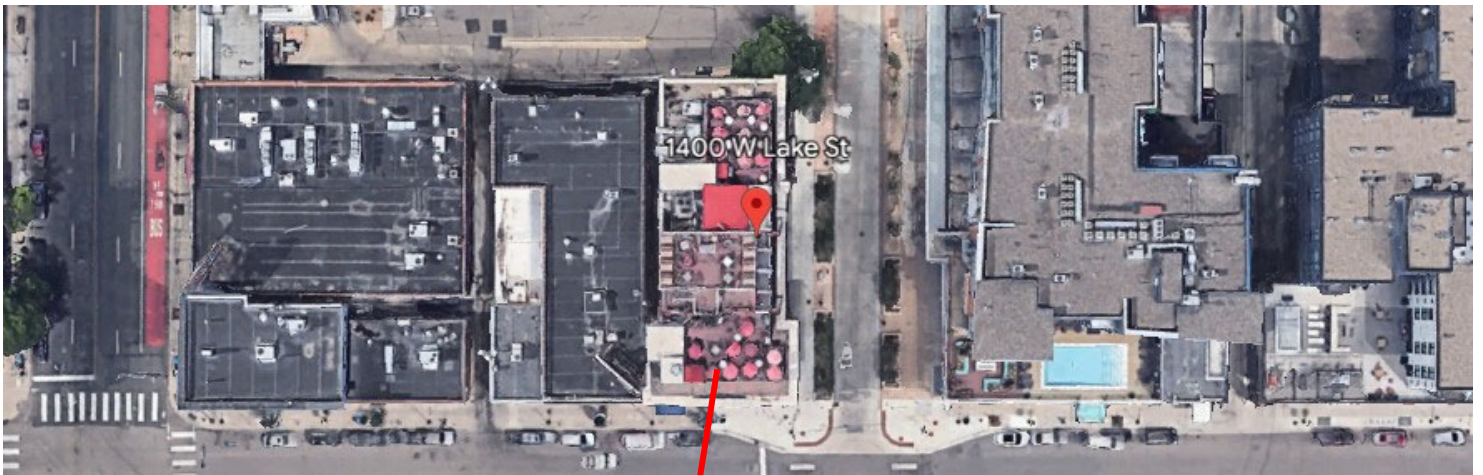
Jeff Houg

D: 952-300-9545

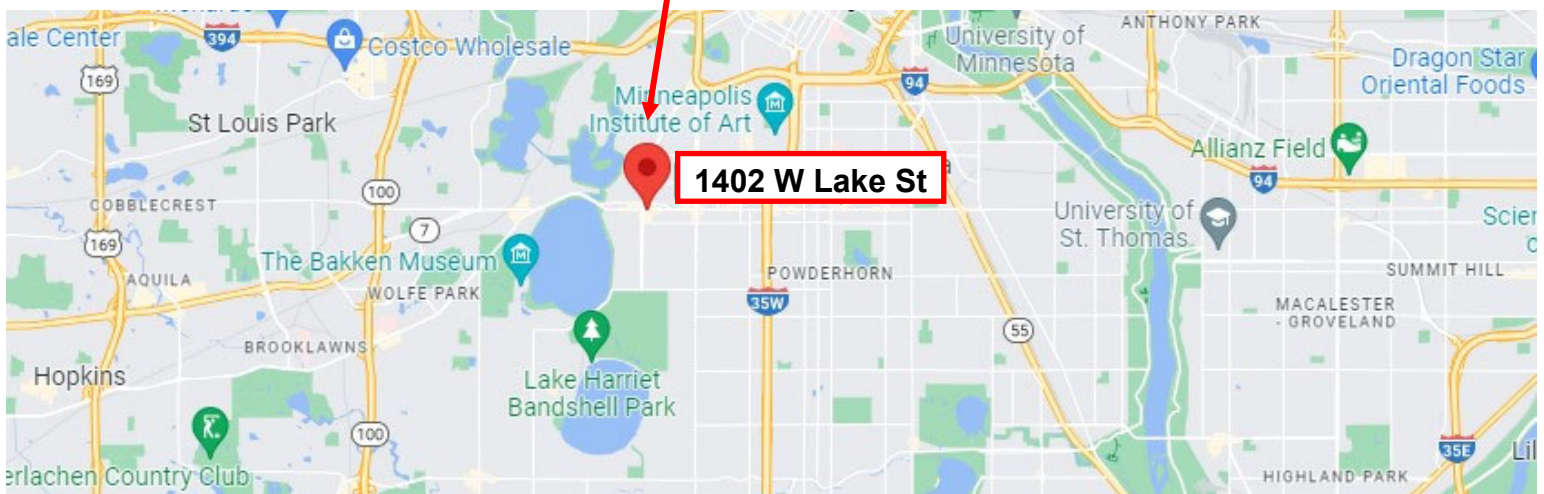
M: 612-889-2242

[jhoug@shcre.com](mailto:jhoug@shcre.com)

[www.shcre.com](http://www.shcre.com)



- Convenient access to interstates 94, 394 and 35W
- Highly walkable to the Bde Maka Ska trails and Chain of Lakes parks
- Variety of transportation options



# 1402 West Lake Street

Minneapolis, MN 55408

Jeff Houg

D: 952-300-9545

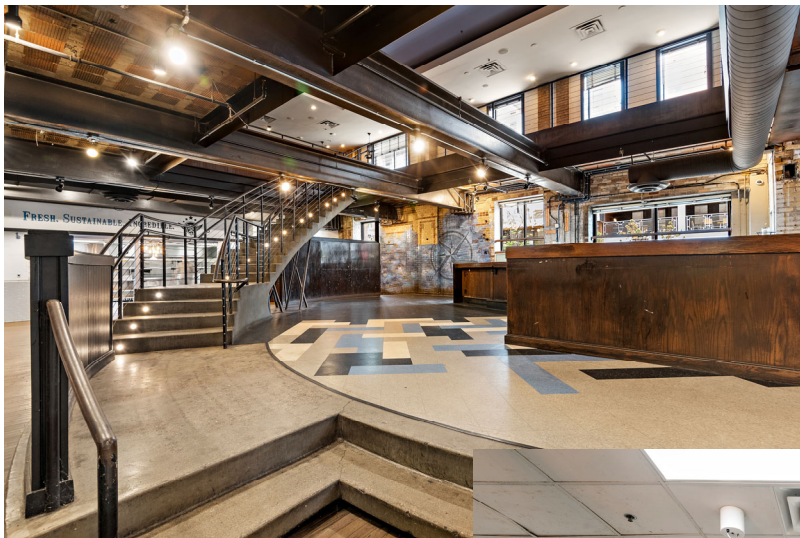
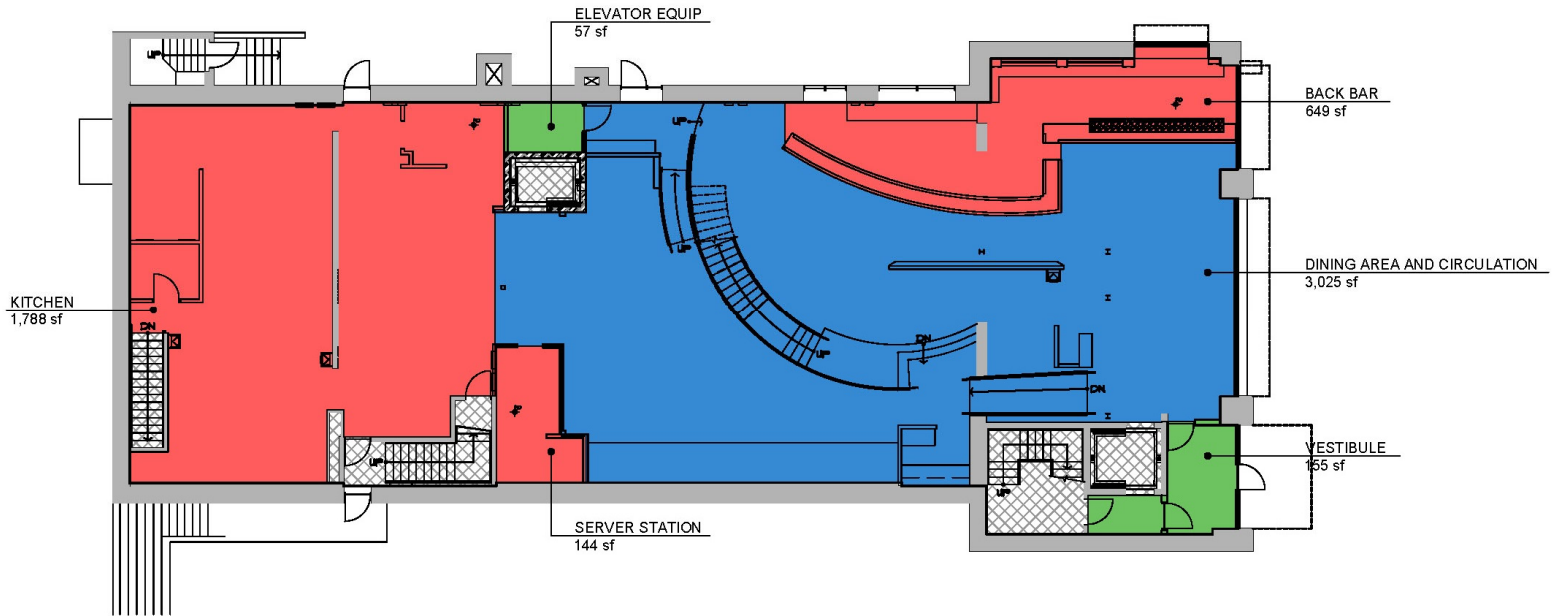
M: 612-889-2242

jhoug@shcre.com

www.shcre.com



## First Floor 5,818 USF



# 1402 West Lake Street

Minneapolis, MN 55408

Jeff Houg

D: 952-300-9545

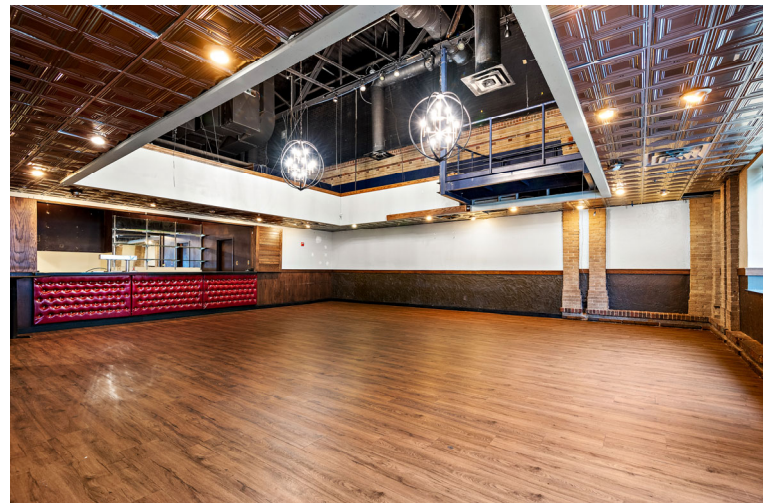
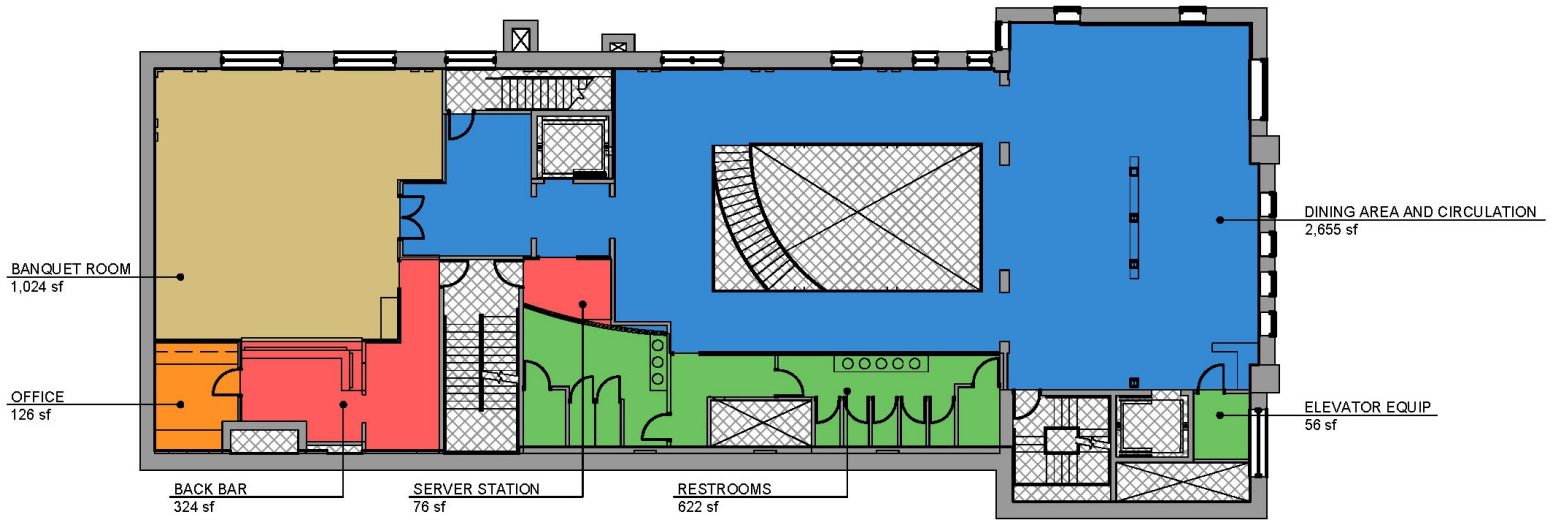
M: 612-889-2242

jhoug@shcre.com

www.shcre.com



## Second Floor 4,883 USF



# 1402 West Lake Street

Minneapolis, MN 55408

Jeff Houg

D: 952-300-9545

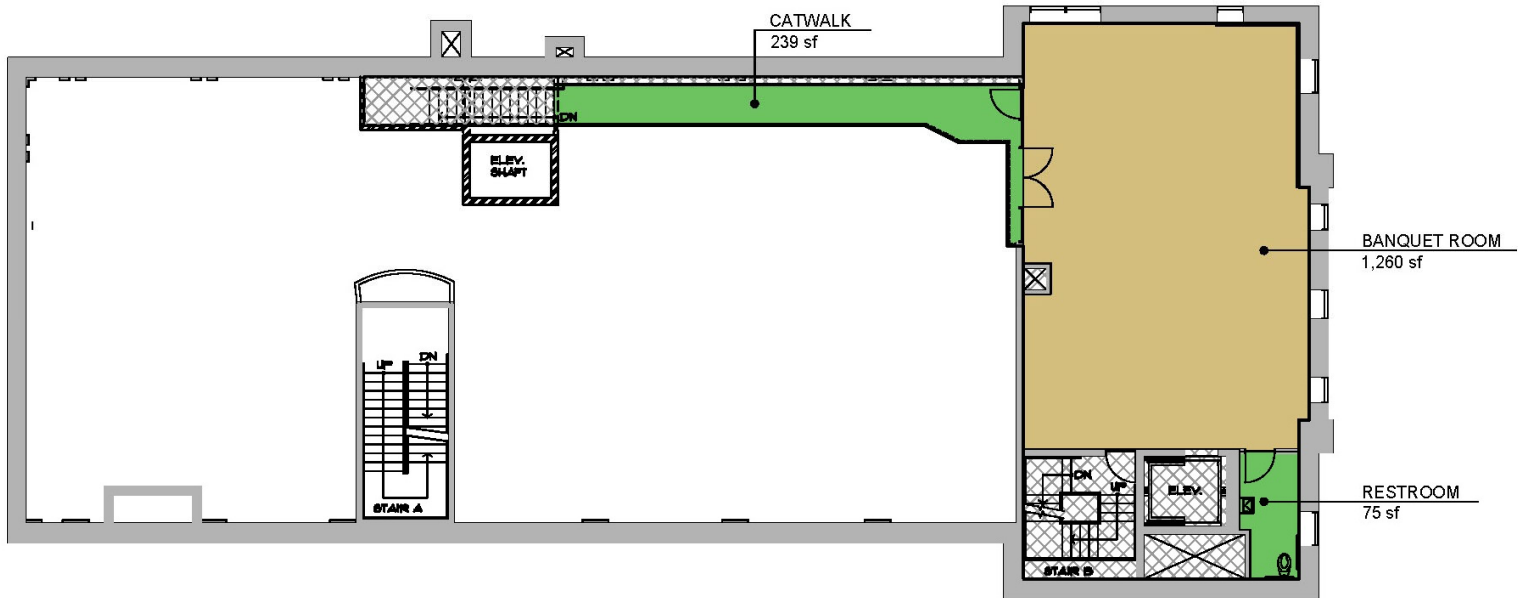
M: 612-889-2242

[jhoug@shcre.com](mailto:jhoug@shcre.com)

[www.shcre.com](http://www.shcre.com)



## Third Floor / Mezzanine 1,574 USF



# 1402 West Lake Street

Minneapolis, MN 55408

Jeff Houg

D: 952-300-9545

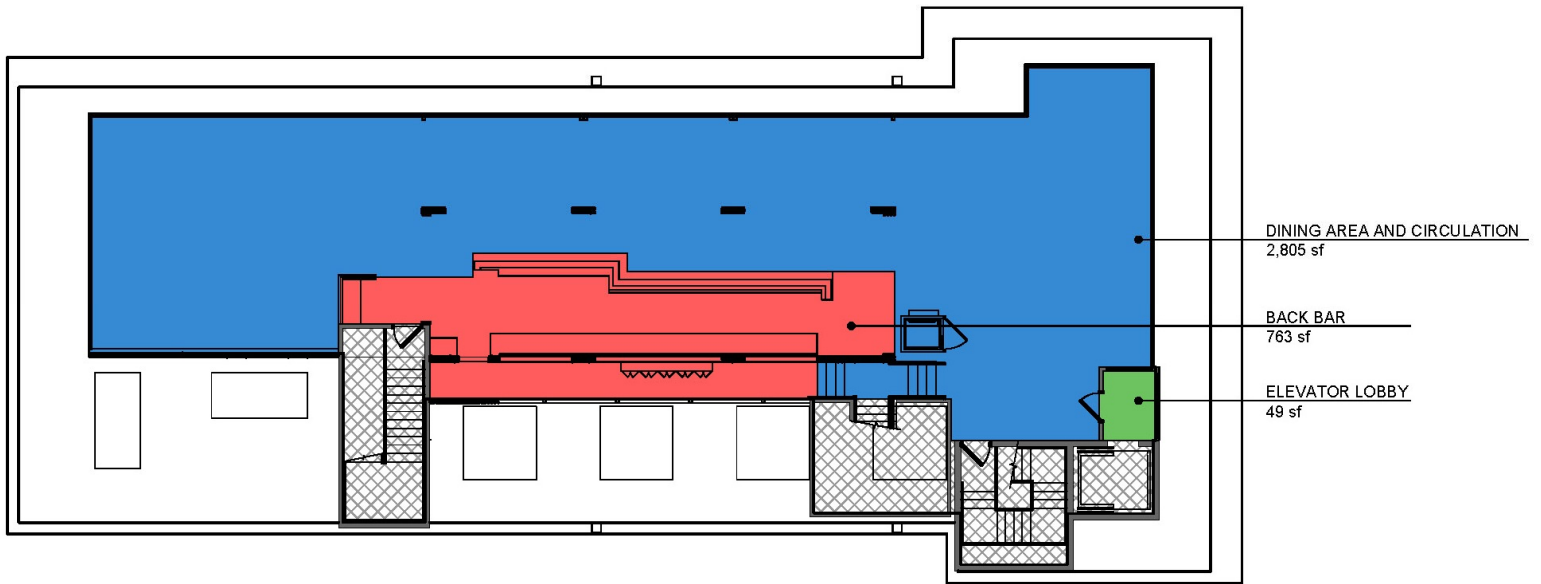
M: 612-889-2242

jhoug@shcre.com

www.shcre.com



## Rooftop 3,617 USF



# 1402 West Lake Street

Minneapolis, MN 55408

Jeff Houg

D: 952-300-9545

M: 612-889-2242

[jhoug@shcre.com](mailto:jhoug@shcre.com)

[www.shcre.com](http://www.shcre.com)



## Sky Deck 1,045 USF

